

ROLLING MEADOWS

TOWNHOME

53 Woodcock Drive | Tillsonburg ON

PREMIUM
SPECS



THE DETAILS

PRICE	\$594,000
CLOSING DATE	Available Now
LOT NUMBER	10A
BEDROOMS	4
BATHS	3.5
GARAGE	1
DRIVEWAY	12' 4"
SQ FT	2,451
MODEL	Tifton

Laura Babcock SALES PROFESSIONAL
519.520.0539 | laura.babcock@hayhoehomes.com



ROLLING MEADOWS

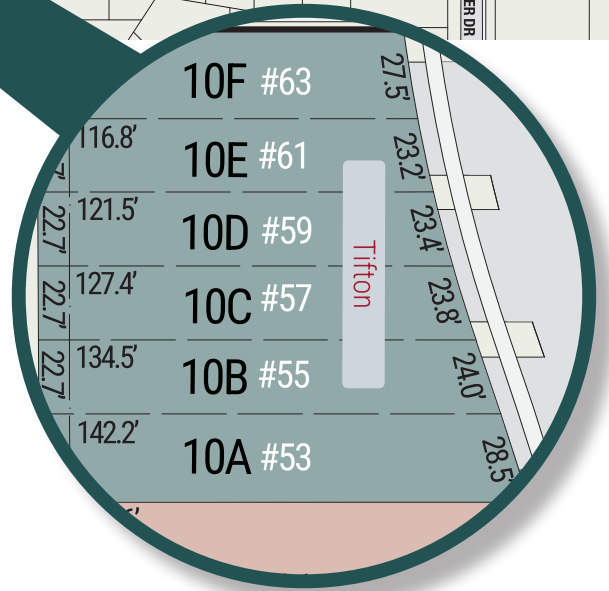
SITE PLAN

53 Woodcock Drive | Tillsonburg ON



exterior features

- KEYLESS ENTRY
- TREATED WOOD DECK
- BBQ GAS LINE
- ASPHALT DRIVEWAY
- WALKING TRAILS



ROLLING MEADOWS

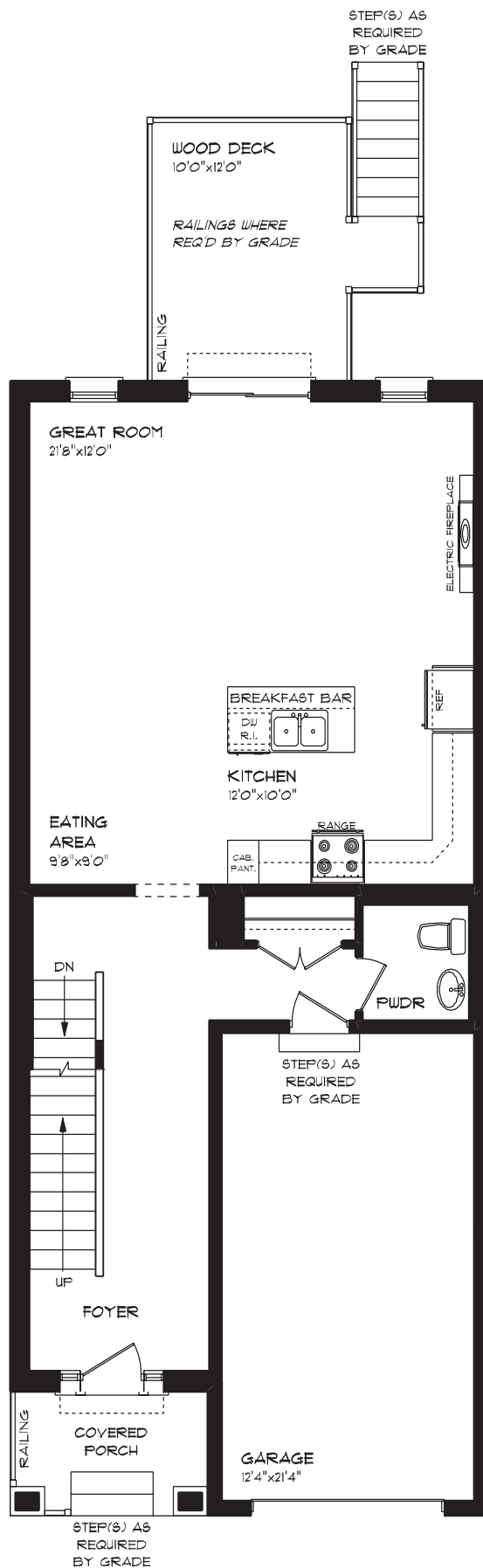
53 Woodcock Drive | Tillsonburg ON

MAIN FLOOR

852 sq ft

features

- QUARTZ COUNTERTOPS
- KITCHEN BACKSPLASH
- LUXURY VINYL PLANK FLOORING
- KITCHEN ISLAND
- 9' MAIN FLOOR CEILING
- SINGLE CAR GARAGE
- KITCHEN PANTRY



ROLLING MEADOWS

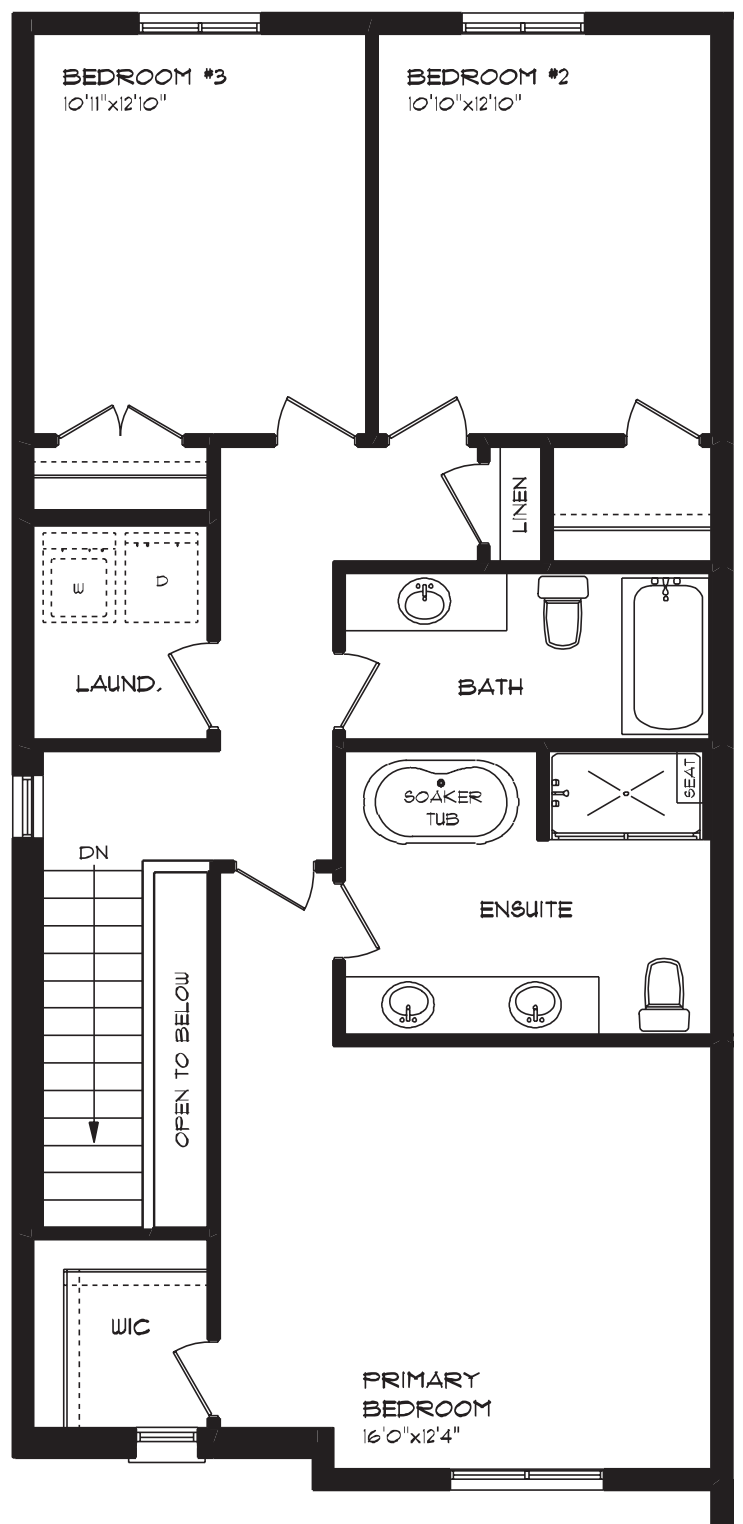
53 Woodcock Drive | Tillsonburg ON

SECOND FLOOR

1,006 sq ft

features

- PROFESSIONALLY DESIGNED
- LUXURY VINYL PLANK FLOORING
- CARPET FLOORING
- SECOND FLOOR LAUNDRY
- ENSUITE BATH
- WALK-IN CLOSET



ROLLING MEADOWS

53 Woodcock Drive | Tillsonburg ON

LOWER LEVEL

593 sq ft

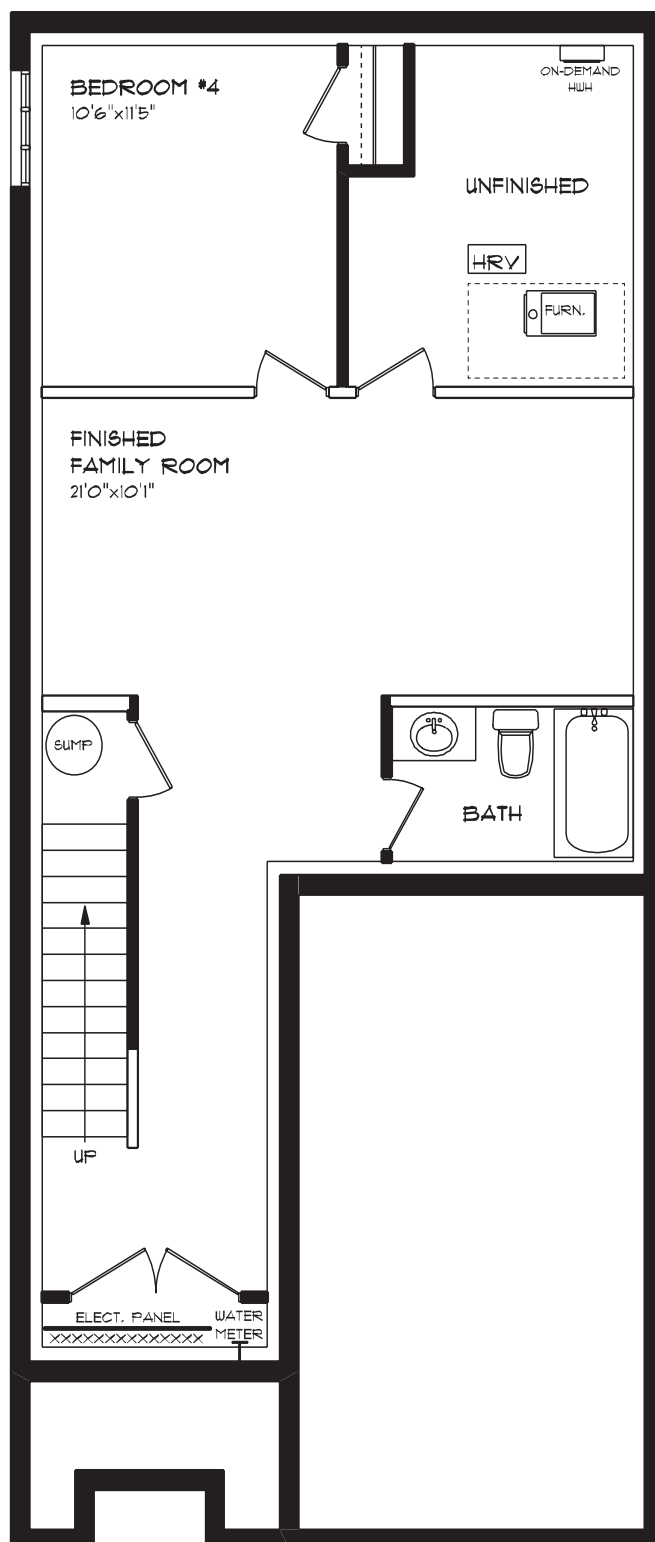
features

AIR CONDITIONING

GAS FURNACE WITH HRV

HUMIDIFIER

NEW HOME WARRANTY



ROLLING MEADOWS

53 Woodcock Drive | Tillsonburg ON

INTERIOR FINISHES



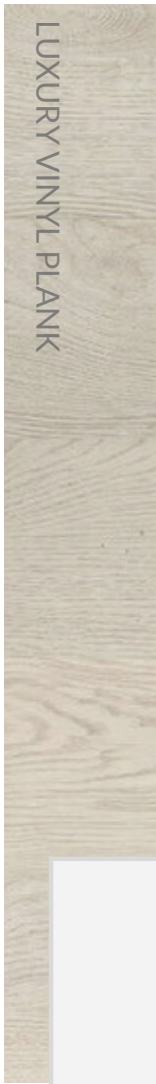
KITCHEN BACKSPLASH



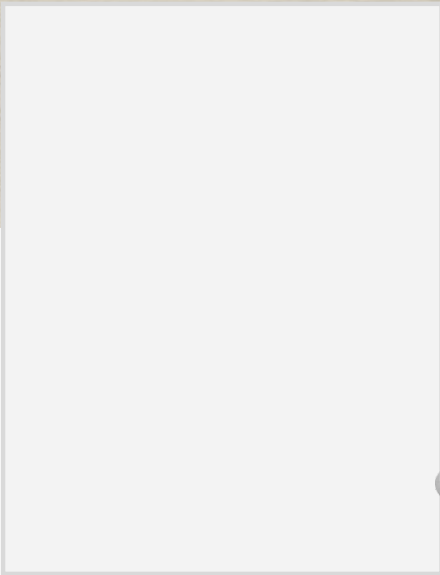
QUARTZ KITCHEN COUNTERTOPS



LUXURY VINYL PLANK



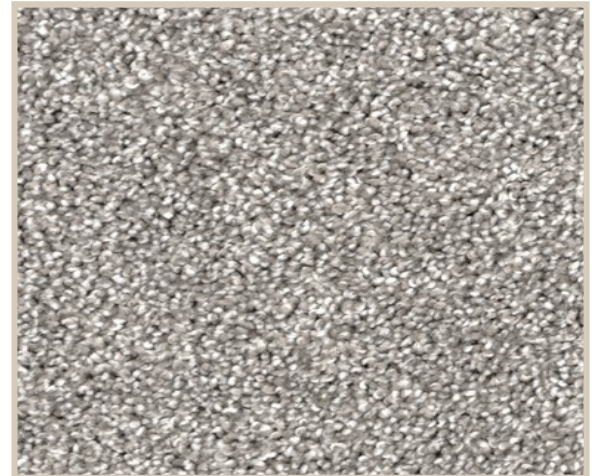
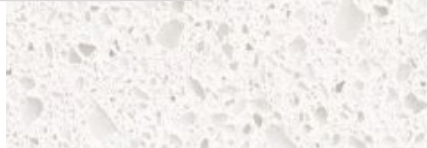
MELAMINE KITCHEN CABINERY



MELAMINE VANITY CABINERY



LAMINATE VANITY COUNTERTOPS



CARPET