

# ROLLING MEADOWS

TOWNHOME

48 Finch Street | Tillsonburg ON

PREMIUM  
SPECS



## THE DETAILS

PRICE	\$574,000
CLOSING DATE	August 19, 2026
LOT NUMBER	36C
BEDROOMS	4
BATHS	3.5
GARAGE	1
DRIVEWAY	12' 4"
SQ FT	2,443
MODEL	Tifton

Laura Babcock SALES PROFESSIONAL

519.520.0539 | [laura.babcock@hayhoehomes.com](mailto:laura.babcock@hayhoehomes.com)



[WWW.HAYHOEHOMES.COM](http://WWW.HAYHOEHOMES.COM)

Price, products, colours & features are subject to change without notice. E. & O. E. OCTOBER 7, 2025

**HAYHOE**<sup>TM</sup>  
HOMES

# ROLLING MEADOWS

## SITE PLAN

48 Finch Street | Tillsonburg ON



### exterior features

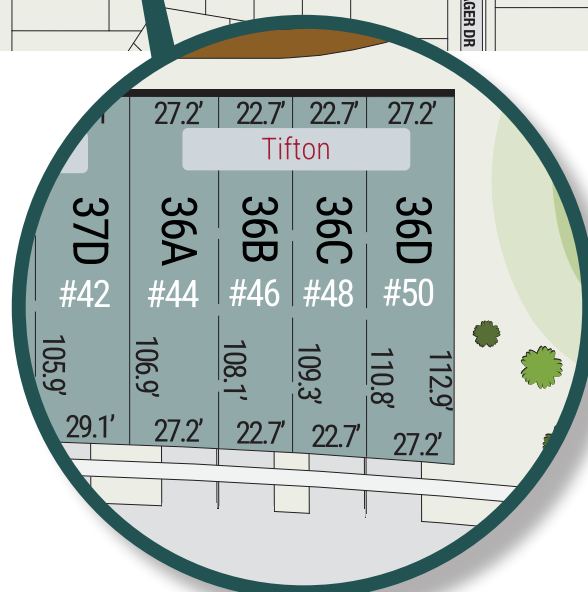
KEYLESS ENTRY

TREATED WOOD DECK

BBQ GAS LINE

ASPHALT DRIVEWAY

WALKING TRAILS



# ROLLING MEADOWS

48 Finch Street | Tillsonburg ON

## MAIN FLOOR

836 sq ft

### features

QUARTZ COUNTERTOPS

KITCHEN BACKSPLASH

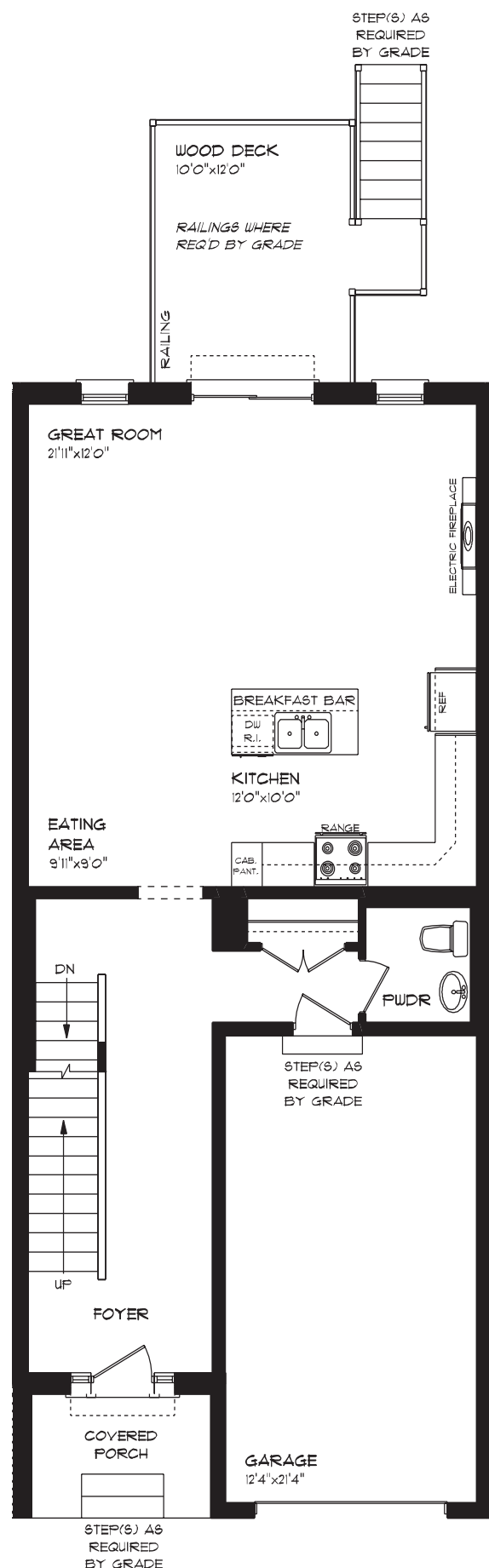
LUXURY VINYL PLANK FLOORING

KITCHEN ISLAND

9' MAIN FLOOR CEILING

SINGLE CAR GARAGE

KITCHEN PANTRY



# ROLLING MEADOWS

48 Finch Street | Tillsonburg ON

## SECOND FLOOR

1,006 sq ft

### features

PROFESSIONALLY DESIGNED

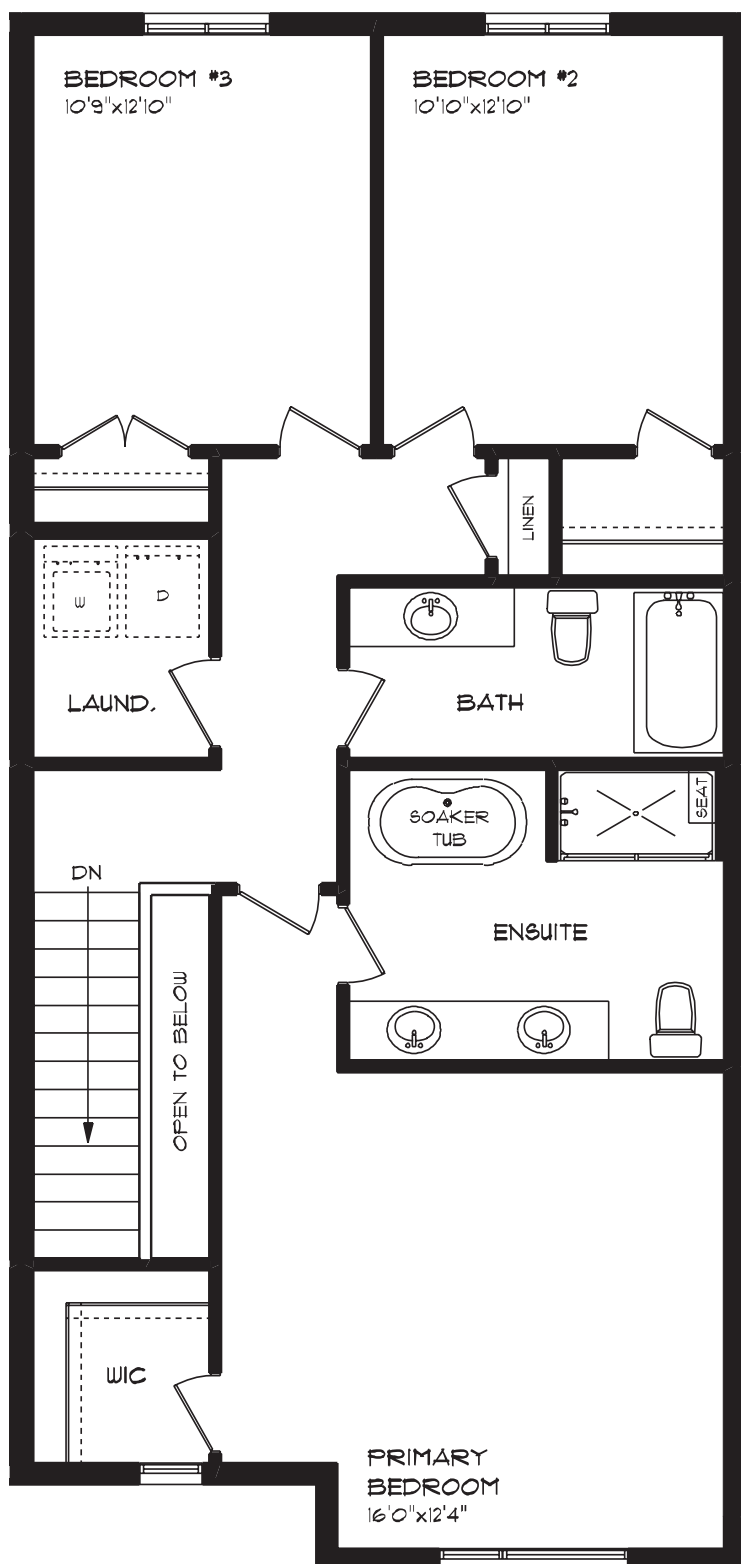
LUXURY VINYL PLANK FLOORING

CARPET FLOORING

SECOND FLOOR LAUNDRY

ENSUITE BATH

WALK-IN CLOSET





# ROLLING MEADOWS

48 Finch Street | Tillsonburg ON

## LOWER LEVEL

601 sq ft

### features

FINISHED FAMILY ROOM

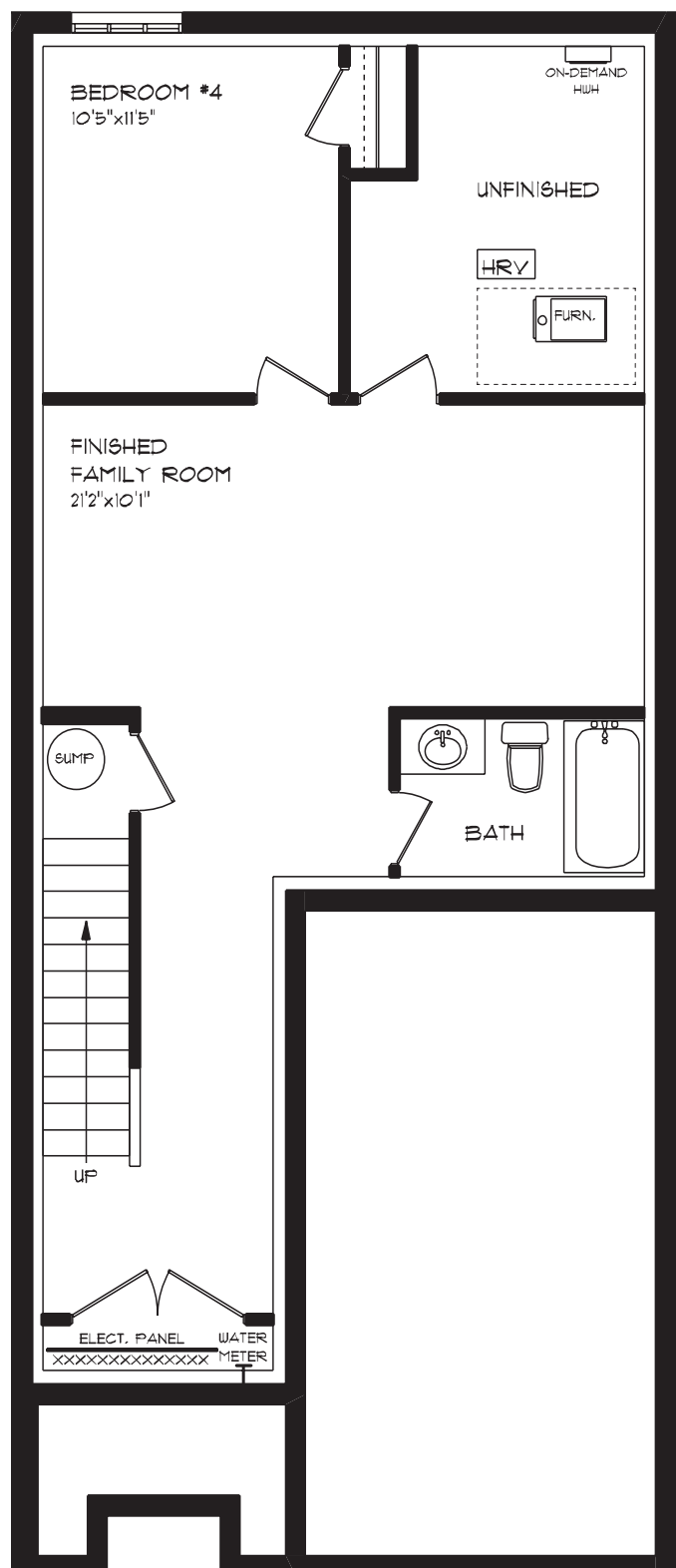
FINISHED BEDROOM #4

AIR CONDITIONING

GAS FURNACE WITH HRV

HUMIDIFIER

NEW HOME WARRANTY



# ROLLING MEADOWS

48 Finch Street | Tillsonburg ON

## INTERIOR FINISHES



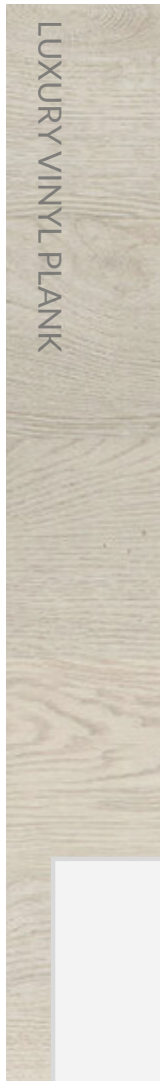
KITCHEN BACKSPLASH



QUARTZ KITCHEN COUNTERTOPS



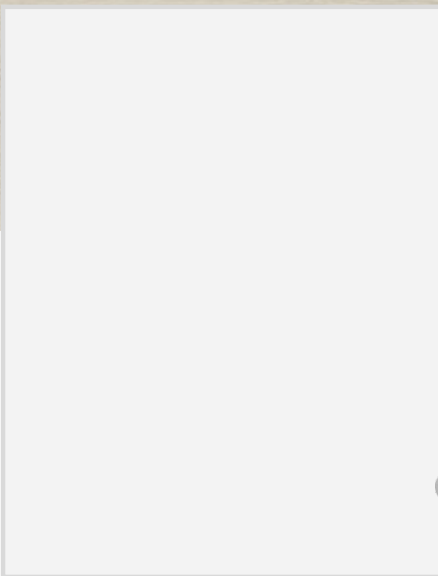
LUXURY VINYL PLANK



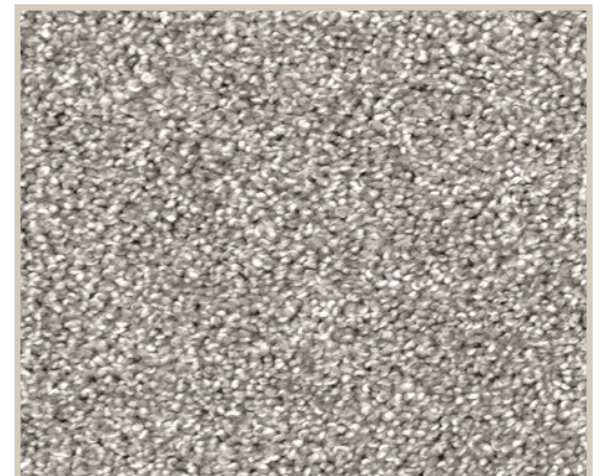
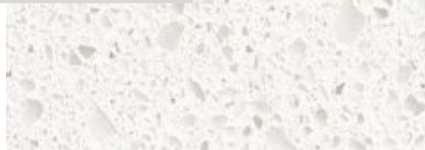
MELAMINE KITCHEN CABINETRY



MELAMINE VANITY CABINETRY



LAMINATE VANITY COUNTERTOPS



CARPET