

LYNHURST *Heights*



10 THOMAS CT ST. THOMAS | ON

THE DETAILS

PRICE	\$655,000
CLOSING DATE	December 8, 2026
LOT NUMBER	19A
BEDROOMS	4
BATHS	2.5
GARAGE	1
DRIVEWAY	17'
SQ FT	1,921
MODEL	Semi-Detached

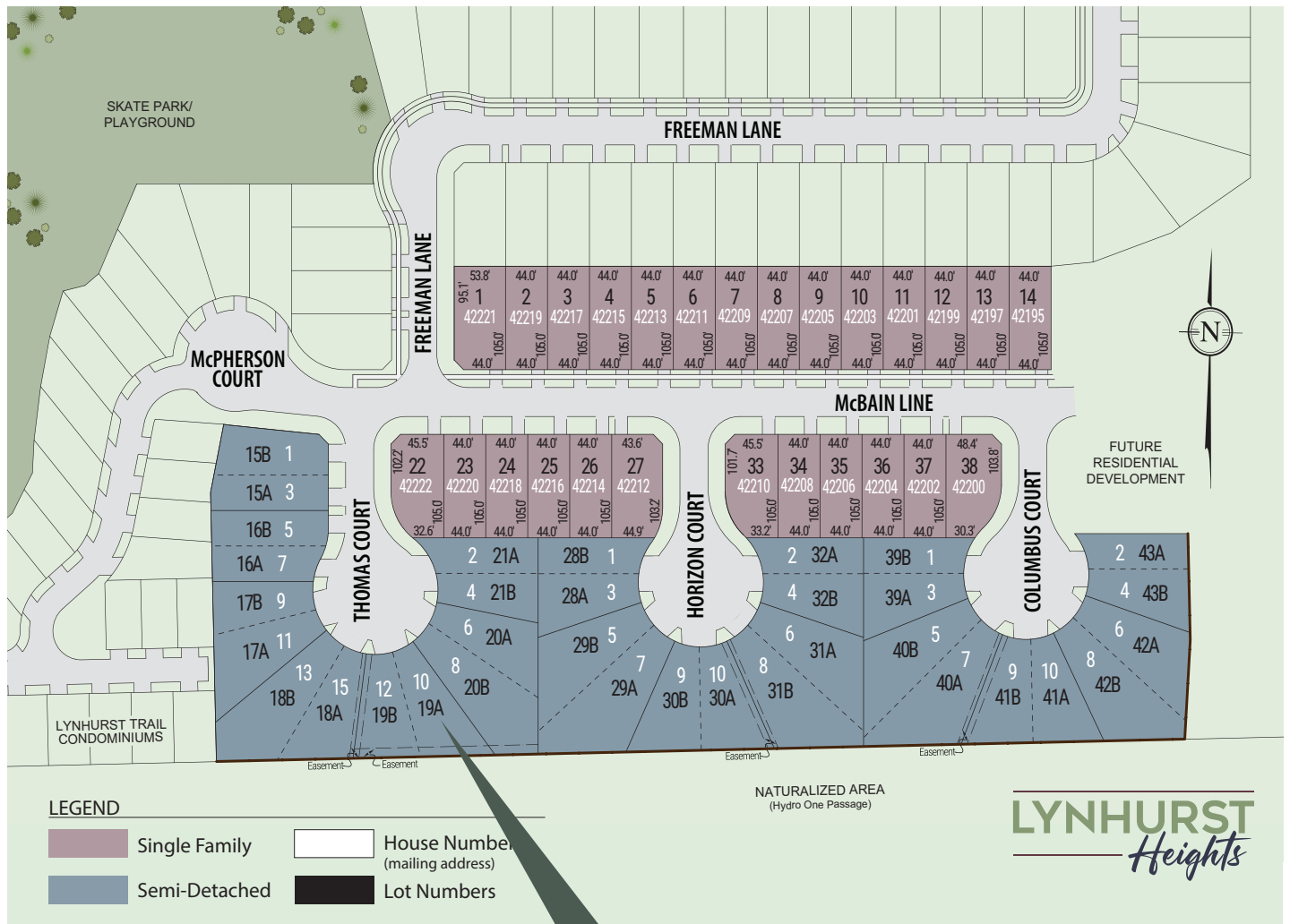
Dave Matthews SALES PROFESSIONAL
519.633.9215 | dave.matthews@hayhoehomes.com



LYNHURST *Heights*

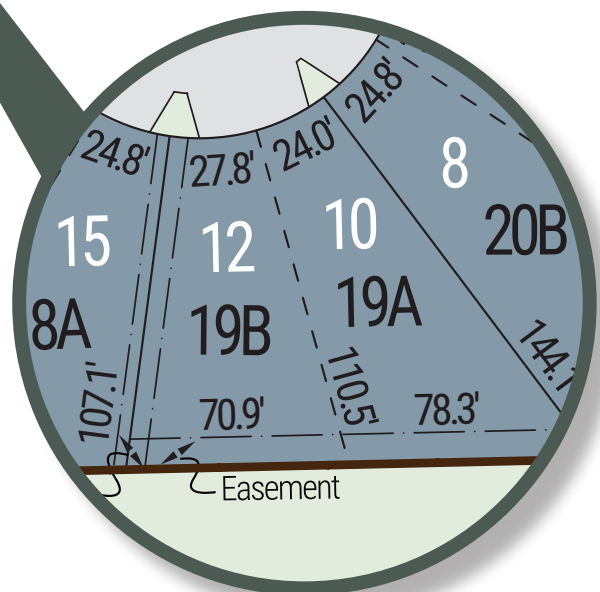
SITE PLAN

10 Thomas Court | ST. THOMAS | ONTARIO



exterior features

- KEYLESS ENTRY
- TREATED WOOD DECK
- ASPHALT DRIVEWAY
- WALKING TRAILS



LYNHURST Heights

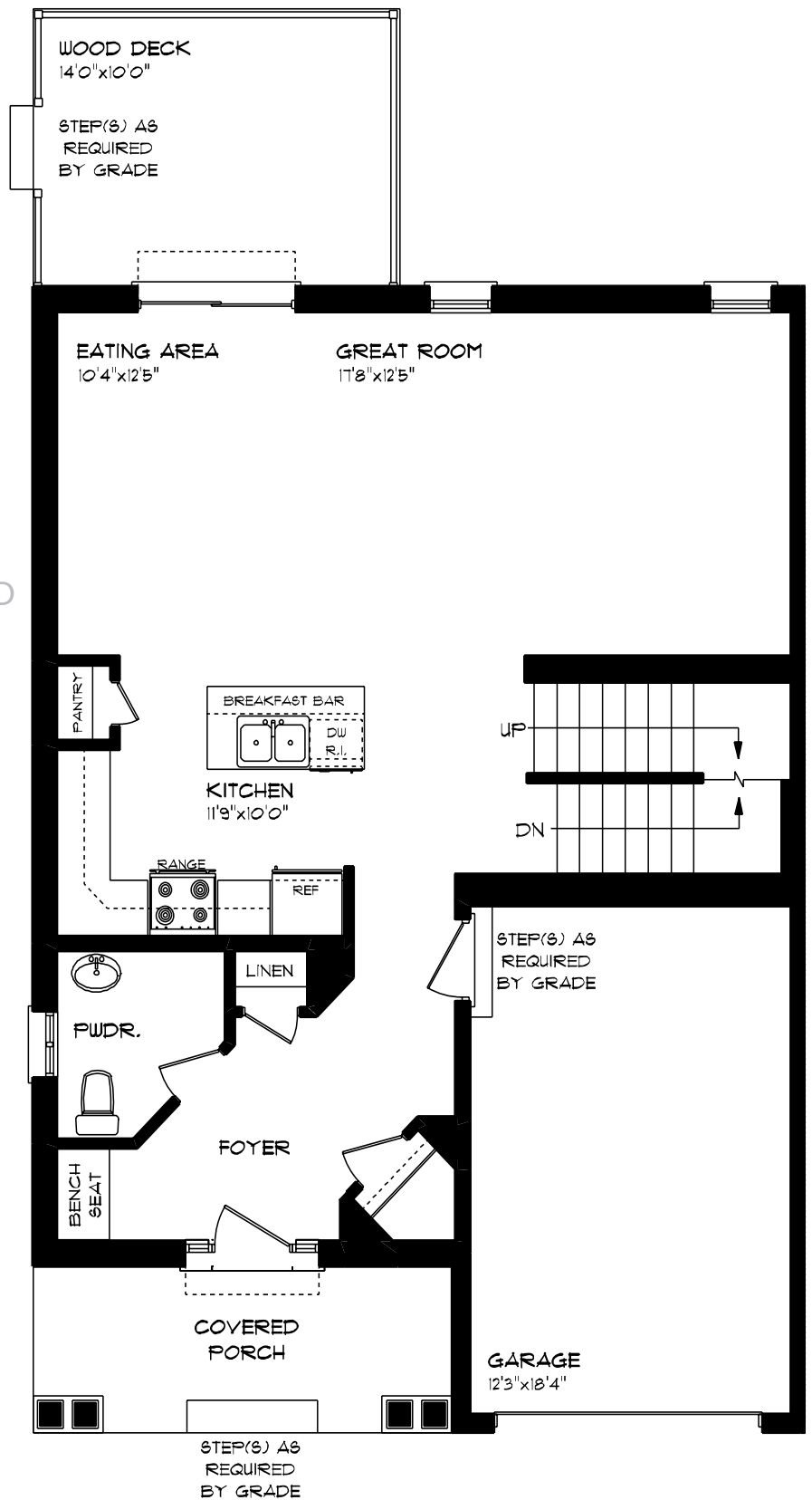
10 Thomas Court | ST. THOMAS | ONTARIO

MAIN FLOOR

873 sq ft

features

- QUARTZ COUNTERTOPS
- UNDERMOUNT SINK
- KITCHEN BACKSPLASH
- KITCHEN ISLAND
- LUXURY VINYL FLOORING
- SINGLE CAR GARAGE
- PROFESSIONALLY DESIGNED



LYNHURST *Heights*

10 Thomas Court | ST. THOMAS | ONTARIO

SECOND FLOOR

1,048 sq ft

features

PROFESSIONALLY DESIGNED

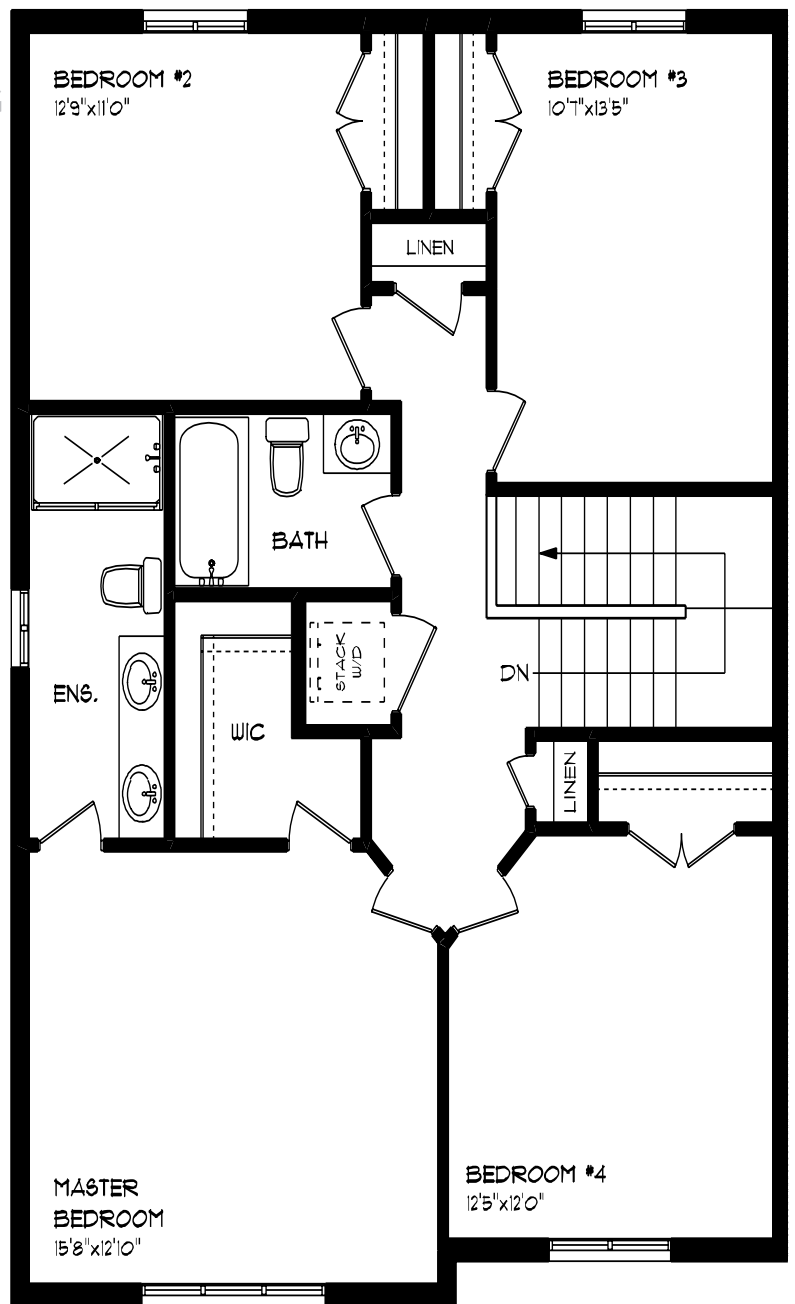
CARPET FLOORING

LUXURY VINYL PLANK FLOORING

WALK-IN CLOSET

SECOND FLOOR LAUNDRY

DOUBLE ENSUITE VANITY



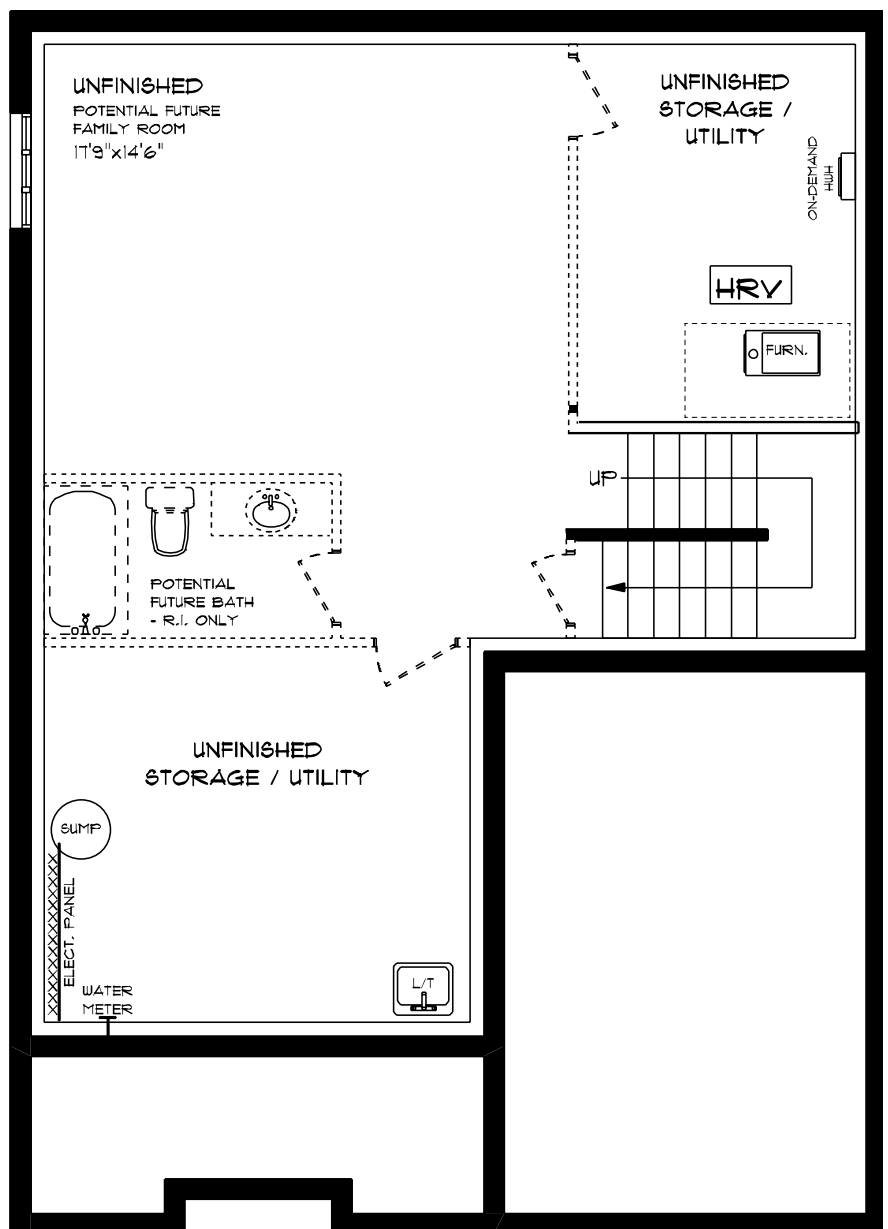
LYNHURST *Heights*

10 Thomas Court | ST. THOMAS | ONTARIO

LOWER LEVEL UNFINISHED

features

- AIR CONDITIONING
- GAS FURNACE WITH HRV
- HUMIDIFIER
- NEW HOME WARRANTY
- TANKLESS HWH



LYNHURST *Heights*

INTERIOR FINISHES

10 Thomas Court | ST. THOMAS | ONTARIO



PAINTED KITCHEN CABINETS



KITCHEN BACKSPLASH



LUXURY VINYL PLANK FLOORING

PERIMETER LOWERS



UPPERS, TALLS, ISLAND

QUARTZ KITCHEN COUNTERTOPS



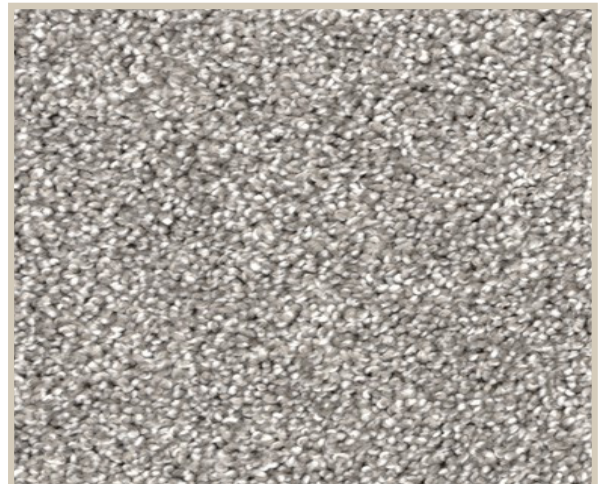
WALL COLOUR



PAINTED VANITY CABINETS



LAMINATE VANITY COUNTERTOPS



CARPET