

ROLLING MEADOWS

TOWNHOME

12 Finch Street | Tillsonburg ON

ESSENTIAL
&
SPECS



THE DETAILS

PRICE	\$514,000
CLOSING DATE	Available Now
LOT NUMBER	42D
BEDROOMS	2
BATHS	2
GARAGE	1
DRIVEWAY	11'3"
SQ FT	1,132
MODEL	Arbor

Laura Babcock SALES PROFESSIONAL
519.520.0539 | laura.babcock@hayhoehomes.com



ROLLING MEADOWS

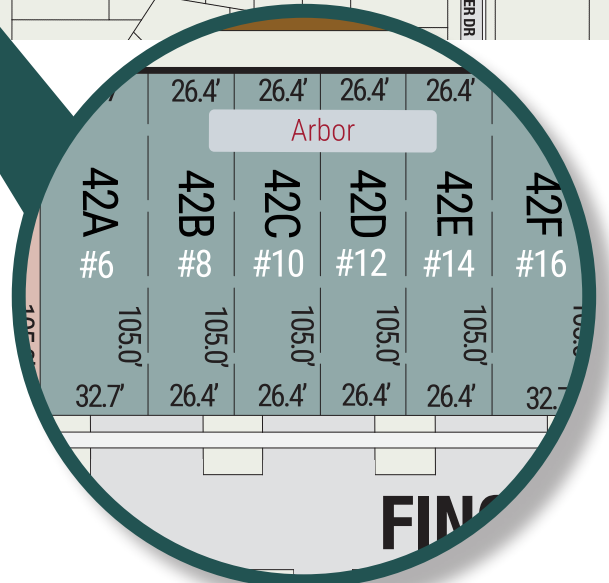
SITE PLAN

12 Finch Street | Tillsonburg ON



exterior features

- KEYLESS ENTRY
- TREATED WOOD DECK
- BBQ GAS LINE
- ASPHALT DRIVEWAY
- WALKING TRAILS



ROLLING MEADOWS

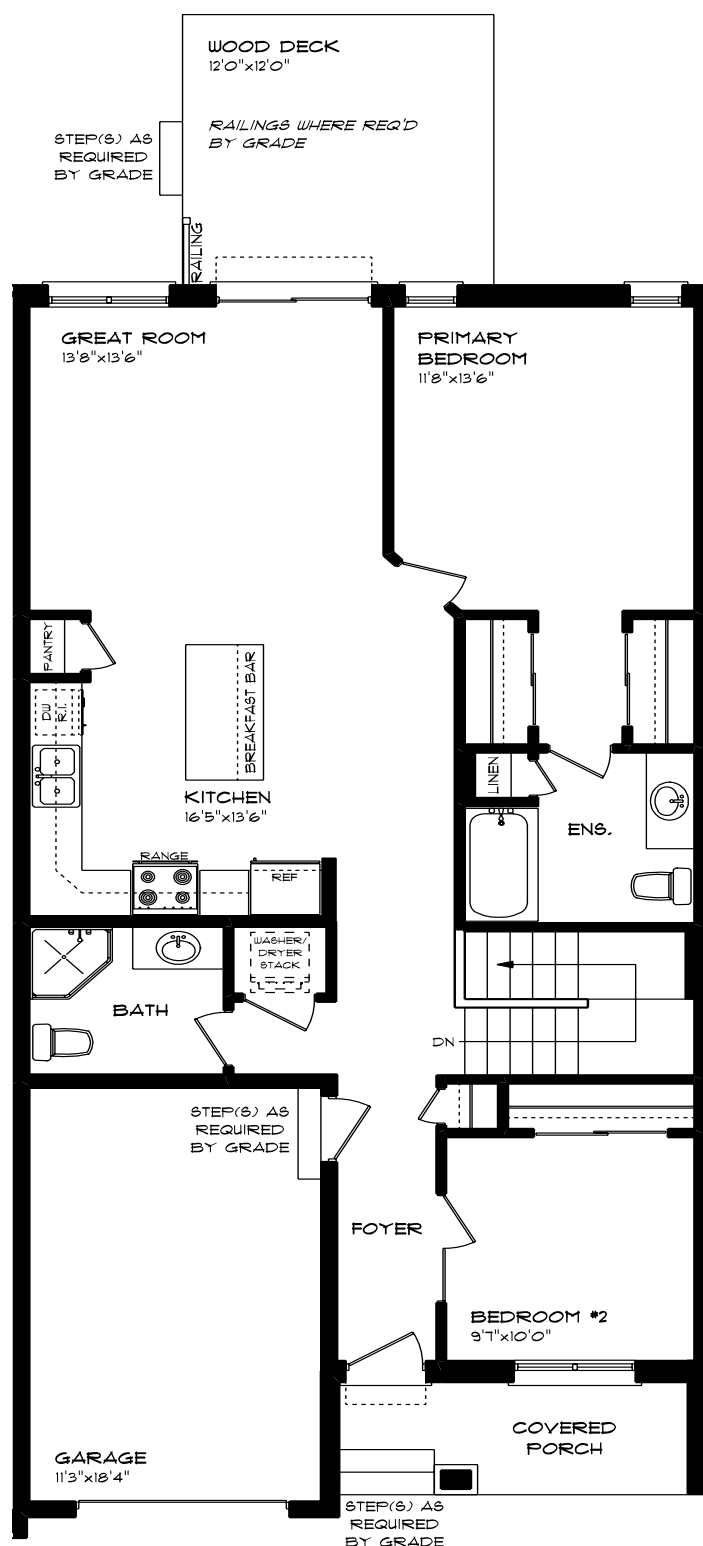
12 Finch Street | Tillsonburg ON

MAIN FLOOR

1,132 sq ft

features

- QUARTZ COUNTERTOPS
- PAINTED KITCHEN BACKSPLASH
- LUXURY VINYL PLANK FLOORING
- KITCHEN ISLAND
- 9' MAIN FLOOR CEILING
- SINGLE CAR GARAGE
- KITCHEN PANTRY



ROLLING MEADOWS

12 Finch Street | Tillsonburg ON

LOWER LEVEL

Unfinished

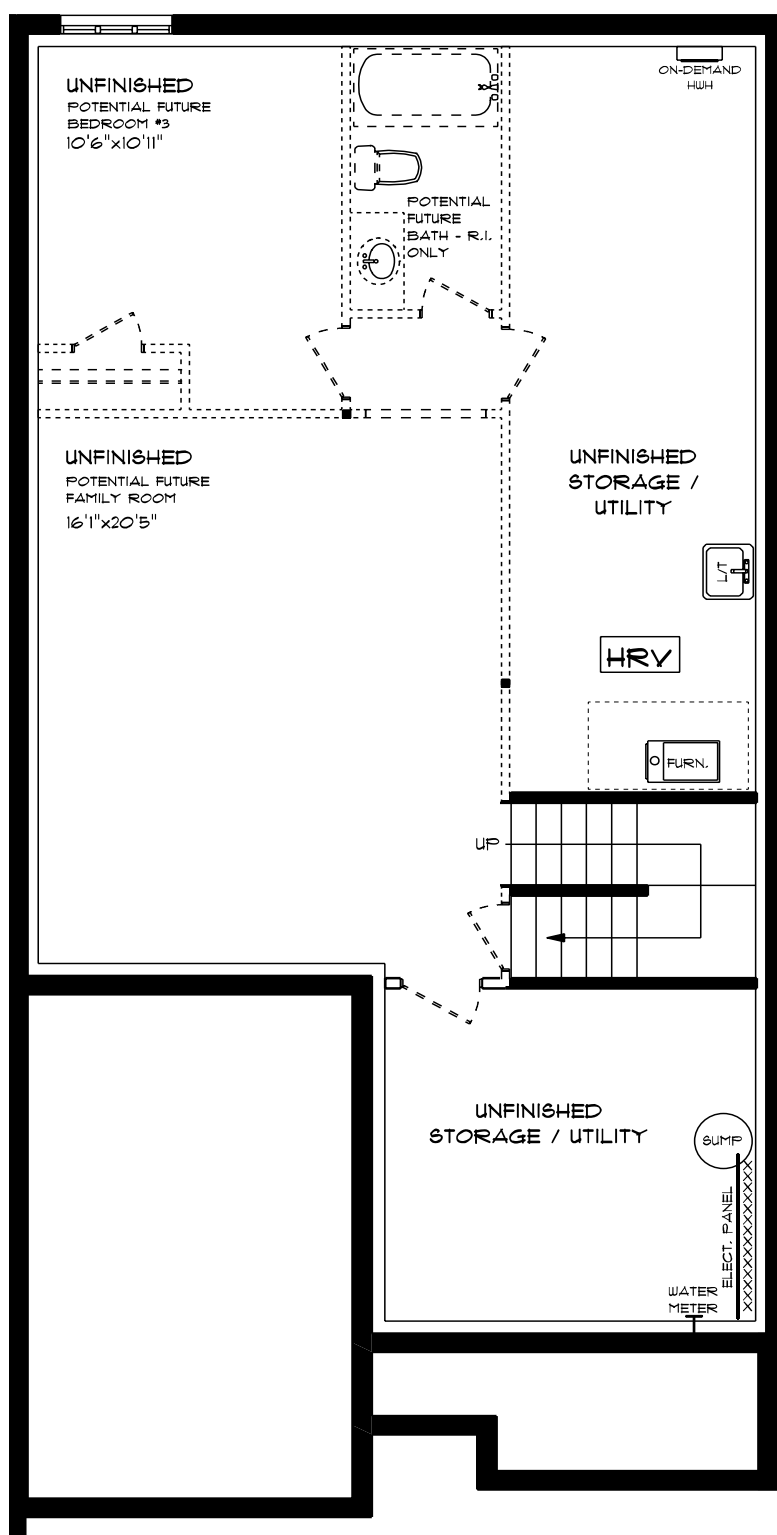
features

AIR CONDITIONING

GAS FURNACE WITH HRV

HUMIDIFIER

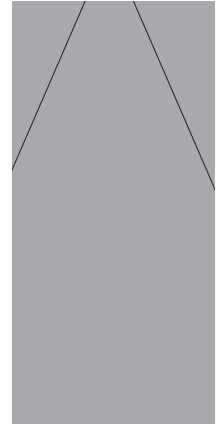
NEW HOME WARRANTY



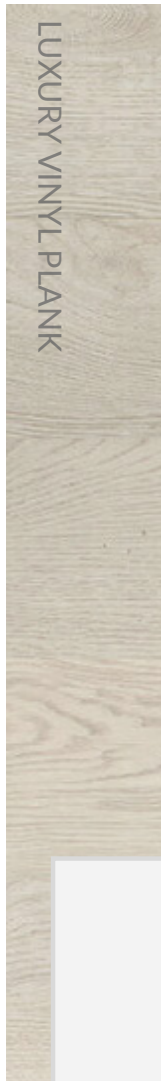
ROLLING MEADOWS

12 Finch Street | Tillsonburg ON

INTERIOR FINISHES



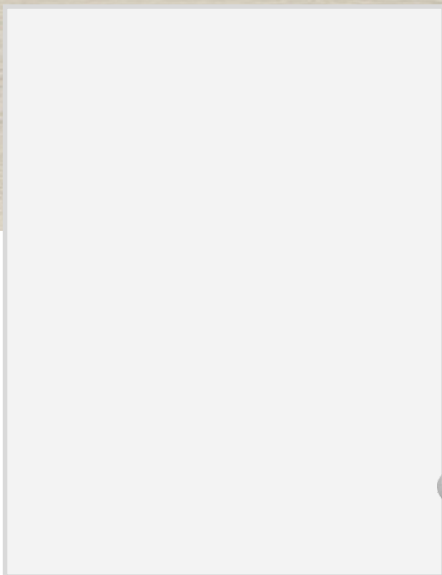
QUARTZ KITCHEN COUNTERTOPS



LUXURY VINYL PLANK



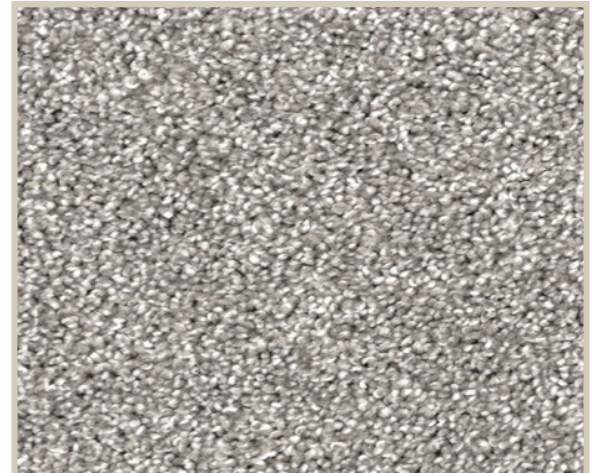
MELAMINE KITCHEN CABINETS



MELAMINE VANITY CABINETS



LAMINATE VANITY COUNTERTOPS



CARPET