

ROLLING MEADOWS

TOWNHOME

36 Finch Street | Tillsonburg ON

ESSENTIAL
SPECS



THE DETAILS

PRICE	\$589,000
CLOSING DATE	June 22, 2026
LOT NUMBER	37A
BEDROOMS	4
BATHS	2.5
GARAGE	2
DRIVEWAY	17'
SQ FT	1,976
MODEL	Clifton

Laura Babcock SALES PROFESSIONAL
519.520.0539 | laura.babcock@hayhoehomes.com



WWW.HAYHOEHOMES.COM

Price, products, colours & features are subject to change without notice. E. & O. E. SEPTEMBER 17, 2025

HAYHOE™
HOMES

ROLLING MEADOWS

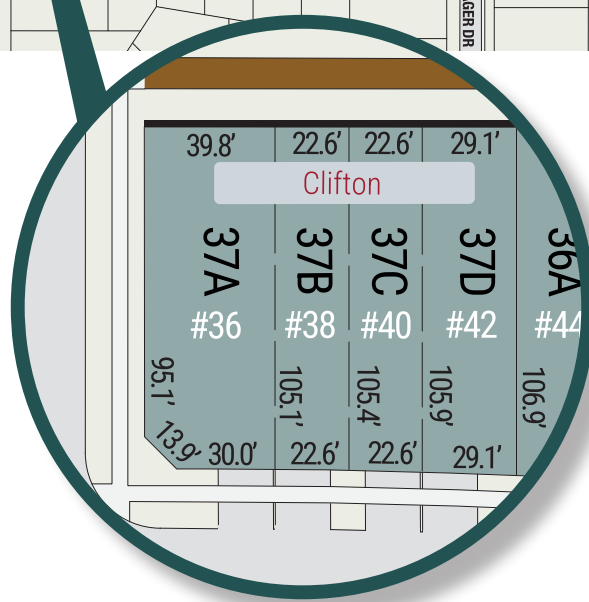
SITE PLAN

36 Finch Street | Tillsonburg ON



exterior features

- KEYLESS ENTRY
- TREATED WOOD DECK
- WALKING TRAILS
- ASPHALT DRIVEWAY



ROLLING MEADOWS

36 Finch Street | Tillsonburg ON

MAIN FLOOR

831 sq ft

features

QUARTZ COUNTERTOPS

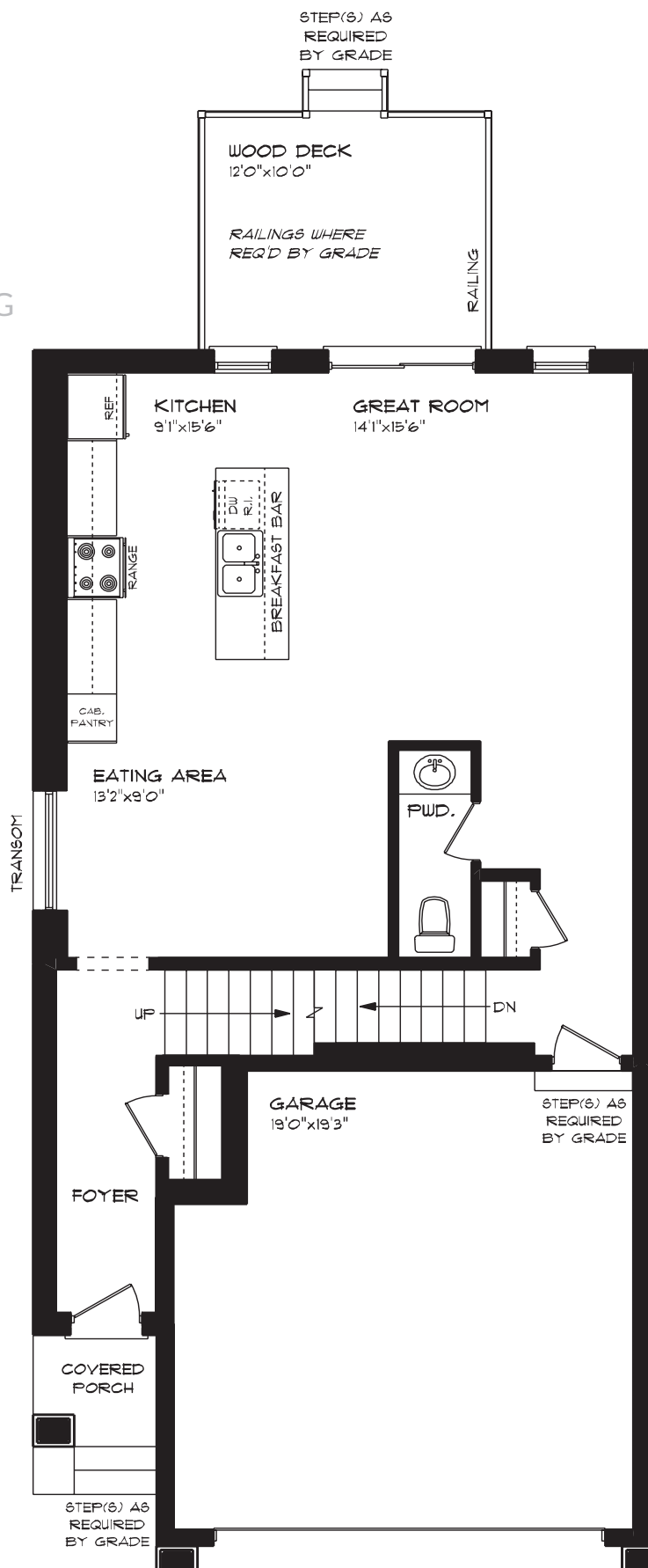
LUXURY VINYL PLANK FLOORING

KITCHEN ISLAND

8' MAIN FLOOR CEILING

DOUBLE CAR GARAGE

KITCHEN PANTRY



ROLLING MEADOWS

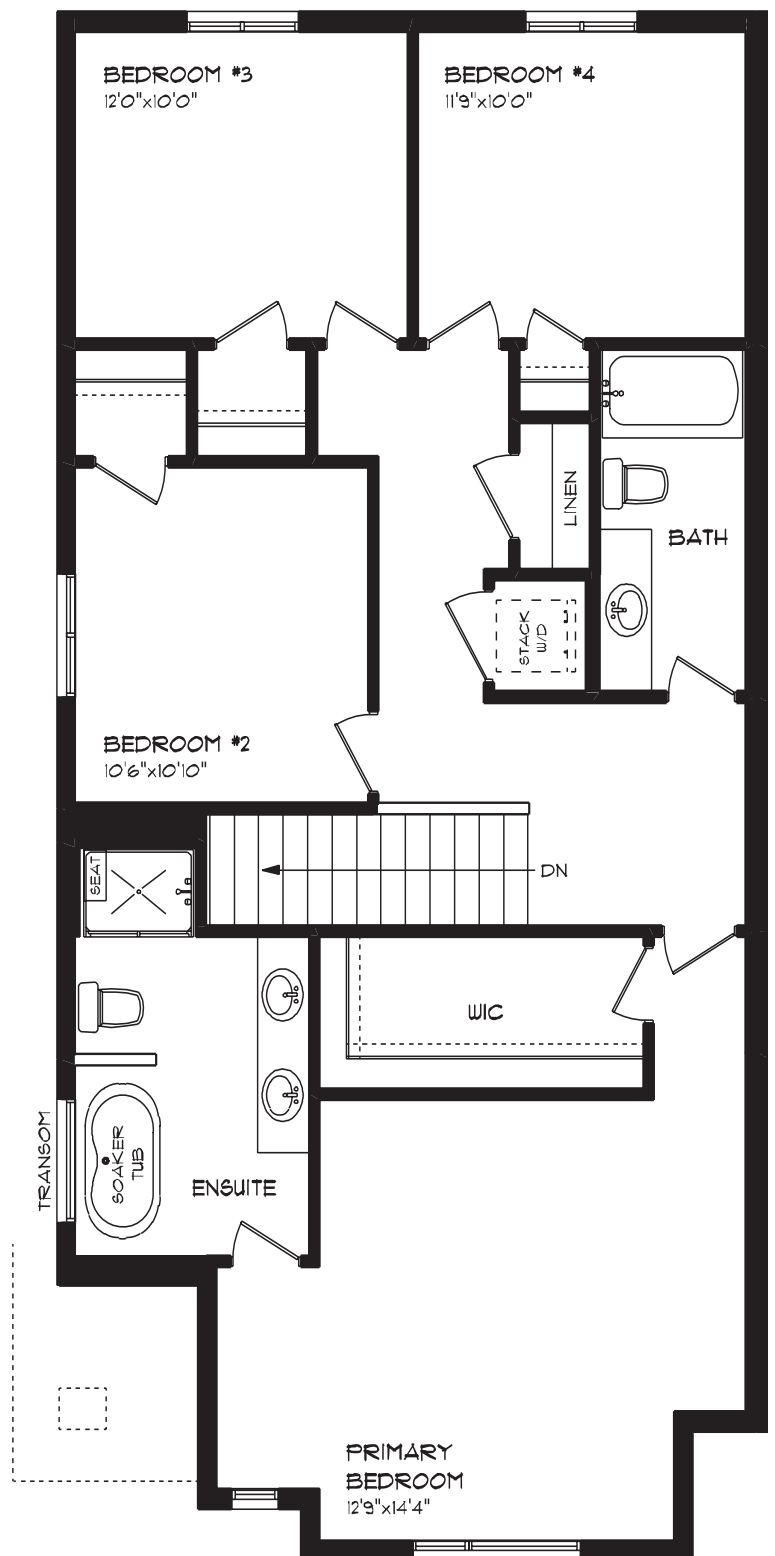
36 Finch Street | Tillsonburg ON

SECOND FLOOR

1,145 sq ft

features

- PROFESSIONALLY DESIGNED
- LUXURY VINYL PLANK FLOORING
- CARPET FLOORING
- ENSUITE BATH
- SECOND FLOOR LAUNDRY
- WALK-IN CLOSET



ROLLING MEADOWS

36 Finch Street | Tillsonburg ON

LOWER LEVEL

Unfinished

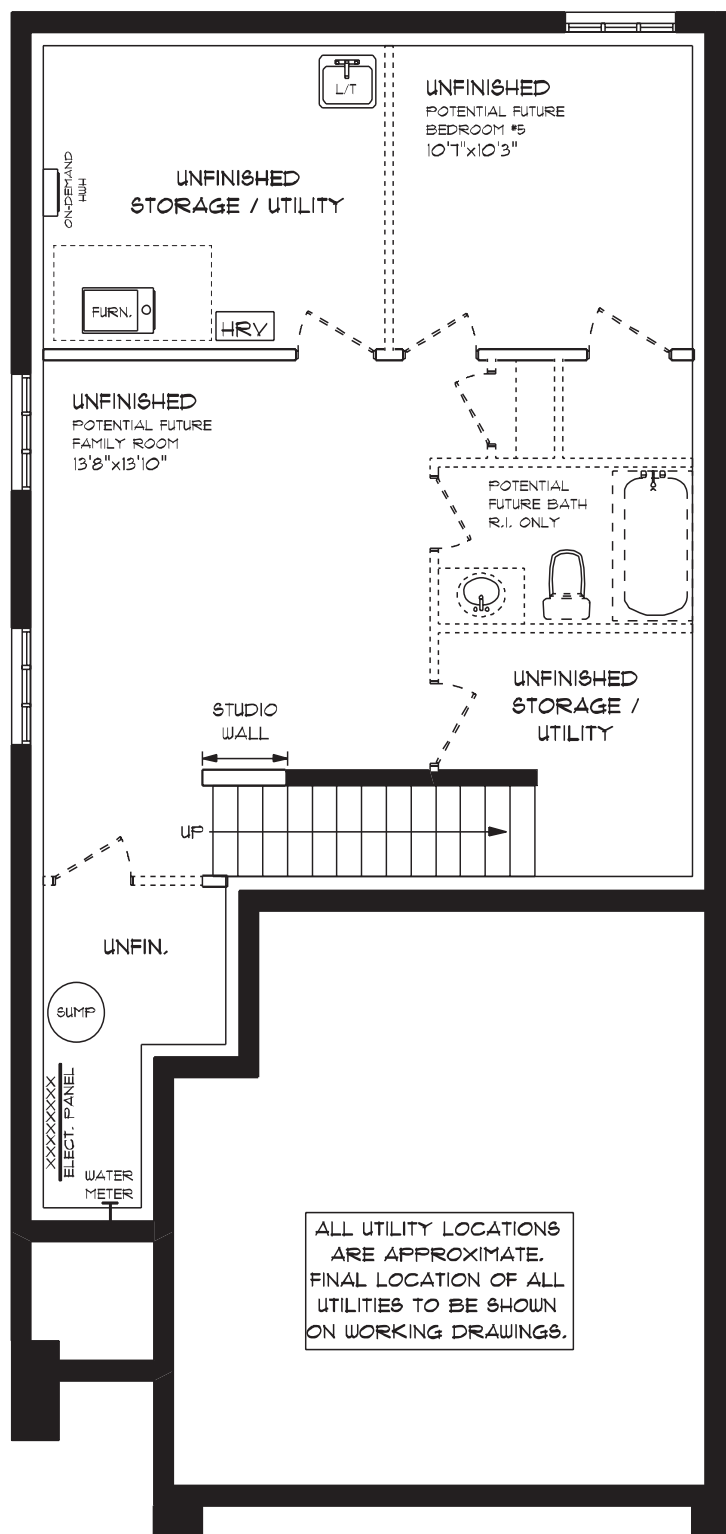
features

AIR CONDITIONING

GAS FURNACE WITH HRV

HUMIDIFIER

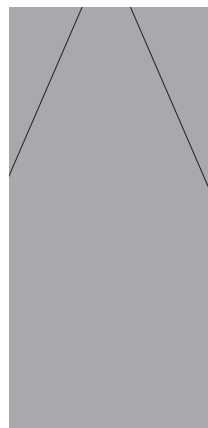
NEW HOME WARRANTY



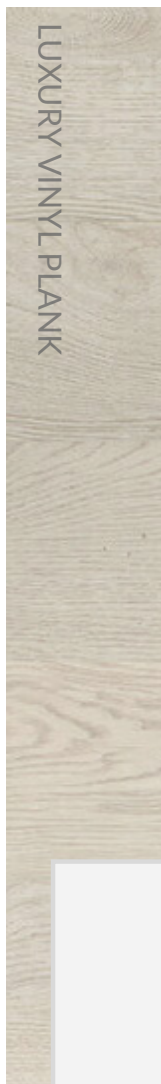
ROLLING MEADOWS

36 Finch Street | Tillsonburg ON

INTERIOR FINISHES



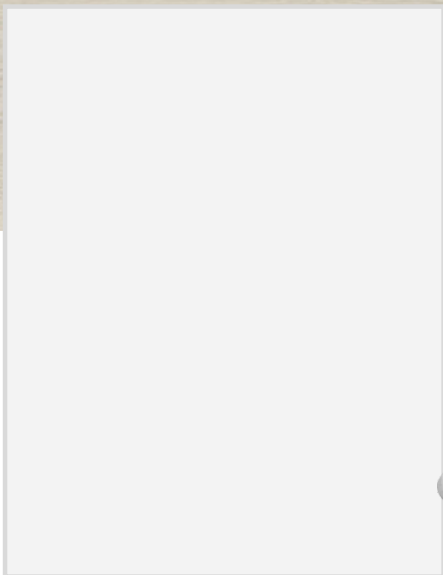
QUARTZ KITCHEN COUNTERTOPS



LUXURY VINYL PLANK



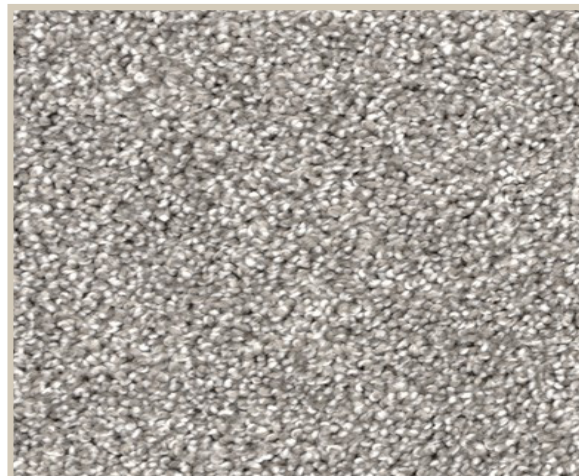
MELAMINE KITCHEN CABINETS



MELAMINE VANITY CABINETS



LAMINATE VANITY COUNTERTOPS



CARPET