

WILLOW RUN

71 WILLOW DRIVE

AYLMER | ONTARIO

TOWNHOME



THE DETAILS

PRICE	\$499,000
CLOSING DATE	May 1, 2025
LOT NUMBER	3E
BEDROOMS	3
BATHS	2.5
GARAGE	1
DRIVEWAY	17'
SQ FT	1,564
MODEL	Townhome

Emma Smith SALES PROFESSIONAL

519.409.1474 | emma.smith@hayhoehomes.com



[WWW.HAYHOEHOMES.COM](http://www.hayhoehomes.com)

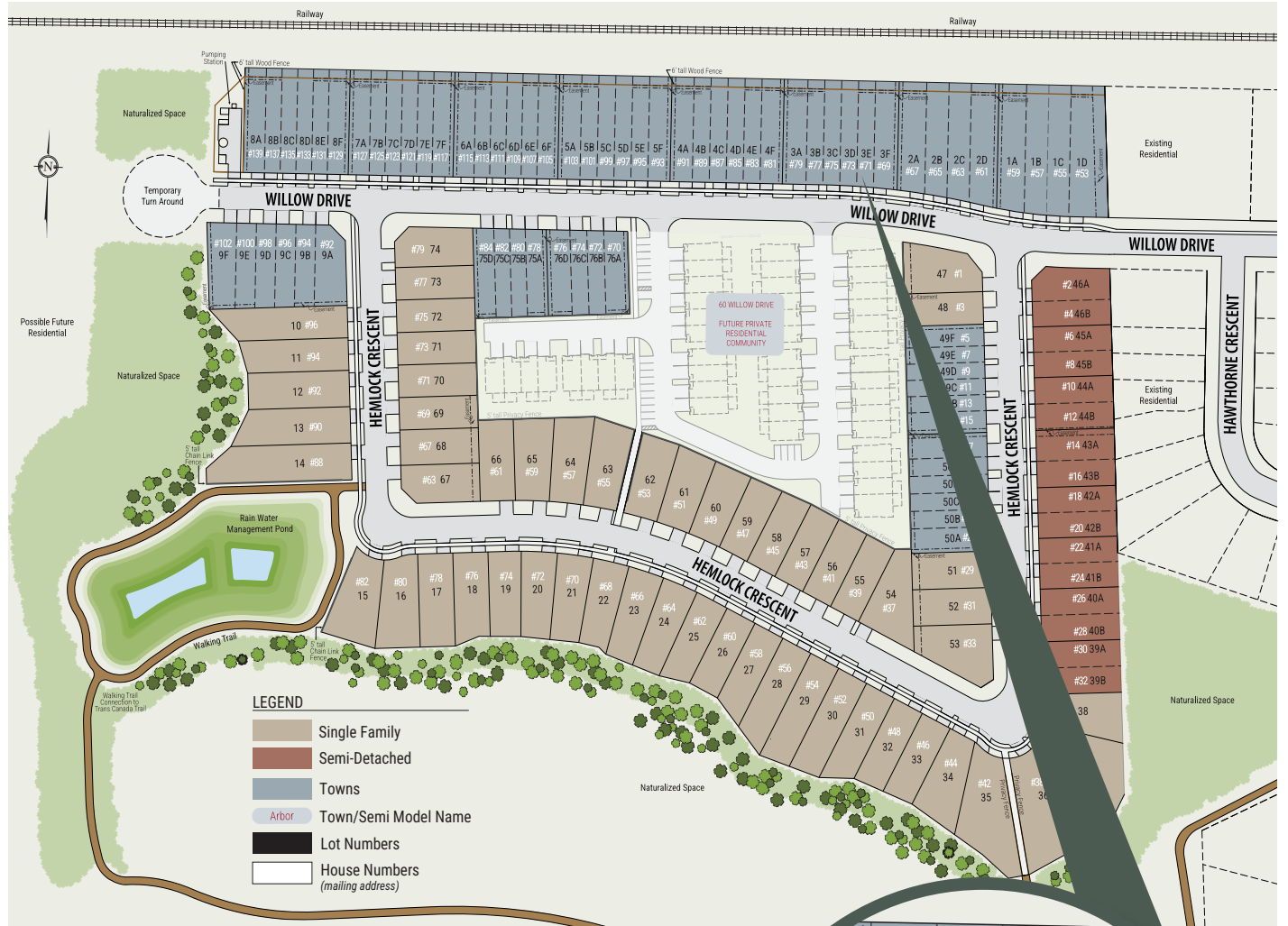
Price, products, colours & features are subject to change without notice. E. & O. E. NOVEMBER 2024

HAYHOETM
-HOMES-

WILLOW RUN

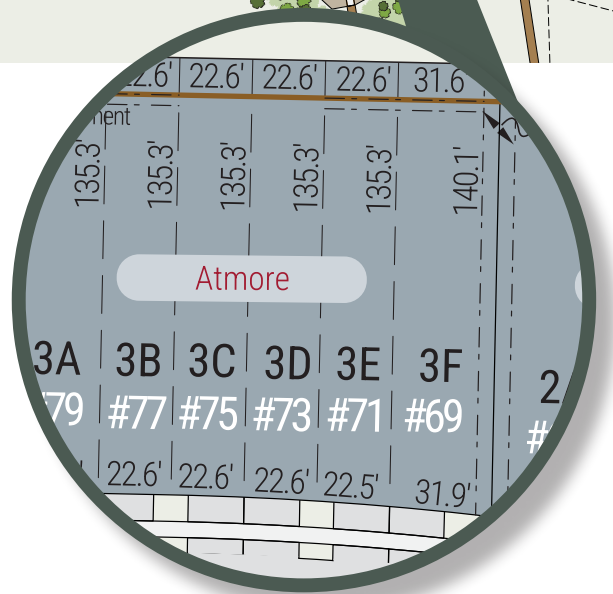
SITE PLAN

71 WILLOW DRIVE | AYLMER ON



exterior features

- KEYLESS ENTRY
- TREATED WOOD DECK
- ASPHALT DRIVEWAY
- WALKING TRAILS



WILLOW RUN

71 WILLOW DRIVE

MAIN FLOOR

725 sq ft

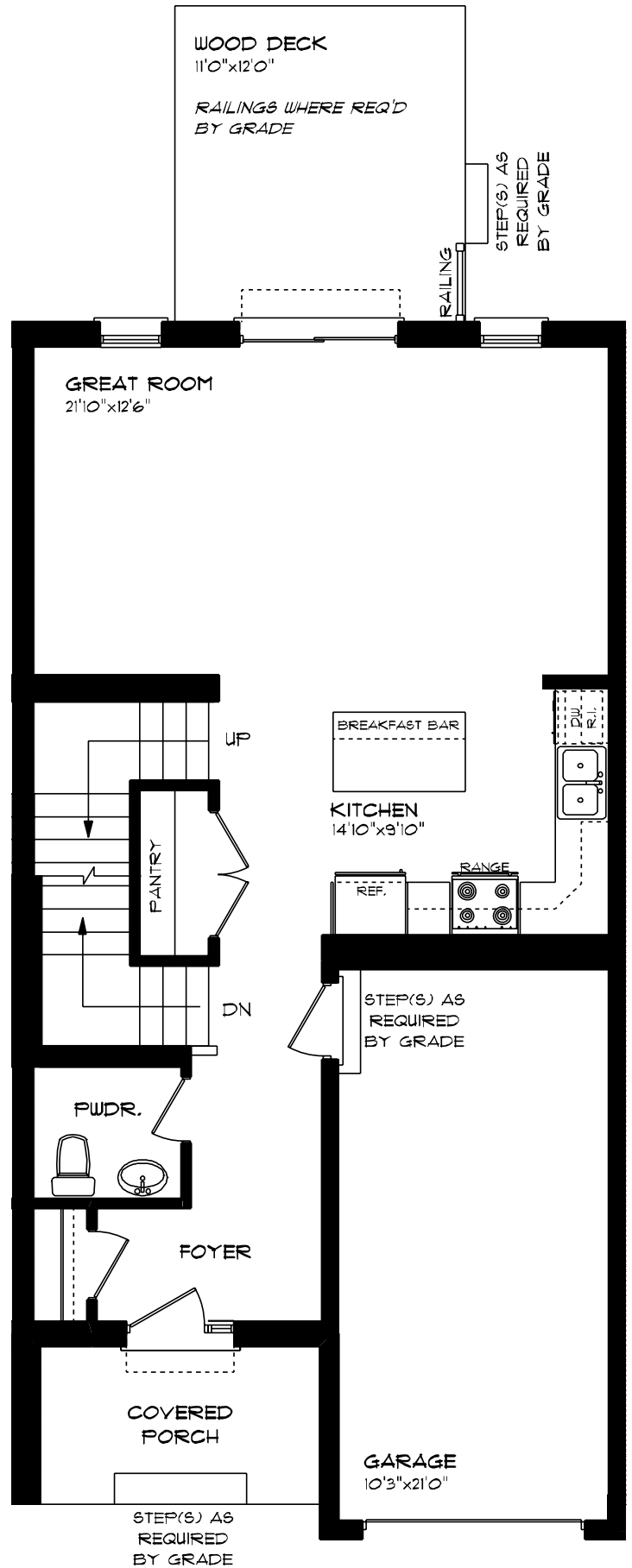
features

QUARTZ COUNTERTOPS

VINYL PLANK FLOORING

KITCHEN ISLAND

9' CEILINGS



WILLOW RUN

71 WILLOW DRIVE

SECOND FLOOR

839 sq ft

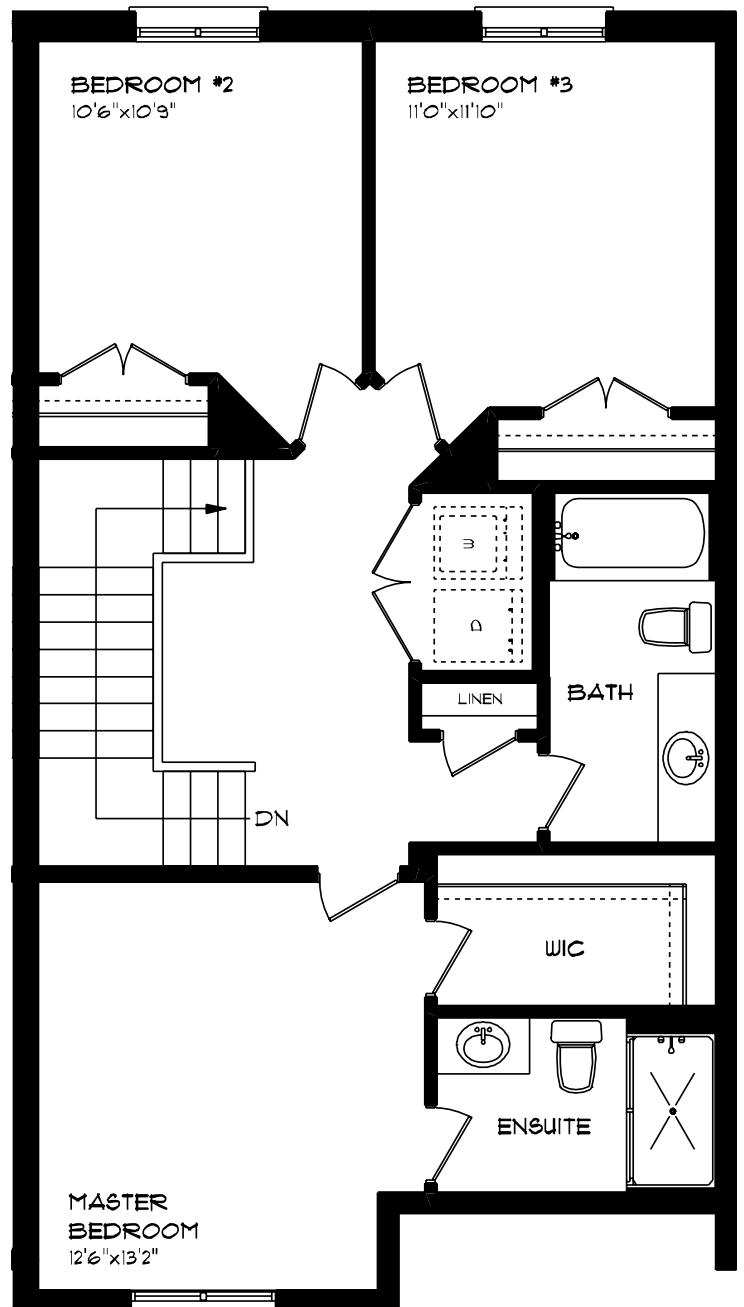
features

PROFESSIONALLY DESIGNED

CARPET FLOORING

VINYL PLANK FLOORING

WALK-IN CLOSET



WILLOW RUN

71 WILLOW DRIVE

LOWER LEVEL UNFINISHED

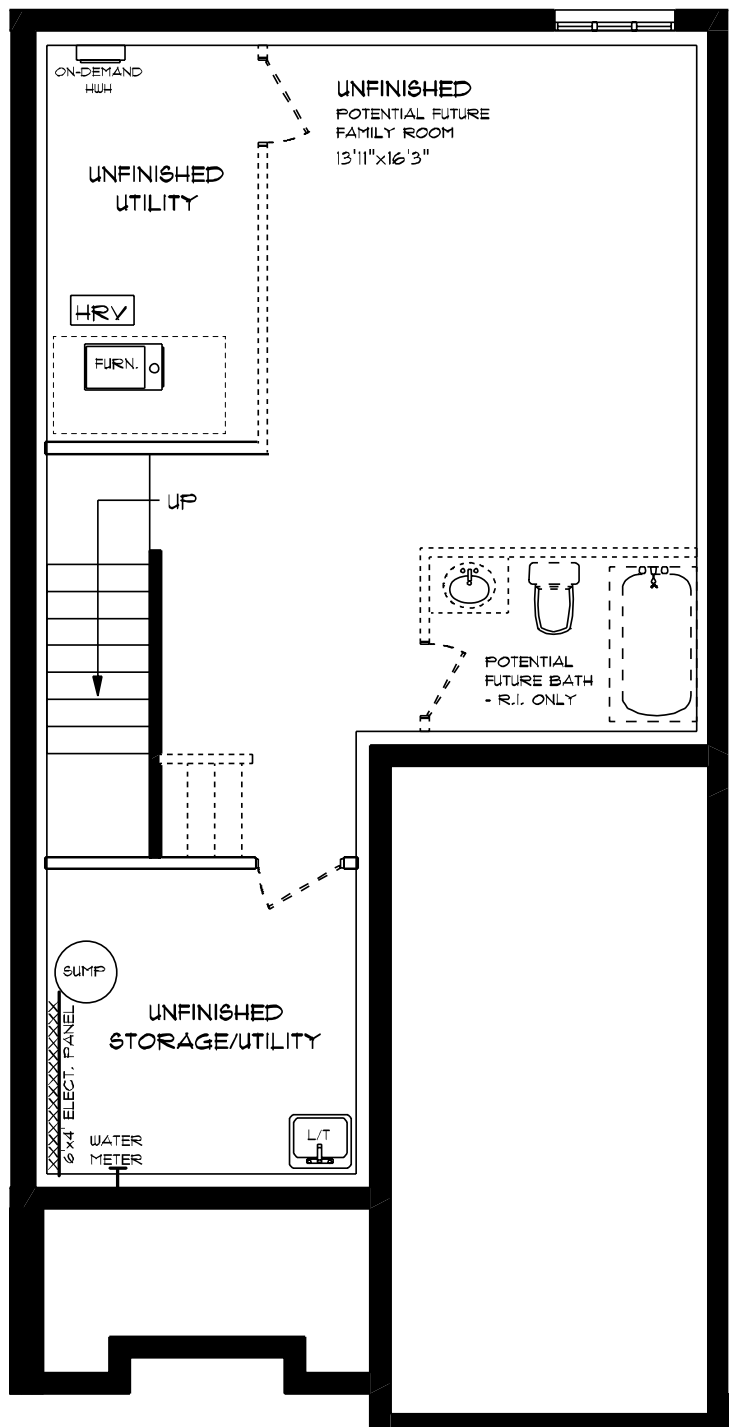
features

AIR CONDITIONING

GAS FURNACE WITH HRV

HUMIDIFIER

NEW HOME WARRANTY



WILLOW RUN

71 WILLOW DRIVE

INTERIOR FINISHES

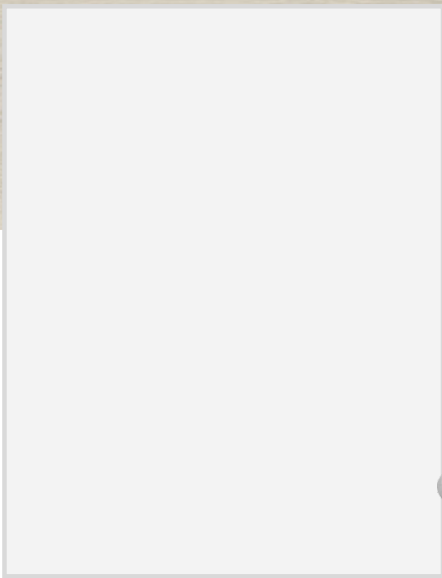


QUARTZ KITCHEN COUNTERTOPS

LUXURY VINYL PLANK



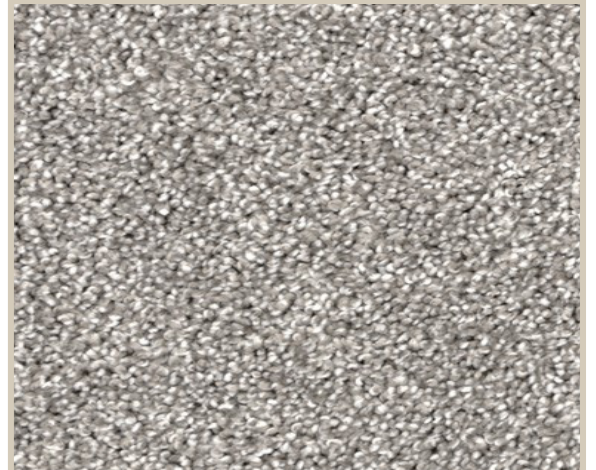
MELAMINE KITCHEN CABINETS



MELAMINE VANITY CABINETS



LAMINATE VANITY COUNTERTOPS



CARPET