

WILLOW RUN

2 HEMLOCK CRESCENT
AYLMER | ONTARIO

SEMI-DETACHED

PREMIUM
SPECS



THE DETAILS

| | |
|--------------|---------------|
| PRICE | \$539,000 |
| CLOSING DATE | Available Now |
| LOT NUMBER | 46A |
| BEDROOMS | 3 |
| BATHS | 2.5 |
| GARAGE | 1 |
| DRIVEWAY | 17' |
| SQ FT | 1,831 |
| MODEL | Semi |

Emma Smith SALES PROFESSIONAL

519.409.1474 | emma.smith@hayhoehomes.com



WILLOW RUN

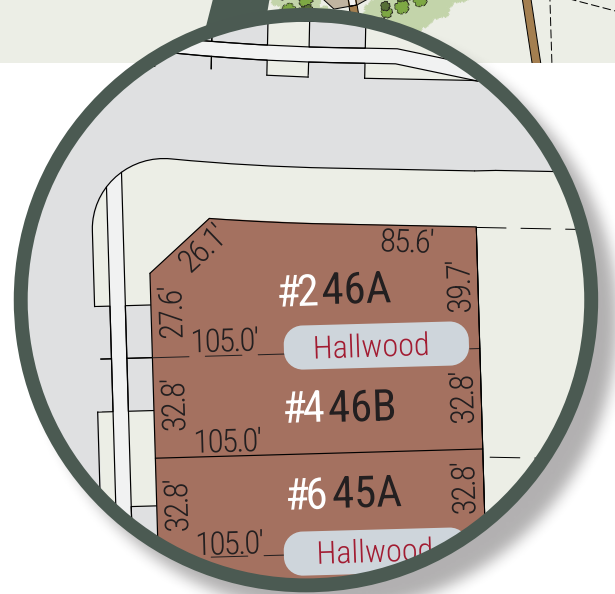
SITE PLAN

2 HEMLOCK CRESCENT | AYLMER ON



exterior features

- KEYLESS ENTRY
- TREATED WOOD DECK
- BBQ GAS LINE
- ASPHALT DRIVEWAY
- WALKING TRAILS



WILLOW RUN

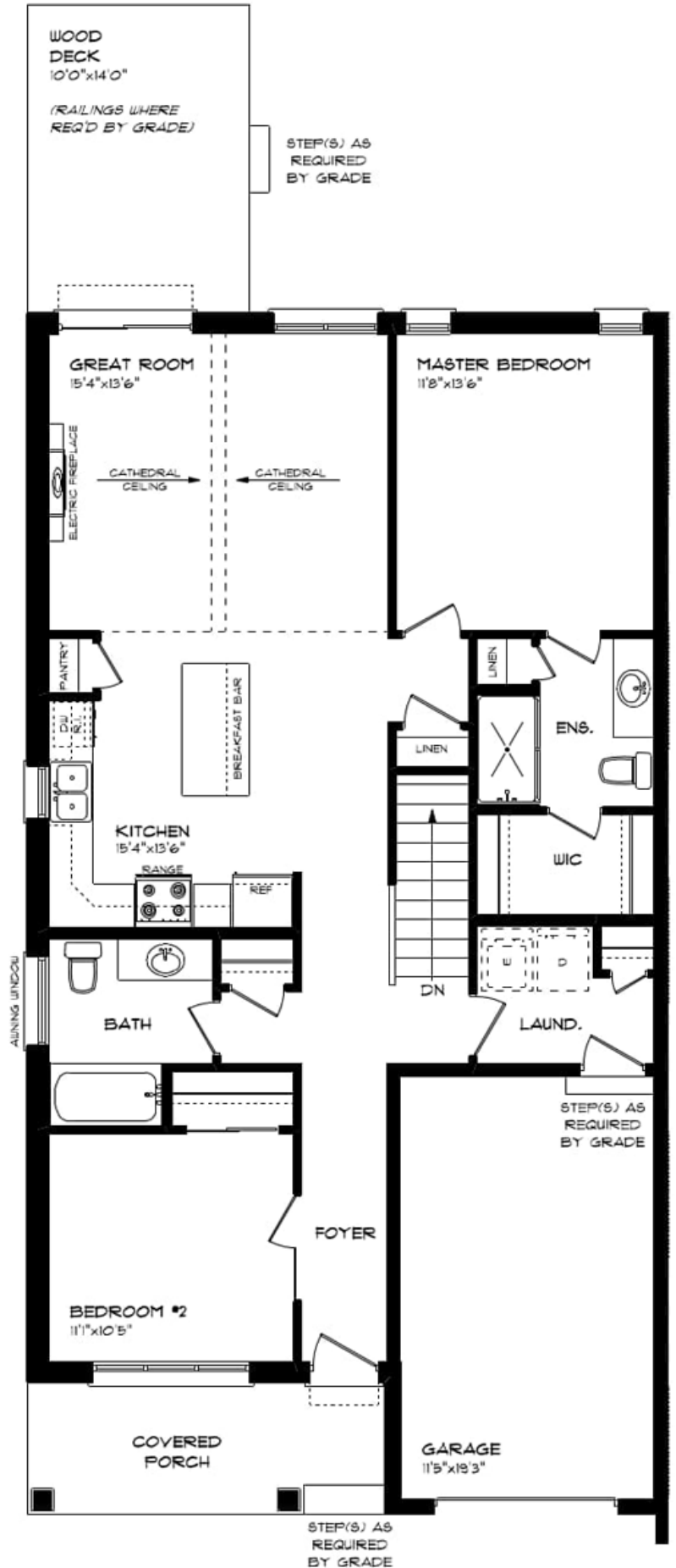
2 HEMLOCK CRESCENT

MAIN FLOOR

1,225 sq ft

features

- MAIN FLOOR LAUNDRY
- QUARTZ COUNTERTOPS
- KITCHEN BACKSPLASH
- DOUBLE CAR GARAGE
- ELECTRIC FIREPLACE



WILLOW RUN

2 HEMLOCK CRESCENT

LOWER LEVEL

606 sq ft

features

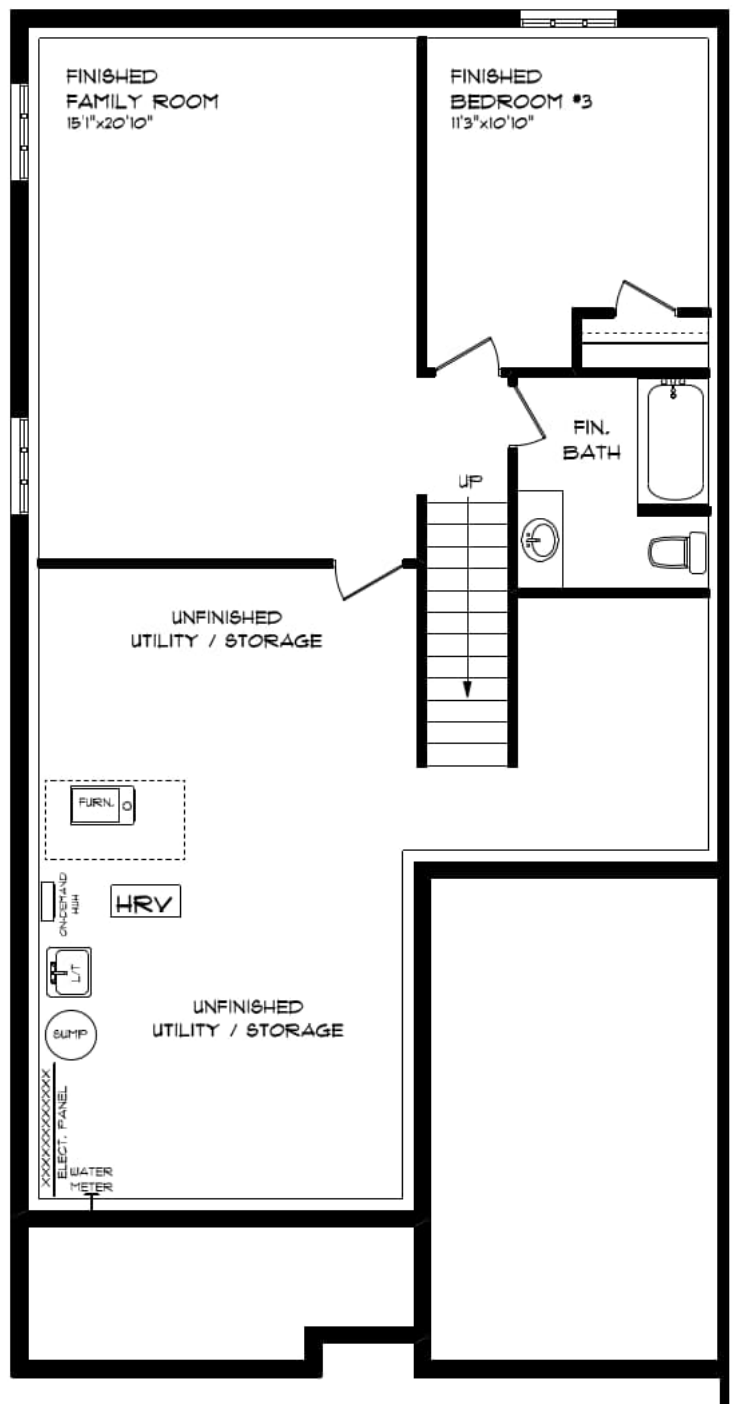
CARPET FLOORING

AIR CONDITIONING

GAS FURNACE WITH HRV

HUMIDIFIER

NEW HOME WARRANTY



WILLOW RUN

2 HEMLOCK CRESCENT



INTERIOR FINISHES

KITCHEN BACKSPLASH



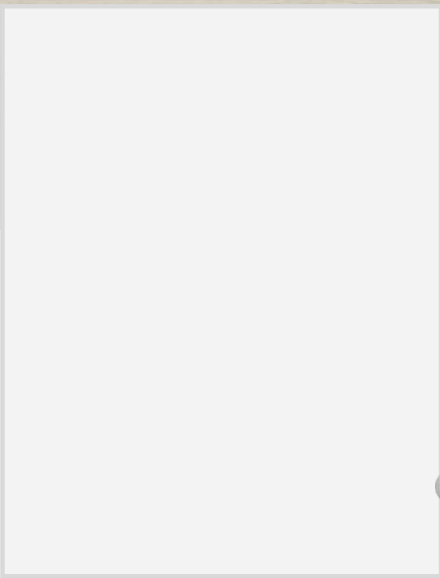
QUARTZ KITCHEN COUNTERTOPS



LUXURY VINYL PLANK



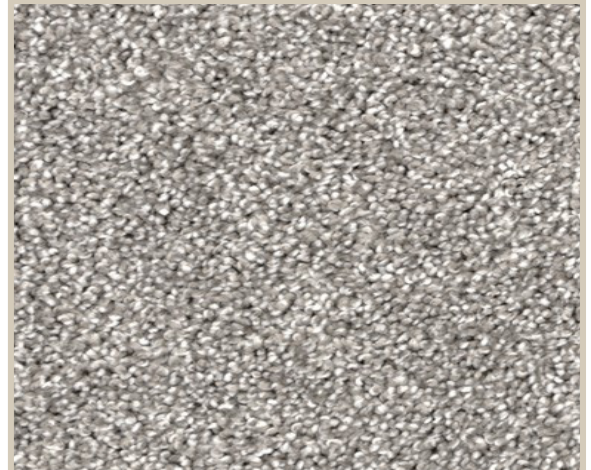
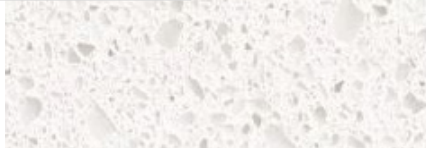
MELAMINE KITCHEN CABINETS



MELAMINE VANITY CABINETS



LAMINATE VANITY COUNTERTOPS



CARPET