

ROLLING MEADOWS

TOWNHOME

36 Finch Street | Tillsonburg ON

ESSENTIAL
SPECS



THE DETAILS

PRICE	\$589,000
CLOSING DATE	June 22, 2026
LOT NUMBER	37A
BEDROOMS	4
BATHS	2.5
GARAGE	2
DRIVEWAY	17'
SQ FT	1,976
MODEL	Clifton

Laura Babcock SALES PROFESSIONAL

519.520.0539 | laura.babcock@hayhoehomes.com



WWW.HAYHOEHOMES.COM

Price, products, colours & features are subject to change without notice. E. & O. E. SEPTEMBER 17, 2025

HAYHOETM
HOMES

ROLLING MEADOWS

SITE PLAN

36 Finch Street | Tillsonburg ON



exterior features

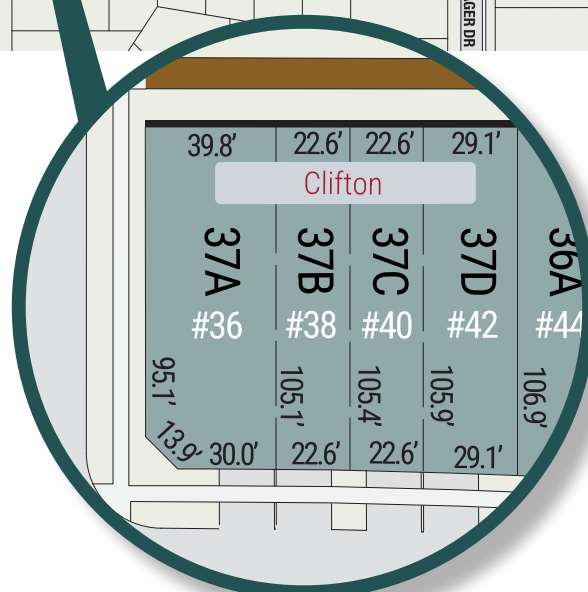
KEYLESS ENTRY

TREATED WOOD DECK

BBQ GAS LINE

ASPHALT DRIVEWAY

WALKING TRAILS



ROLLING MEADOWS

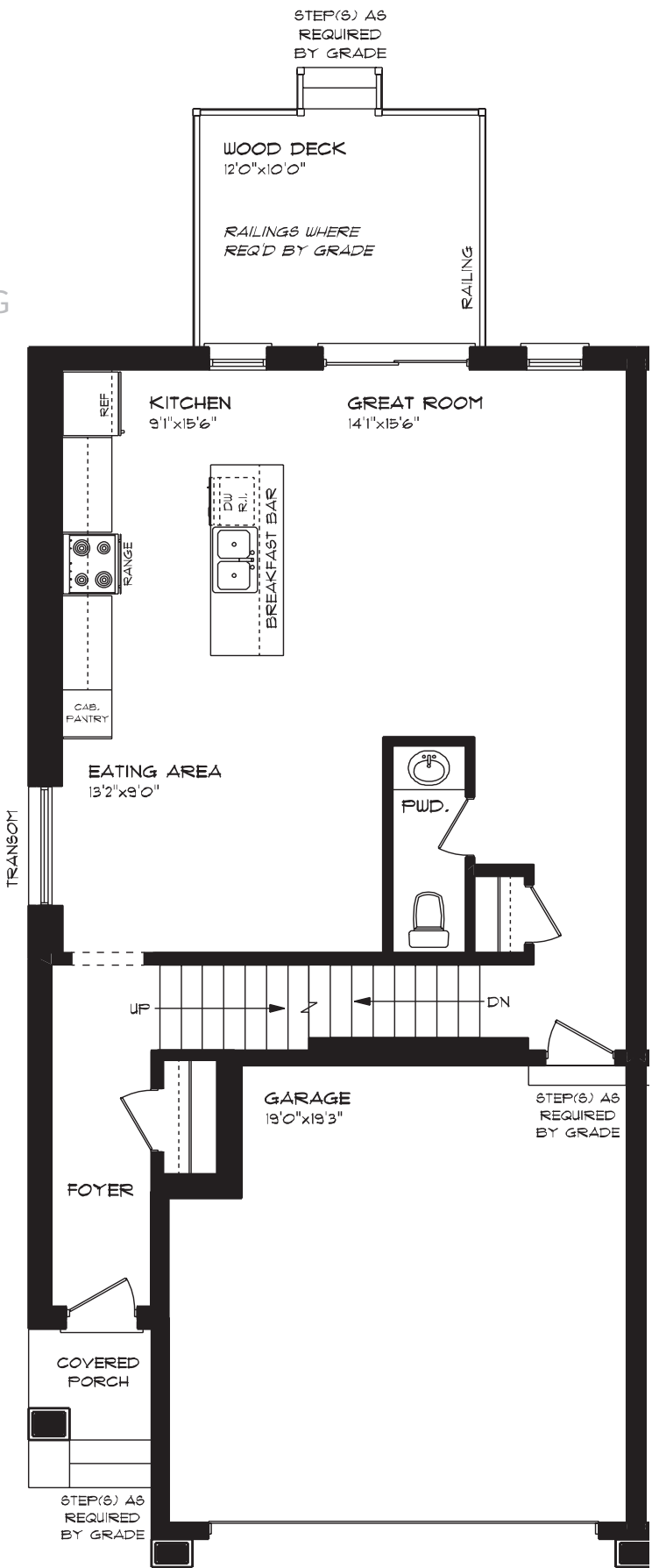
36 Finch Street | Tillsonburg ON

MAIN FLOOR

831 sq ft

features

- QUARTZ COUNTERTOPS
- LUXURY VINYL PLANK FLOORING
- KITCHEN ISLAND
- 8' MAIN FLOOR CEILING
- DOUBLE CAR GARAGE
- KITCHEN PANTRY



ROLLING MEADOWS

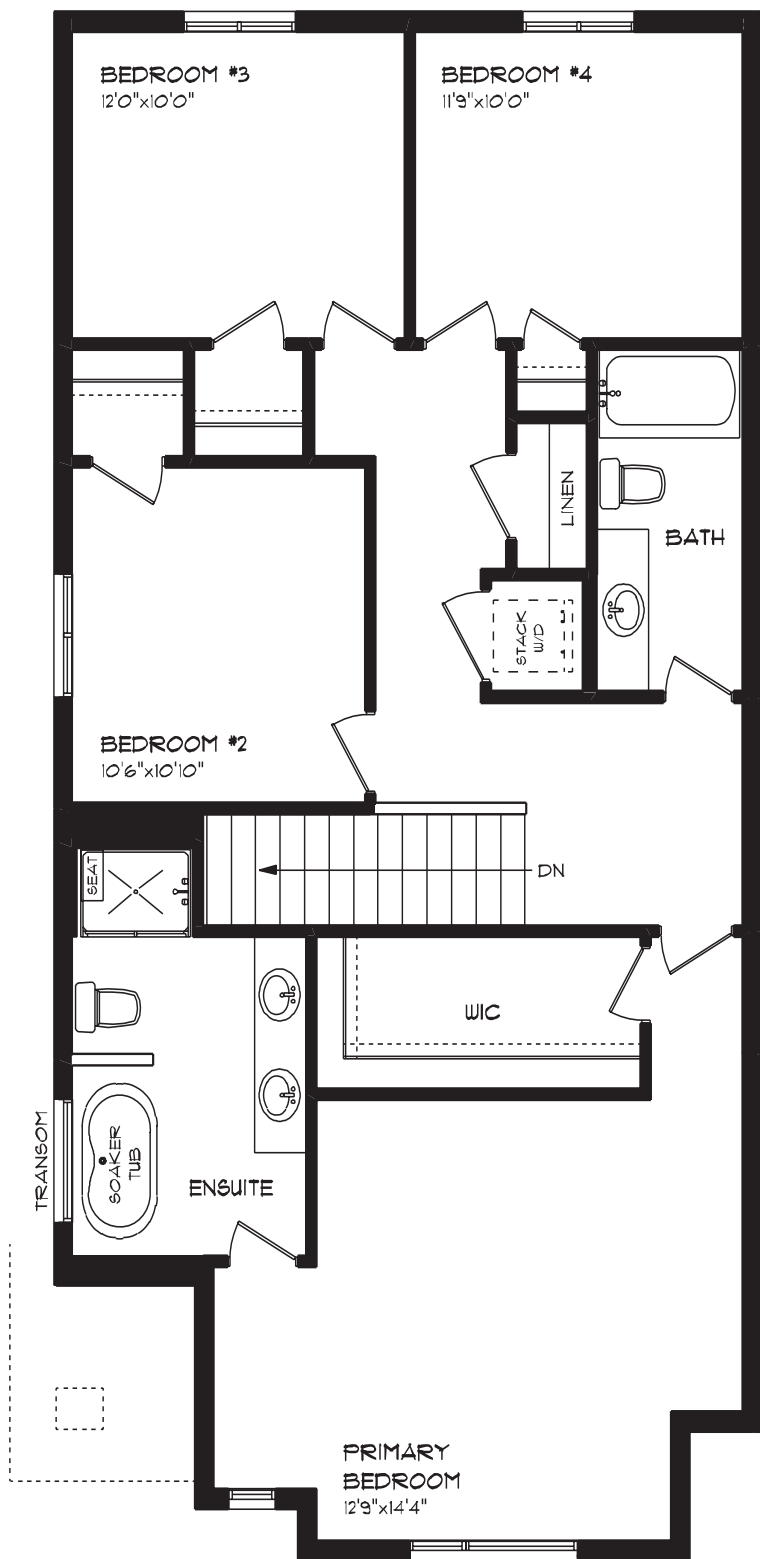
36 Finch Street | Tillsonburg ON

SECOND FLOOR

1,145 sq ft

features

- PROFESSIONALLY DESIGNED
- LUXURY VINYL PLANK FLOORING
- CARPET FLOORING
- ENSUITE BATH
- SECOND FLOOR LAUNDRY
- WALK-IN CLOSET



ROLLING MEADOWS

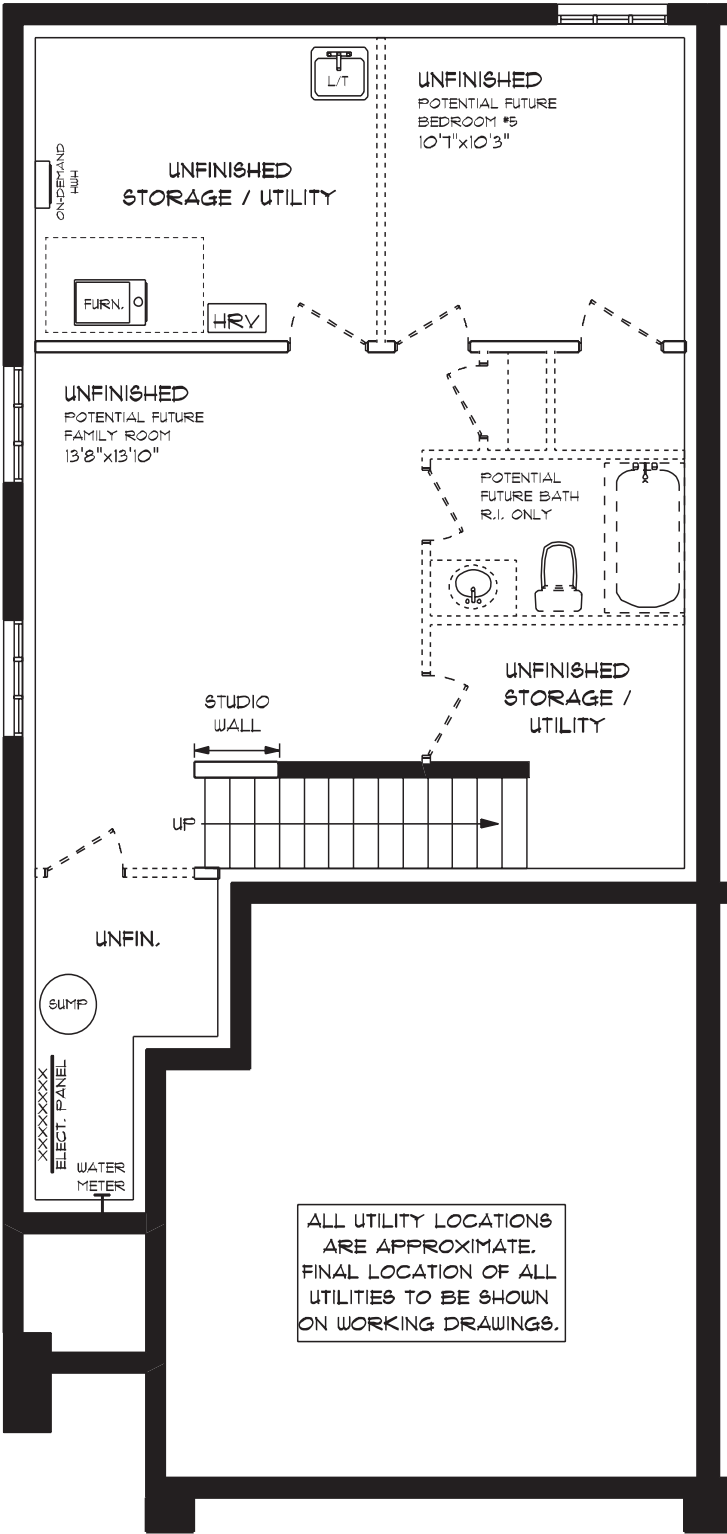
36 Finch Street | Tillsonburg ON

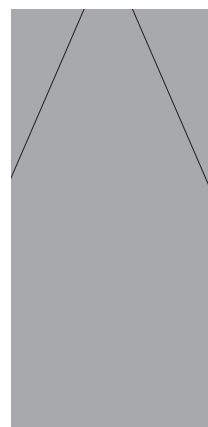
LOWER LEVEL

Unfinished

features

- AIR CONDITIONING
- GAS FURNACE WITH HRV
- HUMIDIFIER
- NEW HOME WARRANTY

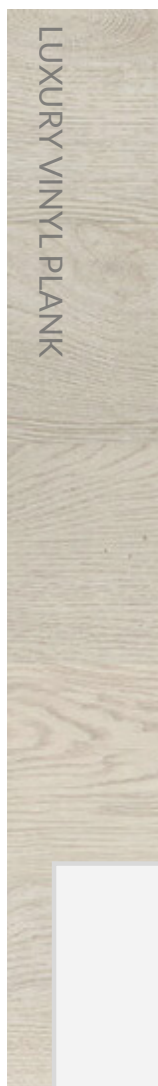




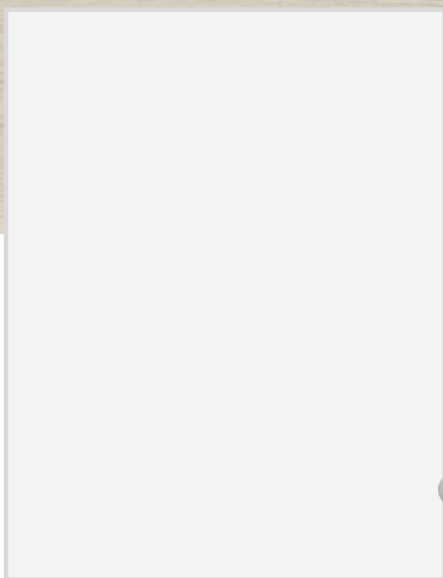
QUARTZ KITCHEN COUNTERTOPS



LUXURY VINYL PLANK



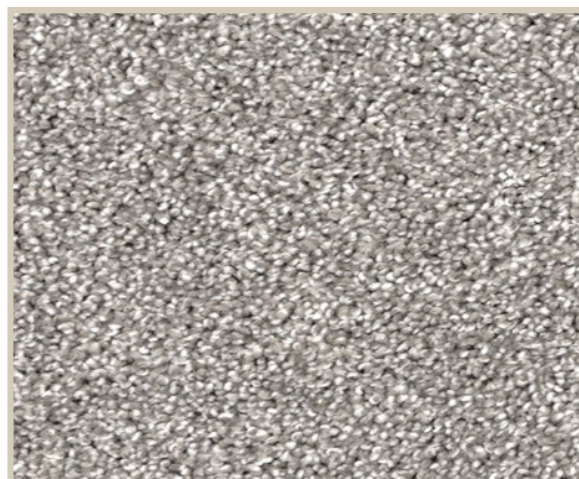
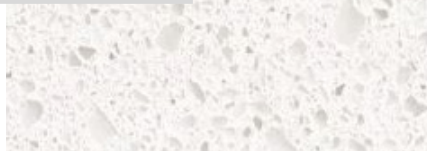
MELAMINE KITCHEN CABINETS



MELAMINE VANITY CABINETS



LAMINATE VANITY COUNTERTOPS



CARPET