

WILLOW RUN

67 WILLOW DRIVE

AYLMER | ONTARIO

TOWNHOME

PREMIUM
SPECS



THE DETAILS

PRICE	\$539,000
CLOSING DATE	Available Now
LOT NUMBER	2A
BEDROOMS	1+2
BATHS	2.5
GARAGE	2
DRIVEWAY	19'
SQ FT	1,979
MODEL	Townhome

Emma Smith SALES PROFESSIONAL

519.409.1474 | emma.smith@hayhoehomes.com



[WWW.HAYHOEHOMES.COM](http://www.hayhoehomes.com)

Price, products, colours & features are subject to change without notice. E. & O. E. NOVEMBER 2024

HAYHOETM
— HOMES —

WILLOW RUN

SITE PLAN

67 WILLOW DRIVE | AYLMER ON



exterior features

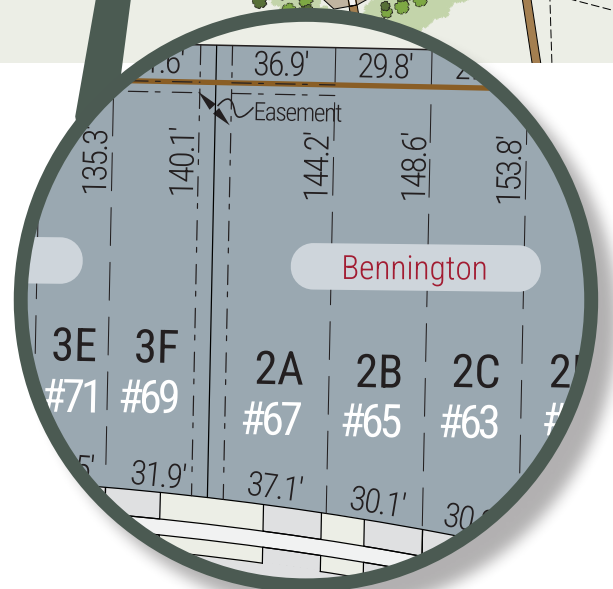
KEYLESS ENTRY

TREATED WOOD DECK

BBQ GAS LINE

ASPHALT DRIVEWAY

WALKING TRAILS



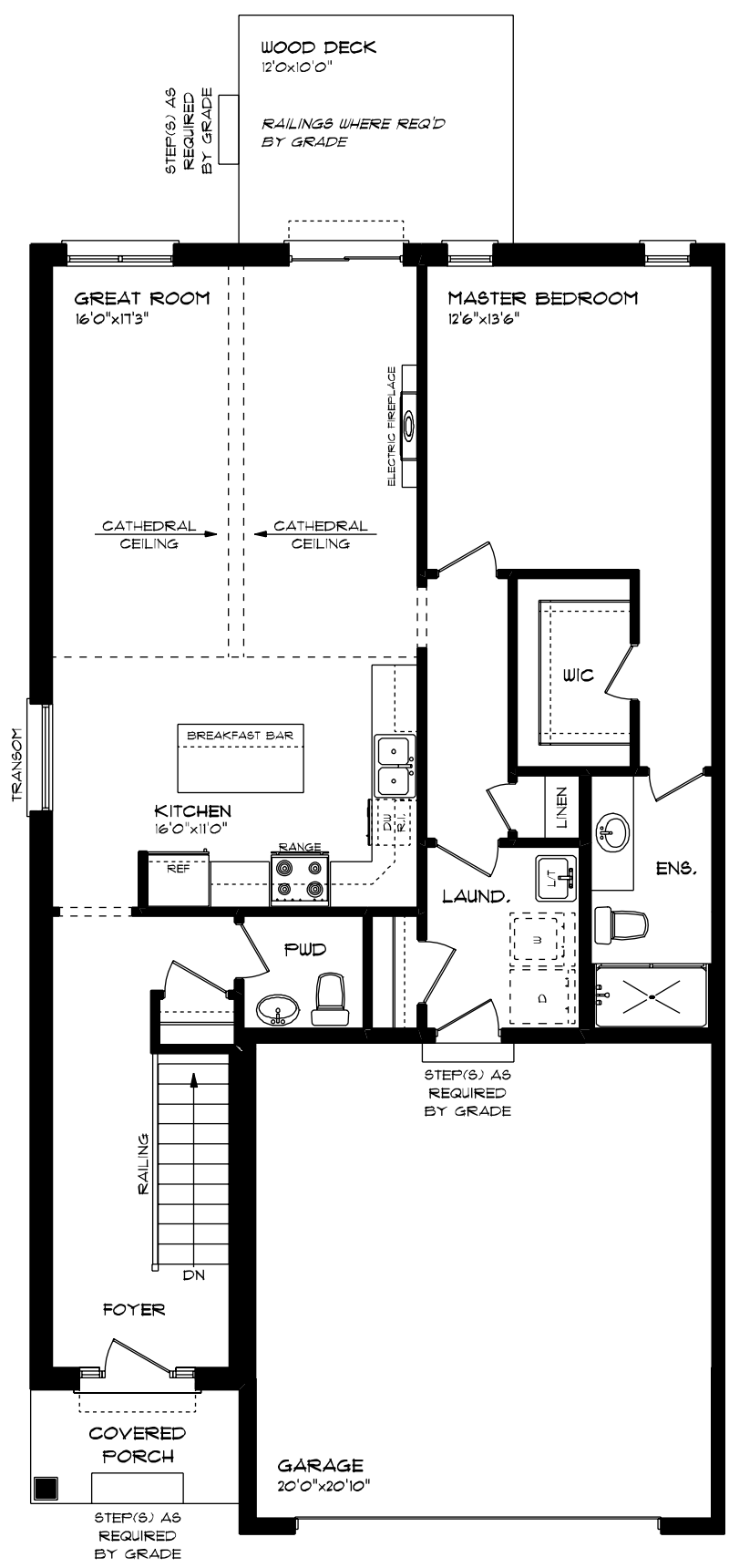
WILLOW RUN

67 WILLOW DRIVE

MAIN FLOOR
1,197 sq ft

features

- MAIN FLOOR LAUNDRY
- QUARTZ COUNTERTOPS
- KITCHEN BACKSPLASH
- DOUBLE CAR GARAGE



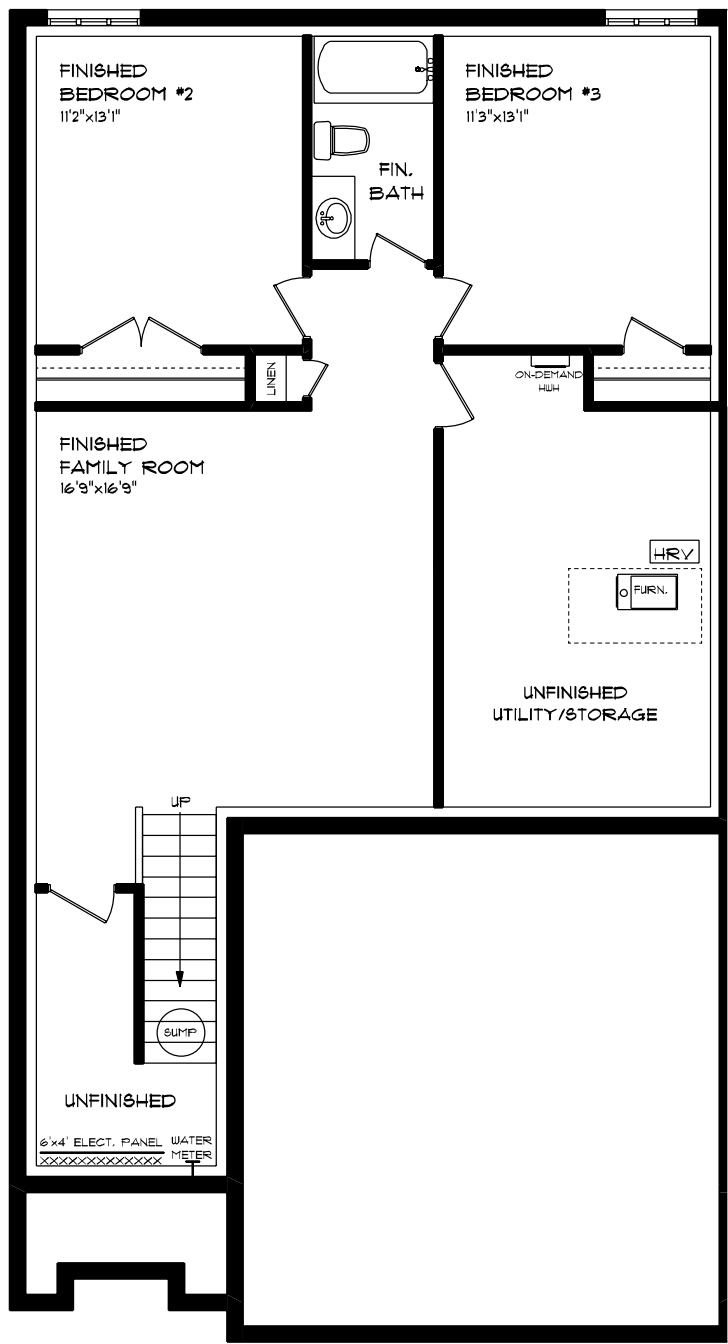
WILLOW RUN

67 WILLOW DRIVE

LOWER LEVEL
782 sq ft

features

- CARPET FLOORING
- AIR CONDITIONING
- GAS FURNACE WITH HRV
- HUMIDIFIER
- NEW HOME WARRANTY



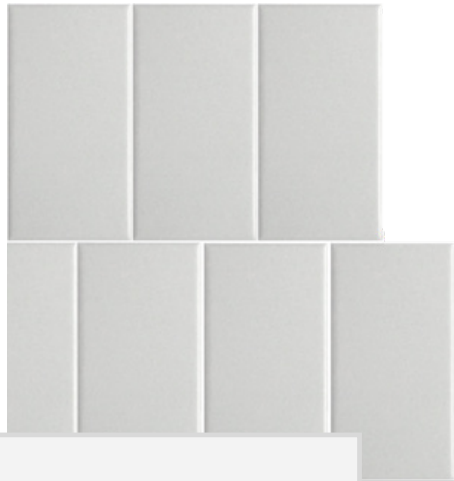
WILLOW RUN

67 WILLOW DRIVE

INTERIOR FINISHES



KITCHEN BACKSPLASH



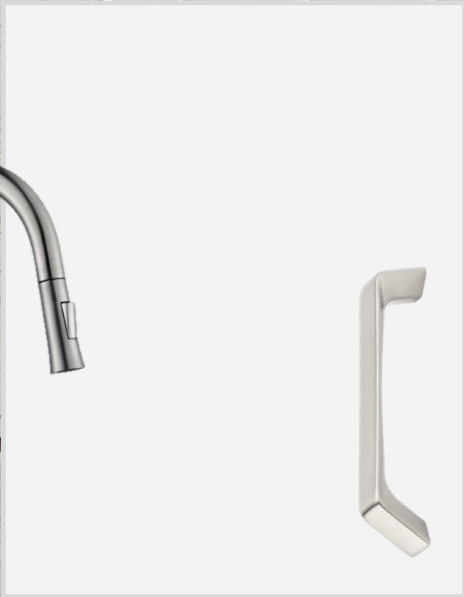
QUARTZ KITCHEN COUNTERTOPS



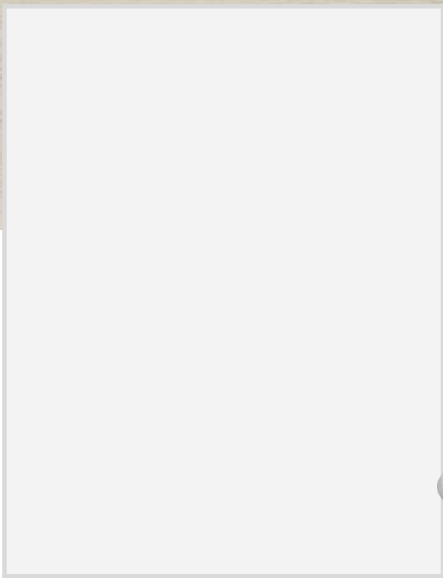
LUXURY VINYL PLANK



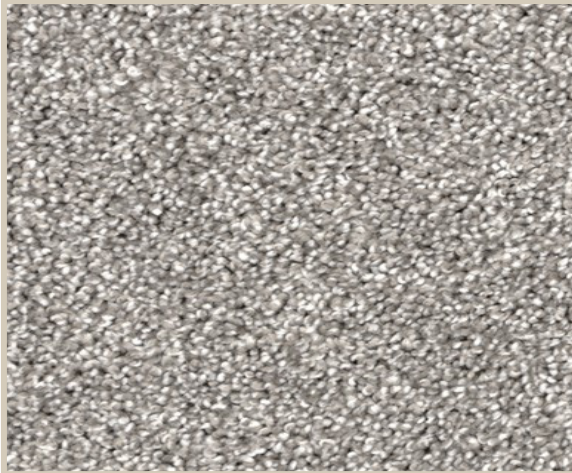
MELAMINE KITCHEN
CABINETRY



MELAMINE VANITY
CABINETRY



LAMINATE VANITY
COUNTERTOPS



CARPET