

WILLOW RUN

100 WILLOW DRIVE

AYLMER | ONTARIO

TOWNHOME



THE DETAILS

PRICE	\$499,000
CLOSING DATE	December 10, 2026
LOT NUMBER	9E
BEDROOMS	2
BATHS	2
GARAGE	1
DRIVEWAY	17'
SQ FT	1,286
MODEL	Townhome

Emma Smith SALES PROFESSIONAL

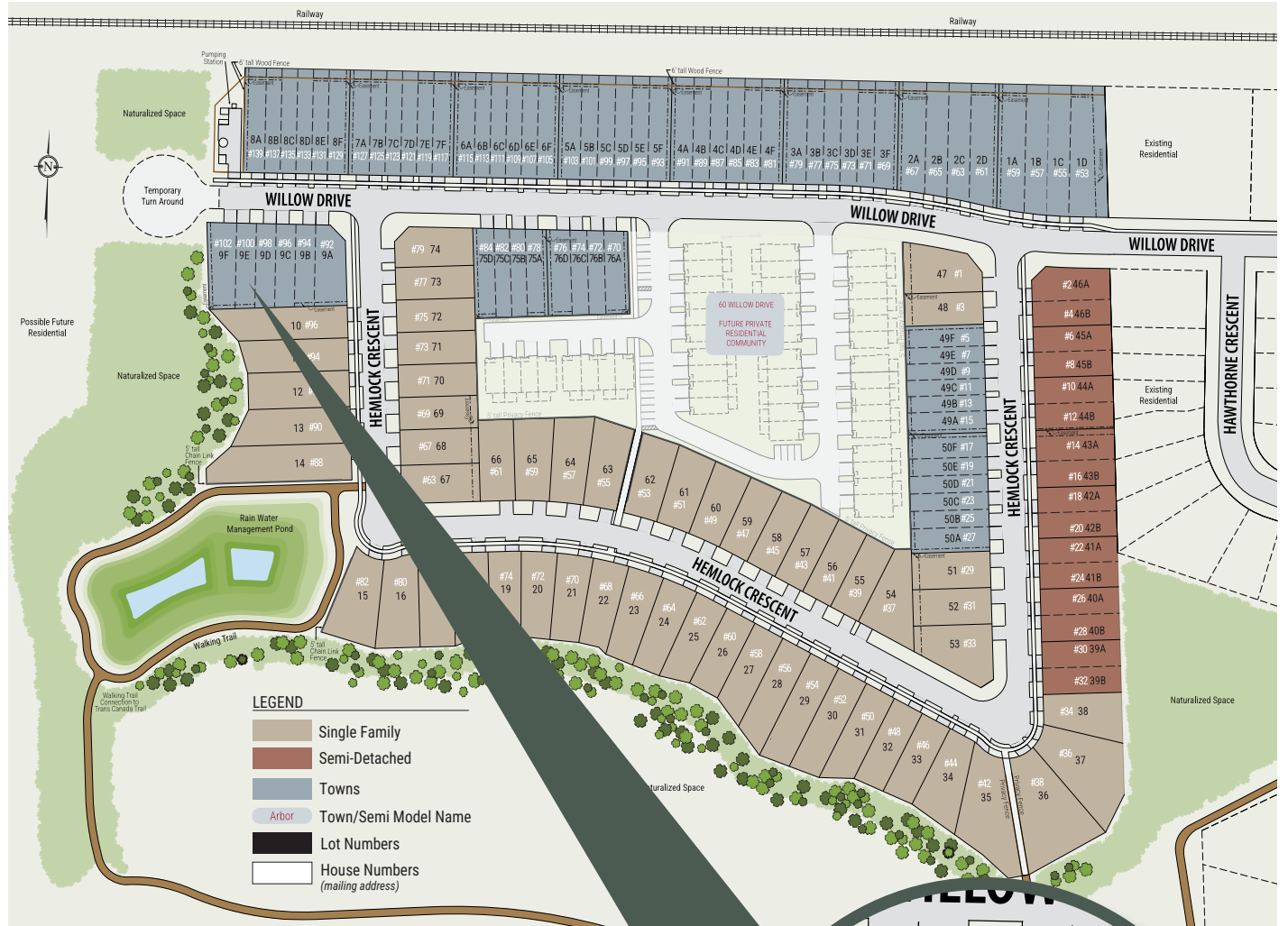
519.409.1474 | emma.smith@hayhoehomes.com



WILLOW RUN

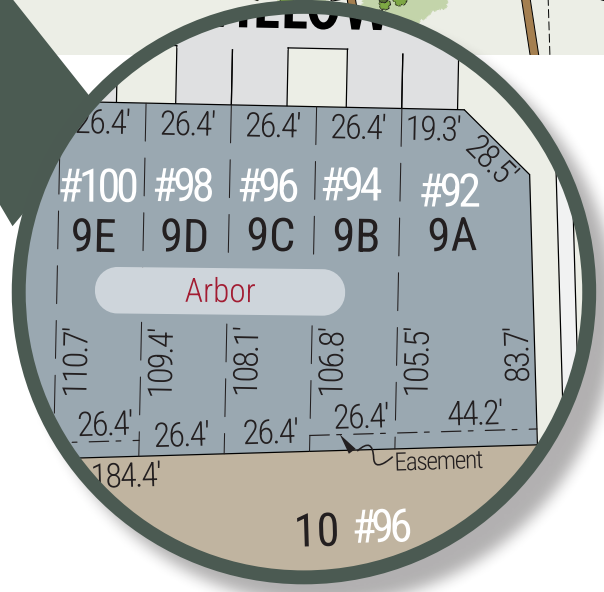
SITE PLAN

100 WILLOW DRIVE | AYLMER ON



exterior features

- KEYLESS ENTRY
- TREATED WOOD DECK
- ASPHALT DRIVEWAY
- WALKING TRAILS



WILLOW RUN

100 WILLOW DRIVE

MAIN FLOOR

1,286 sq ft

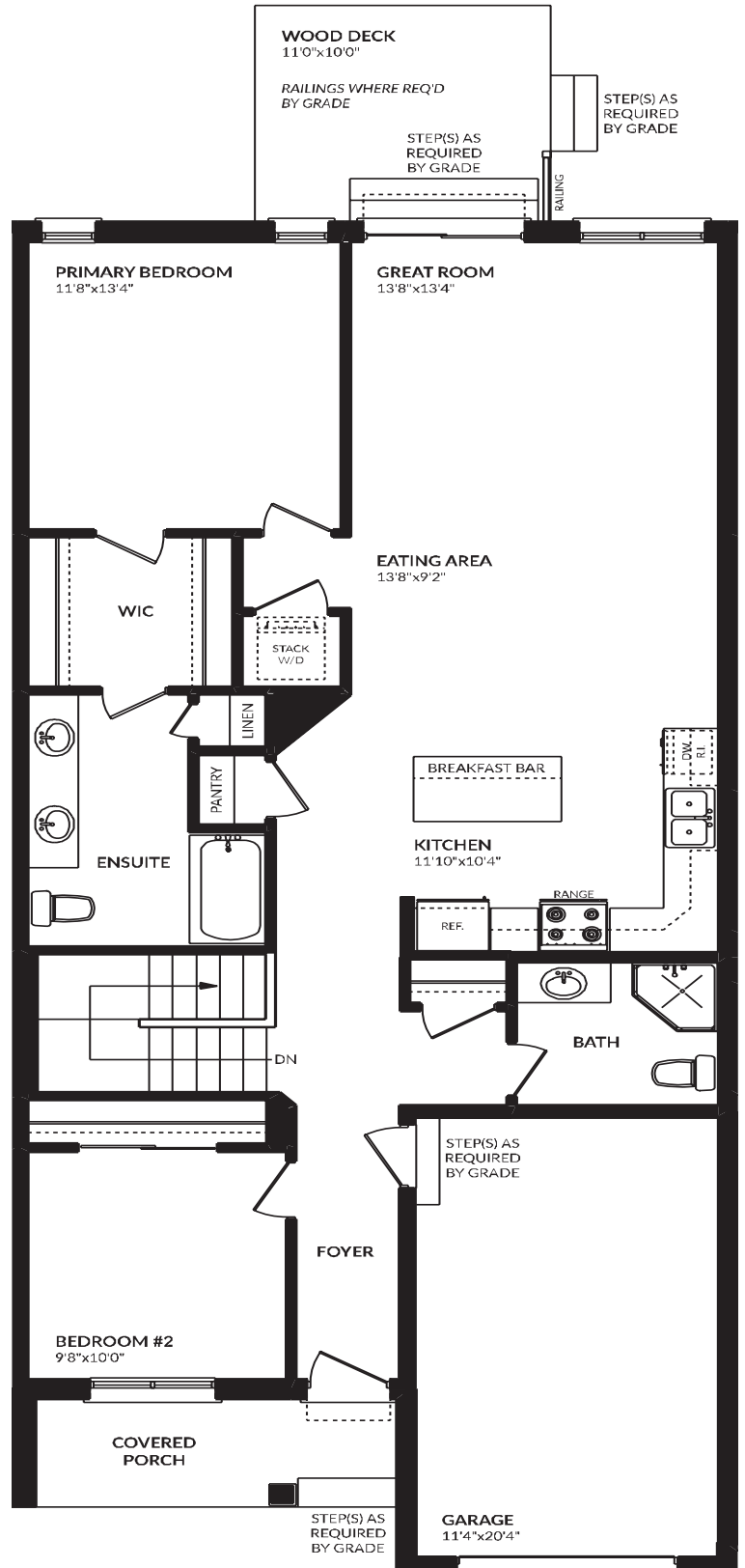
features

VINYL PLANK FLOORING

QUARTZ COUNTERTOPS

KITCHEN ISLAND

9' CEILINGS



WILLOW RUN

100 WILLOW DRIVE

LOWER LEVEL

Unfinished

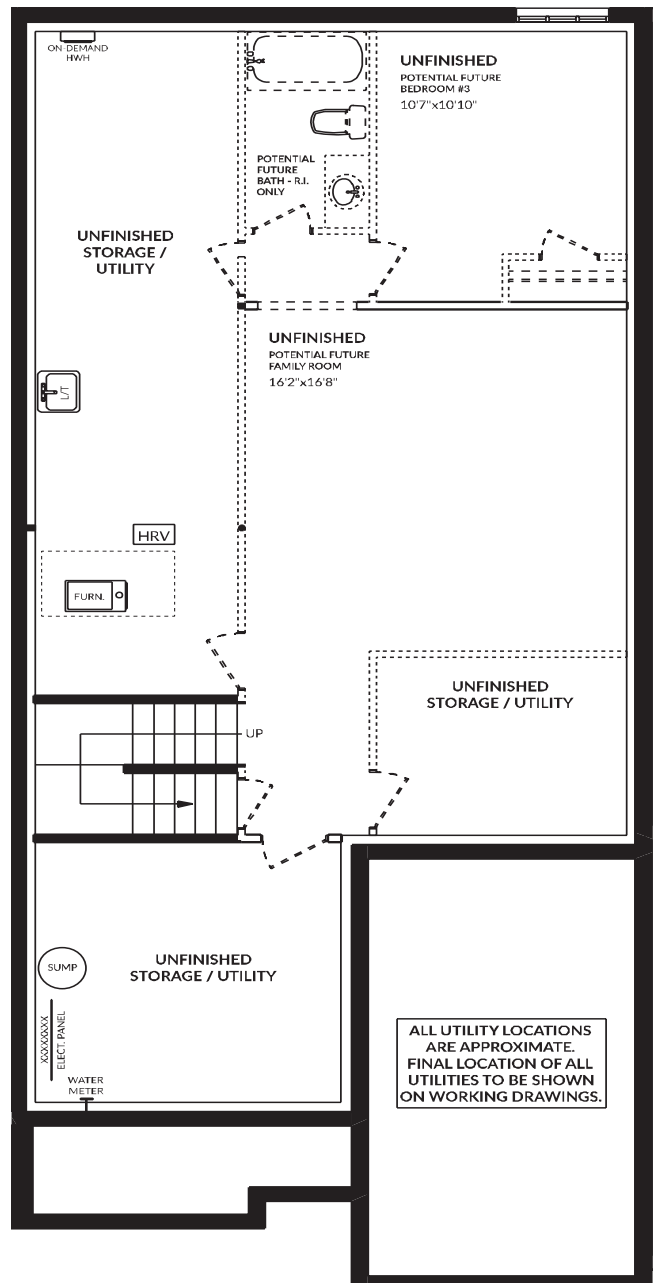
features

AIR CONDITIONING

GAS FURNACE WITH HRV

HUMIDIFIER

NEW HOME WARRANTY



WILLOW RUN

100 WILLOW DRIVE

INTERIOR FINISHES

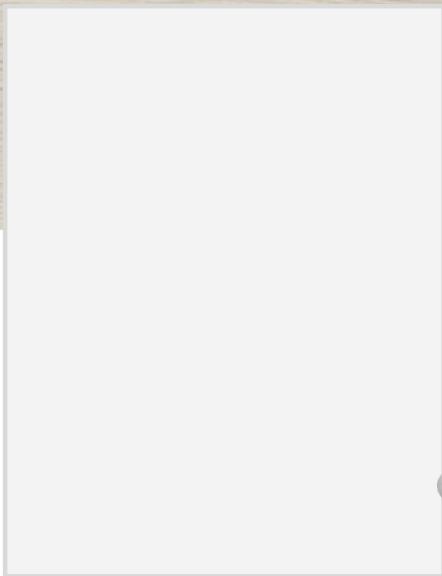


QUARTZ KITCHEN COUNTERTOPS

LUXURY VINYL PLANK



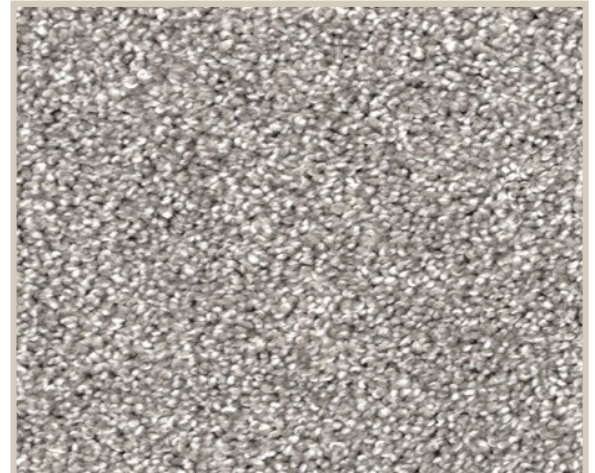
MELAMINE KITCHEN CABINETS



MELAMINE VANITY CABINETS



LAMINATE VANITY COUNTERTOPS



CARPET