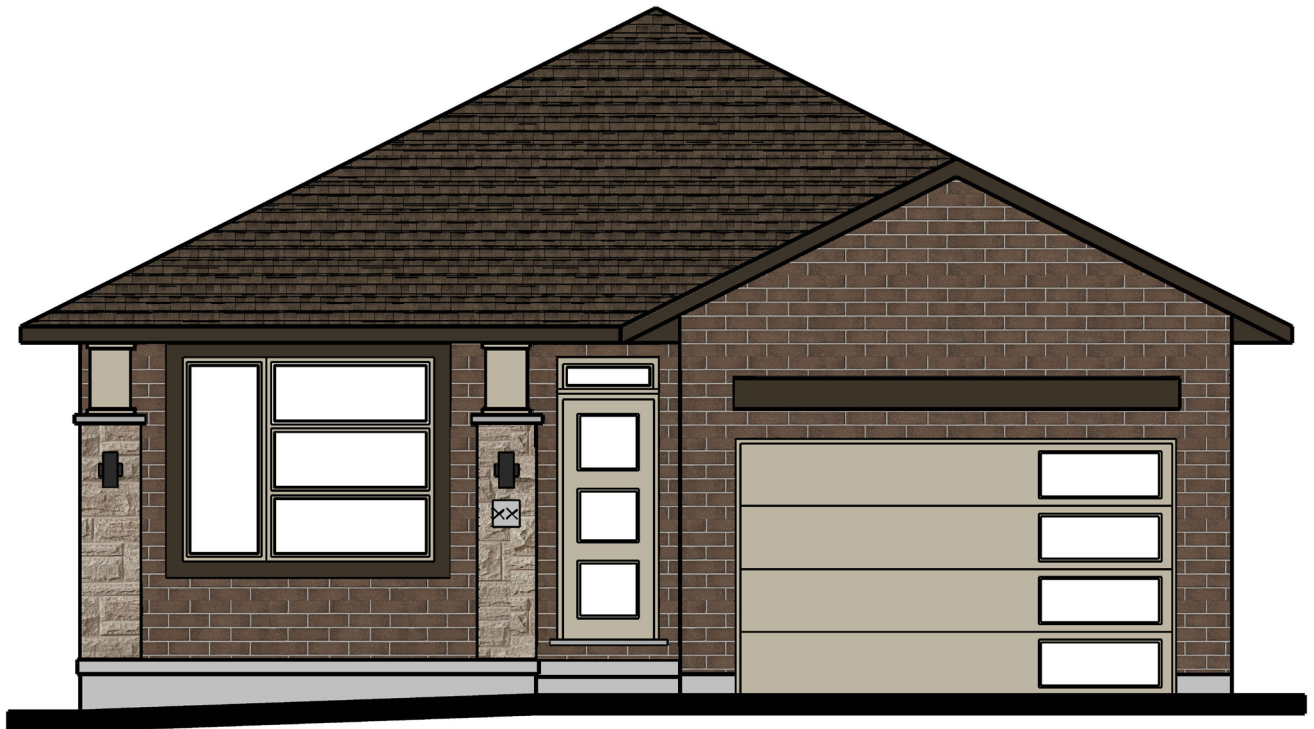


ROLLING MEADOWS

INVENTORY HOME

7 Finch Street | Tillsonburg ON



THE DETAILS

| | |
|--------------|---------------|
| PRICE | \$710,000 |
| CLOSING DATE | Available Now |
| LOT NUMBER | 17 |
| BEDROOMS | 3 |
| BATHS | 3 |
| GARAGE | 1 |
| DRIVEWAY | 18' |
| SQ FT | 1,896 |
| MODEL | Rumford |

Laura Babcock SALES PROFESSIONAL

519.520.0539 | laura.babcock@hayhoehomes.com



WWW.HAYHOEHOMES.COM

Price, products, colours & features are subject to change without notice. E. & O. E. AUG 20 2025

HAYHOE[™]
HOMES

ROLLING MEADOWS

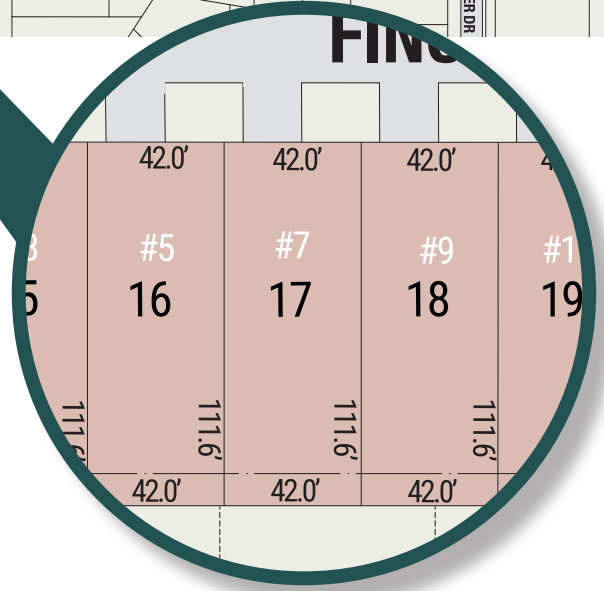
SITE PLAN

7 Finch Street | Tillsonburg ON



exterior features

- KEYLESS ENTRY
- TREATED WOOD DECK
- BBQ GAS LINE
- ASPHALT DRIVEWAY
- WALKING TRAILS



ROLLING MEADOWS

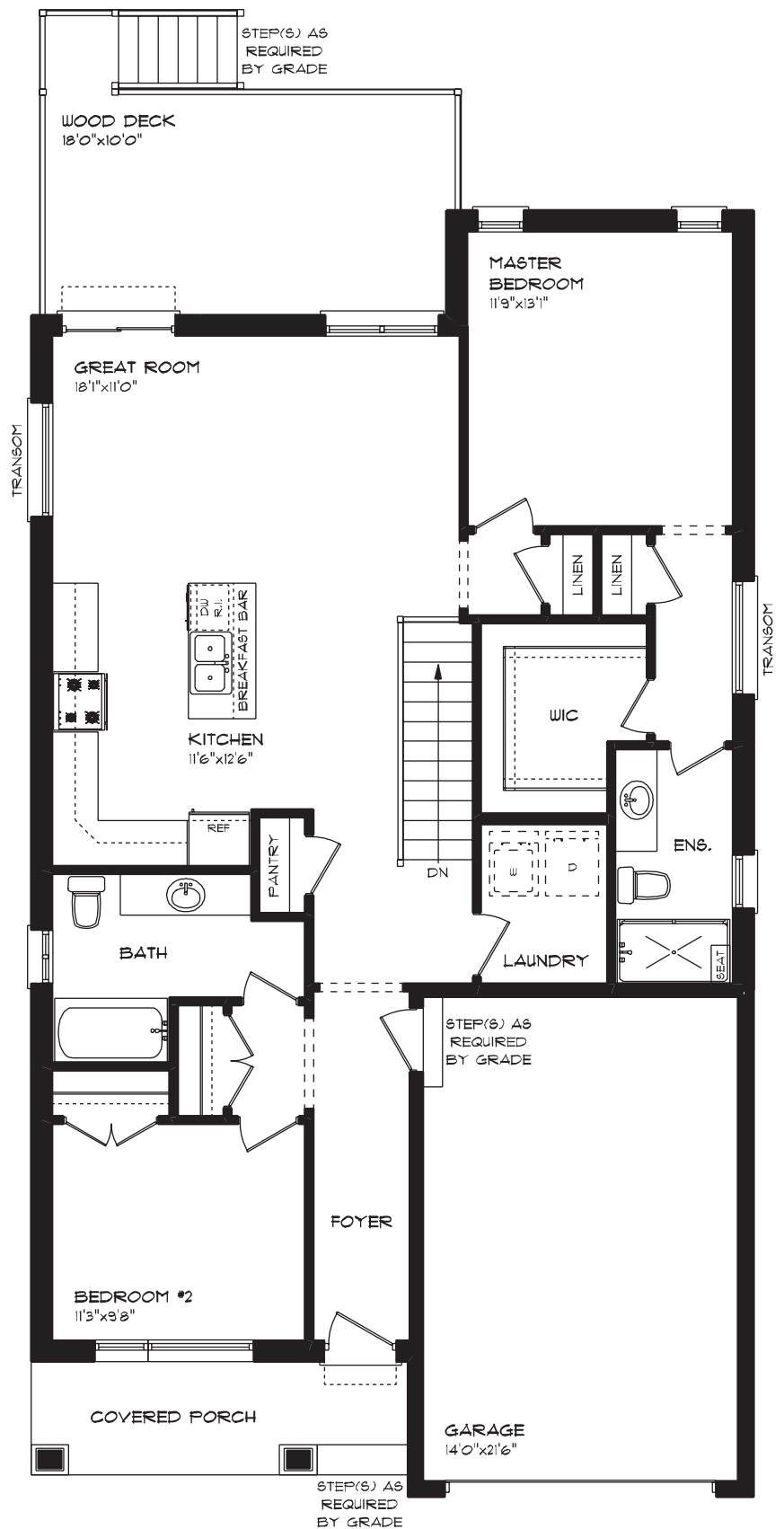
7 Finch Street | Tillsonburg ON

MAIN FLOOR

1,310 sq ft

features

- MAIN FLOOR LAUNDRY
- QUARTZ COUNTERTOPS
- QUARTZ BACKSPLASH
- SINGLE CAR GARAGE
- KITCHEN ISLAND
- POT LIGHTS
- HARDWOOD FLOORING
- TILE FLOORING



ROLLING MEADOWS

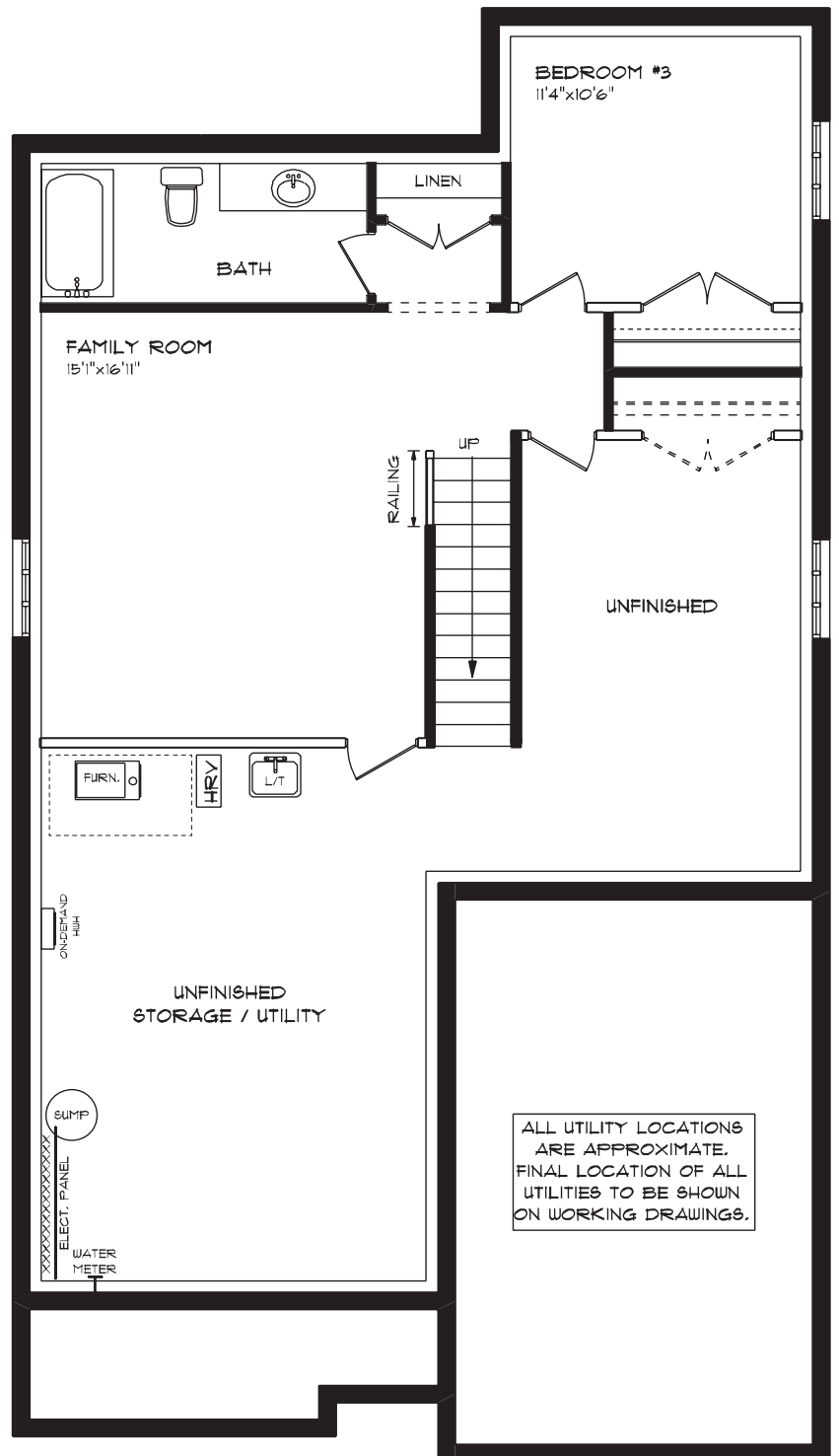
7 Finch Street | Tillsonburg ON

LOWER LEVEL

586 sq ft

features

- CARPET FLOORING
- FINISHED FAMILY ROOM
- FINISHED BED & BATH
- AIR CONDITIONING
- GAS FURNACE WITH HRV
- HUMIDIFIER
- NEW HOME WARRANTY



ROLLING MEADOWS

7 Finch Street | Tillsonburg ON

EXTERIOR FINISHES

SHINGLES

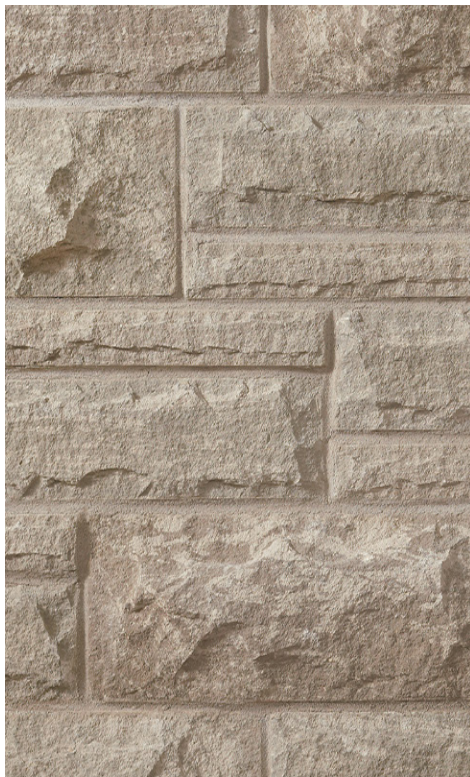


BRICK



FRONT DOOR

STONE ACCENT



ALUMINUM



WINDOWS & GARAGE DOOR

ROLLING MEADOWS

7 Finch Street | Tillsonburg ON

INTERIOR FINISHES

QUARTZ KITCHEN COUNTERTOPS & BACKSPLASH



WALL COLOUR

PAINTED KITCHEN CABINETRY

TILE THROUGHOUT

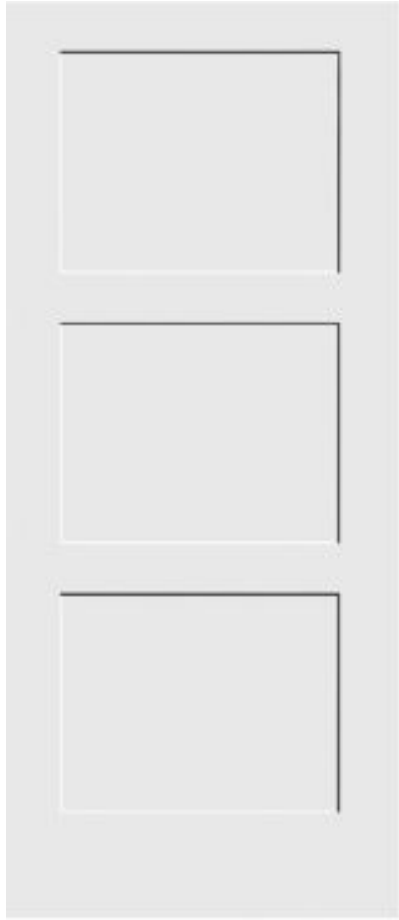
STAINLED KITCHEN ACCENTS

ROLLING MEADOWS

7 Finch Street | Tillsonburg ON

INTERIOR FINISHES

CARPET



INTERIOR DOOR STYLE

QUARTZ ENSUITE COUNTERTOP



TILE THROUGHOUT



STAINED ENSUITE VANITY



STAINED MAIN BATH VANITY

WALL COLOUR



QUARTZ
MAIN BATH
COUNTERTOP

