

# WILLOW RUN

107 WILLOW DRIVE

AYLMER | ONTARIO

TOWNHOME



## THE DETAILS

PRICE	\$484,000
CLOSING DATE	Available Now
LOT NUMBER	6E
BEDROOMS	3
BATHS	2.5
GARAGE	1
DRIVEWAY	17'
SQ FT	1,622
MODEL	Townhome

**Emma Smith** SALES PROFESSIONAL

519.409.1474 | emma.smith@hayhoehomes.com



# WILLOW RUN

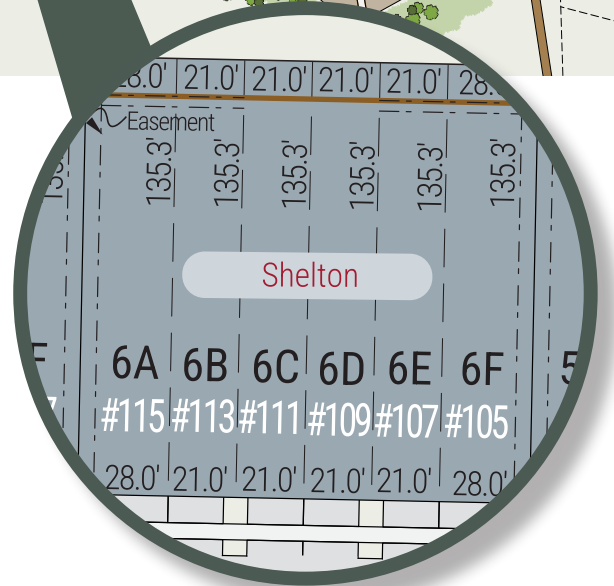
## SITE PLAN

107 WILLOW DRIVE | AYLMER ON



### exterior features

- KEYLESS ENTRY
- TREATED WOOD DECK
- ASPHALT DRIVEWAY
- WALKING TRAILS



# WILLOW RUN

107 WILLOW DRIVE

## MAIN FLOOR

765 sq ft

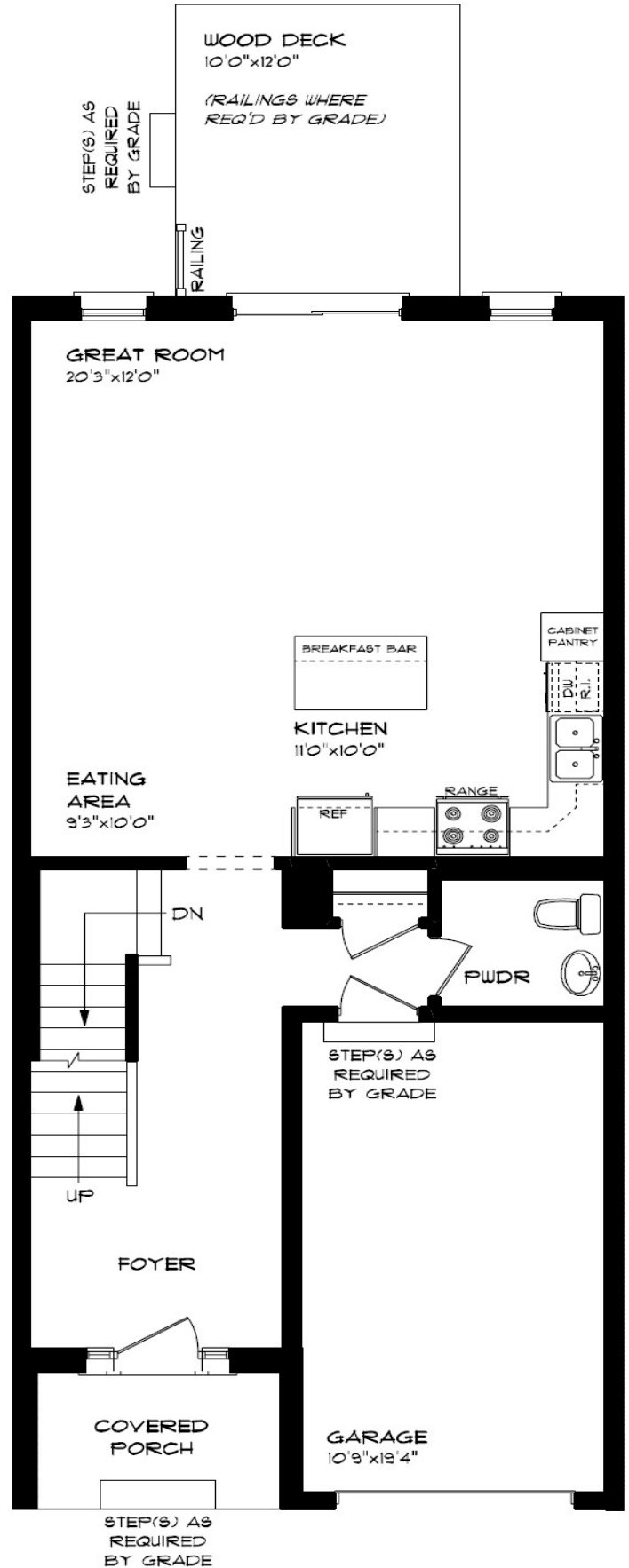
### features

QUARTZ COUNTERTOPS

VINYL PLANK FLOORING

KITCHEN ISLAND

8' CEILINGS



# WILLOW RUN

107 WILLOW DRIVE

## SECOND FLOOR

857 sq ft

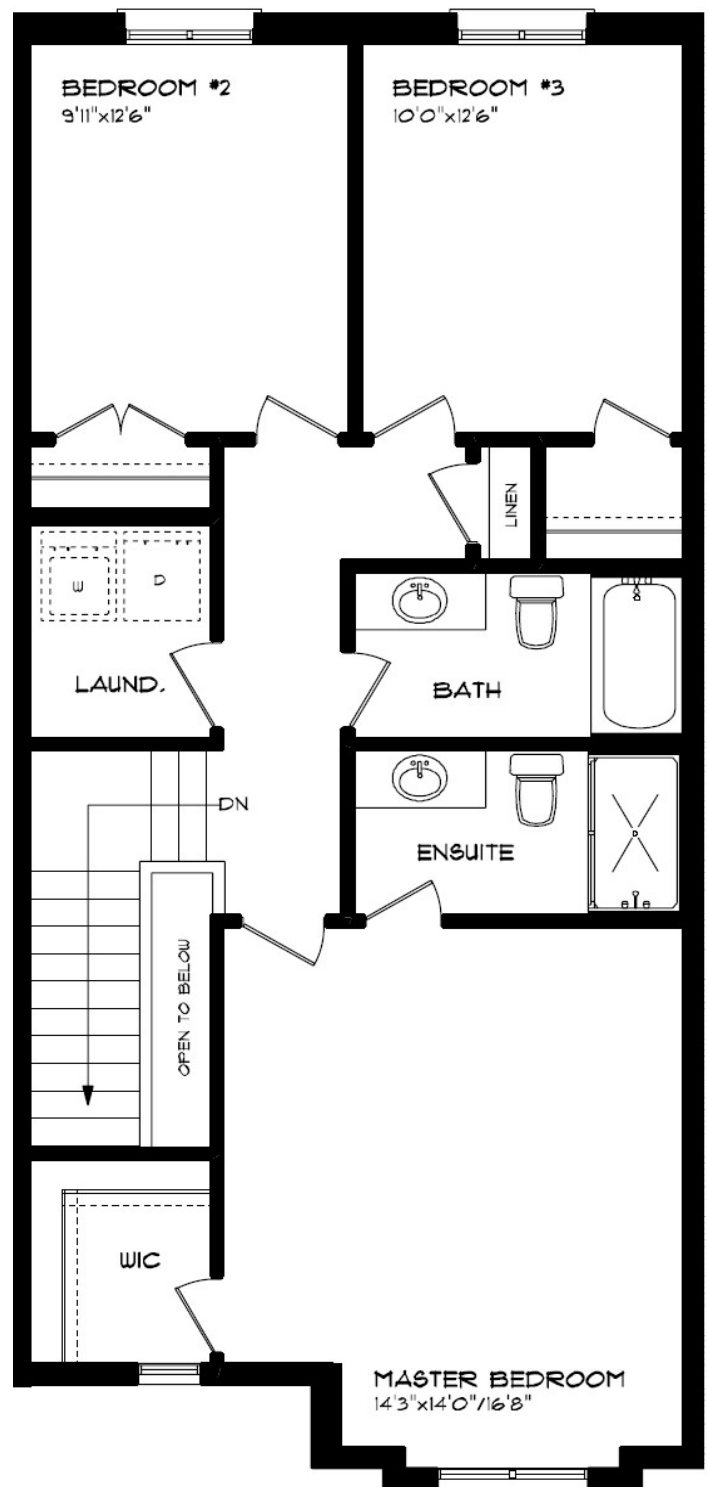
### *features*

PROFESSIONALLY DESIGNED

CARPET FLOORING

VINYL PLANK FLOORING

WALK-IN CLOSET



# WILLOW RUN

107 WILLOW DRIVE

## LOWER LEVEL UNFINISHED

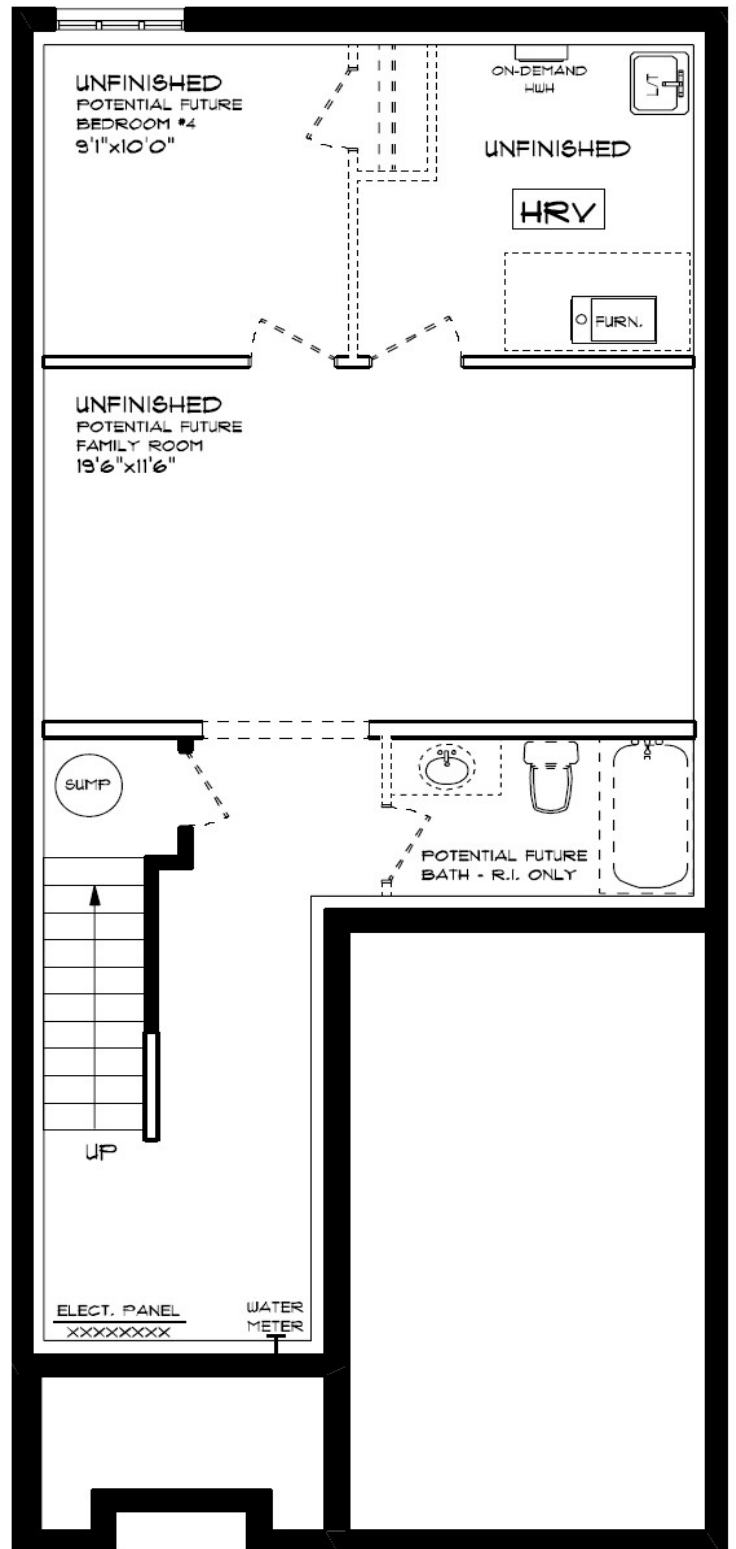
### *features*

AIR CONDITIONING

GAS FURNACE WITH HRV

HUMIDIFIER

NEW HOME WARRANTY



# WILLOW RUN

107 WILLOW DRIVE

## INTERIOR FINISHES

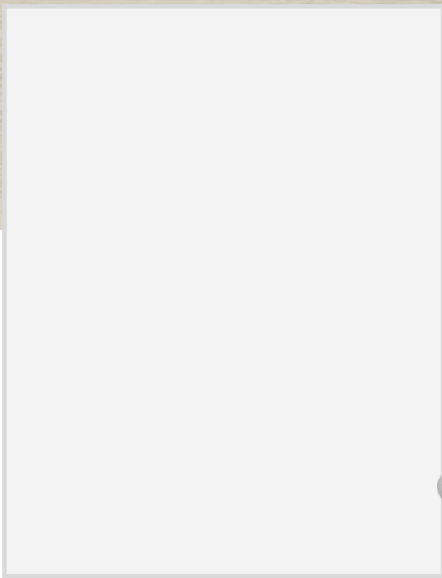


QUARTZ KITCHEN COUNTERTOPS

LUXURY VINYL PLANK



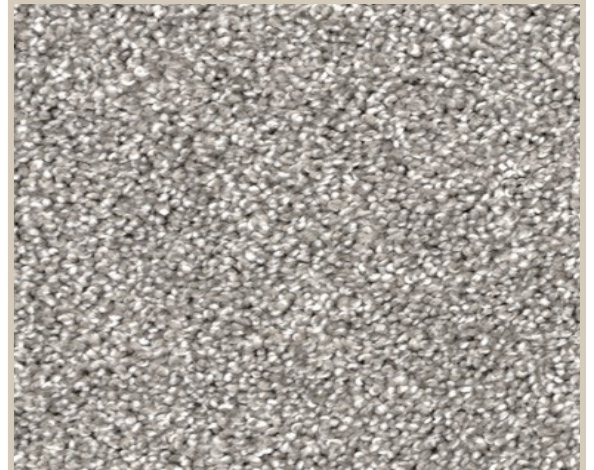
MELAMINE KITCHEN CABINETS



MELAMINE VANITY CABINETS



LAMINATE VANITY COUNTERTOPS



CARPET