

WILLOW RUN

22 HEMLOCK CRESCENT

AYLMER | ONTARIO

SEMI-DETACHED



THE DETAILS

PRICE	\$533,000
CLOSING DATE	Available Now
LOT NUMBER	41A
BEDROOMS	2
BATHS	2
GARAGE	1
DRIVEWAY	17'
SQ FT	1,225
MODEL	Semi-Detached

Emma Smith SALES PROFESSIONAL

519.409.1474 | emma.smith@hayhoehomes.com



[WWW.HAYHOEHOMES.COM](http://www.hayhoehomes.com)

Price, products, colours & features are subject to change without notice. E. & O. E. DECEMBER 28, 2024

HAYHOETM
HOMES

WILLOW RUN

SITE PLAN

22 HEMLOCK CRESCENT | AYLMER ON



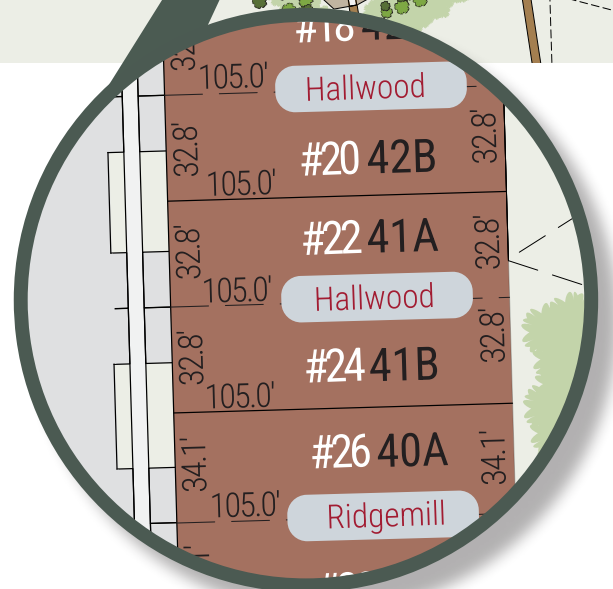
exterior features

KEYLESS ENTRY

TREATED WOOD DECK

ASPHALT DRIVEWAY

WALKING TRAILS



22 HEMLOCK CRESCENT

MAIN FLOOR

1,225 sq ft

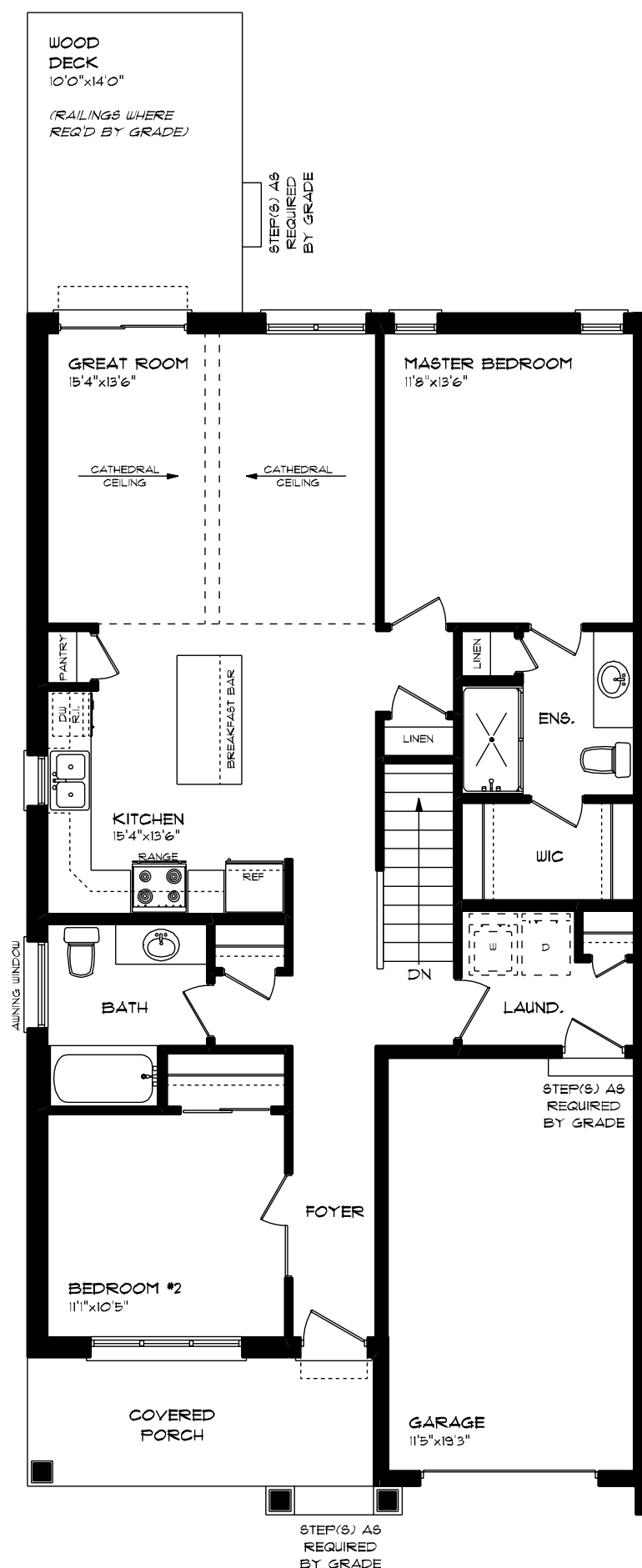
features

MAIN FLOOR LAUNDRY

QUARTZ COUNTERTOPS

VINYL PLANK FLOORING

KITCHEN ISLAND



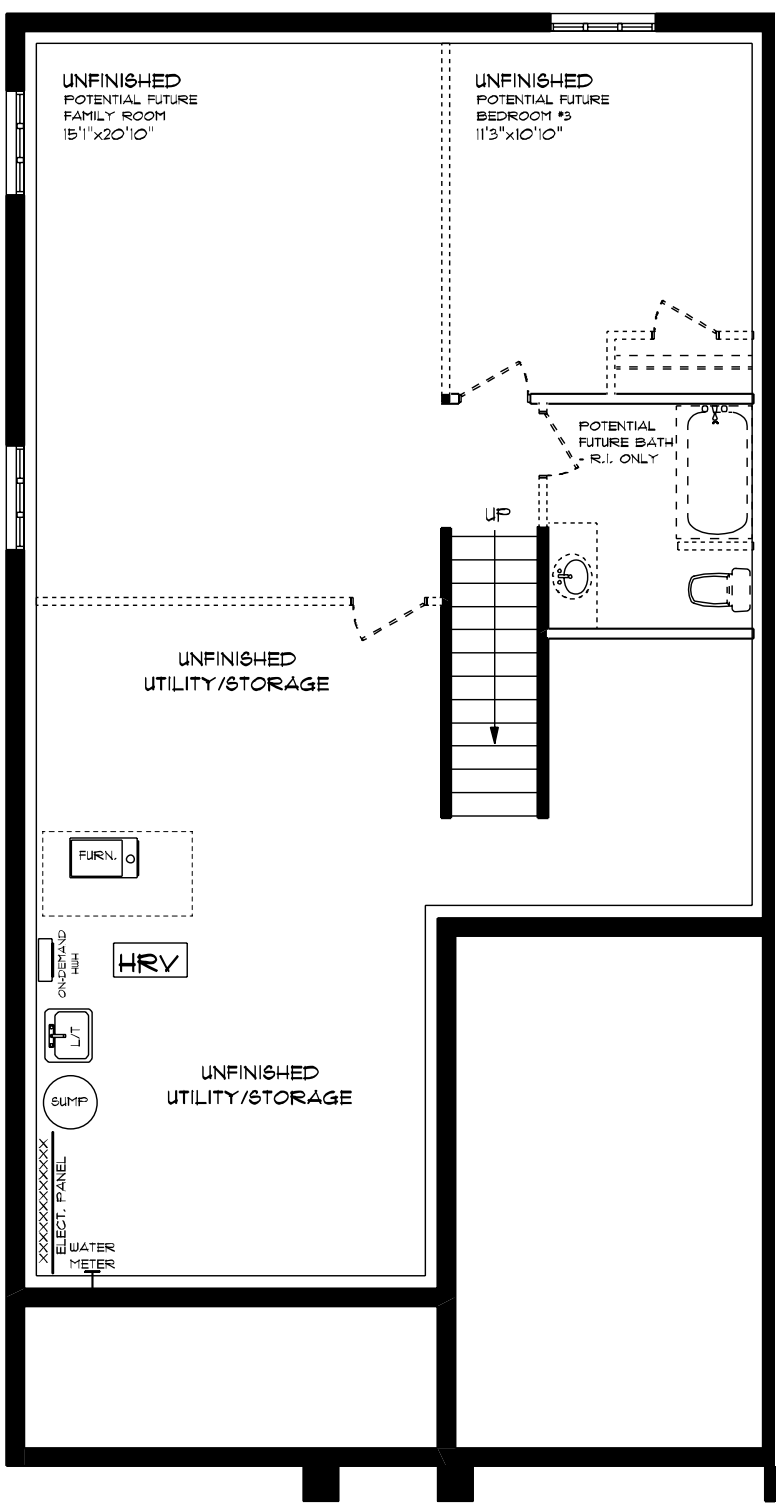
WILLOW RUN

22 HEMLOCK CRESCENT

LOWER LEVEL UNFINISHED

features

- AIR CONDITIONING
- GAS FURNACE WITH HRV
- HUMIDIFIER
- NEW HOME WARRANTY



WILLOW RUN

22 HEMLOCK CRESCENT

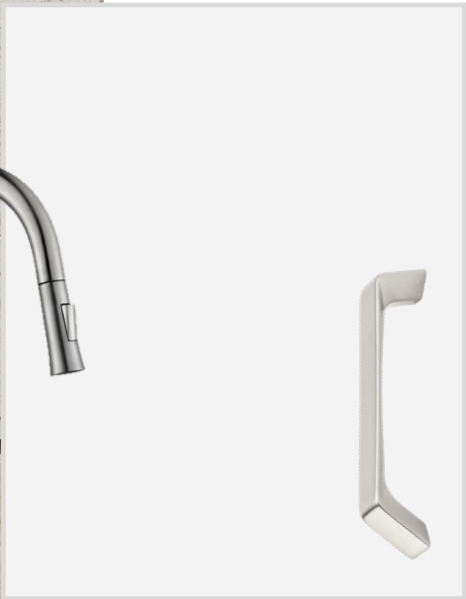
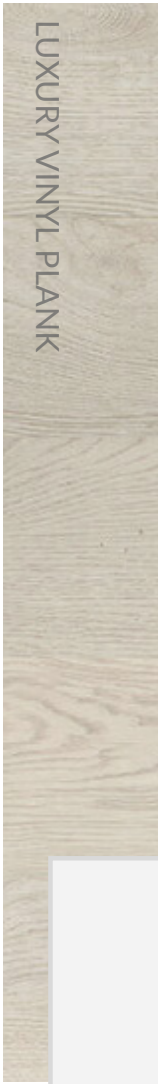
INTERIOR FINISHES



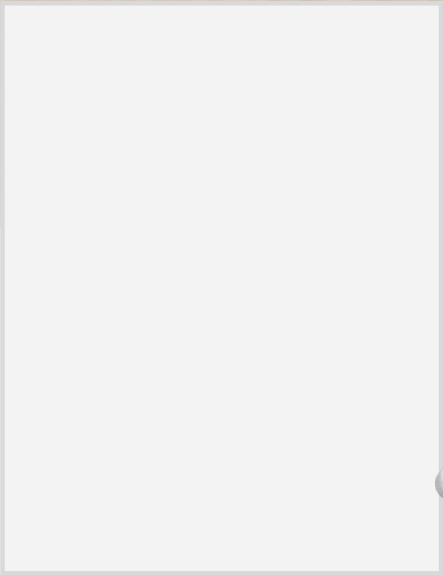
QUARTZ KITCHEN COUNTERTOPS



LUXURY VINYL PLANK



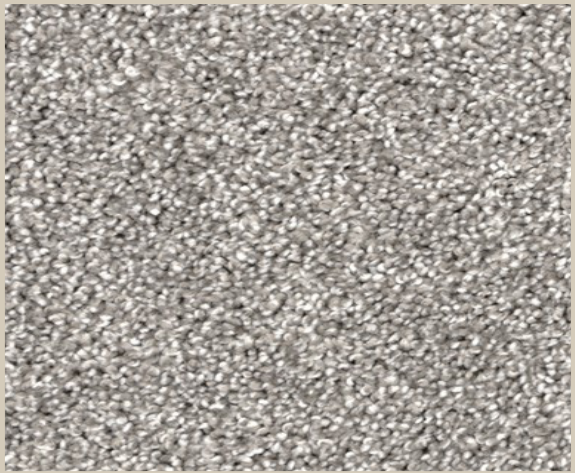
MELAMINE KITCHEN
CABINETRY



MELAMINE VANITY
CABINETRY



LAMINATE VANITY
COUNTERTOPS



CARPET