

# WILLOW RUN

6 HEMLOCK CRESCENT

AYLMER | ONTARIO

SEMI-DETACHED

PREMIUM  
SPECS



## THE DETAILS

PRICE	\$539,000
CLOSING DATE	Available Now
LOT NUMBER	45A
BEDROOMS	3
BATHS	3
GARAGE	1
DRIVEWAY	17'
SQ FT	1,831
MODEL	Semi-Detached

Emma Smith SALES PROFESSIONAL

519.409.1474 | emma.smith@hayhoehomes.com



# WILLOW RUN

## SITE PLAN

6 HEMLOCK CRESCENT | AYLMER ON



### exterior features

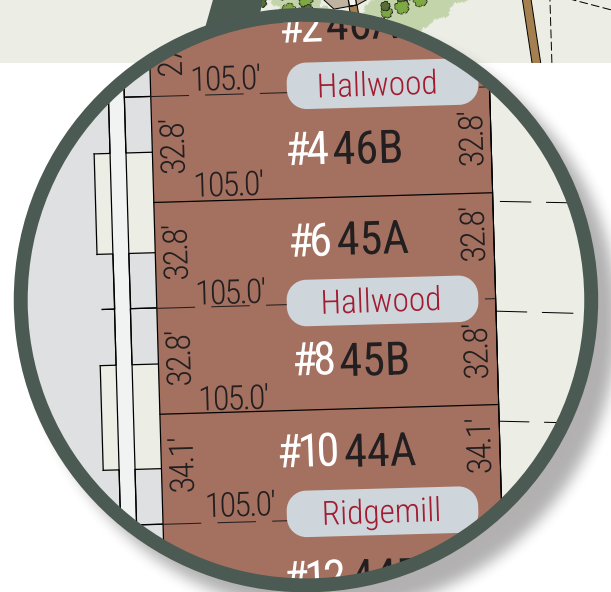
KEYLESS ENTRY

TREATED WOOD DECK

BBQ GAS LINE

ASPHALT DRIVEWAY

WALKING TRAILS



# WILLOW RUN

6 HEMLOCK CRESCENT

## MAIN FLOOR

1,225 sq ft

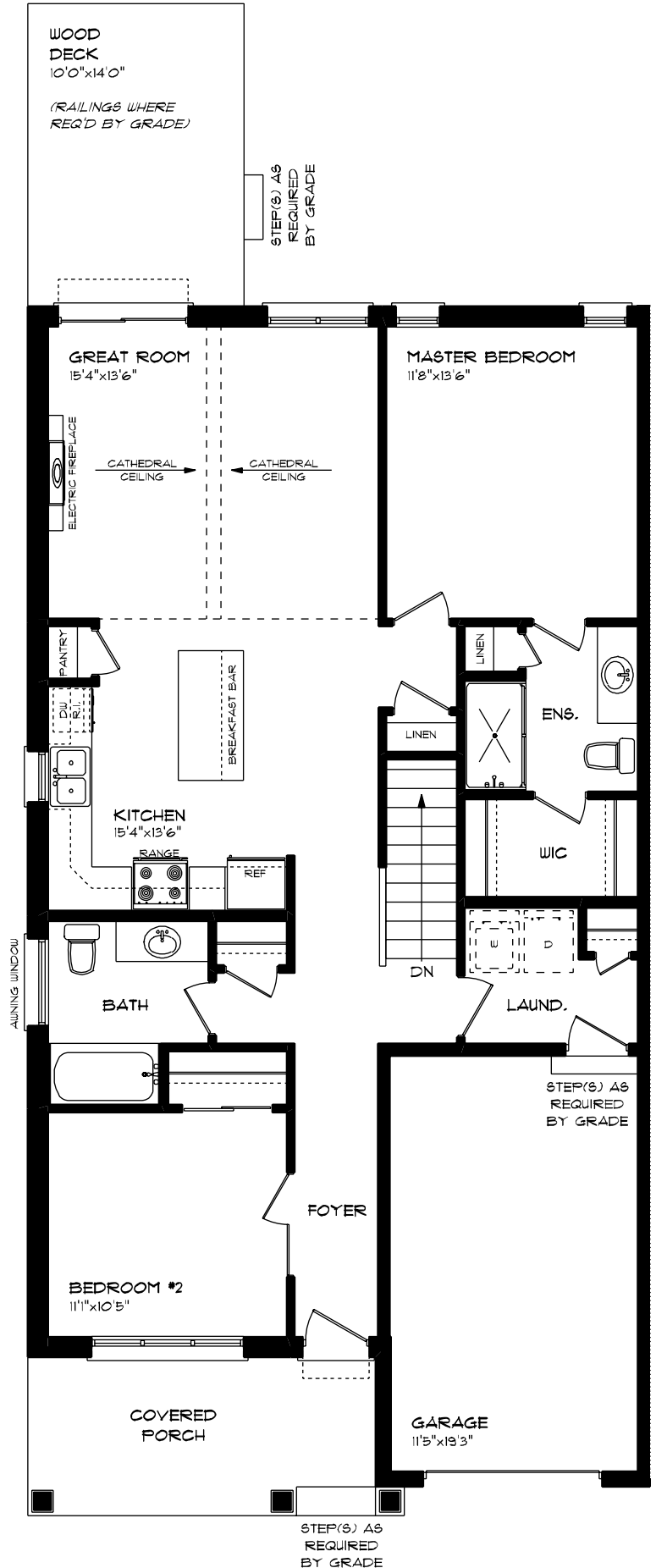
*features*

MAIN FLOOR LAUNDRY

QUARTZ COUNTERTOPS

KITCHEN BACKSPLASH

9' CEILINGS



# WILLOW RUN

6 HEMLOCK CRESCENT

## LOWER LEVEL

606 sq ft

### features

CARPET FLOORING

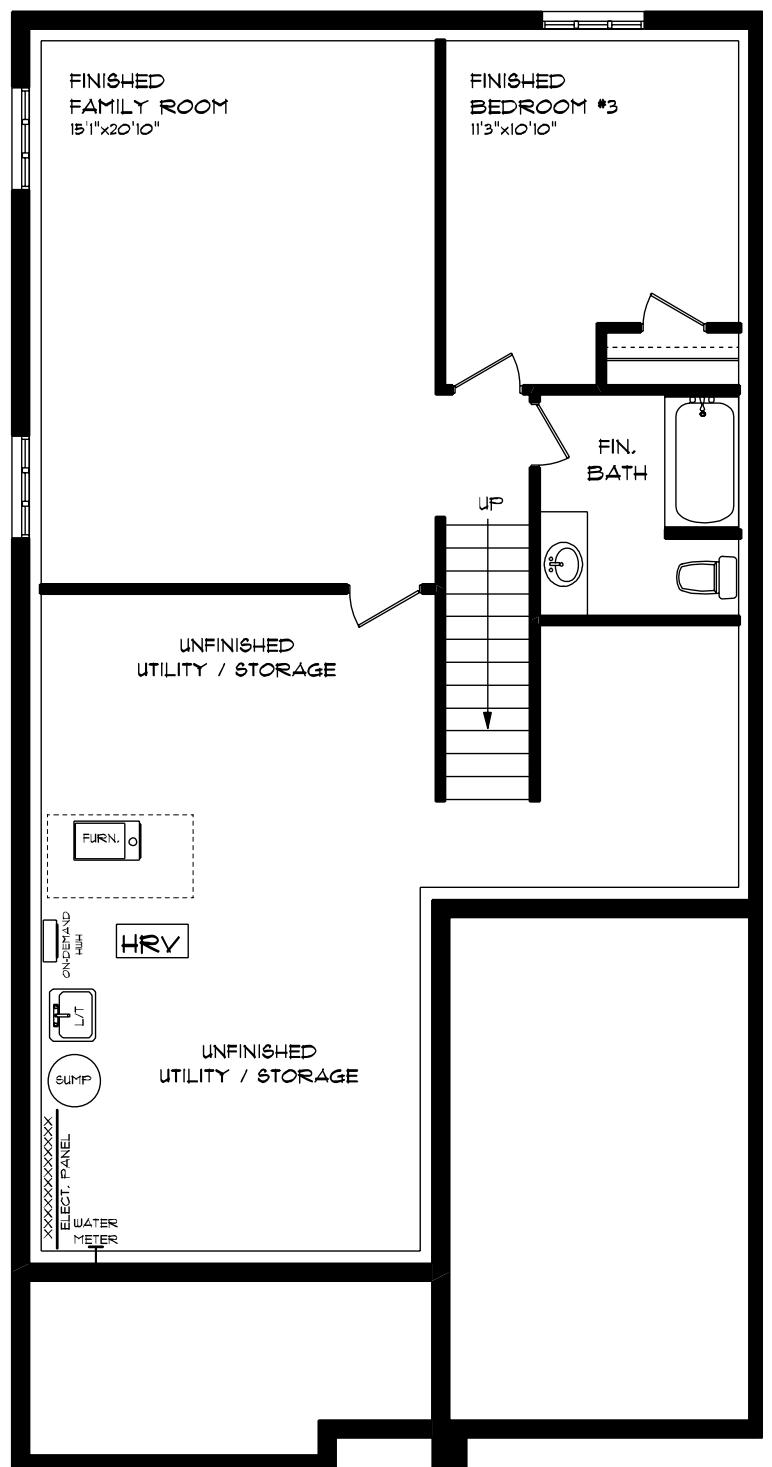
LVP FLOORING

AIR CONDITIONING

GAS FURNACE WITH HRV

HUMIDIFIER

NEW HOME WARRANTY



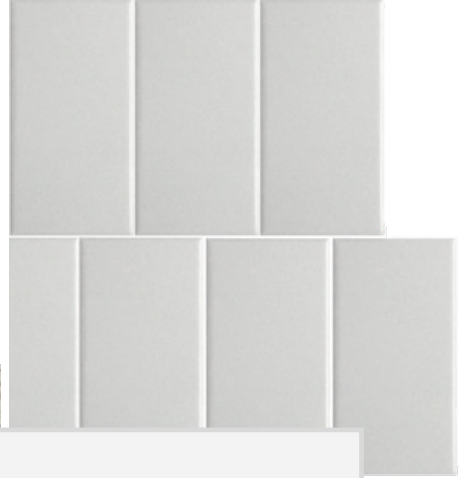
# WILLOW RUN

6 HEMLOCK CRESCENT



## INTERIOR FINISHES

KITCHEN BACKSPLASH



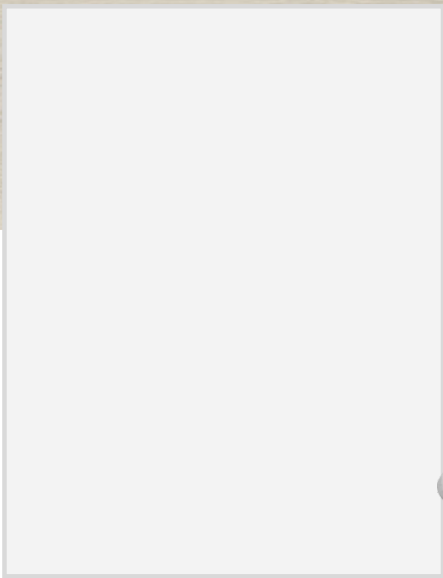
QUARTZ KITCHEN COUNTERTOPS



LUXURY VINYL PLANK



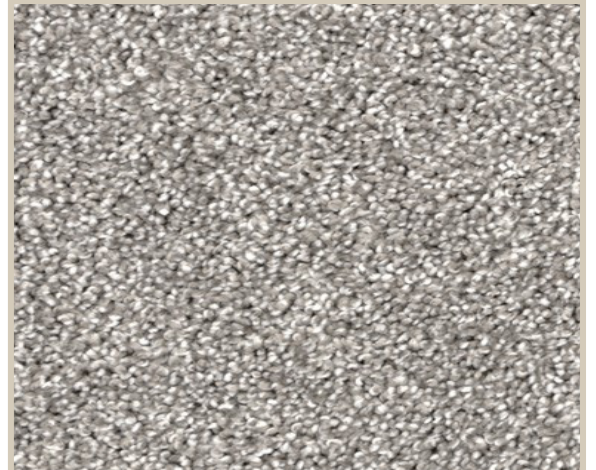
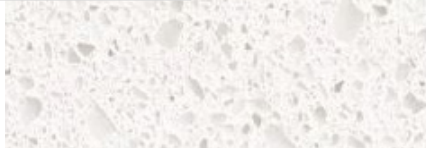
MELAMINE KITCHEN CABINETS



MELAMINE VANITY CABINETS



LAMINATE VANITY COUNTERTOPS



CARPET