

# WILLOW RUN

85 WILLOW DRIVE

AYLMER | ONTARIO

TOWNHOME



## THE DETAILS

PRICE	\$509,000
CLOSING DATE	Jun. 12, 2025
LOT NUMBER	4D
BEDROOMS	3
BATHS	2.5
GARAGE	1
DRIVEWAY	17'
SQ FT	1,824
MODEL	Townhome

**Emma Smith** SALES PROFESSIONAL

519.409.1474 | emma.smith@hayhoehomes.com



# WILLOW RUN

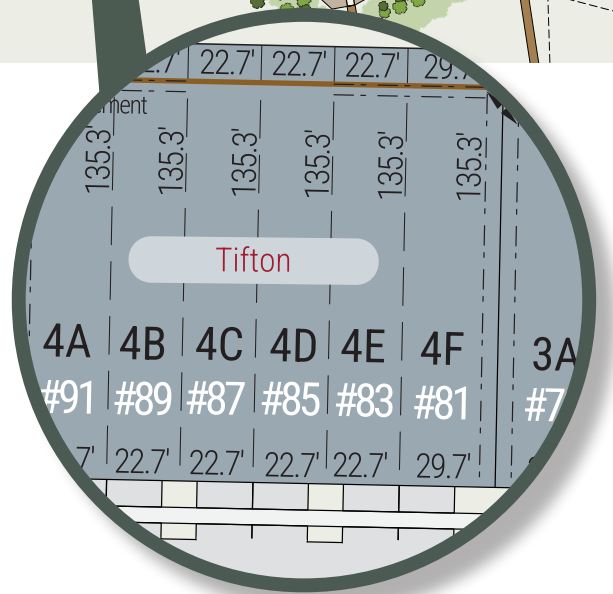
## SITE PLAN

85 WILLOW DRIVE | AYLMER ON



### exterior features

- KEYLESS ENTRY
- TREATED WOOD DECK
- ASPHALT DRIVEWAY
- WALKING TRAILS



# WILLOW RUN

85 WILLOW DRIVE

## MAIN FLOOR

836 sq ft

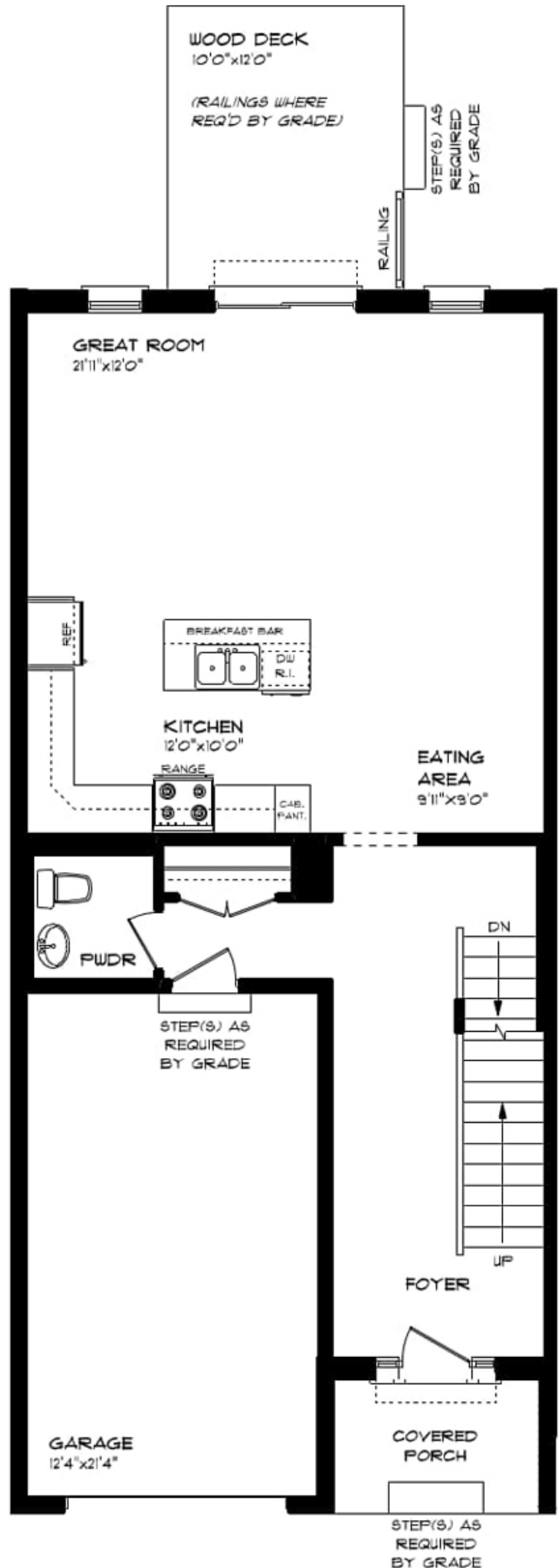
### *features*

VINYL PLANK FLOORING

QUARTZ COUNTERTOPS

KITCHEN ISLAND

9' CEILINGS



# WILLOW RUN

85 WILLOW DRIVE

## SECOND FLOOR

988 sq ft

### *features*

PROFESSIONALLY DESIGNED

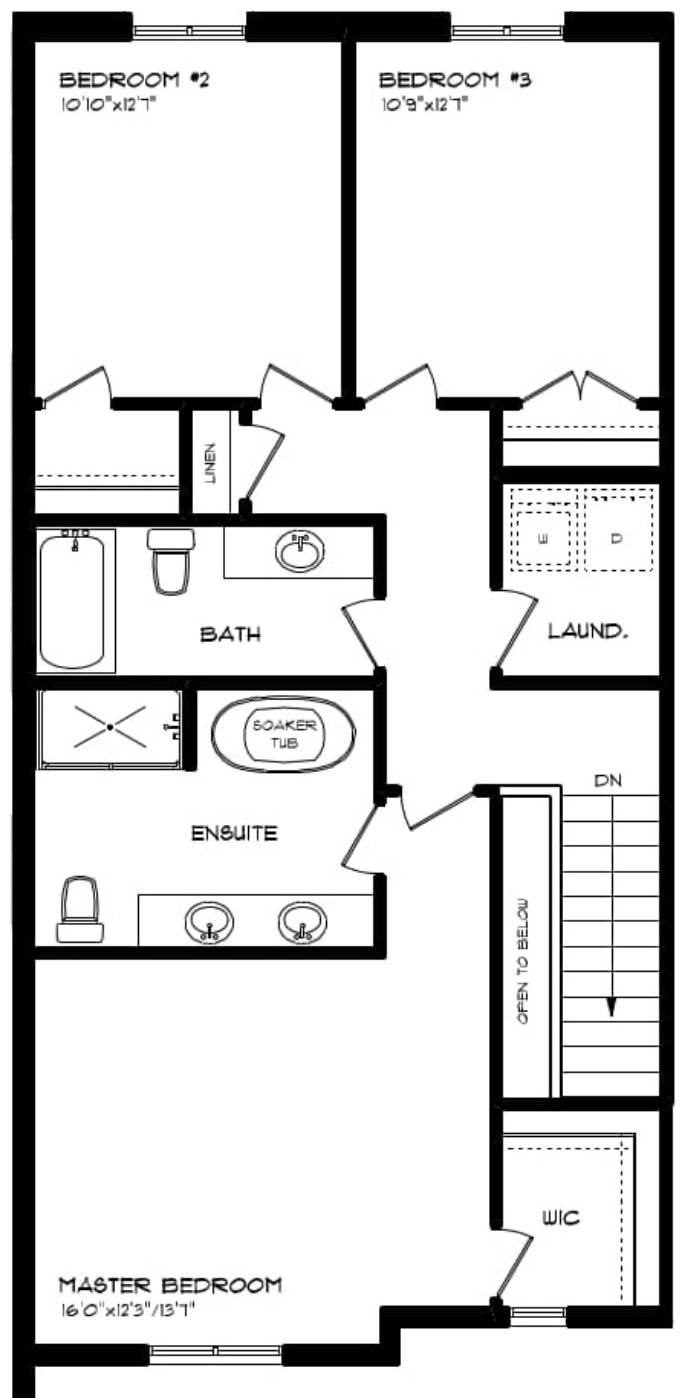
SOAKER TUB

CARPET FLOORING

VINYL PLANK FLOORING

WALK-IN CLOSET

DOUBLE ENSUITE VANITY



# WILLOW RUN

85 WILLOW DRIVE

## LOWER LEVEL UNFINISHED

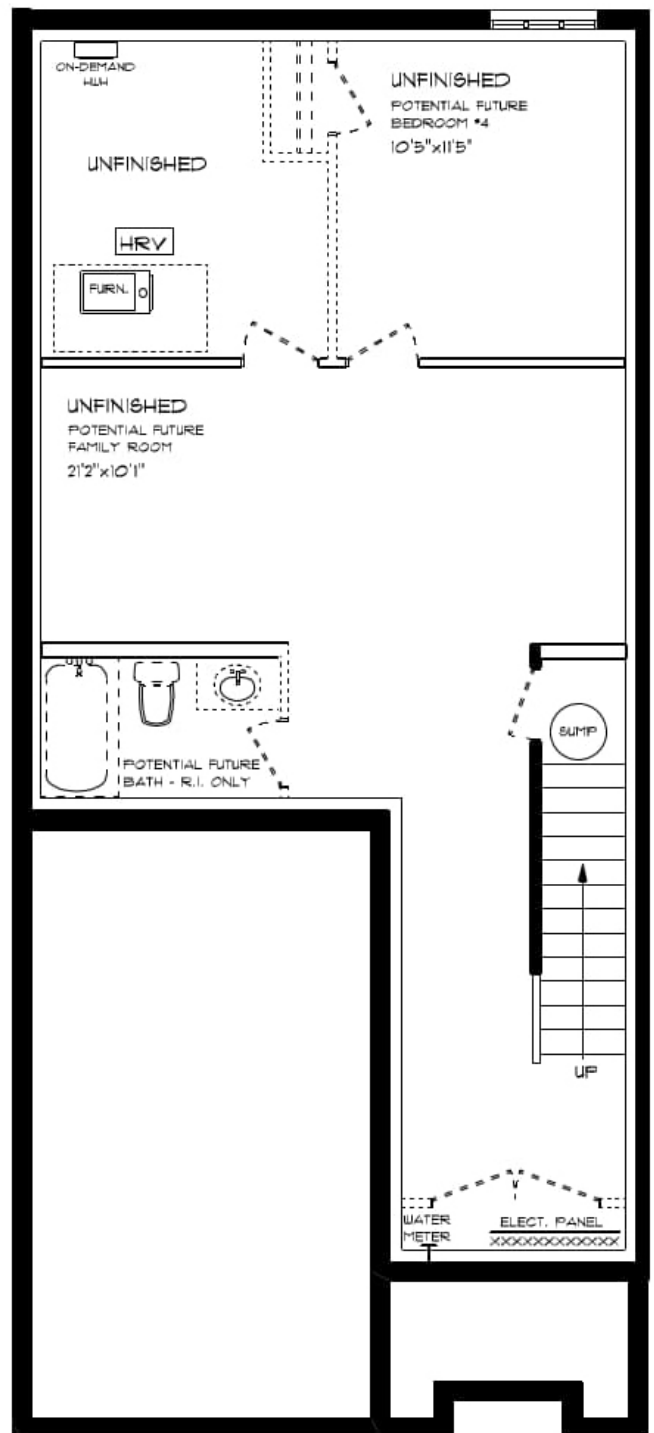
### *features*

AIR CONDITIONING

GAS FURNACE WITH HRV

HUMIDIFIER

NEW HOME WARRANTY



# WILLOW RUN

85 WILLOW DRIVE

## INTERIOR FINISHES

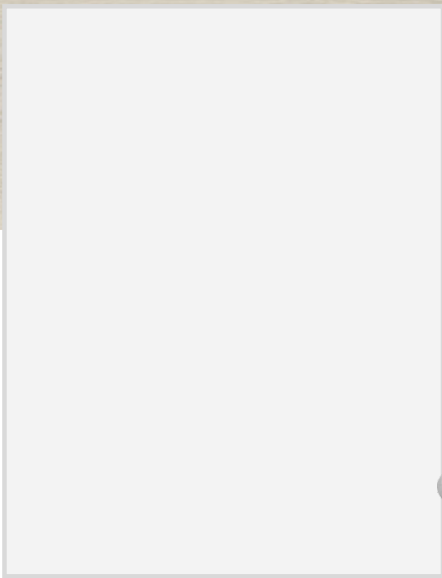


QUARTZ KITCHEN COUNTERTOPS

LUXURY VINYL PLANK



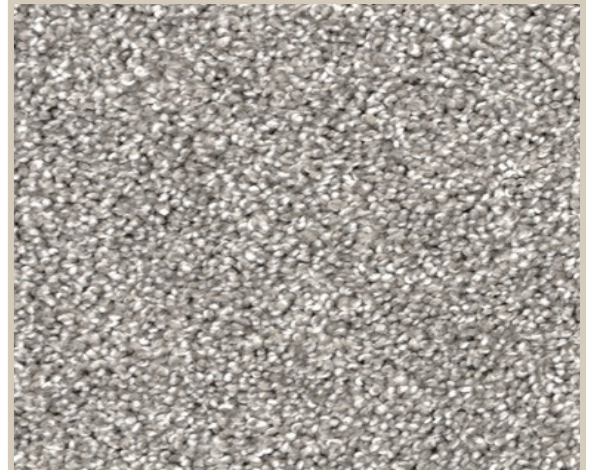
MELAMINE KITCHEN CABINETS



MELAMINE VANITY CABINETS



LAMINATE VANITY COUNTERTOPS



CARPET