

# WILLOW RUN

## 29 HEMLOCK CRES

AYLMER | ONTARIO

INVENTORY HOME



## THE DETAILS

PRICE	\$721,000
CLOSING DATE	Available Now
LOT NUMBER	51
BEDROOMS	4
BATHS	2.5
GARAGE	2
DRIVEWAY	18'
SQ FT	1,923
MODEL	Vermont

**Emma Smith** SALES PROFESSIONAL

519.409.1474 | emma.smith@hayhoehomes.com



[WWW.HAYHOEHOMES.COM](http://www.hayhoehomes.com)

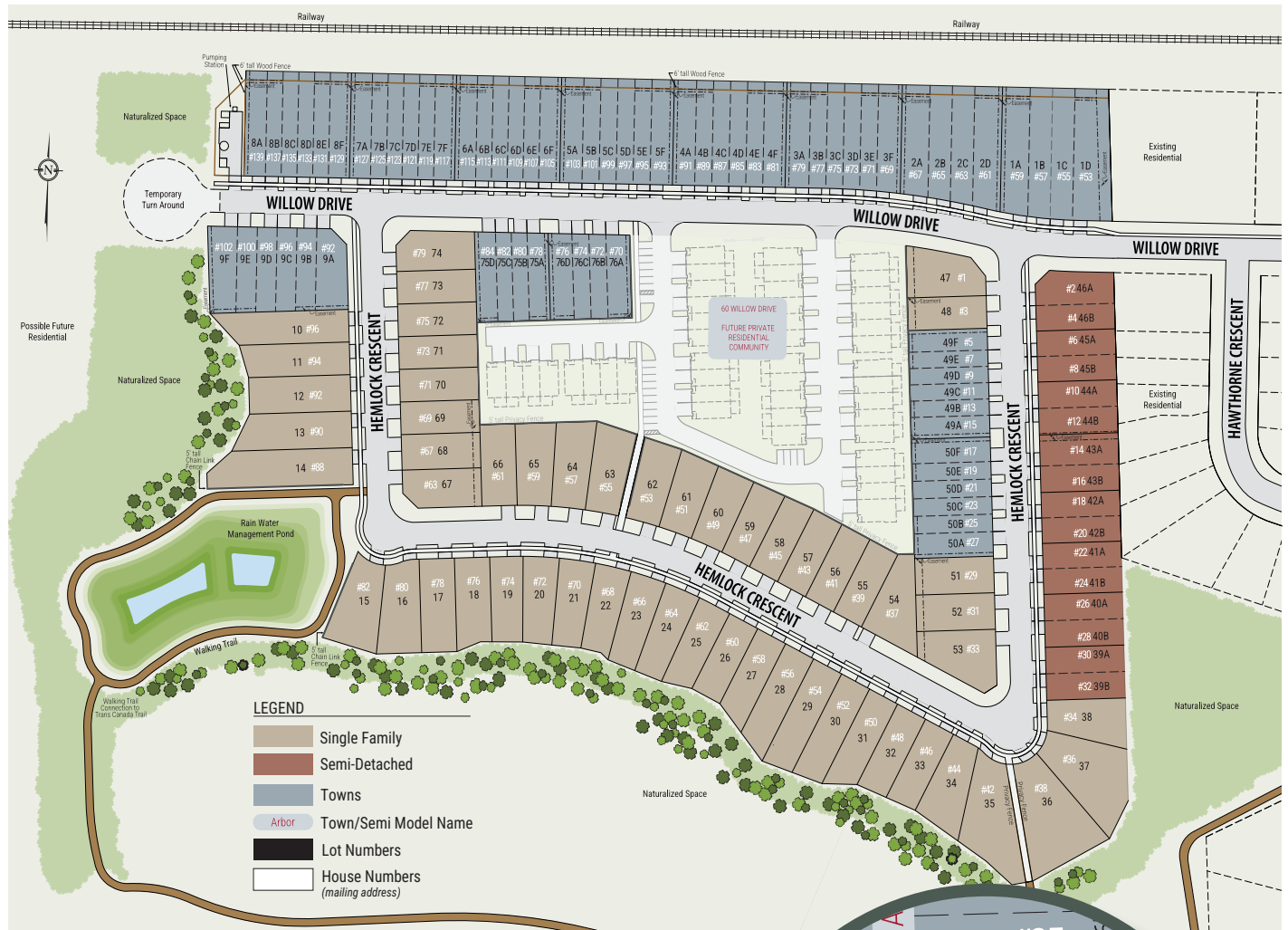
Price, products, colours & features are subject to change without notice. E. & O. E. DATE MAY 1, 2025

**HAYHOE**<sup>TM</sup>  
— HOMES —

# WILLOW RUN

## SITE PLAN

29 HEMLOCK CRES | AYLMER ON



### exterior features

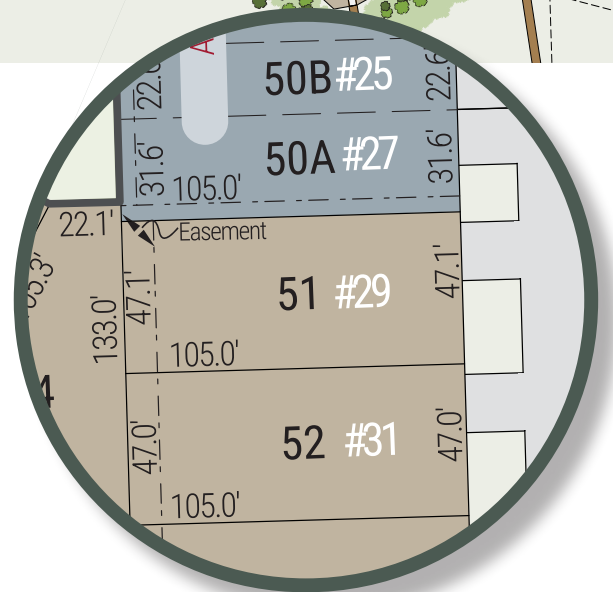
KEYLESS ENTRY

TREATED WOOD DECK

BBQ GAS LINE

ASPHALT DRIVEWAY

WALKING TRAILS



# WILLOW RUN

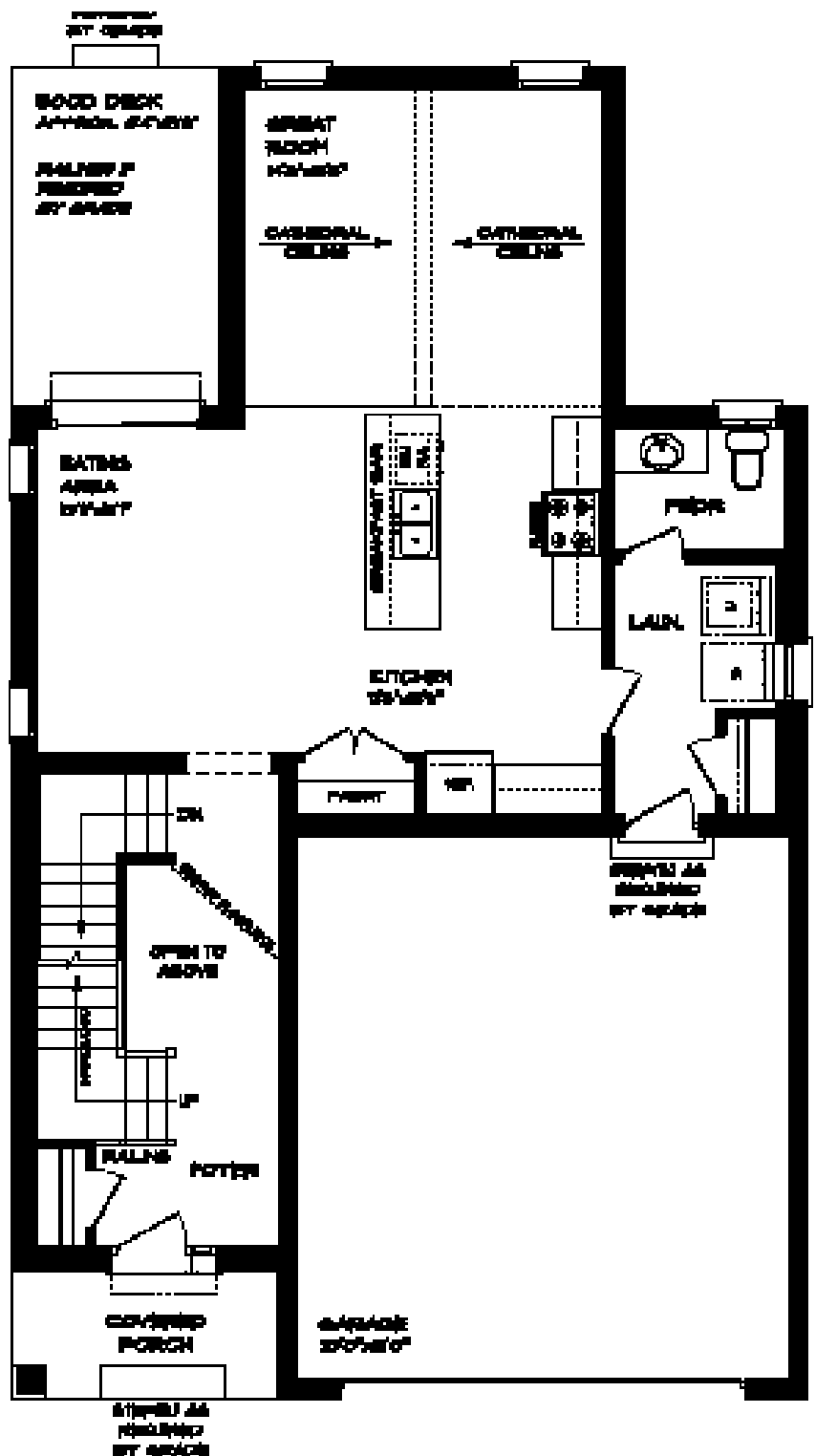
29 HEMLOCK CRES

## MAIN FLOOR

978 sq ft

### features

- MAIN FLOOR LAUNDRY
- QUARTZ COUNTERTOPS
- KITCHEN BACKSPLASH
- DOUBLE CAR GARAGE
- KITCHEN PANTRY
- TWO STOREY FOYER



# WILLOW RUN

29 HEMLOCK CRES

## SECOND FLOOR

945 sq ft

### features

PROFESSIONALLY DESIGNED

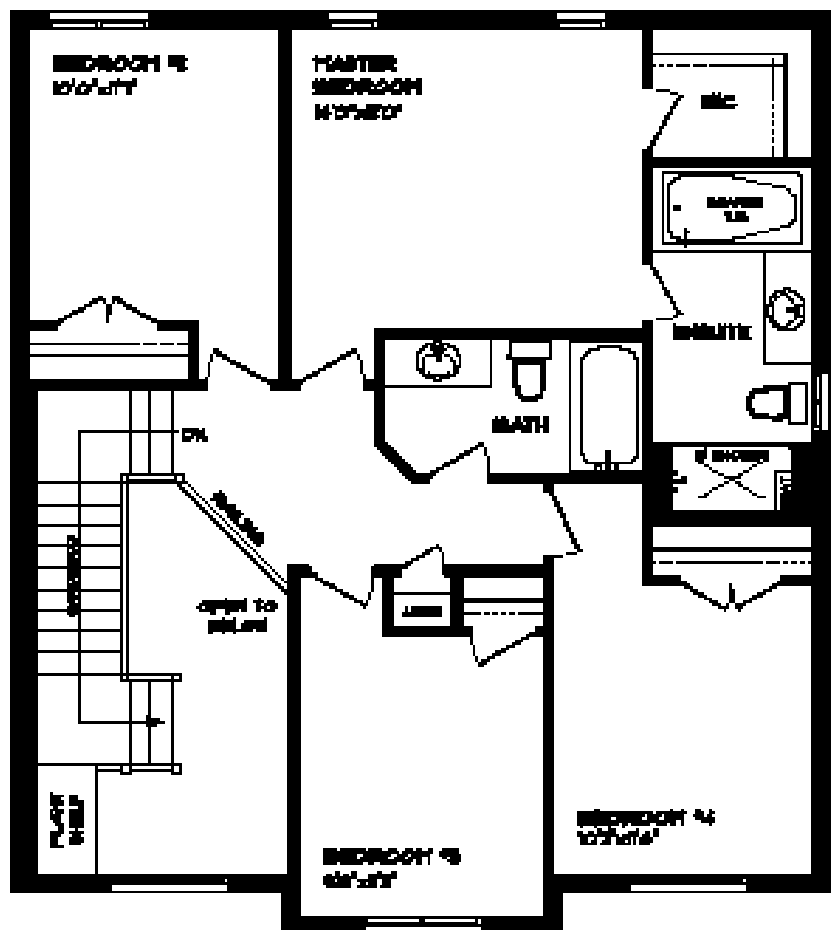
SOAKER TUB

CARPET FLOORING

CERAMIC TILE FLOORING

WALK-IN CLOSET

HARDWOOD STAIRS



# WILLOW RUN

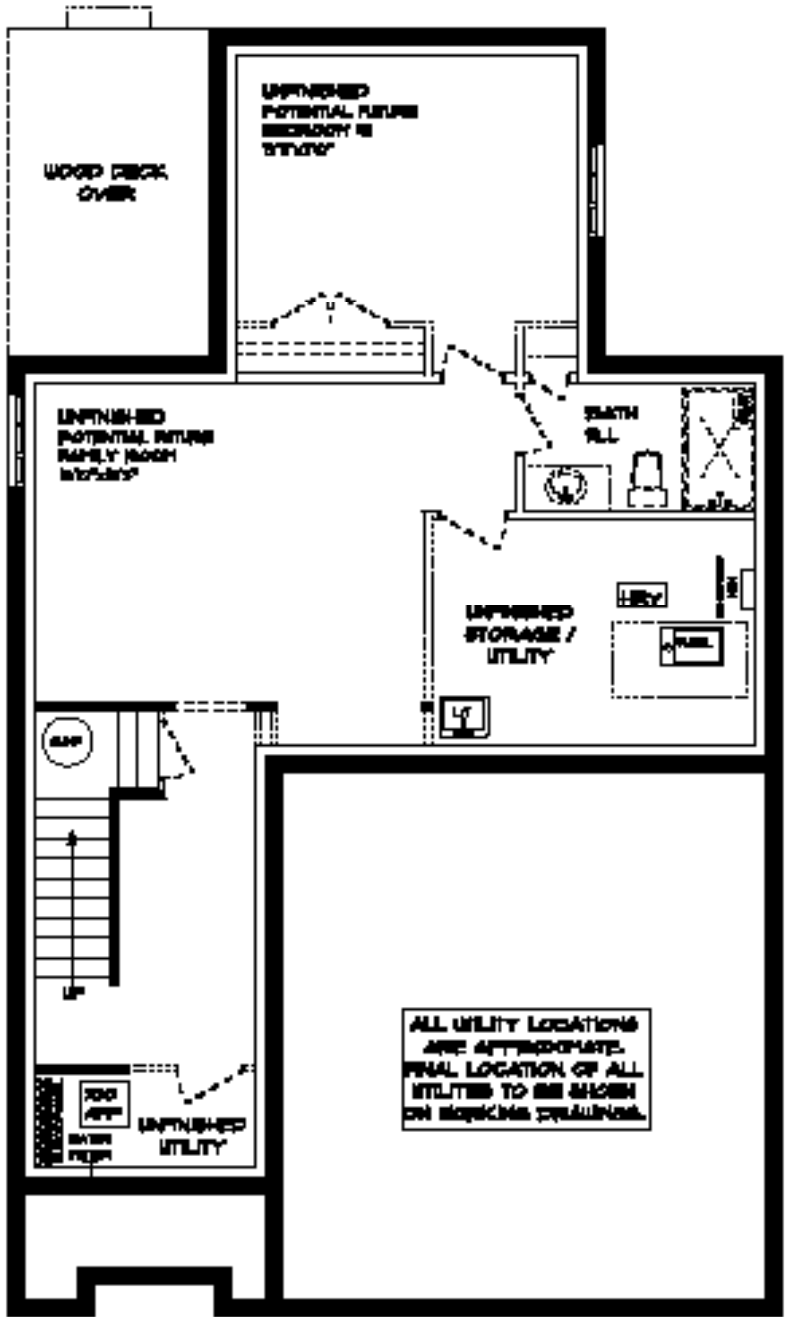
29 HEMLOCK CRES

## LOWER LEVEL

Unfinished

### features

- AIR CONDITIONING
- GAS FURNACE WITH HRV
- HUMIDIFIER
- LAUNDRY TUB
- NEW HOME WARRANTY





WILLOW  
RUN

29 HEMLOCK CRES

EXTERIOR FINISHES

SHINGLES



SIDING

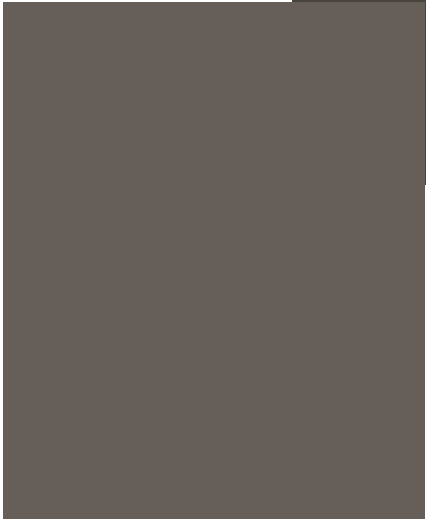


SIDING



BRICK

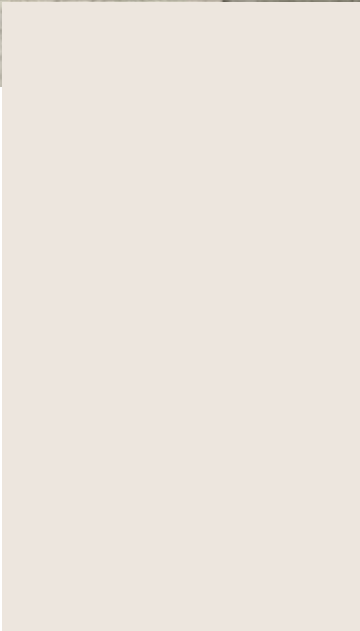
WINDOWS



GARAGE DOOR



FRONT DOOR



ALUMINUM

# WILLOW RUN

29 HEMLOCK CRES

## INTERIOR FINISHES

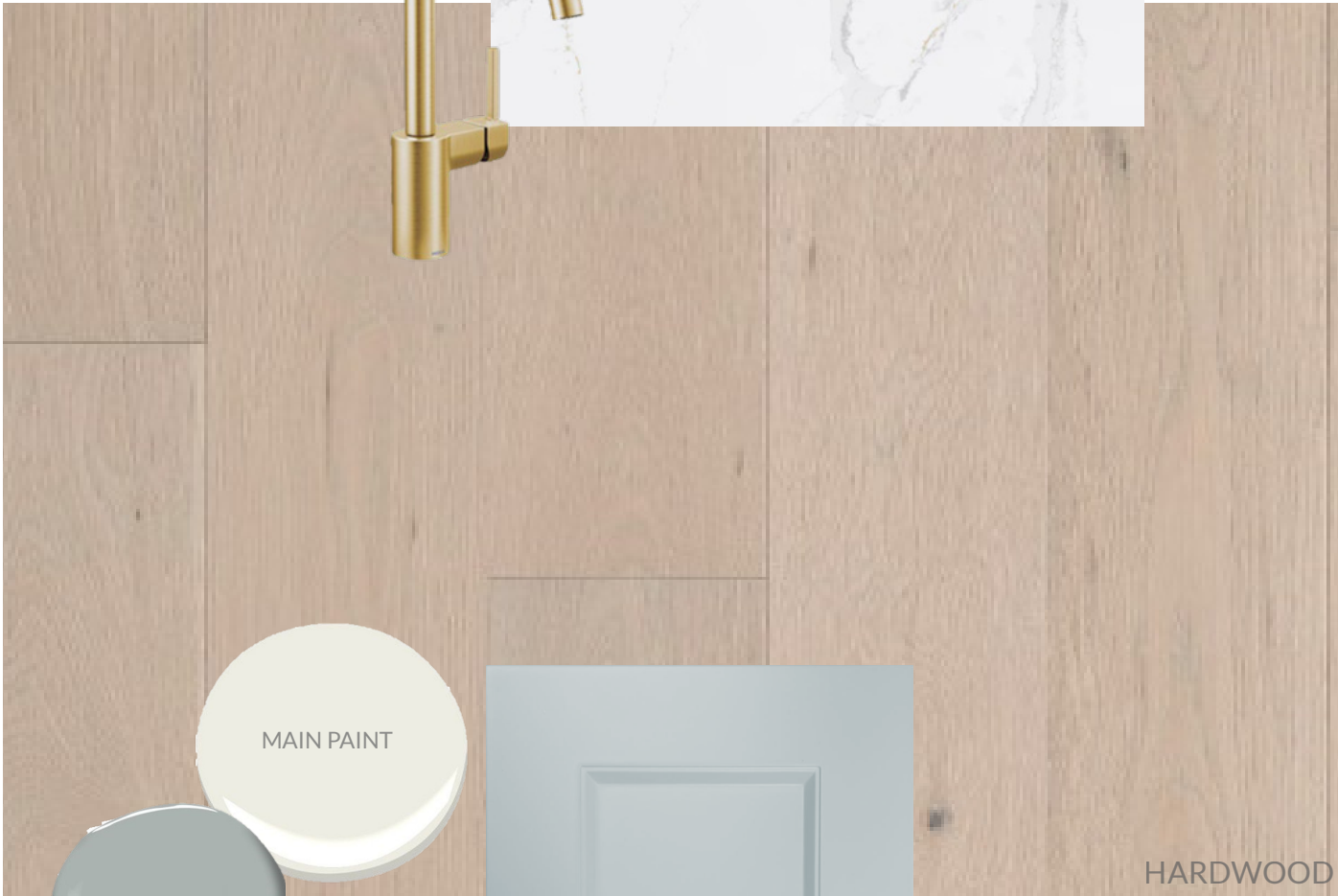
KITCHEN BACKSPLASH



PERIMETER QUARTZ  
KITCHEN COUNTERTOPS



ISLAND QUARTZ  
KITCHEN COUNTERTOPS



HARDWOOD

MAIN PAINT



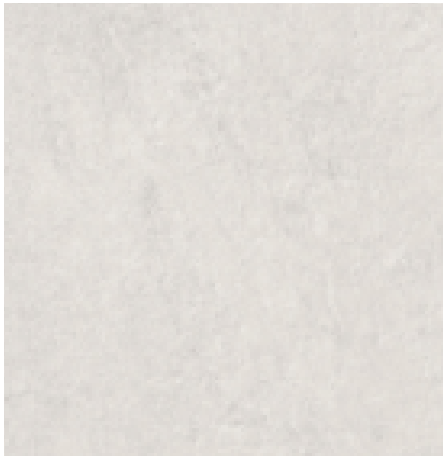
POWDER PAINT



PAINTED KITCHEN LOWERS



PAINTED KITCHEN UPPERS



MAIN FLOOR TILE



# WILLOW RUN

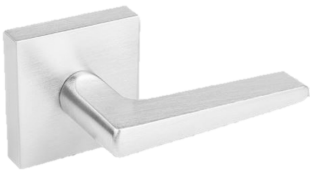
29 HEMLOCK CRES

## INTERIOR FINISHES

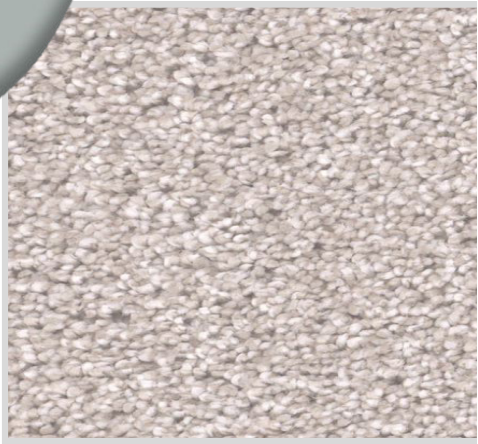
INTERIOR DOOR STYLE



MASTER BEDRM PAINT



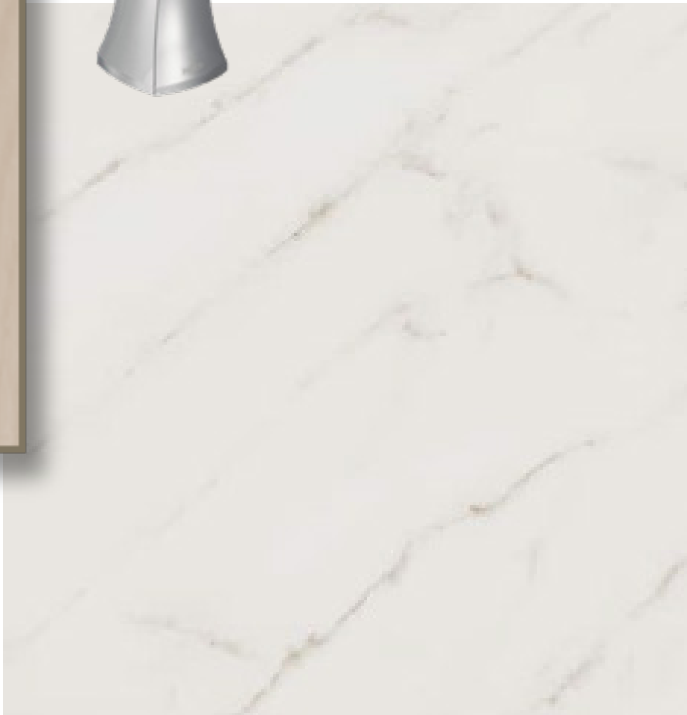
CARPET



VANITY LAMINATE COUNTERTOP



STAINED VANITY CABINETRY



ENSUITE & MAIN BATH TILE