

ROLLING MEADOWS

TOWNHOME

38 Finch Street | Tillsonburg ON

ESSENTIAL
SPECS



THE DETAILS

PRICE \$564,000

CLOSING DATE June 23, 2026

LOT NUMBER 37B

BEDROOMS 4

BATHS 2.5

GARAGE 2

DRIVEWAY 17'

SQ FT 1,812

MODEL Clifton

Laura Babcock SALES PROFESSIONAL

519.520.0539 | laura.babcock@hayhoehomes.com



WWW.HAYHOEHOMES.COM

Price, products, colours & features are subject to change without notice. E. & O. E. SEPTEMBER 17, 2025

HAYHOETM
HOMES

ROLLING MEADOWS

SITE PLAN

38 Finch Street | Tillsonburg ON



exterior features

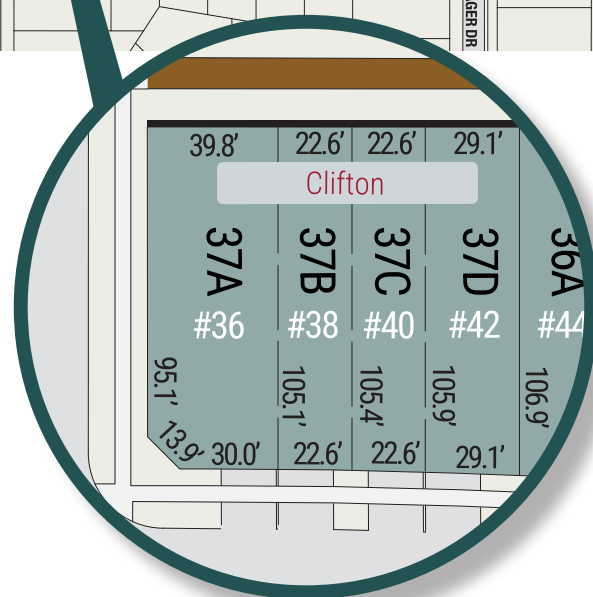
KEYLESS ENTRY

TREATED WOOD DECK

BBQ GAS LINE

ASPHALT DRIVEWAY

WALKING TRAILS



ROLLING MEADOWS

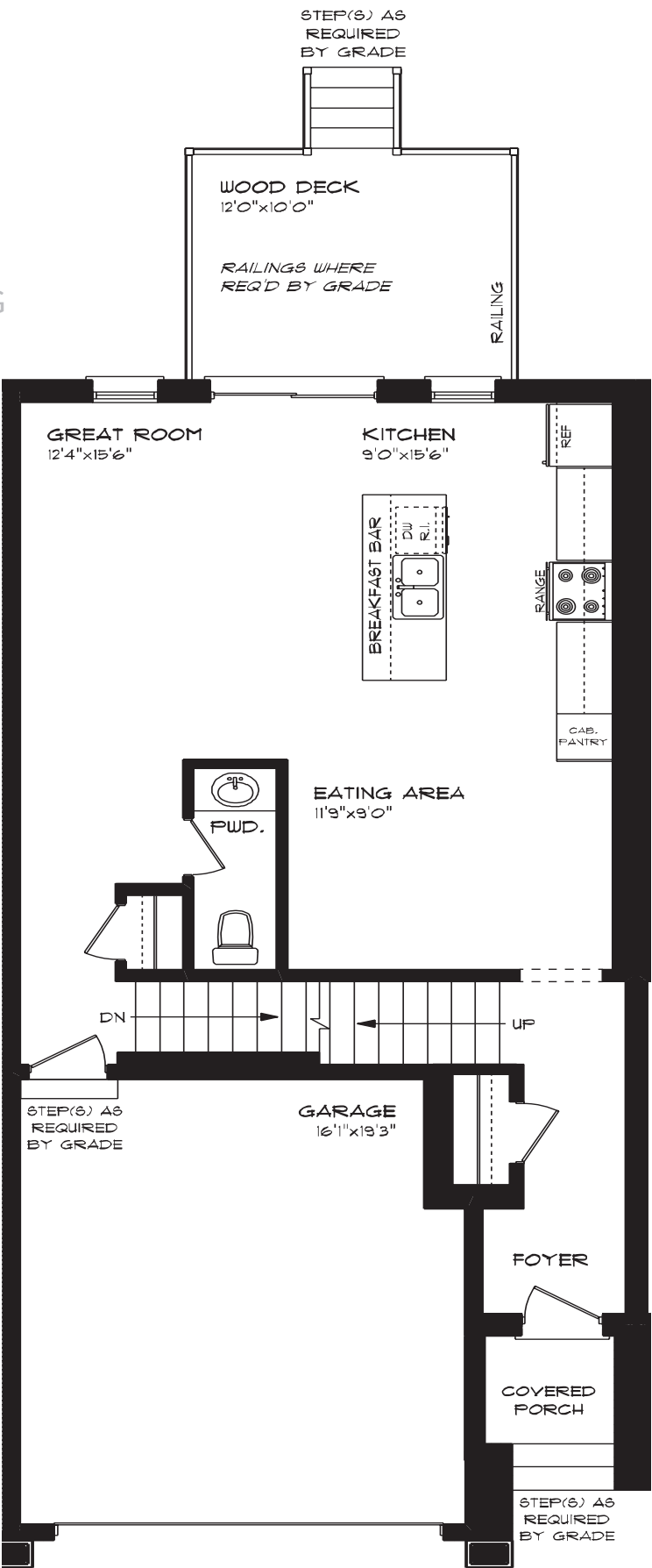
38 Finch Street | Tillsonburg ON

MAIN FLOOR

757 sq ft

features

- QUARTZ COUNTERTOPS
- LUXURY VINYL PLANK FLOORING
- KITCHEN ISLAND
- 8' MAIN FLOOR CEILING
- DOUBLE CAR GARAGE
- KITCHEN PANTRY



ROLLING MEADOWS

38 Finch Street | Tillsonburg ON

SECOND FLOOR

1,055 sq ft

features

PROFESSIONALLY DESIGNED

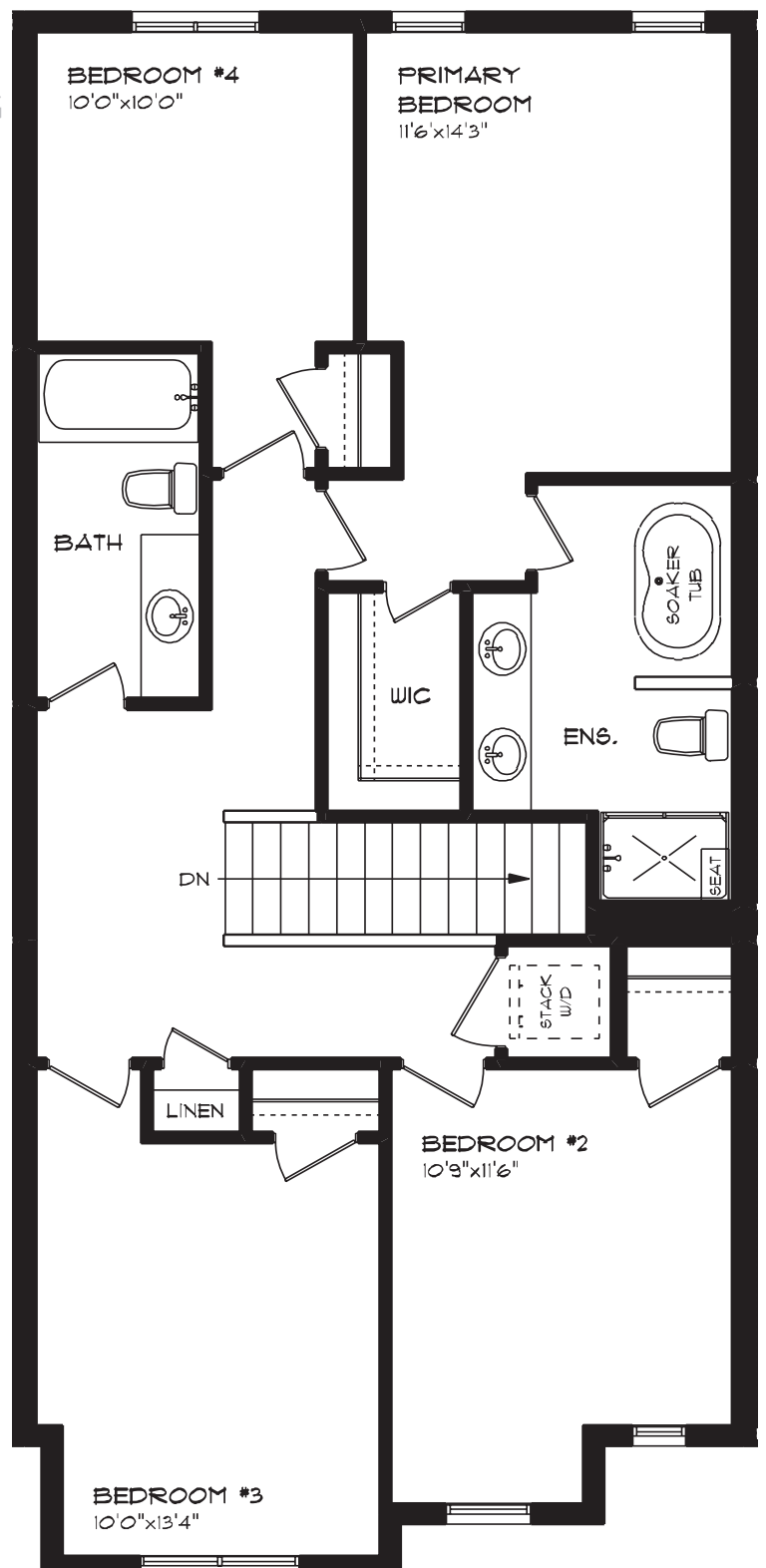
LUXURY VINYL PLANK FLOORING

CARPET FLOORING

ENSUITE BATH

SECOND FLOOR LAUNDRY

WALK-IN CLOSET



ROLLING MEADOWS

38 Finch Street | Tillsonburg ON

LOWER LEVEL

Unfinished

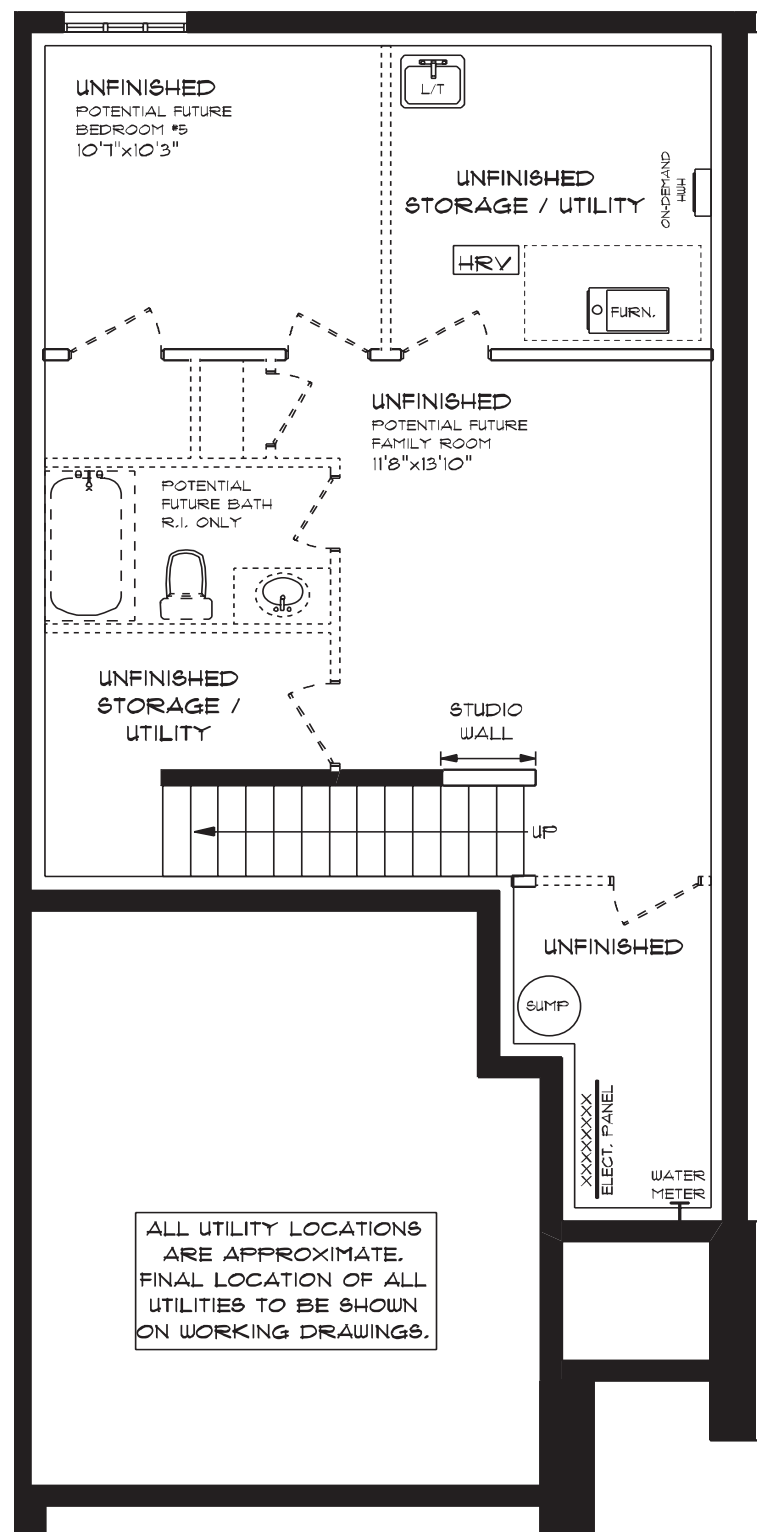
features

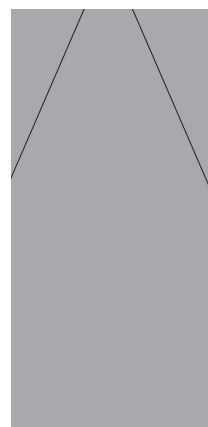
AIR CONDITIONING

GAS FURNACE WITH HRV

HUMIDIFIER

NEW HOME WARRANTY

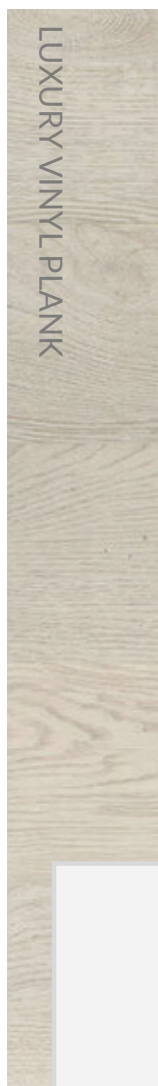




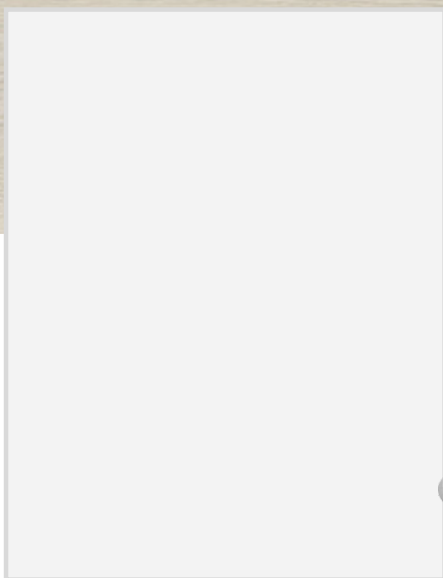
QUARTZ KITCHEN COUNTERTOPS



LUXURY VINYL PLANK



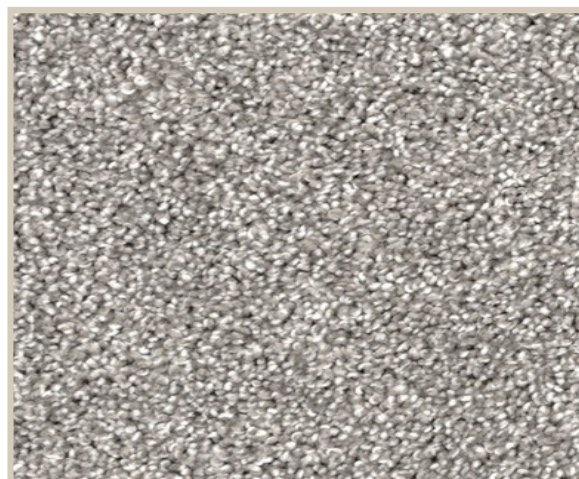
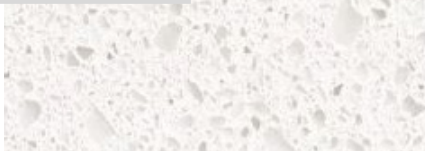
MELAMINE KITCHEN CABINETS



MELAMINE VANITY CABINETS



LAMINATE VANITY COUNTERTOPS



CARPET