

ROLLING MEADOWS

TOWNHOME

46 Finch Street | Tillsonburg ON

PREMIUM
SPECS



THE DETAILS

PRICE	\$574,000
CLOSING DATE	August 18, 2026
LOT NUMBER	36B
BEDROOMS	4
BATHS	3.5
GARAGE	1
DRIVEWAY	12' 4"
SQ FT	2,443
MODEL	Tifton

Laura Babcock SALES PROFESSIONAL

519.520.0539 | laura.babcock@hayhoehomes.com



WWW.HAYHOEHOMES.COM

Price, products, colours & features are subject to change without notice. E. & O. E. OCTOBER 7, 2025

HAYHOETM
HOMES

ROLLING MEADOWS

SITE PLAN

46 Finch Street | Tillsonburg ON



exterior features

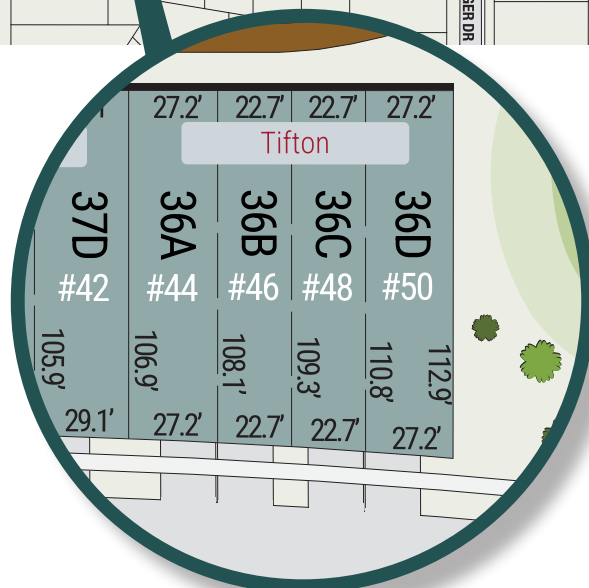
KEYLESS ENTRY

TREATED WOOD DECK

BBQ GAS LINE

ASPHALT DRIVEWAY

WALKING TRAILS



ROLLING MEADOWS

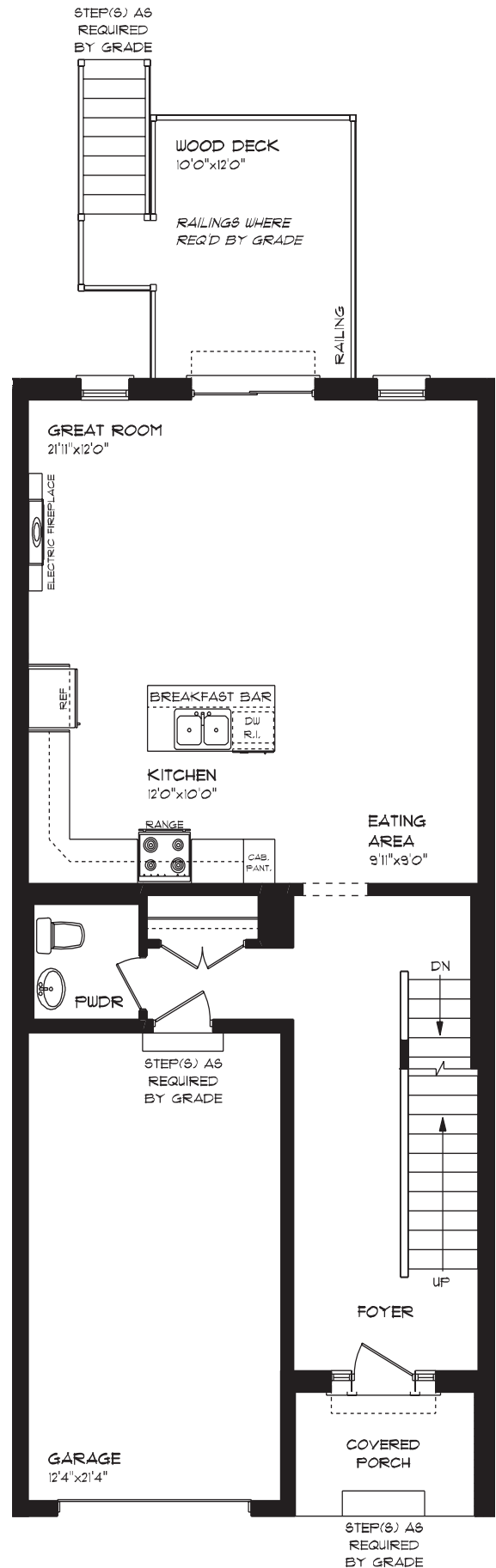
46 Finch Street | Tillsonburg ON

MAIN FLOOR

836 sq ft

features

- QUARTZ COUNTERTOPS
- KITCHEN BACKSPLASH
- LUXURY VINYL PLANK FLOORING
- KITCHEN ISLAND
- 9' MAIN FLOOR CEILING
- SINGLE CAR GARAGE
- KITCHEN PANTRY



ROLLING MEADOWS

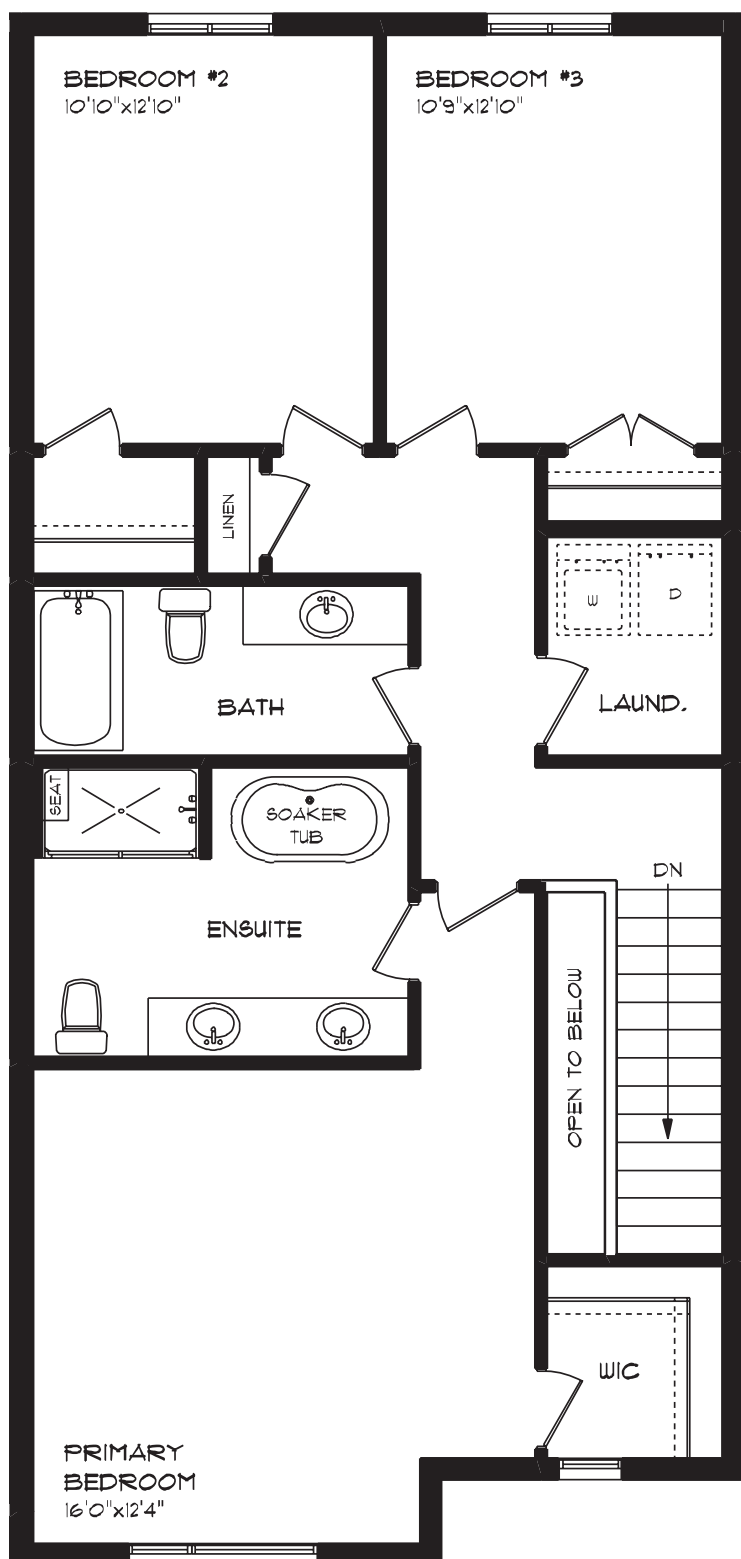
46 Finch Street | Tillsonburg ON

SECOND FLOOR

1,006 sq ft

features

- PROFESSIONALLY DESIGNED
- LUXURY VINYL PLANK FLOORING
- CARPET FLOORING
- SECOND FLOOR LAUNDRY
- ENSUITE BATH
- WALK-IN CLOSET



ROLLING MEADOWS

46 Finch Street | Tillsonburg ON

LOWER LEVEL

601 sq ft

features

FINISHED FAMILY ROOM

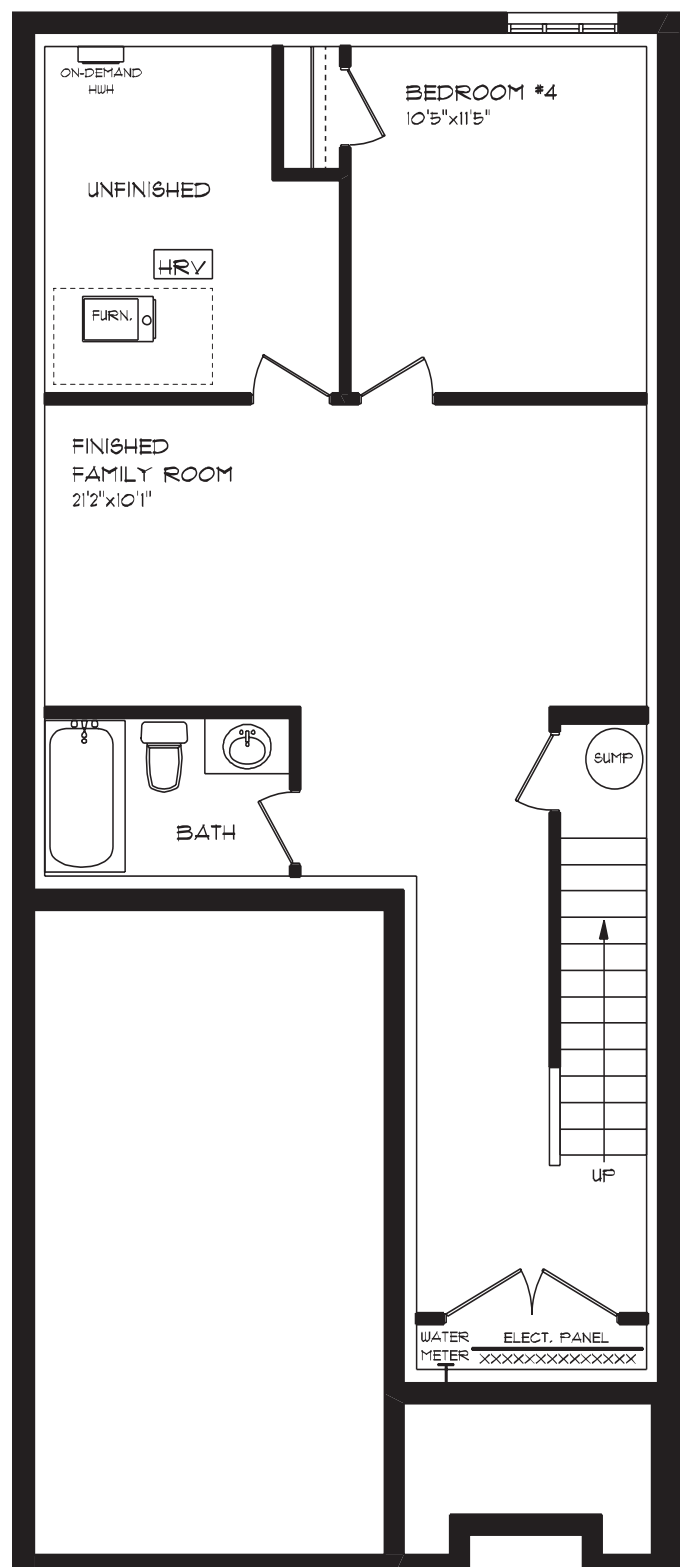
FINISHED BEDROOM #4

AIR CONDITIONING

GAS FURNACE WITH HRV

HUMIDIFIER

NEW HOME WARRANTY



ROLLING MEADOWS

46 Finch Street | Tillsonburg ON

INTERIOR FINISHES



KITCHEN BACKSPLASH



QUARTZ KITCHEN COUNTERTOPS



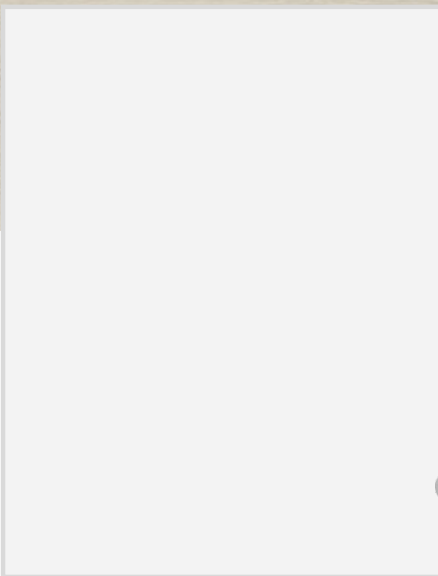
LUXURY VINYL PLANK



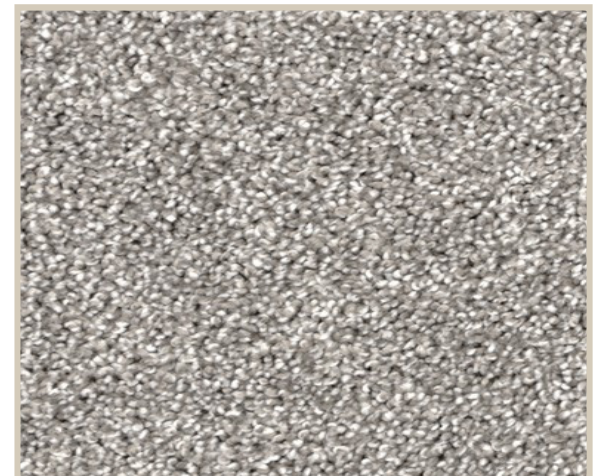
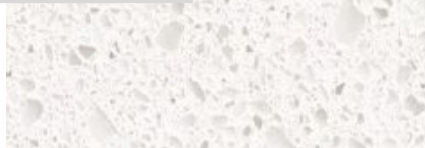
MELAMINE KITCHEN CABINETY



MELAMINE VANITY CABINETY



LAMINATE VANITY COUNTERTOPS



CARPET