

# INVENTORY HOME



**254 RENAISSANCE DR.**

ORCHARD PARK MEADOWS, ST. THOMAS

## THE DETAILS

PRICE	\$ 769,000
CLOSING DATE	AVAILABLE NOW
LOT NUMBER	59
BEDROOMS	3
BATHS	3
SQFT	1868
GARAGE	2
MODEL	BRECKWELL

**HAYHOE™**  
—HOMES—



**SALES PROFESSIONAL**

DAVE MATTHEWS

519.633.9215

dave.matthews@hayhoehomes.com

# SITE PLAN

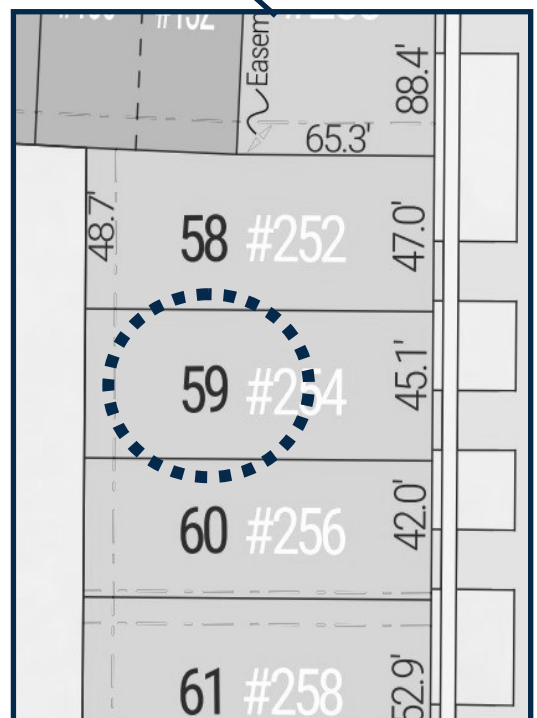


## 254 RENAISSANCE DR.

### EXTERIOR FEATURES:

- KEYLESS ENTRY
- TREATED WOOD DECK
- BBQ GAS LINE
- ASPHALT DRIVEWAY
- WALKING TRAILS

**HAYHOE™**  
HOMES



# MAIN FLOOR

254 RENAISSANCE DR., ST. THOMAS



LUXURY VINYL PLANK FLOORING

CUSTOM CABINETS

QUARTZ COUNTERTOPS

KITCHEN BACKSPLASH

WALK-IN CLOSET

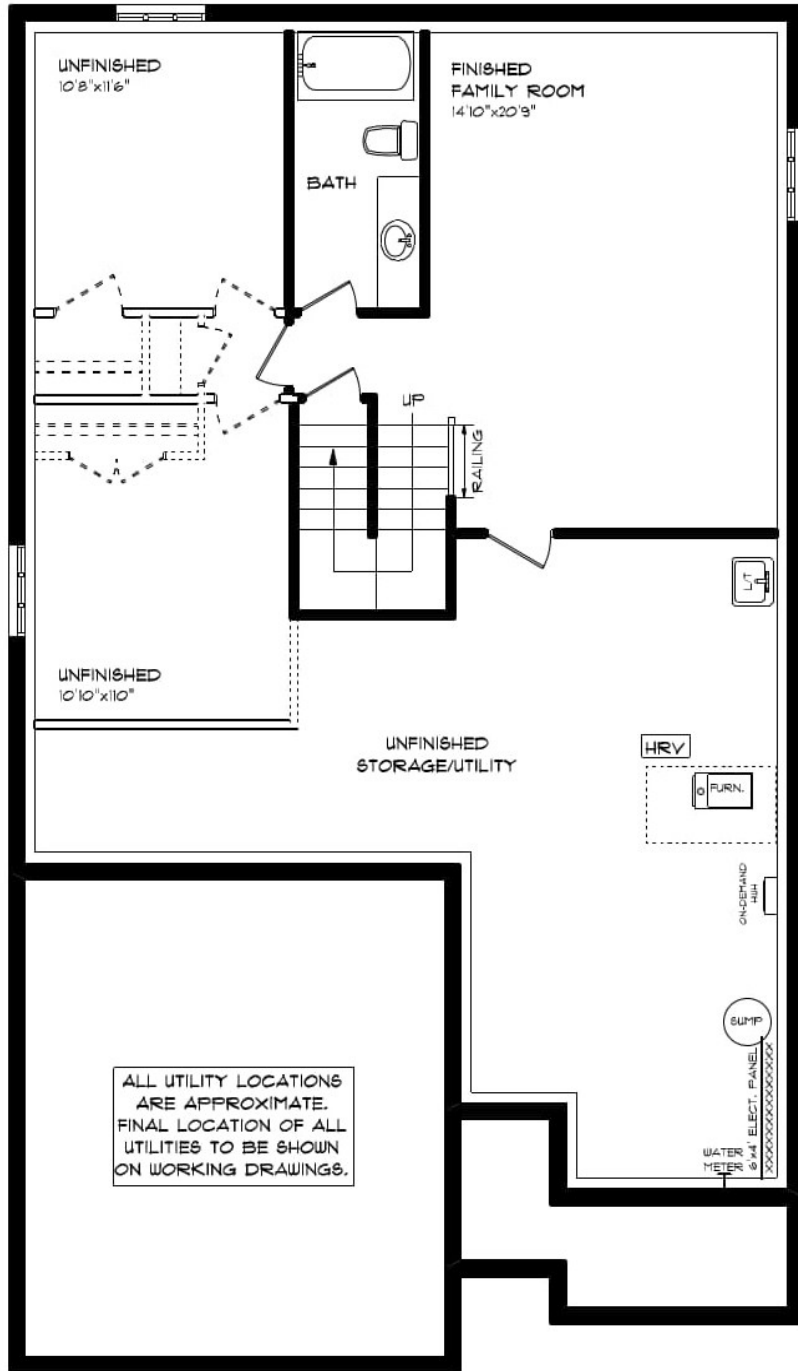
MAIN FLOOR:

APPROX 1,438 SQ FT

**HAYHOE**<sup>TM</sup>  
HOMES

# BASEMENT

254 RENAISSANCE DR., ST. THOMAS



- AIR CONDITIONING
- GAS FURNACE WITH HRV
- HUMIDIFIER
- NEW HOME WARRANTY
- FINISHED FAMILY ROOM
- FINISHED BATHROOM

MAIN FLOOR:  
430 SQ FT

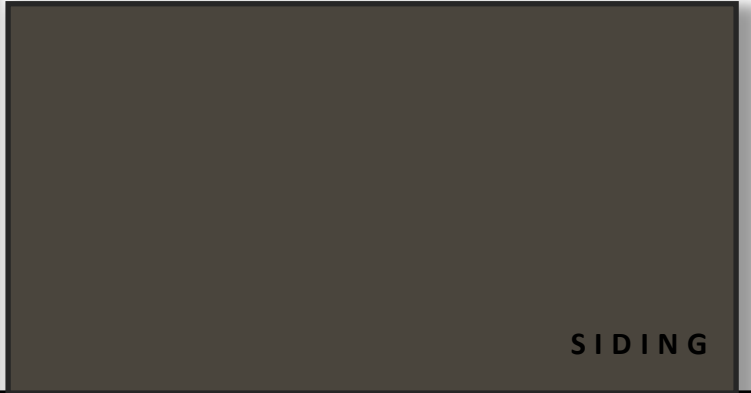


# EXTERIOR FINISHES

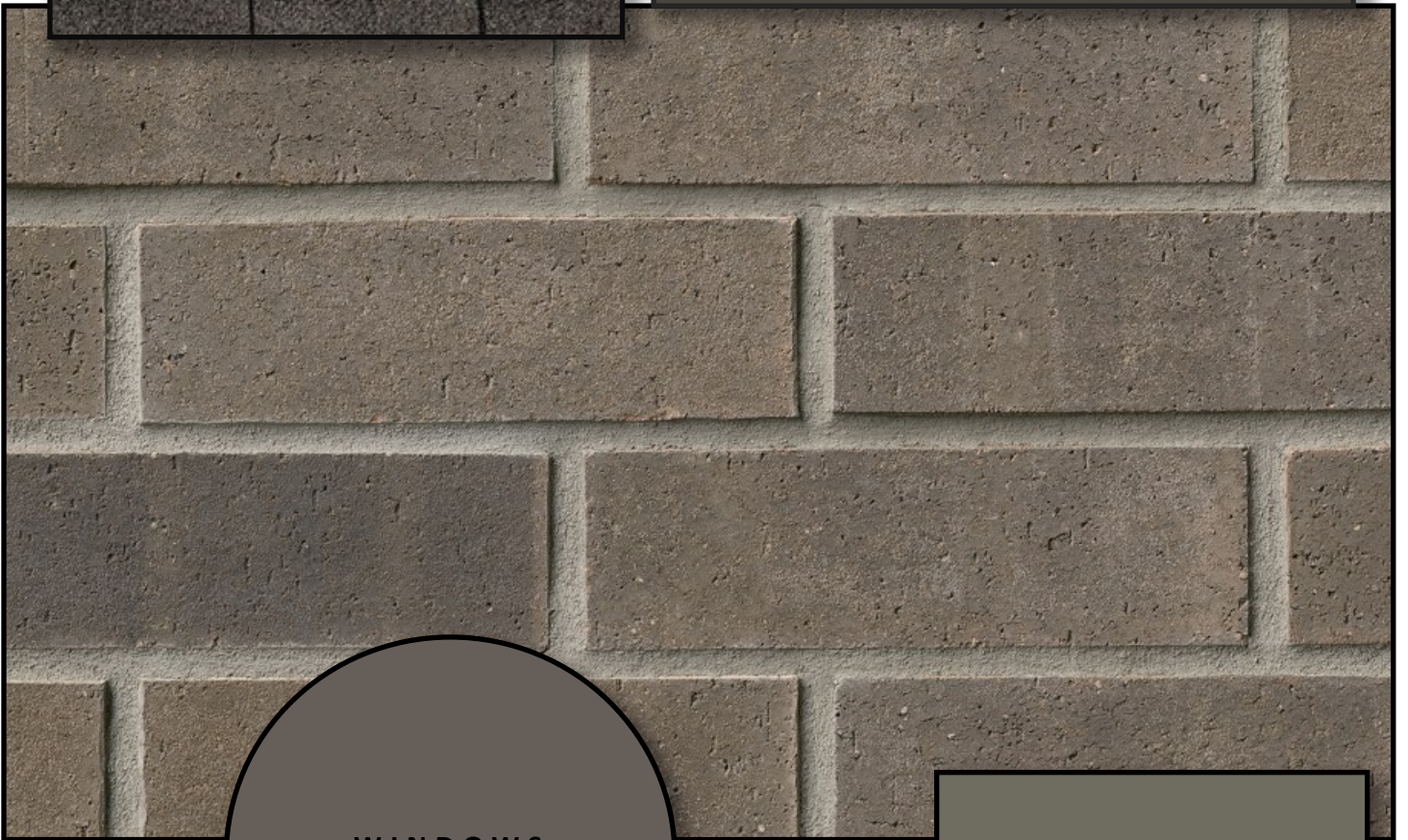
SHINGLES



254 RENAISSANCE DR.



SIDING

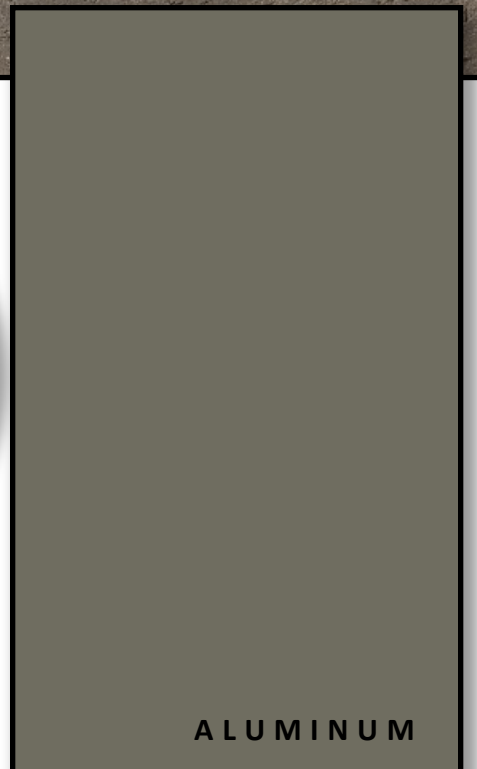


BRICK

WINDOWS

FRONT  
DOOR

GARAGE DOOR



ALUMINUM

**HAYHOE™**  
— HOMES —

# INTERIOR FINISHES

KITCHEN BACKSPLASH



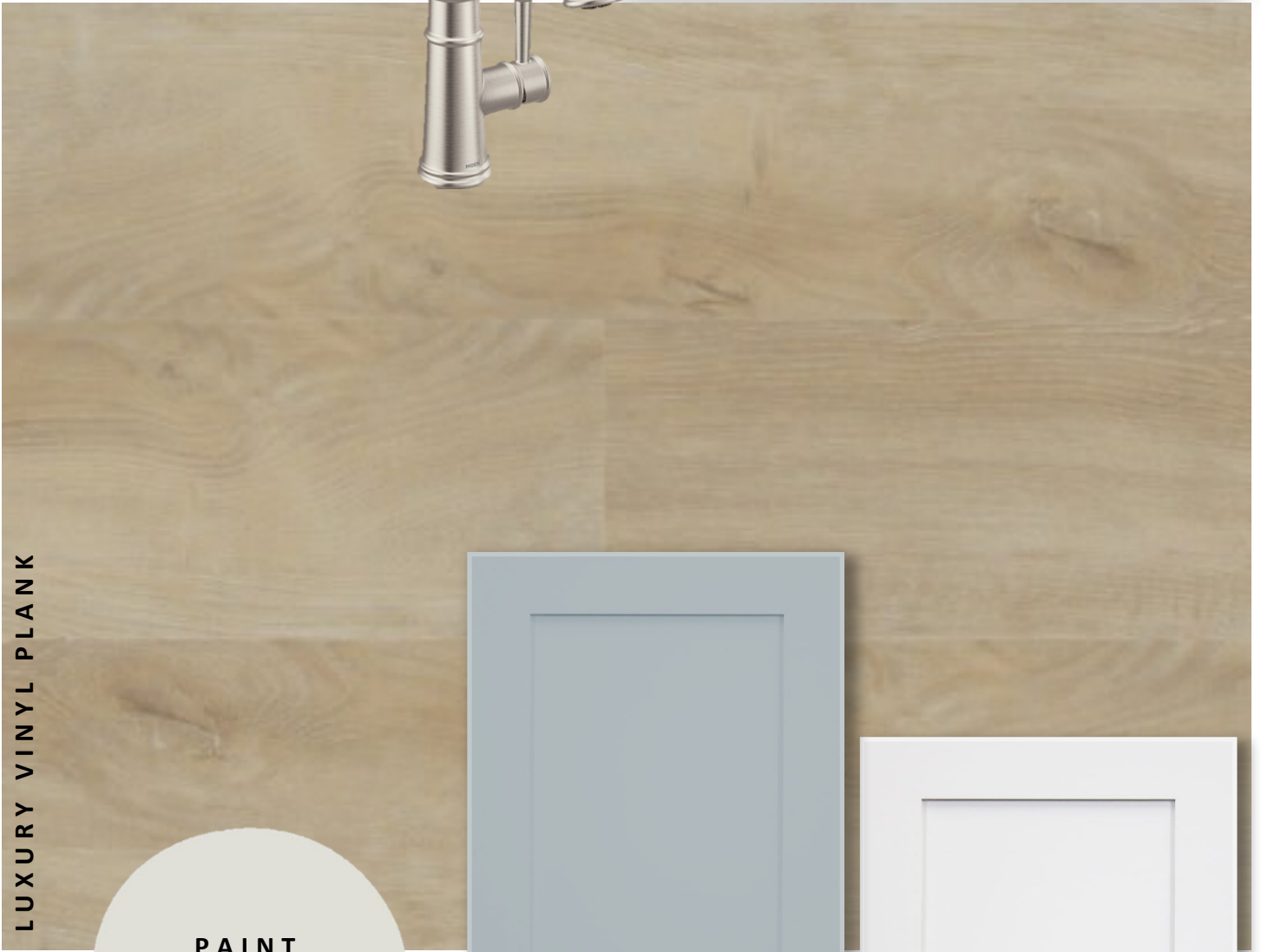
254 RENAISSANCE DR.



QUARTZ KITCHEN  
COUNTERTOPS



LUXURY VINYL PLANK



PAINT  
COLOUR



PAINTED  
KITCHEN ISLAND



PAINTED KITCHEN  
PERIMETER



PRICE, PRODUCTS, COLOURS & FEATURES  
ARE SUBJECT TO CHANGE WITHOUT NO-

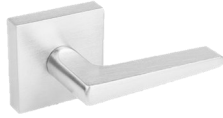
CREATED MAR 16, 2026

# INTERIOR FINISHES

INTERIOR DOOR STYLE



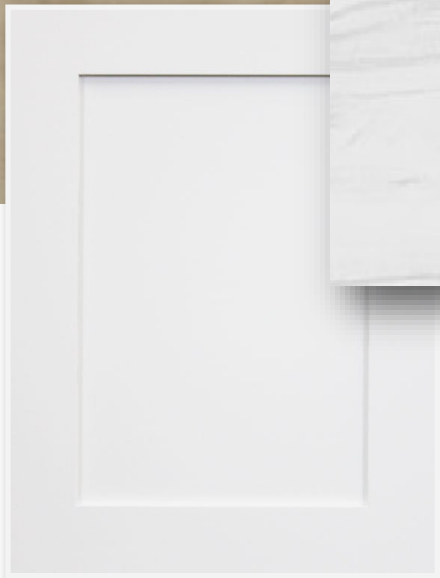
254 RENAISSANCE DR.



CARPET



LAMINATE MAIN  
BATH COUNTERTOPS



PAINTED  
MAIN BATH  
CABINETS



PAINTED  
ENSUITE  
CABINETS

**HAYHOE™**  
— HOMES —

PRICE, PRODUCTS, COLOURS & FEATURES ARE SUBJECT  
TO CHANGE WITHOUT NOTICE.

CREATED MAR 16, 2026