

# INVENTORY HOME



## 4 KEBA CRES

NORTHCREST ESTATES, TILLSONBURG

### THE DETAILS

PRICE	\$ 695,000
CLOSING DATE	Available Now
LOT NUMBER	77, PHASE 2
BEDROOMS	3
BATHS	2.5
SQFT	1,725
GARAGE	2
MODEL	WESTRIDGE

**HAYHOE™**  
— HOMES —



**SALES PROFESSIONAL**

LAURA BABCOCK

519.520.0539

[laura.babcock@hayhoehomes.com](mailto:laura.babcock@hayhoehomes.com)

# SITE PLAN

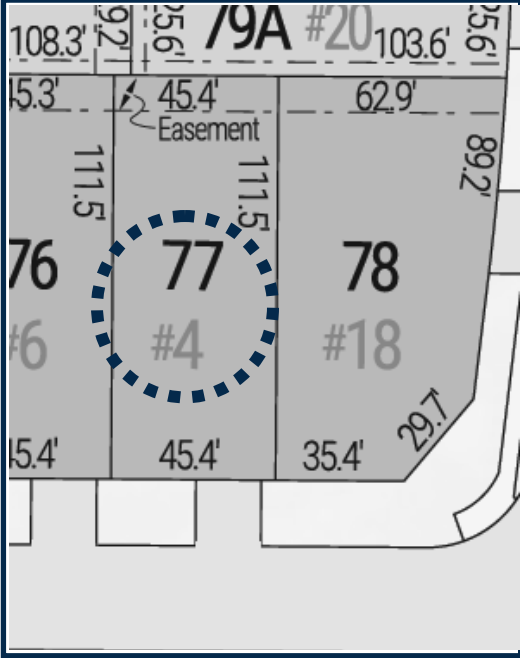


**4 KEBA CRES.**

**EXTERIOR FEATURES:**

- KEYLESS ENTRY
- TREATED WOOD DECK
- BBQ GAS LINE
- ASPHALT DRIVEWAY
- WALKING TRAILS

**HAYHOE™  
HOMES**

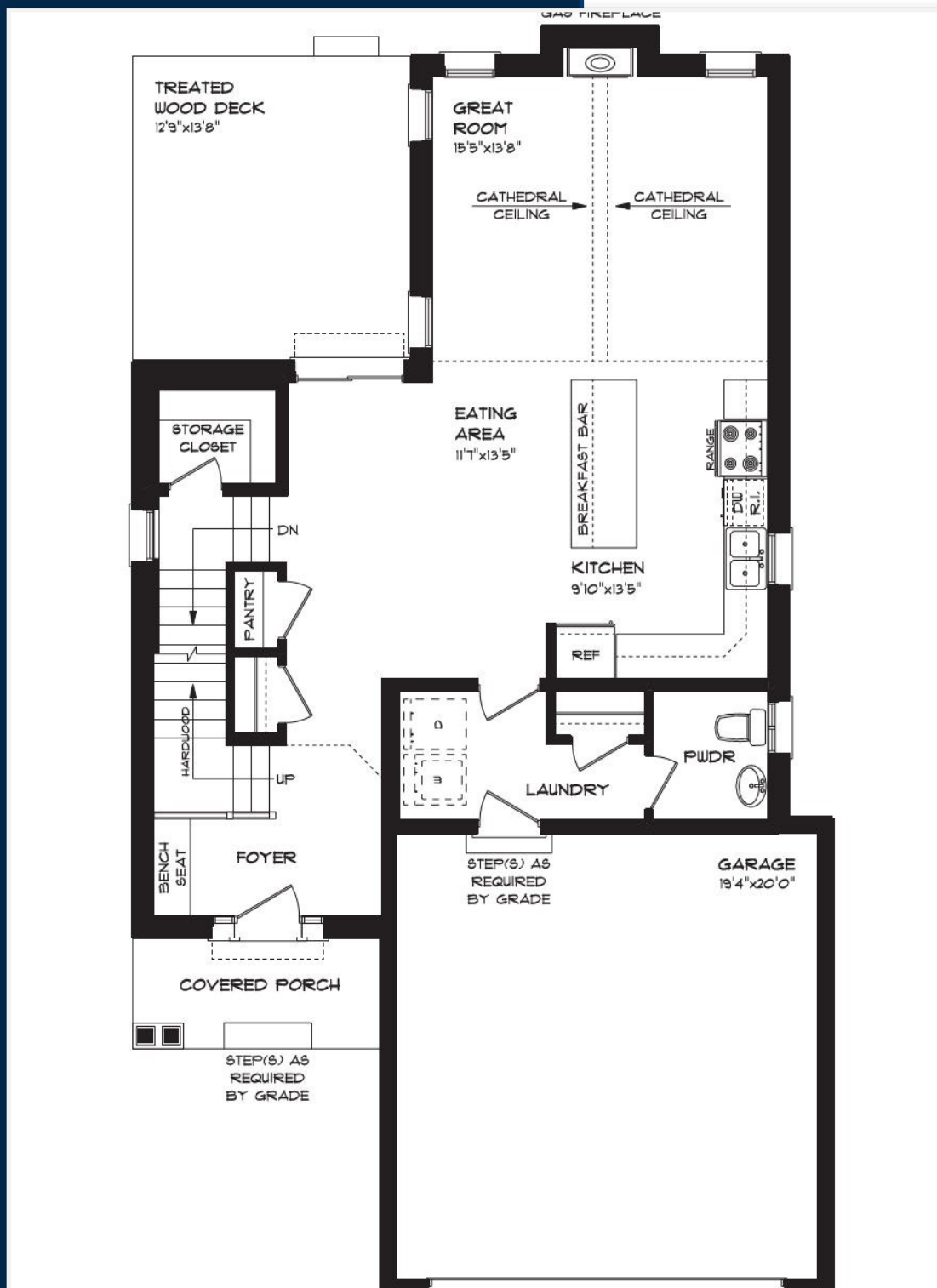


**NORTHCREST  
ESTATES**

PHASE 2

# MAIN FLOOR

4 KEBA CRES, TILLSONBURG



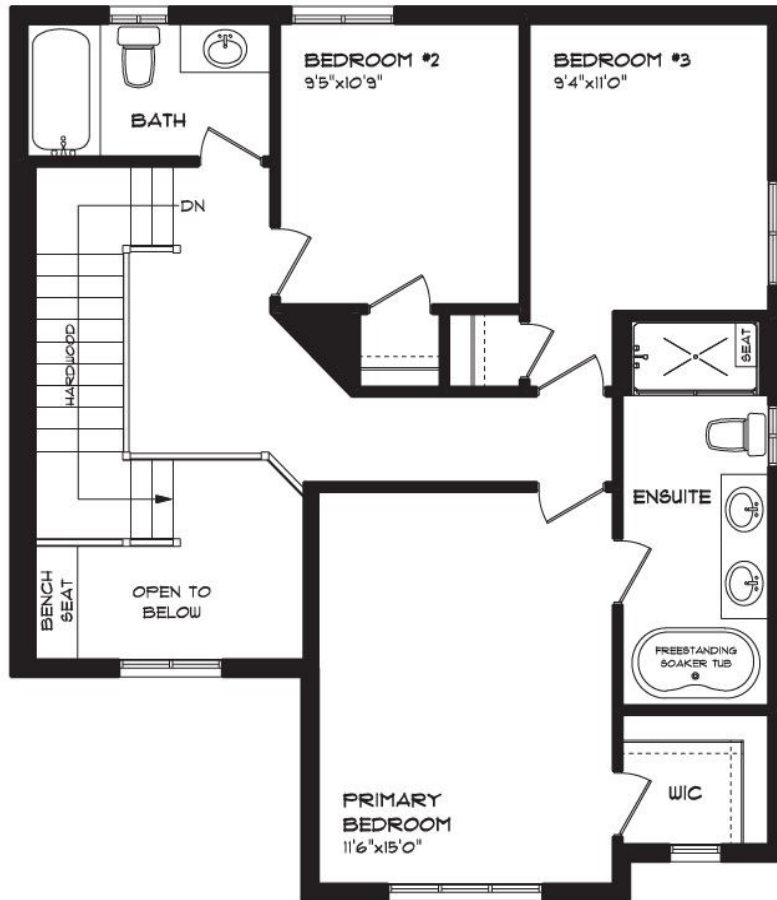
MAIN FLOOR LAUNDRY  
CUSTOM CABINETS & HOOD  
HARDWOOD FLOORING  
CHECKED TILED FLOORING  
QUARTZ COUNTERTOPS  
KITCHEN BACKSPLASH  
GAS FIREPLACE

MAIN FLOOR:  
APPROX 925 SQFT

**HAYHOE™**  
— HOMES —

# SECOND FLOOR

4 KEBA CRES, TILLSONBURG



SOAKER TUB

WALK-IN CLOSET

CARPET FLOORING

DOUBLE ENSUITE VANITY

TILED FLOORING

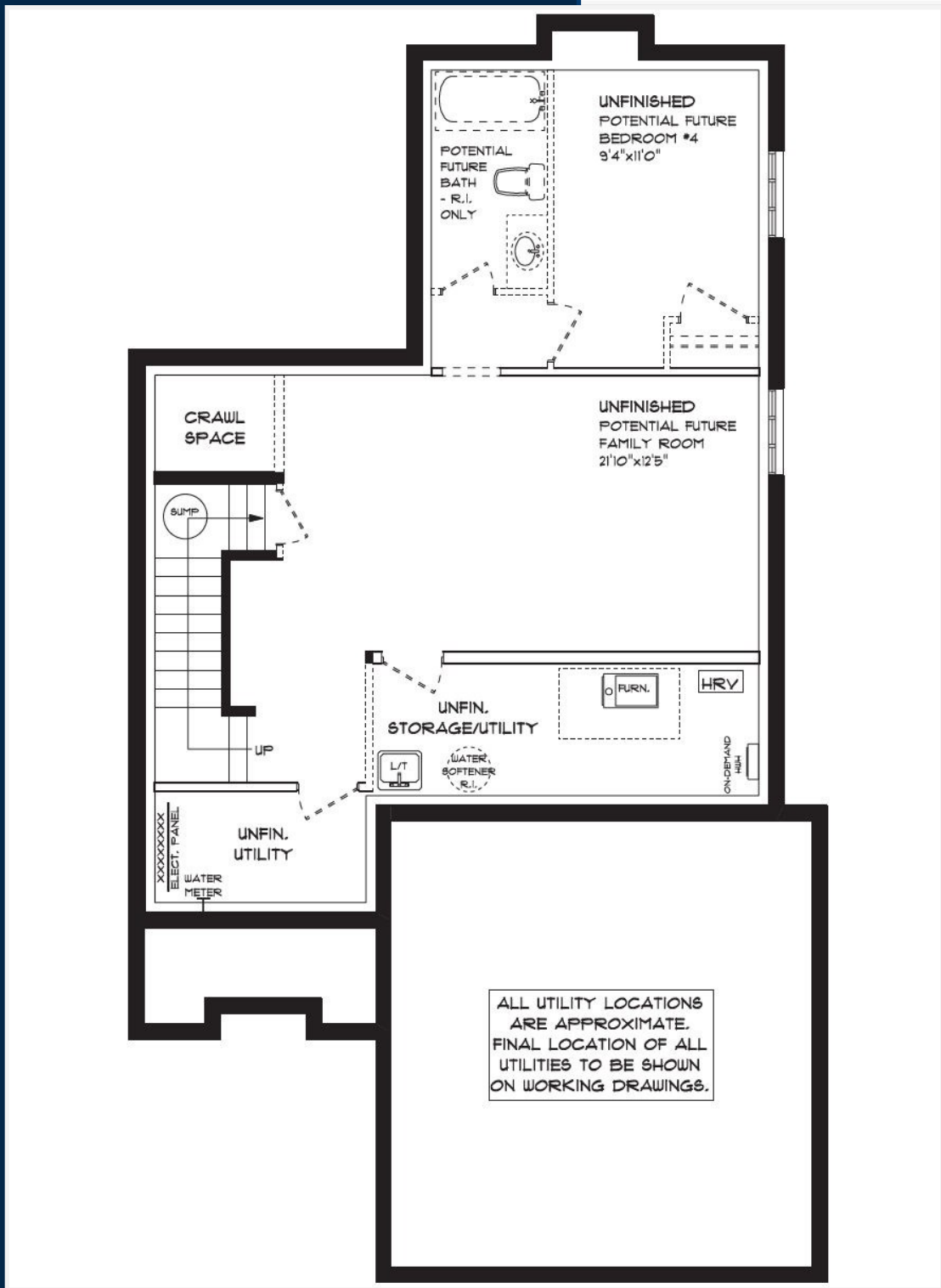
HARDWOOD STAIRS

SECOND FLOOR:  
APPROX 800 SQFT

**HAYHOE™**  
— HOMES —

# BASEMENT

4 KEBA CRES, TILLSONBURG



BASEMENT:  
UNFINISHED

AIR CONDITIONING  
GAS FURNACE WITH HRV  
HUMIDIFIER  
NEW HOME WARRANTY

**HAYHOE™**  
— HOMES —

# EXTERIOR FINISHES

SHINGLES



4 KEBA CRES

SIDING

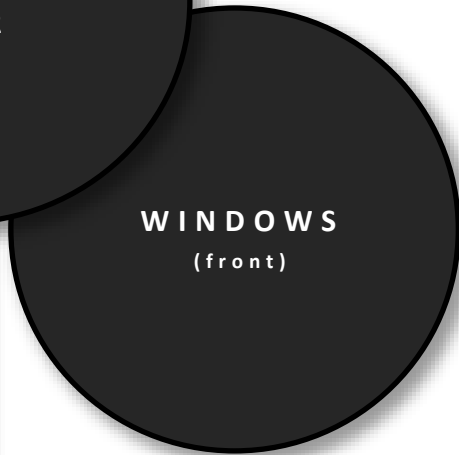


BRICK

FRONT  
DOOR



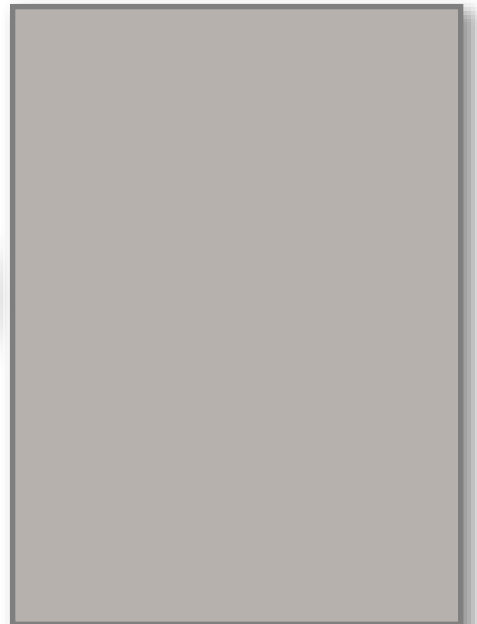
WINDOWS  
(front)



GARAGE  
DOOR



ALUMINUM



**HAYHOE™**  
— HOMES —

# INTERIOR FINISHES

## 4 KEBA CRES

KITCHEN BACKSPASH



QUARTZ KITCHEN  
COUNTERTOP



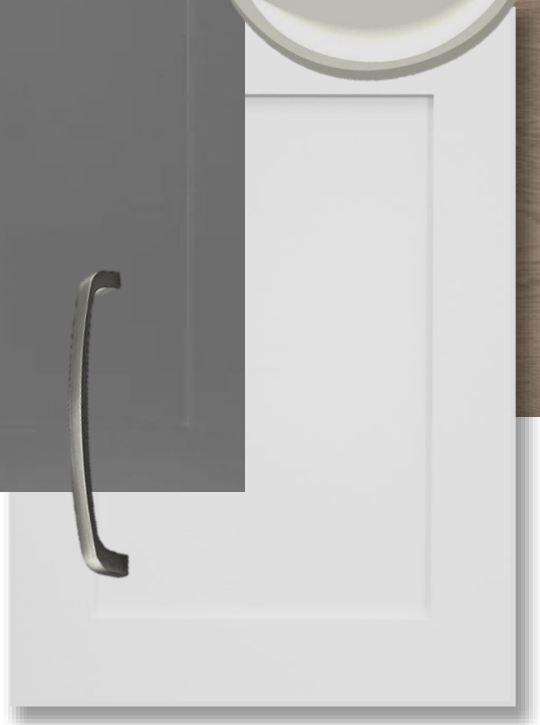
HARDWOOD



PAINT  
COLOUR



PAINTED  
KITCHEN  
LOWERS



PAINTED KITCHEN  
UPPERS & ISLAND

MAIN  
FLOOR  
TILE

**HAYHOE™**  
— HOMES —

# INTERIOR FINISHES

## 4 KEBA CRES

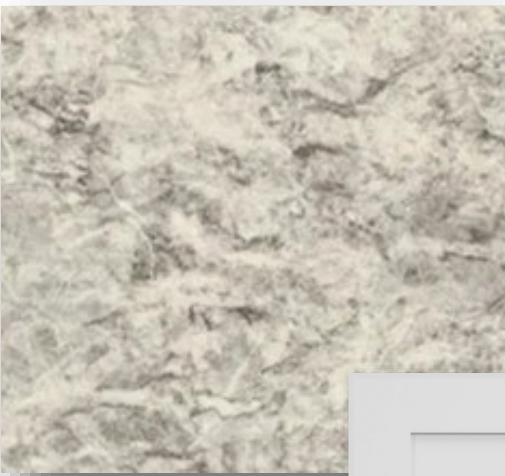
INTERIOR DOOR STYLE



CARPET



QUARTZ ENSUITE COUNTERTOPS



LAMINATE MAIN BATH COUNTERTOPS

PAINTED ENSUITE CABINETRY



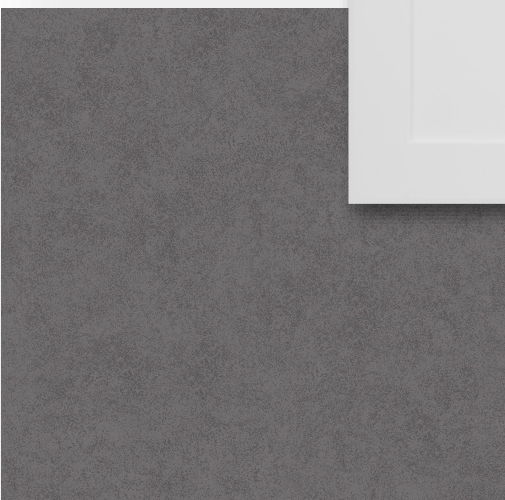
PAINTED MAIN BATH CABINETRY



ENSUITE FLOOR TILE



MAIN BATH FLOOR TILE



**HAYHOE™**  
**—HOMES—**