

ROLLING MEADOWS

INVENTORY HOME

11 Finch Street | Tillsonburg ON



THE DETAILS

PRICE	\$825,000
CLOSING DATE	Sept 29, 2026
LOT NUMBER	19
BEDROOMS	4
BATHS	3.5
GARAGE	2
DRIVEWAY	21'
SQ FT	2,563
MODEL	Wrencreek

Laura Babcock SALES PROFESSIONAL
519.520.0539 | laura.babcock@hayhoehomes.com



ROLLING MEADOWS

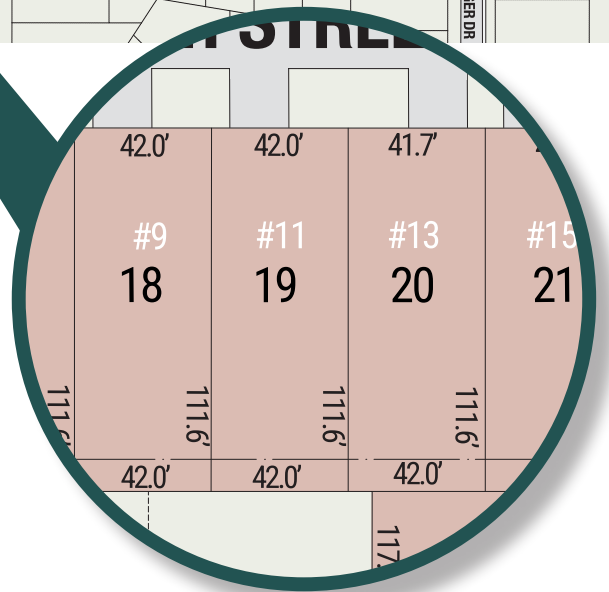
SITE PLAN

11 Finch Street | Tillsonburg ON



exterior features

- KEYLESS ENTRY
- TREATED WOOD DECK
- BBQ GAS LINE
- ASPHALT DRIVEWAY
- WALKING TRAILS



ROLLING MEADOWS

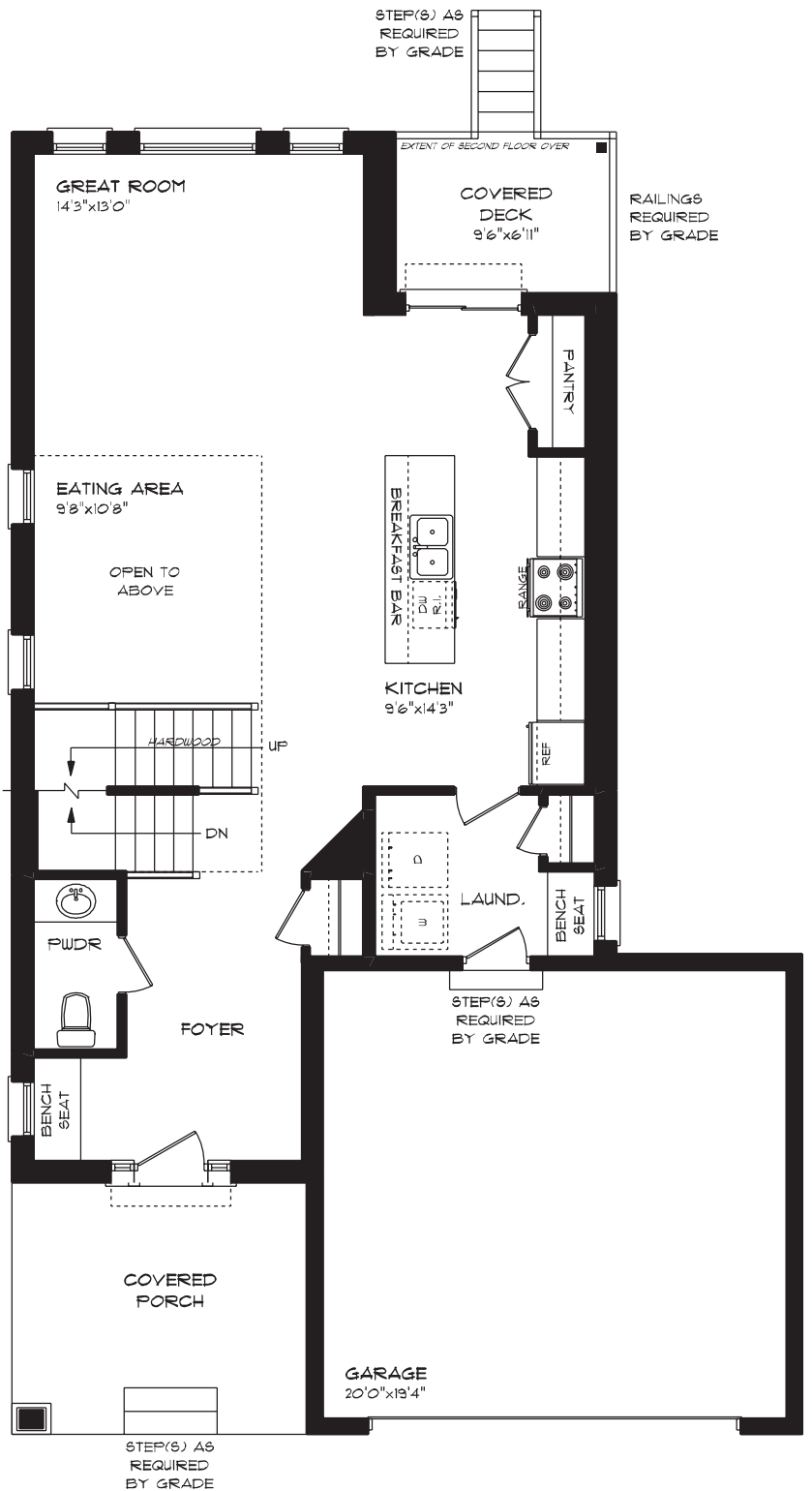
11 Finch Street | Tillsonburg ON

MAIN FLOOR

994 sq ft

features

- MAIN FLOOR LAUNDRY
- QUARTZ COUNTERTOPS
- KITCHEN BACKSPLASH
- DOUBLE CAR GARAGE
- CABINETRY PANTRY
- TWO STOREY DINING AREA
- POT LIGHTS
- HARDWOOD STAIRS
- HARDWOOD FLOORING
- TILE FLOORING



ROLLING MEADOWS

11 Finch Street | Tillsonburg ON

SECOND FLOOR

1,018 sq ft

features

PROFESSIONALLY DESIGNED

SOAKER TUB

CARPET FLOORING

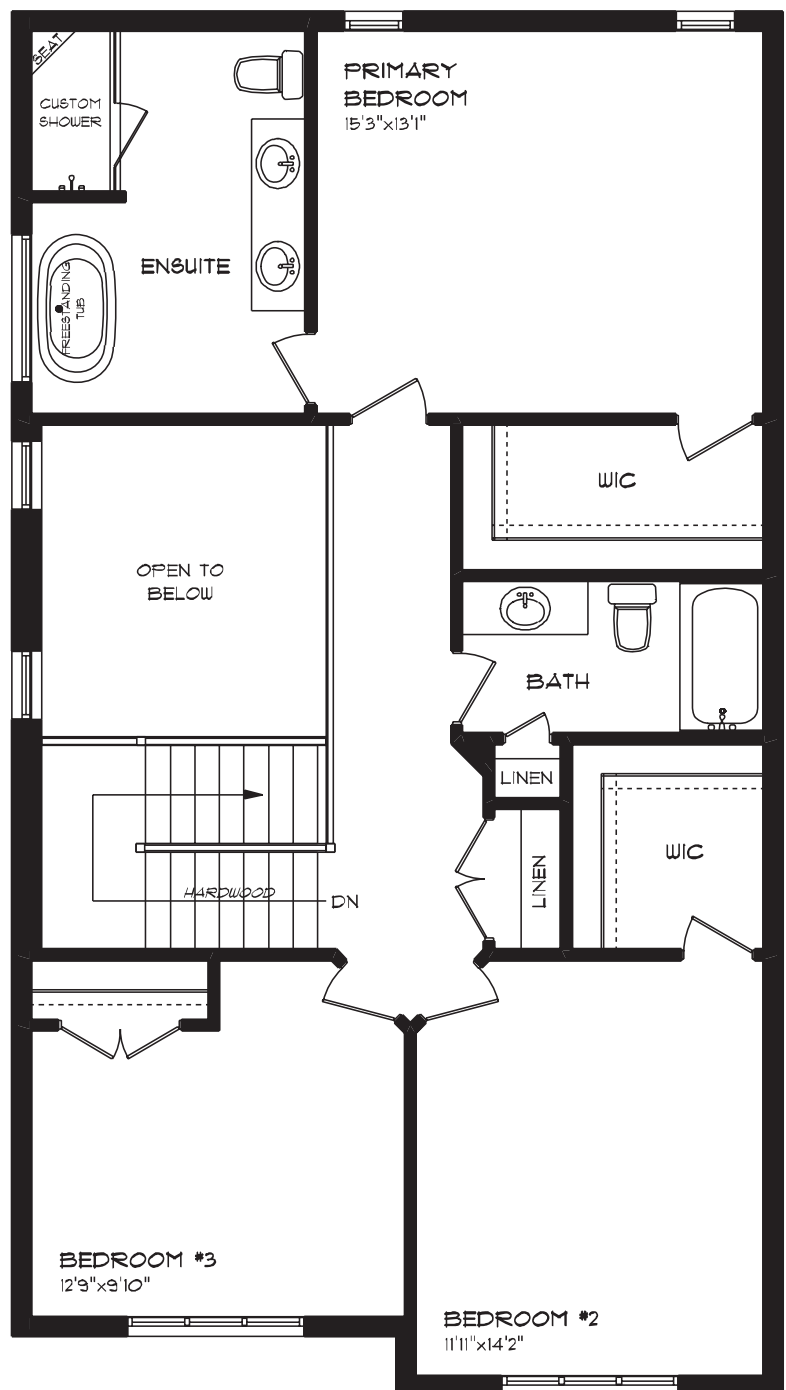
CERAMIC TILE FLOORING

WALK-IN CLOSET

UPGRADED FAUCETS

HARDWOOD STAIRS

TWO STOREY DINING AREA



ROLLING MEADOWS

11 Finch Street | Tillsonburg ON

LOWER LEVEL

551 sq ft

features

CARPET FLOORING

FINISHED FAMILY ROOM

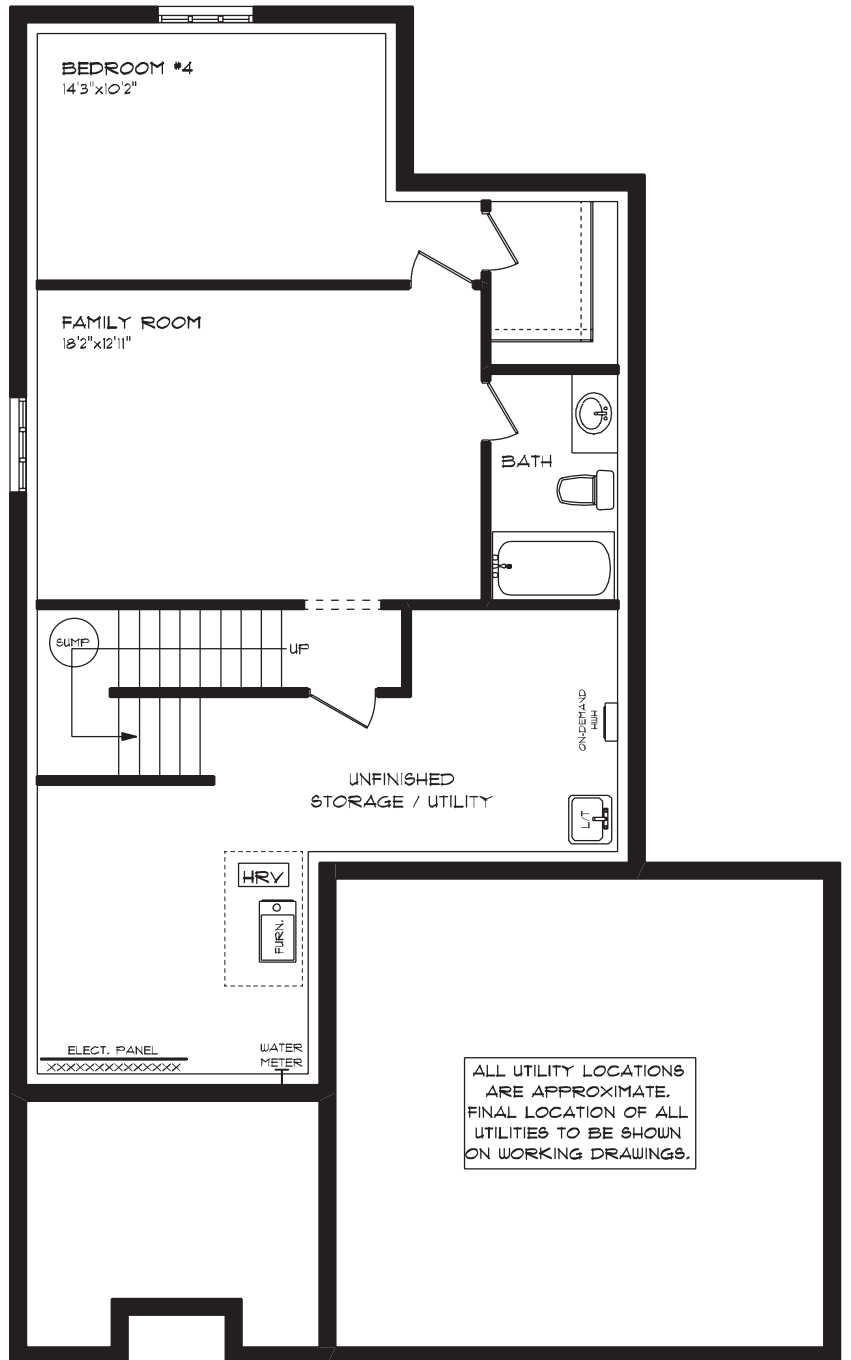
FINISHED BEDRM & BATH

AIR CONDITIONING

GAS FURNACE WITH HRV

HUMIDIFIER

NEW HOME WARRANTY



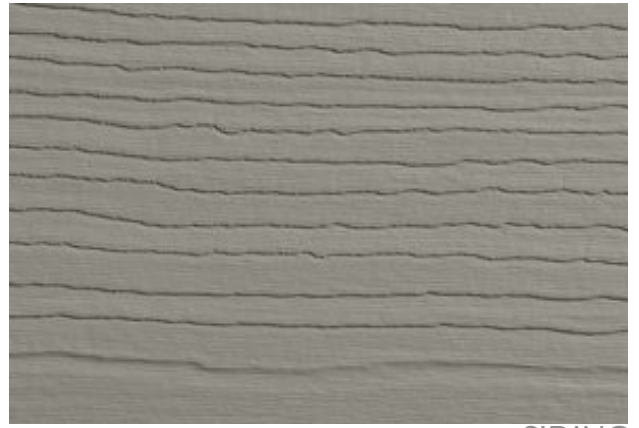
ROLLING MEADOWS

11 Finch Street | Tillsonburg ON

EXTERIOR FINISHES



SHINGLES



SIDING

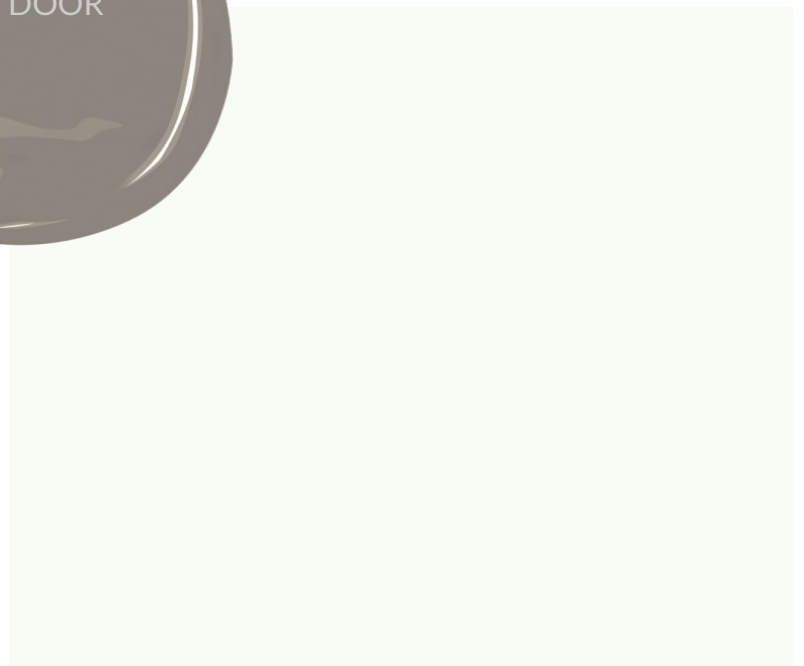
BRICK



STONE ACCENT



FRONT DOOR



ALUMINUM, WINDOWS, GARAGE DOOR

ROLLING MEADOWS

11 Finch Street | Tillsonburg ON

INTERIOR FINISHES

KITCHEN BACKSPLASH



QUARTZ KITCHEN COUNTERTOPS



WALL COLOUR



MAIN FLOOR TILE



PAINTED KITCHEN CABINETRY



ROLLING MEADOWS

11 Finch Street | Tillsonburg ON

INTERIOR FINISHES

CARPET



INTERIOR DOOR STYLE



QUARTZ ENSUITE COUNTERTOP



BATHROOM TILE



PAINTED ENSUITE VANITY



PAINTED MAIN BATH VANITY

WALL COLOUR



QUARTZ
MAIN BATH
COUNTERTOP