

ROLLING MEADOWS

INVENTORY HOME

5 Finch Street | Tillsonburg ON



THE DETAILS

PRICE	\$719,000
CLOSING DATE	April 1, 2026
LOT NUMBER	16
BEDROOMS	3
BATHS	3
GARAGE	1
DRIVEWAY	18'
SQ FT	1,861
MODEL	Handfield

Janell Heyerman SALES PROFESSIONAL
519.842.2435 | janell.heyerman@hayhoehomes.com



ROLLING MEADOWS

SITE PLAN

5 Finch Street | Tillsonburg ON



exterior features

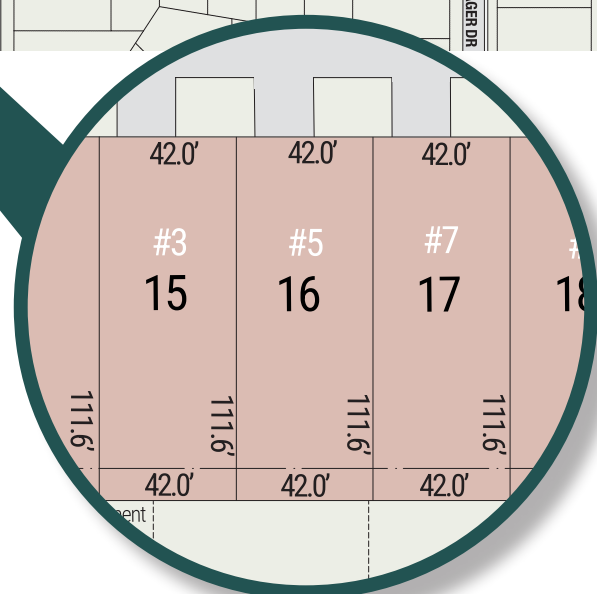
KEYLESS ENTRY

TREATED WOOD DECK

BBQ GAS LINE

ASPHALT DRIVEWAY

WALKING TRAILS



ROLLING MEADOWS

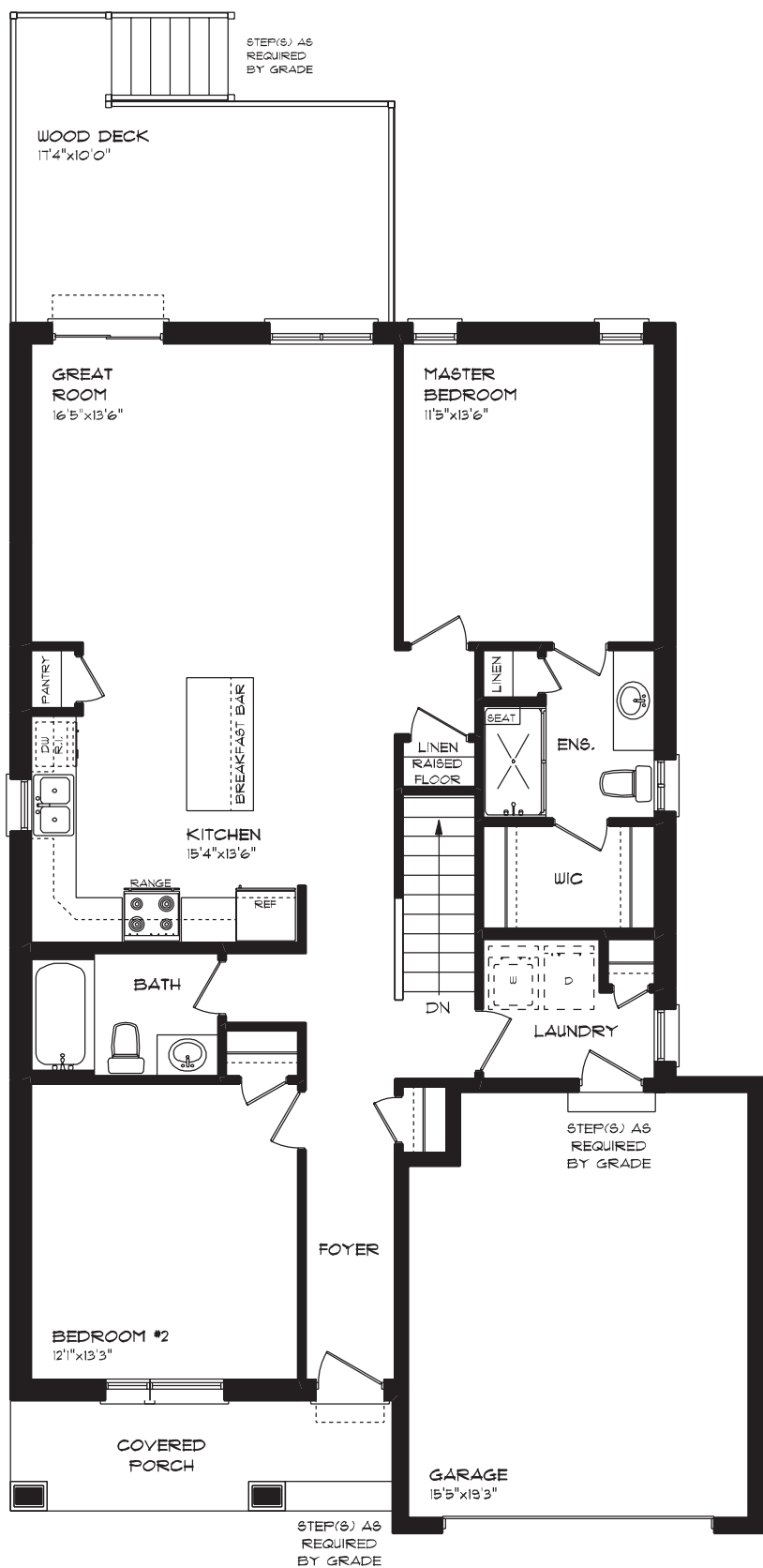
5 Finch Street | Tillsonburg ON

MAIN FLOOR

1,298 sq ft

features

- MAIN FLOOR LAUNDRY
- QUARTZ COUNTERTOPS
- KITCHEN BACKSPLASH
- DOUBLE CAR GARAGE
- KITCHEN PANTRY
- KITCHEN ISLAND
- POT LIGHTS
- LVP FLOORING



ROLLING MEADOWS

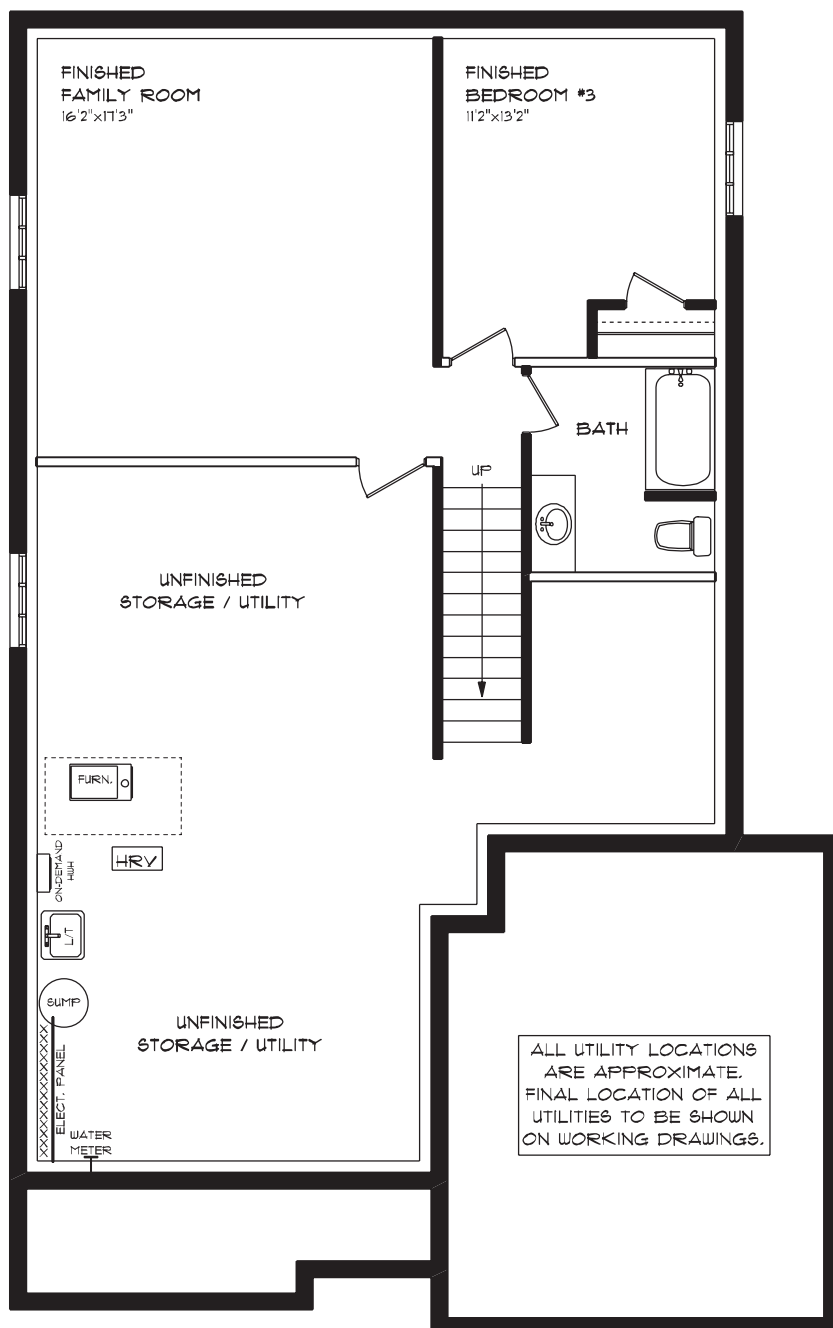
5 Finch Street | Tillsonburg ON

LOWER LEVEL

563 sq ft

features

- CARPET FLOORING
- FINISHED FAMILY ROOM
- FINISHED BEDROOM
- FINISHED BATHROOM
- TILE FLOORING
- AIR CONDITIONING
- GAS FURNACE WITH HRV
- HUMIDIFIER
- NEW HOME WARRANTY





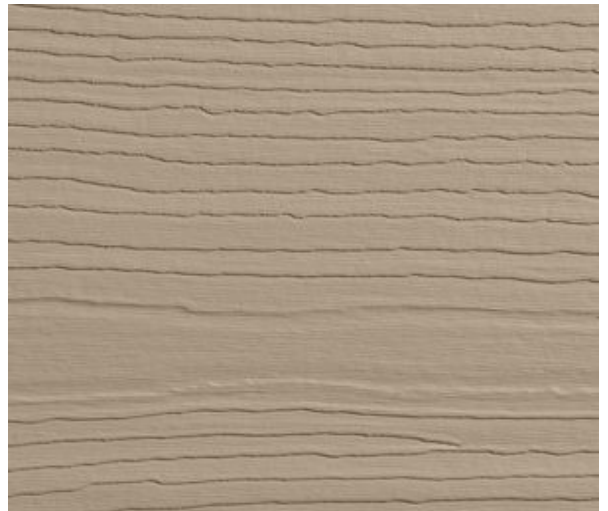
5 Finch Street | Tillsonburg ON

EXTERIOR FINISHES

SHINGLES



SIDING



BRICK



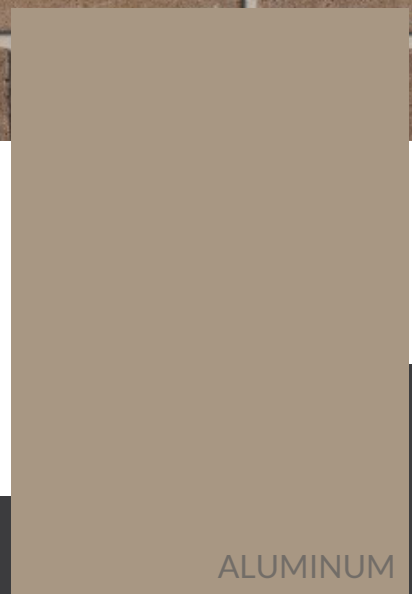
STONE ACCENT



FRONT DOOR



ALUMINUM



WINDOWS & GARAGE DOOR



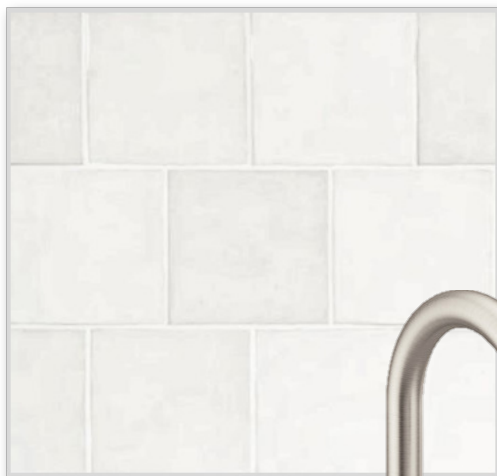
ALUMINUM

ROLLING MEADOWS

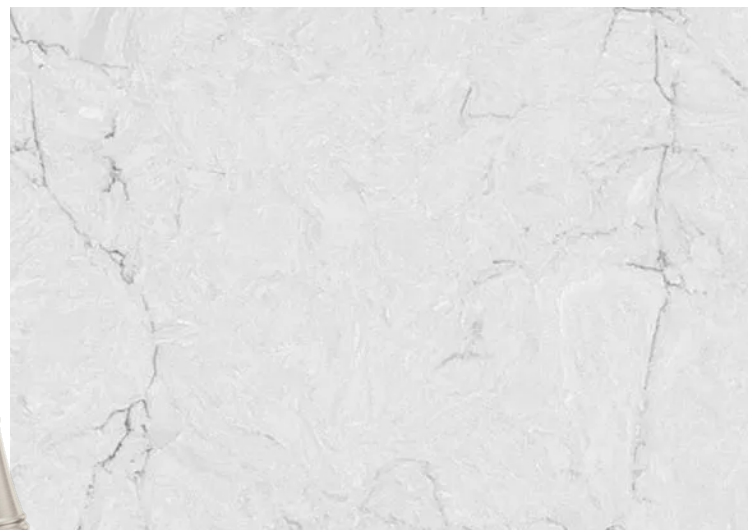
5 Finch Street | Tillsonburg ON

INTERIOR FINISHES

KITCHEN BACKSPLASH



QUARTZ KITCHEN COUNTERTOPS



LUXURY VINYL PLANK FLOORING



ISLAND PENDANTS

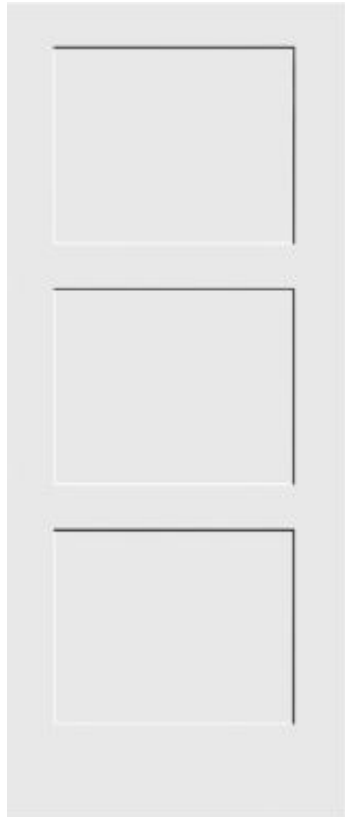


WALL COLOUR



PAINTED KITCHEN CABINETRY



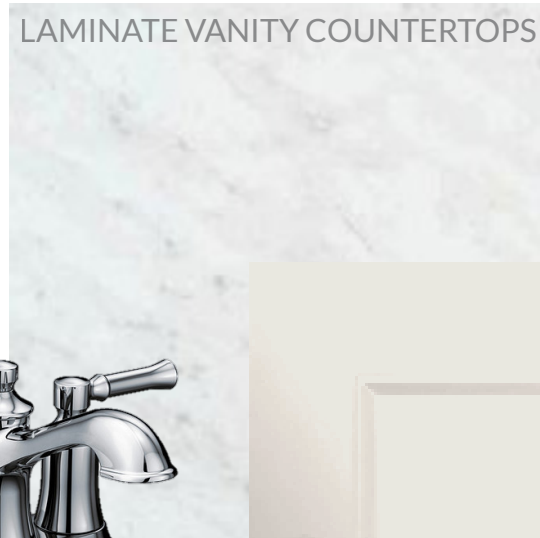


INTERIOR DOOR STYLE



CARPET

LAMINATE VANITY COUNTERTOPS



PAINTED VANITIES



LUXURY VINYL PLANK FLOORING

WALL COLOUR

