

# ROLLING MEADOWS

TOWNHOME

61 Woodcock Drive | Tillsonburg ON

PREMIUM  
SPECS



## THE DETAILS

PRICE	\$566,500
CLOSING DATE	Available Now
LOT NUMBER	10E
BEDROOMS	4
BATHS	3.5
GARAGE	1
DRIVEWAY	12' 4"
SQ FT	2,443
MODEL	Tifton

Laura Babcock SALES PROFESSIONAL  
519.520.0539 | [laura.babcock@hayhoehomes.com](mailto:laura.babcock@hayhoehomes.com)



# ROLLING MEADOWS

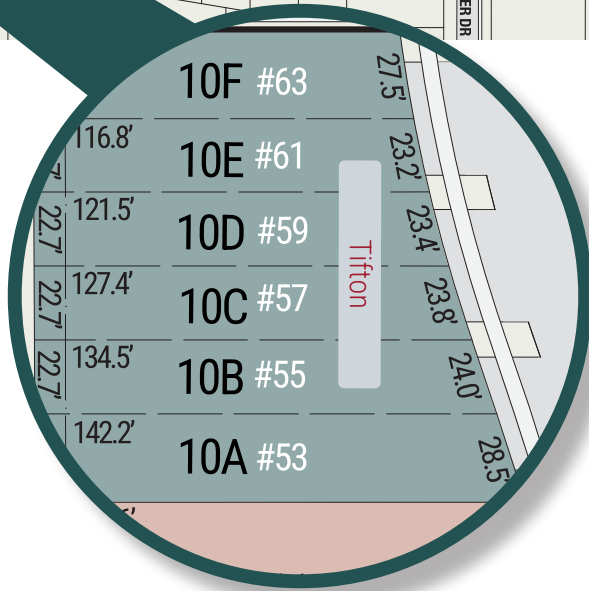
## SITE PLAN

61 Woodcock Drive | Tillsonburg ON



### exterior features

- KEYLESS ENTRY
- TREATED WOOD DECK
- BBQ GAS LINE
- ASPHALT DRIVEWAY
- WALKING TRAILS



# ROLLING MEADOWS

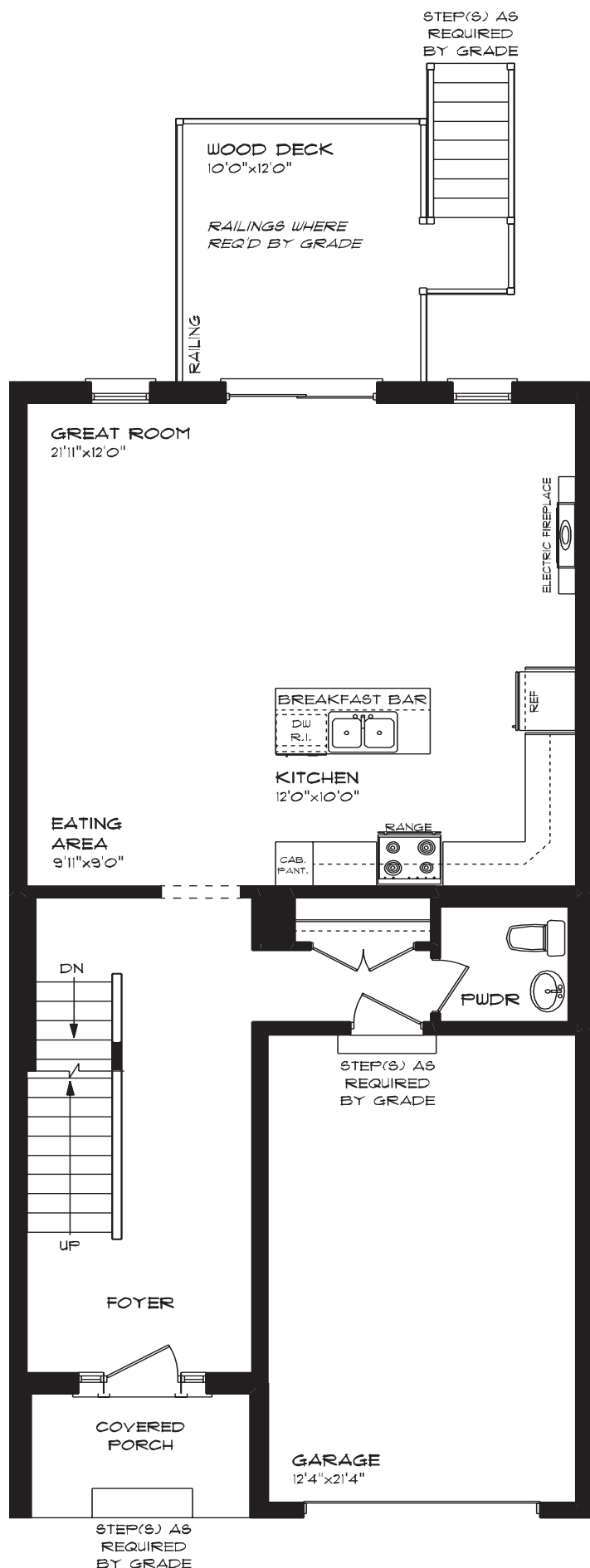
61 Woodcock Drive | Tillsonburg ON

## MAIN FLOOR

836 sq ft

### features

- QUARTZ COUNTERTOPS
- KITCHEN BACKSPLASH
- LUXURY VINYL PLANK FLOORING
- KITCHEN ISLAND
- 8' MAIN FLOOR CEILING
- SINGLE CAR GARAGE
- KITCHEN PANTRY



# ROLLING MEADOWS

61 Woodcock Drive | Tillsonburg ON

## SECOND FLOOR

1006 sq ft

### features

PROFESSIONALLY DESIGNED

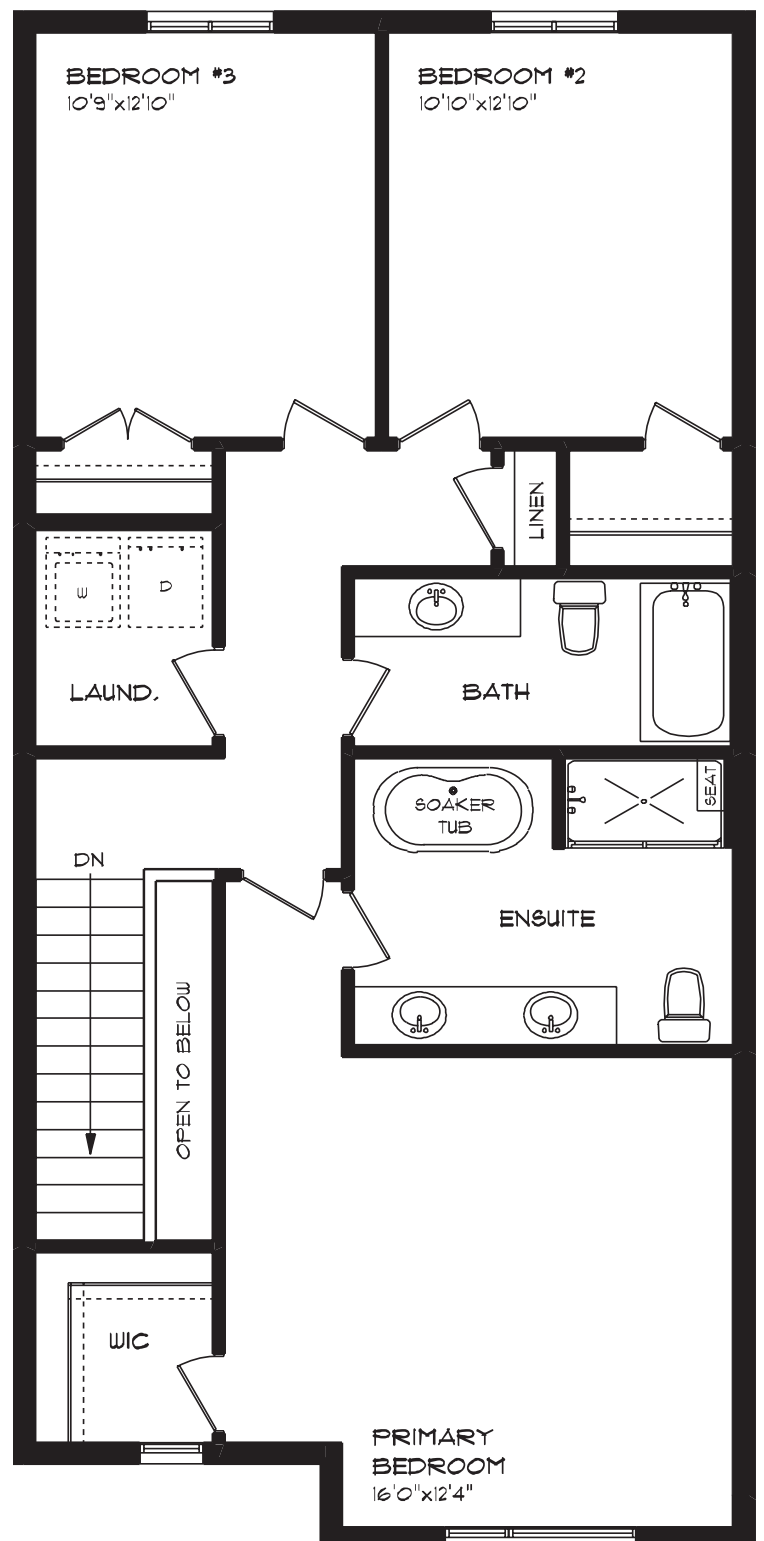
LUXURY VINYL PLANK FLOORING

CARPET FLOORING

SECOND FLOOR LAUNDRY

ENSUITE BATH

WALK-IN CLOSET



# ROLLING MEADOWS

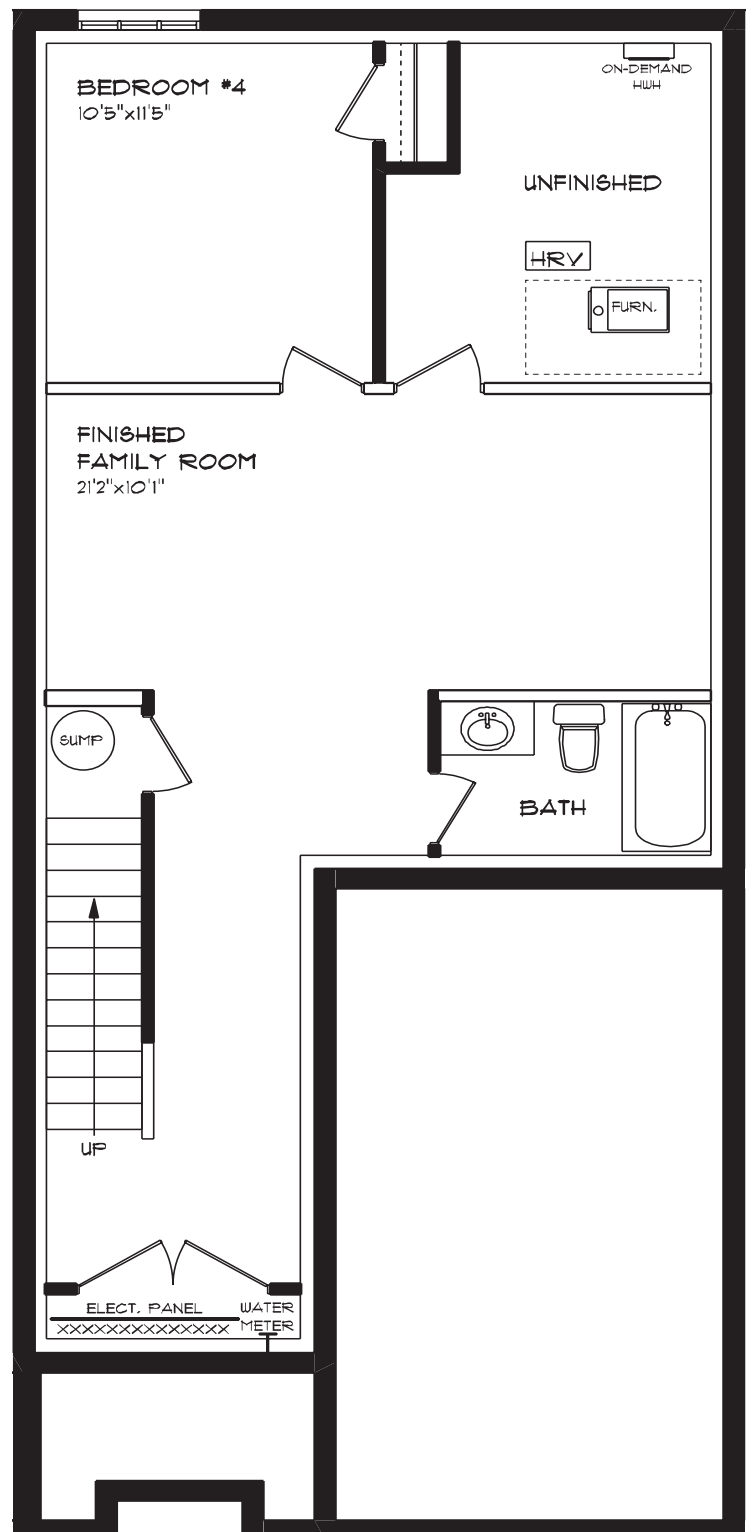
61 Woodcock Drive | Tillsonburg ON

## LOWER LEVEL

601 sq ft

### features

- AIR CONDITIONING
- GAS FURNACE WITH HRV
- HUMIDIFIER
- NEW HOME WARRANTY



# ROLLING MEADOWS

61 Woodcock Drive | Tillsonburg ON

## INTERIOR FINISHES



KITCHEN BACKSPLASH



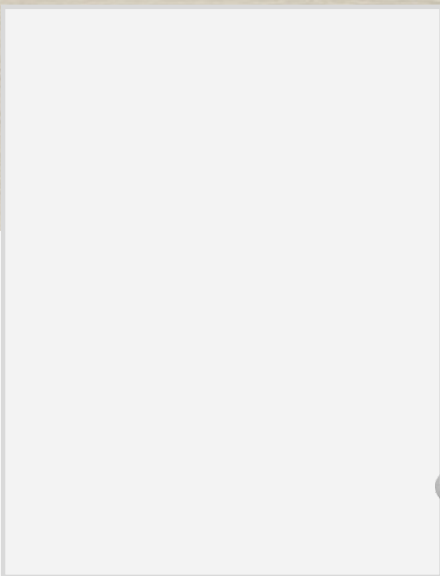
QUARTZ KITCHEN COUNTERTOPS



LUXURY VINYL PLANK



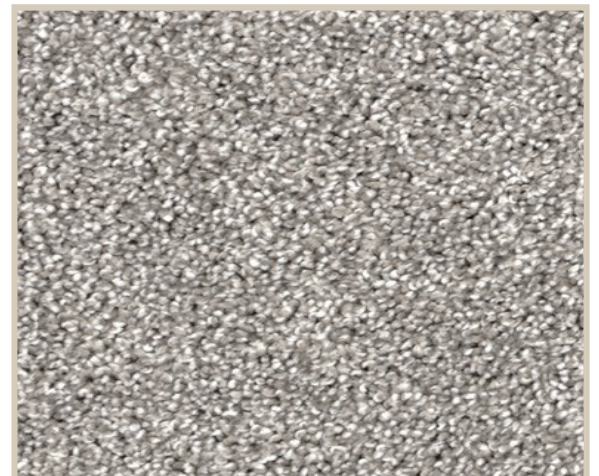
MELAMINE KITCHEN CABINETRY



MELAMINE VANITY CABINETRY



LAMINATE VANITY COUNTERTOPS



CARPET