

# ROLLING MEADOWS

TOWNHOME

42 Finch Street | Tillsonburg ON

ESSENTIAL  
SPECS



## THE DETAILS

PRICE	\$599,000
CLOSING DATE	June 25, 2026
LOT NUMBER	37D
BEDROOMS	4
BATHS	2.5
GARAGE	2
DRIVEWAY	17'
SQ FT	1,976
MODEL	Clifton

Laura Babcock SALES PROFESSIONAL

519.520.0539 | [laura.babcock@hayhoehomes.com](mailto:laura.babcock@hayhoehomes.com)



[WWW.HAYHOEHOMES.COM](http://WWW.HAYHOEHOMES.COM)

Price, products, colours & features are subject to change without notice. E. & O. E. SEPTEMBER 17, 2025

**HAYHOE**<sup>TM</sup>  
HOMES

# ROLLING MEADOWS

## SITE PLAN

42 Finch Street | Tillsonburg ON



### exterior features

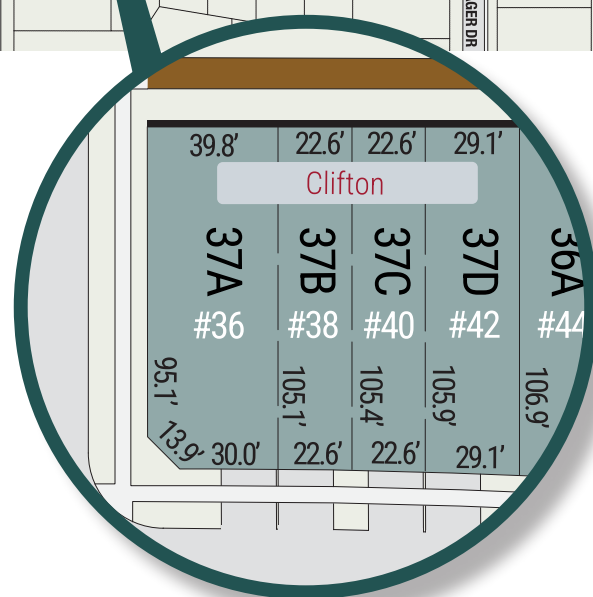
KEYLESS ENTRY

TREATED WOOD DECK

BBQ GAS LINE

ASPHALT DRIVEWAY

WALKING TRAILS



# ROLLING MEADOWS

42 Finch Street | Tillsonburg ON

## MAIN FLOOR

831 sq ft

### features

QUARTZ COUNTERTOPS

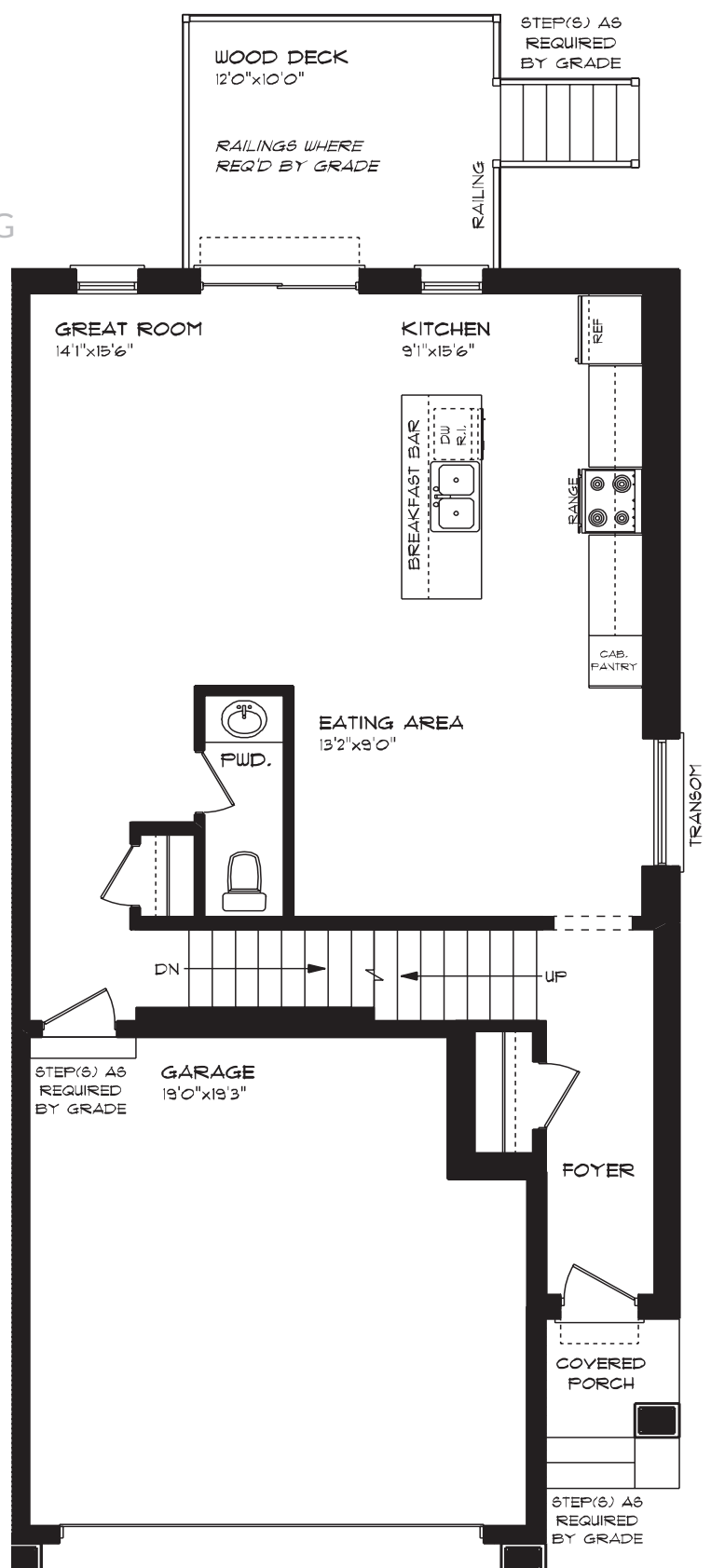
LUXURY VINYL PLANK FLOORING

KITCHEN ISLAND

9' MAIN FLOOR CEILING

DOUBLE CAR GARAGE

KITCHEN PANTRY



# ROLLING MEADOWS

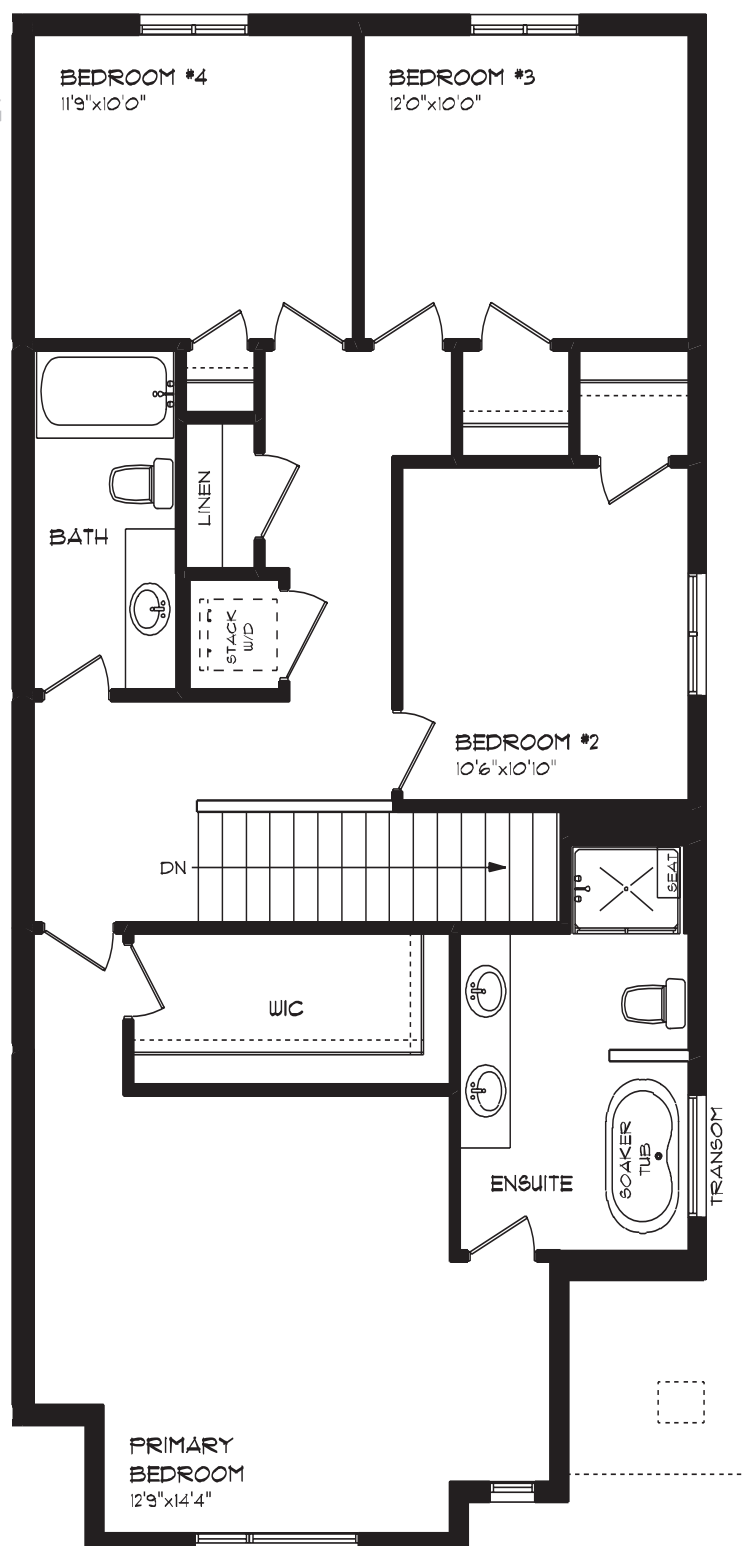
42 Finch Street | Tillsonburg ON

## SECOND FLOOR

1,145 sq ft

### features

- PROFESSIONALLY DESIGNED
- LUXURY VINYL PLANK FLOORING
- CARPET FLOORING
- ENSUITE BATH
- SECOND FLOOR LAUNDRY
- WALK-IN CLOSET





# ROLLING MEADOWS

42 Finch Street | Tillsonburg ON

## LOWER LEVEL

Unfinished

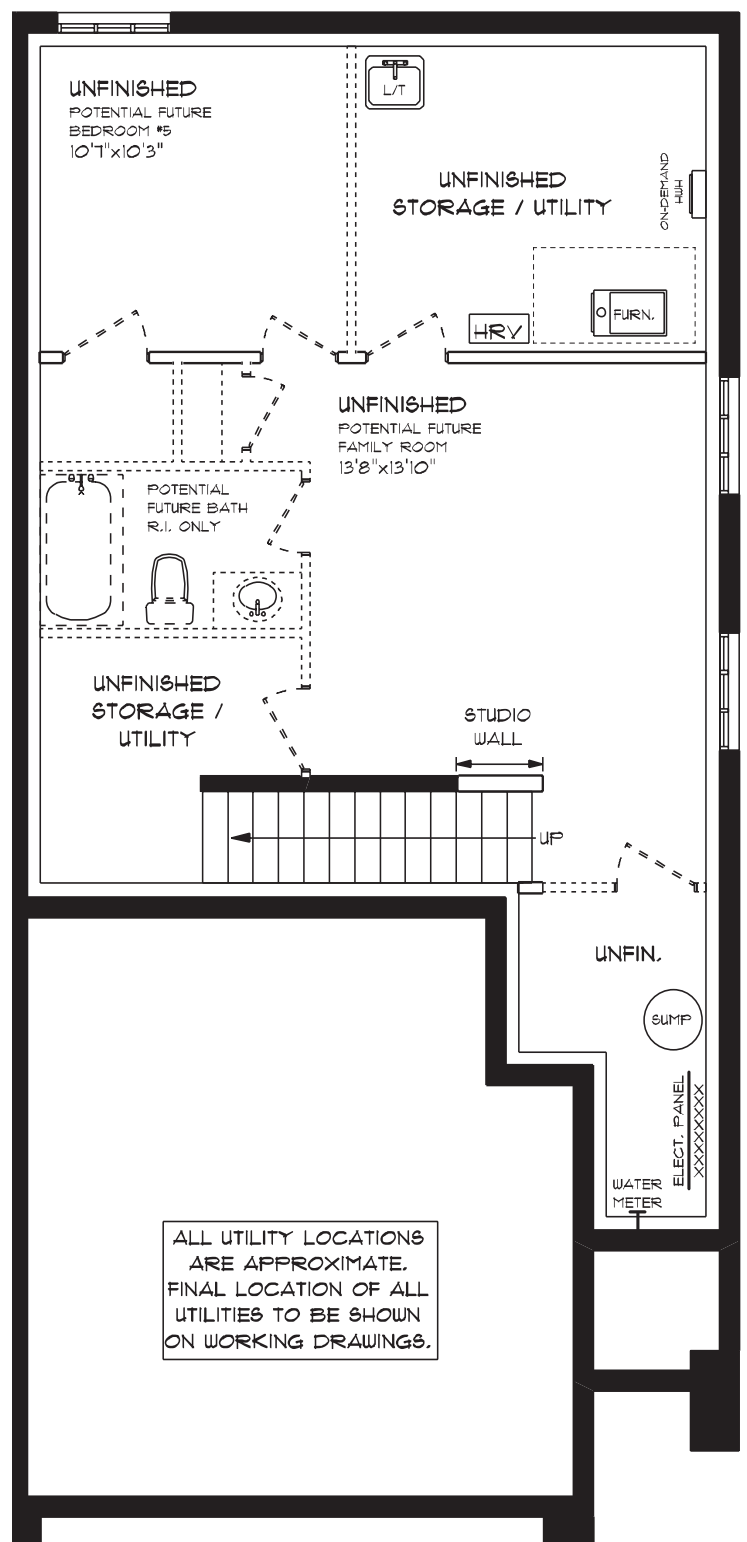
### features

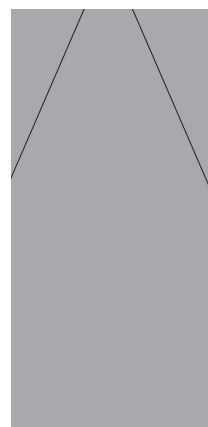
AIR CONDITIONING

GAS FURNACE WITH HRV

HUMIDIFIER

NEW HOME WARRANTY

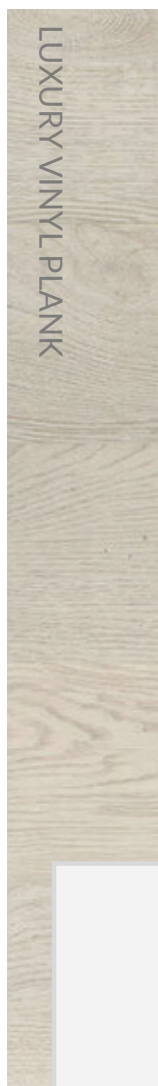




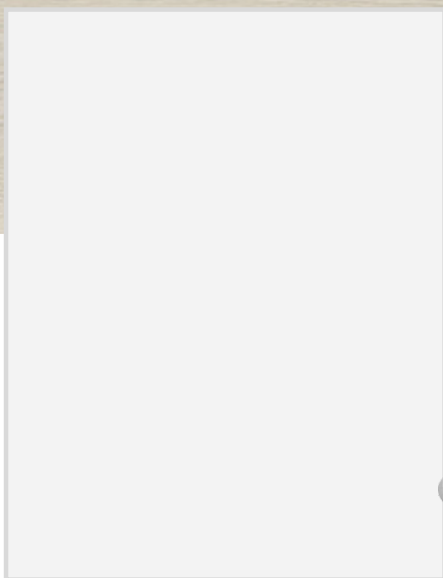
QUARTZ KITCHEN COUNTERTOPS



LUXURY VINYL PLANK



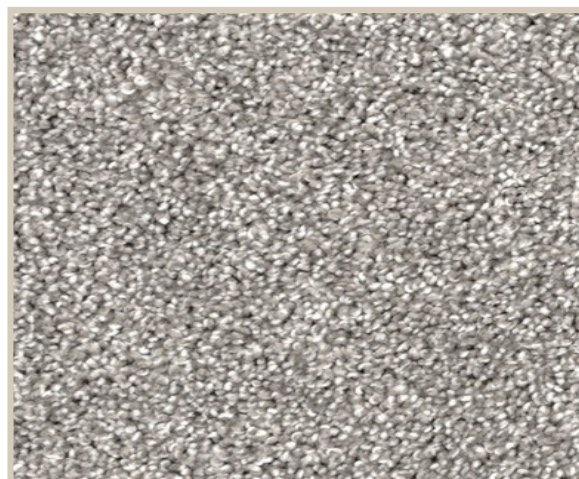
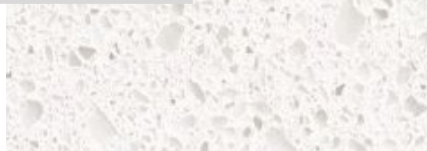
MELAMINE KITCHEN CABINETS



MELAMINE VANITY CABINETS



LAMINATE VANITY COUNTERTOPS



CARPET