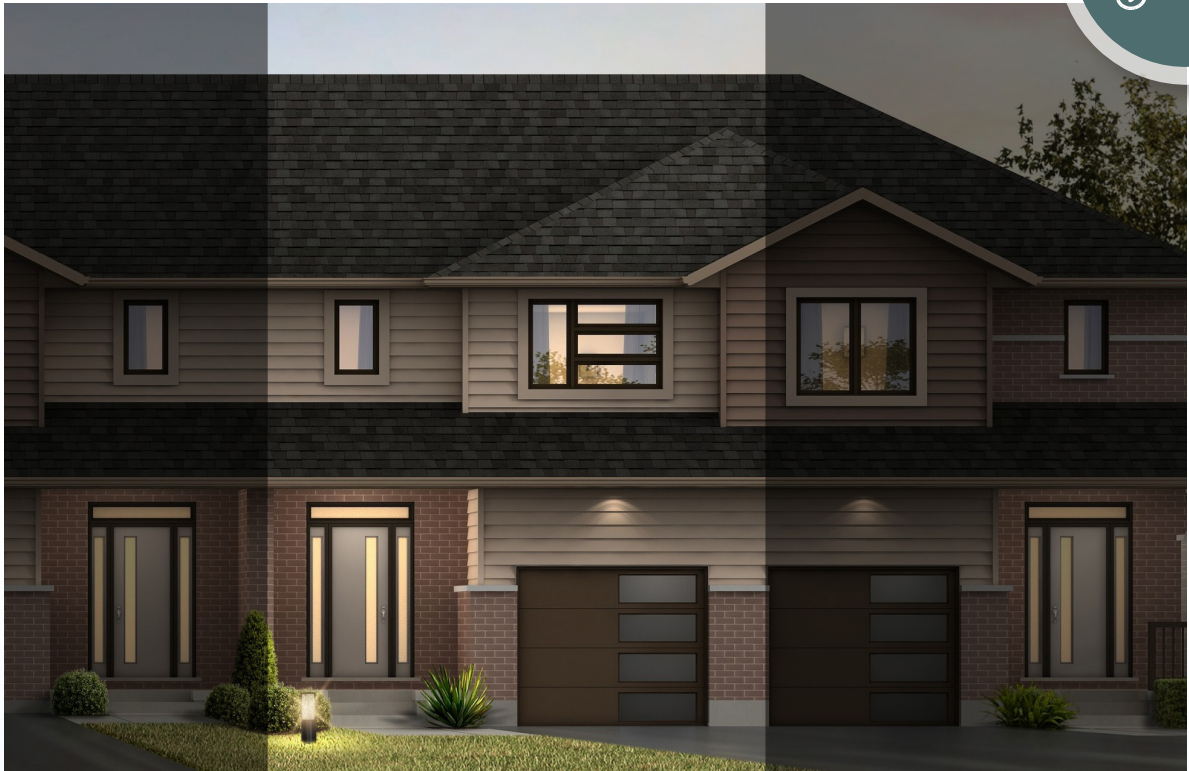


ROLLING MEADOWS

TOWNHOME

66 Woodcock Drive | Tillsonburg ON

ESSENTIAL
SPECS



THE DETAILS

PRICE	\$514,000
CLOSING DATE	Available Now
LOT NUMBER	45E
BEDROOMS	3
BATHS	2.5
GARAGE	1
DRIVEWAY	17'
SQ FT	1,620
MODEL	Shelton

Laura Babcock SALES PROFESSIONAL
519.520.0539 | laura.babcock@hayhoehomes.com



ROLLING MEADOWS

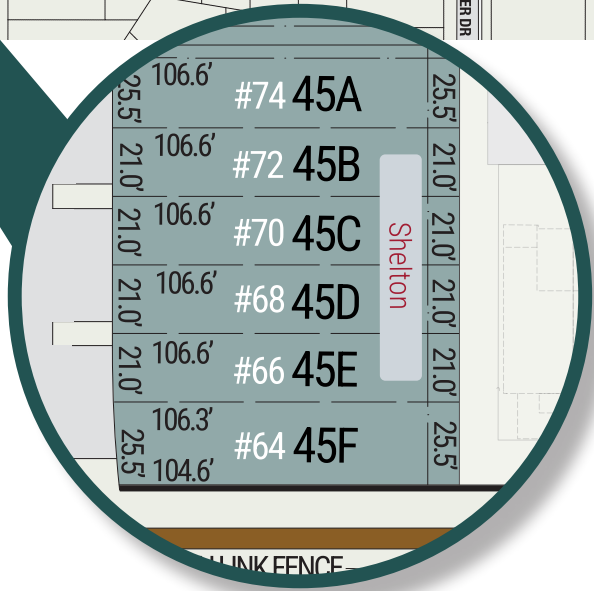
SITE PLAN

66 Woodcock Drive | Tillsonburg ON



exterior features

- KEYLESS ENTRY
- TREATED WOOD DECK
- ASPHALT DRIVEWAY
- WALKING TRAILS



ROLLING MEADOWS

66 Woodcock Drive | Tillsonburg ON

MAIN FLOOR

766 sq ft

features

QUARTZ COUNTERTOPS

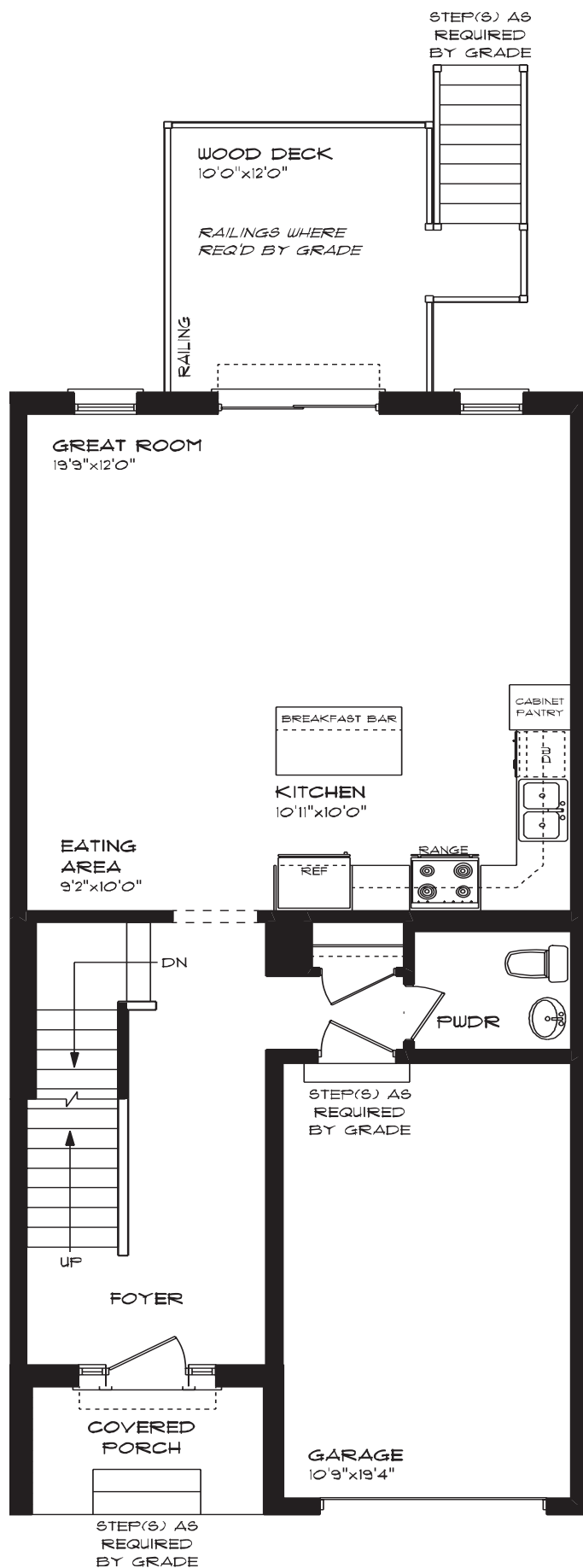
LUXURY VINYL PLANK FLOORING

KITCHEN ISLAND

9' MAIN FLOOR CEILING

SINGLE CAR GARAGE

KITCHEN PANTRY



ROLLING MEADOWS

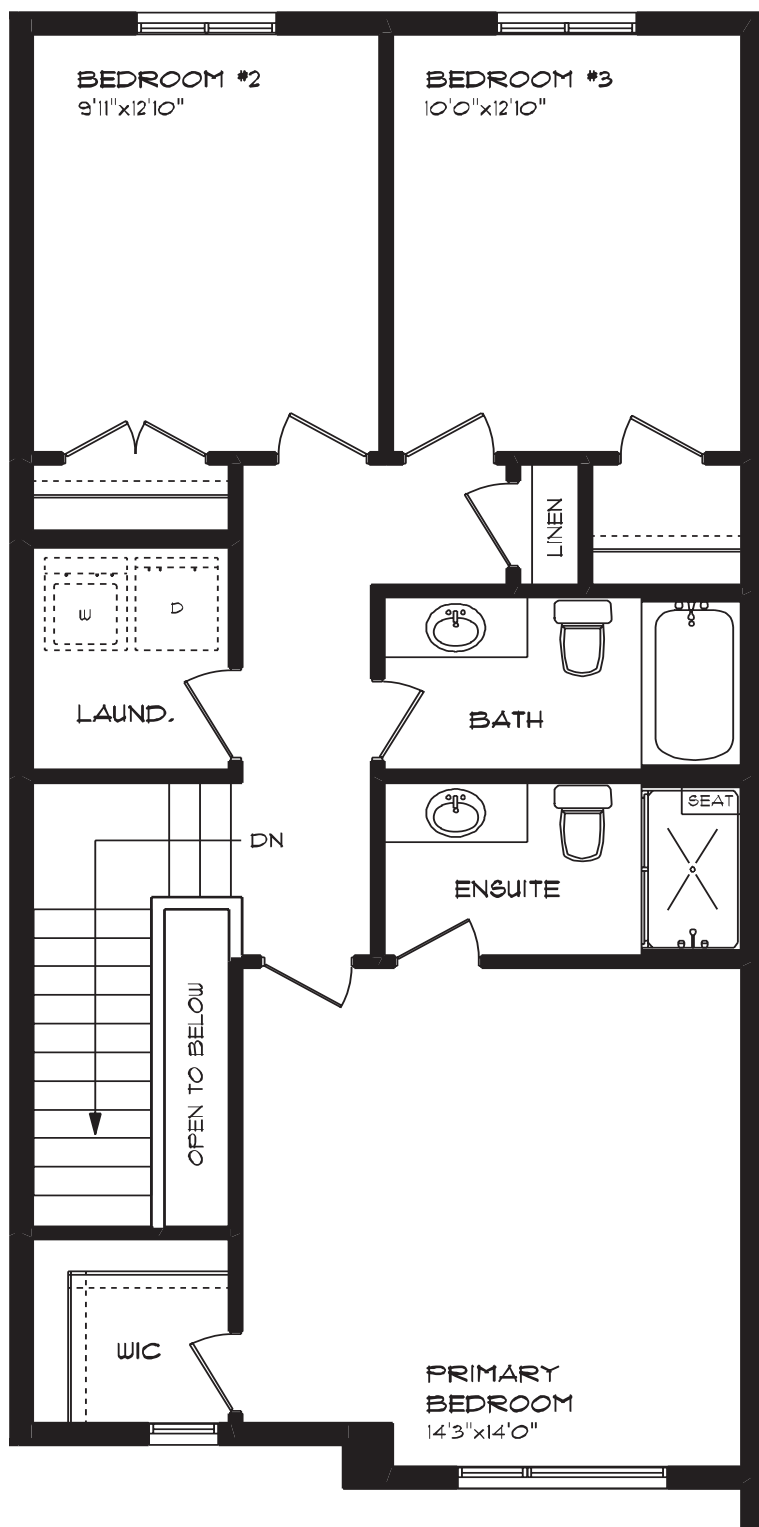
66 Woodcock Drive | Tillsonburg ON

SECOND FLOOR

854 sq ft

features

- PROFESSIONALLY DESIGNED
- LUXURY VINYL PLANK FLOORING
- CARPET FLOORING
- SECOND FLOOR LAUNDRY
- ENSUITE BATH
- WALK-IN CLOSET



ROLLING MEADOWS

66 Woodcock Drive | Tillsonburg ON

LOWER LEVEL

Unfinished

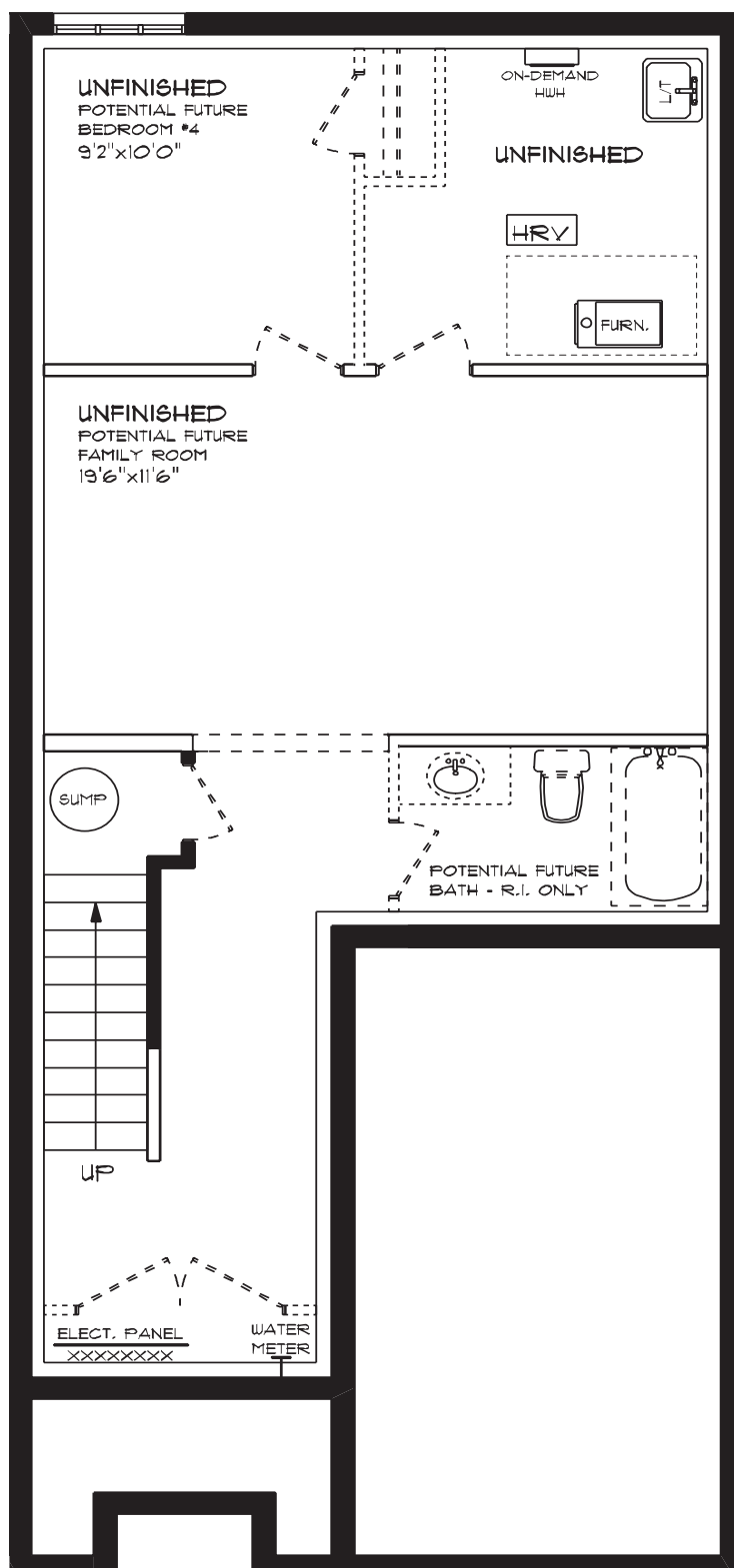
features

AIR CONDITIONING

GAS FURNACE WITH HRV

HUMIDIFIER

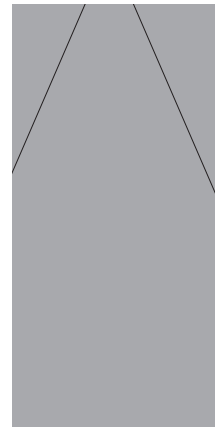
NEW HOME WARRANTY



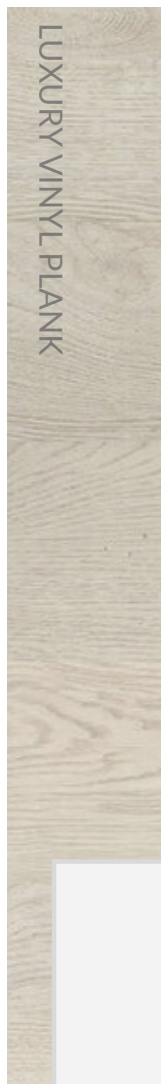
ROLLING MEADOWS

INTERIOR FINISHES

66 Woodcock Drive | Tillsonburg ON



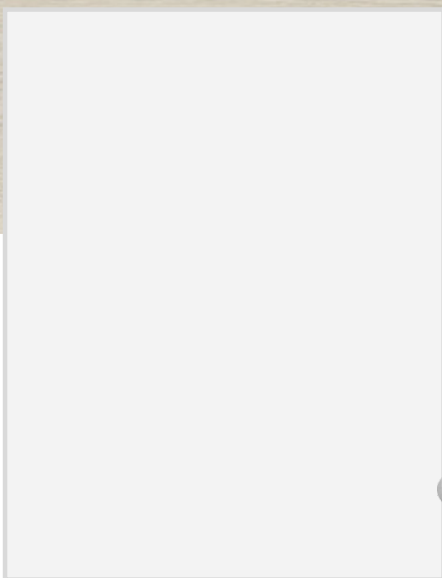
QUARTZ KITCHEN COUNTERTOPS



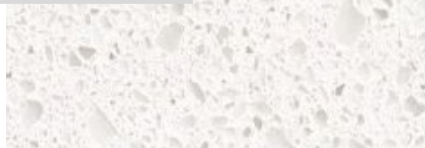
LUXURY VINYL PLANK



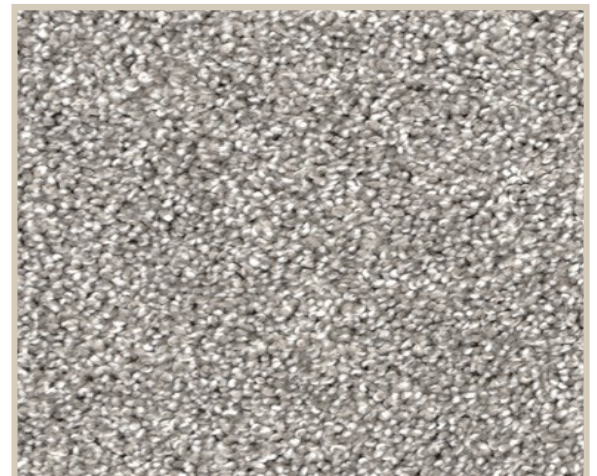
MELAMINE KITCHEN CABINETS



MELAMINE VANITY CABINETS



LAMINATE VANITY COUNTERTOPS



CARPET