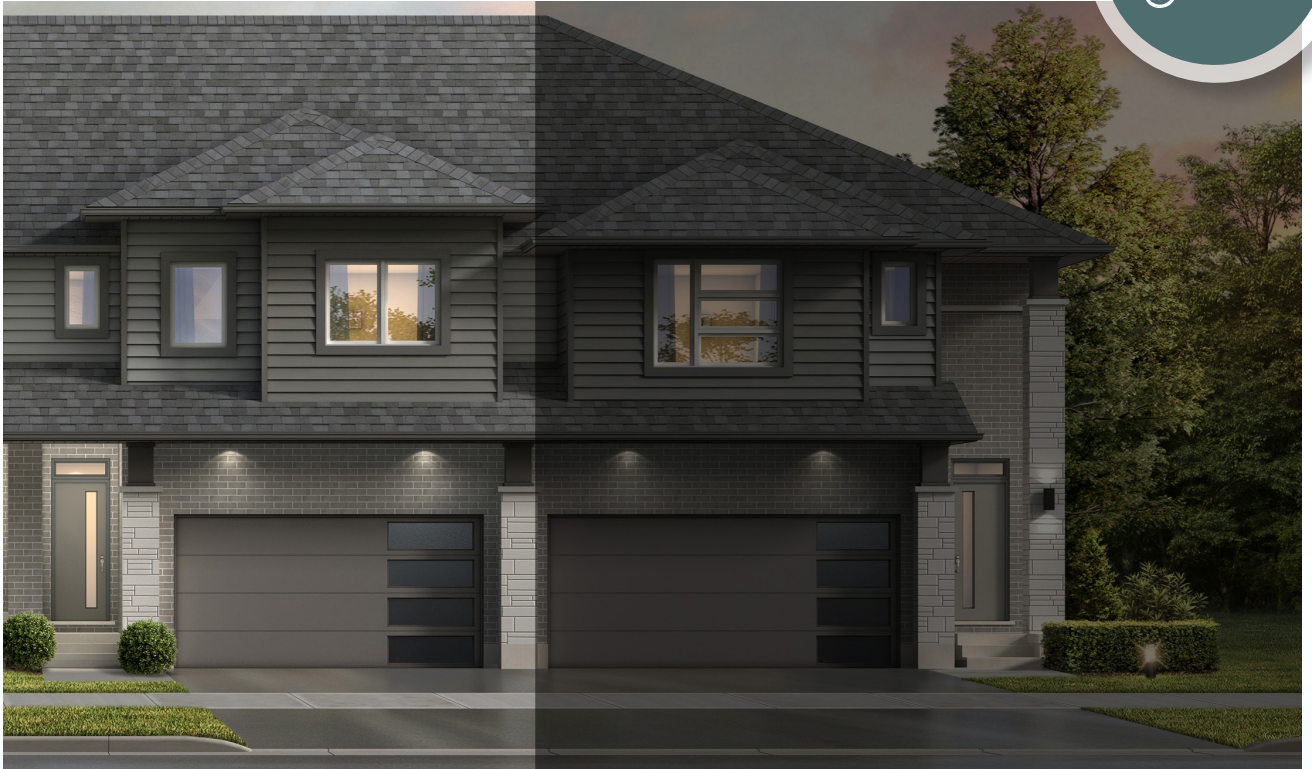


# ROLLING MEADOWS

TOWNHOME

40 Finch Street | Tillsonburg ON

ESSENTIAL  
SPECS



## THE DETAILS

PRICE	\$574,000
CLOSING DATE	June 24, 2026
LOT NUMBER	37C
BEDROOMS	4
BATHS	2.5
GARAGE	2
DRIVEWAY	17'
SQ FT	1,976
MODEL	Clifton

Laura Babcock SALES PROFESSIONAL  
519.520.0539 | [laura.babcock@hayhoehomes.com](mailto:laura.babcock@hayhoehomes.com)



# ROLLING MEADOWS

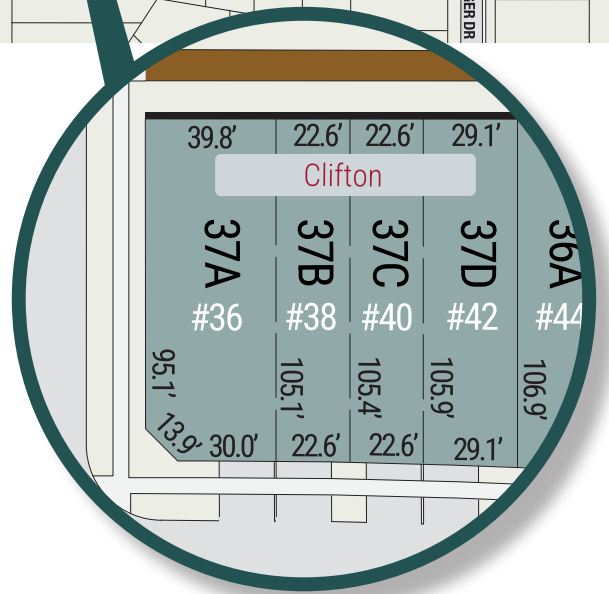
## SITE PLAN

40 Finch Street | Tillsonburg ON



*exterior features*

- KEYLESS ENTRY
- TREATED WOOD DECK
- WALKING TRAILS
- ASPHALT DRIVEWAY



# ROLLING MEADOWS

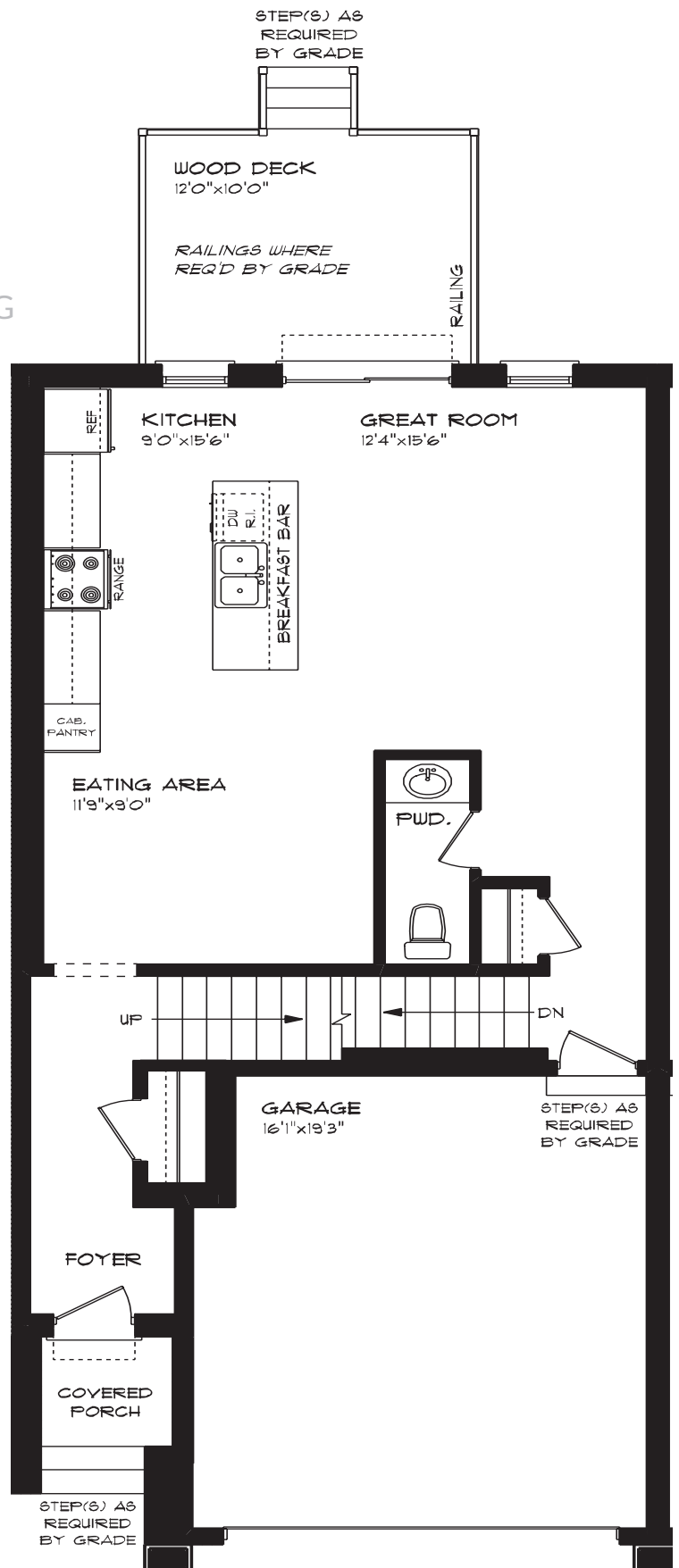
40 Finch Street | Tillsonburg ON

## MAIN FLOOR

757 sq ft

### features

- QUARTZ COUNTERTOPS
- LUXURY VINYL PLANK FLOORING
- KITCHEN ISLAND
- 9' MAIN FLOOR CEILING
- DOUBLE CAR GARAGE
- KITCHEN PANTRY



# ROLLING MEADOWS

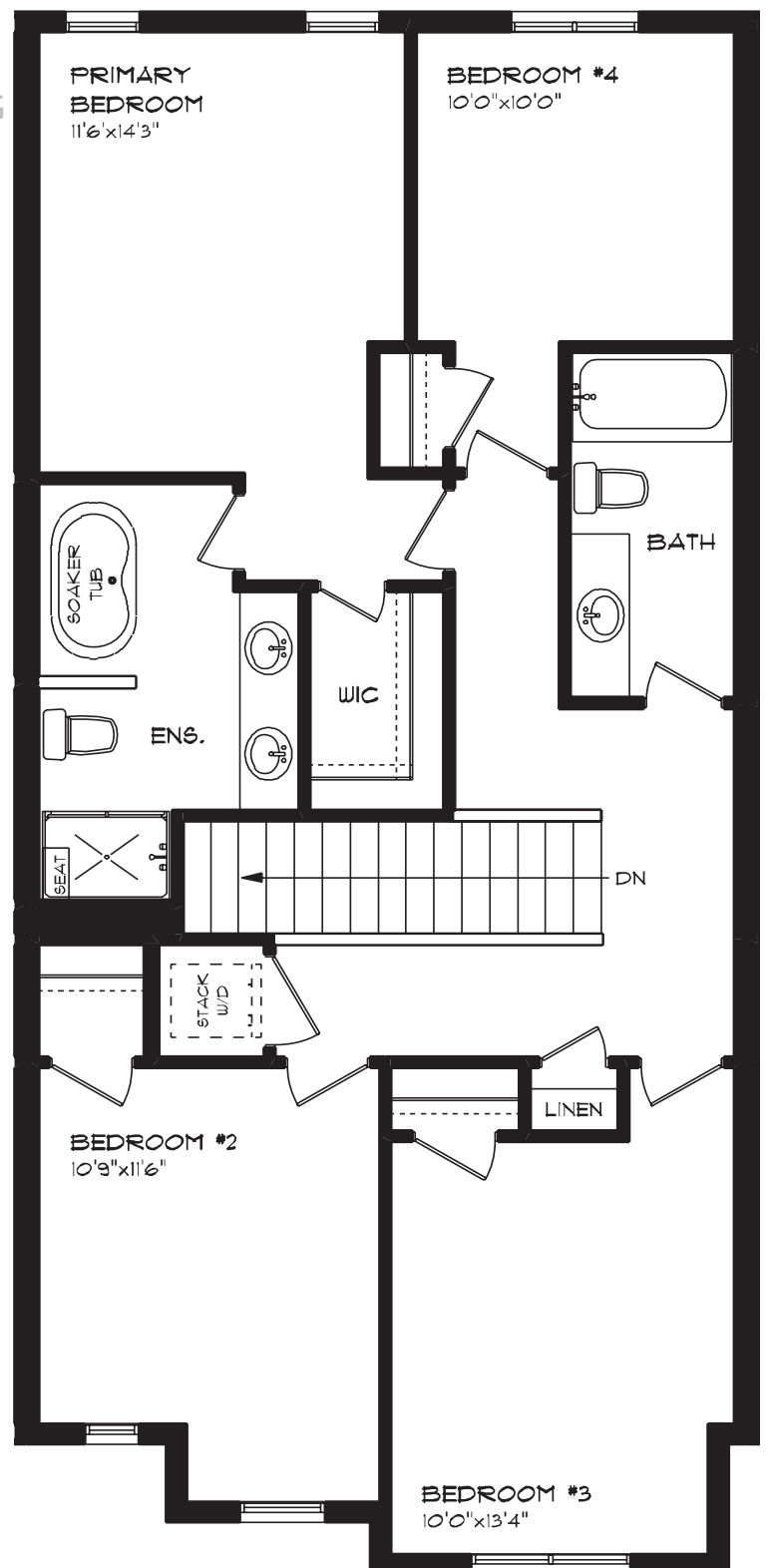
40 Finch Street | Tillsonburg ON

## SECOND FLOOR

1,055 sq ft

### features

- PROFESSIONALLY DESIGNED
- LUXURY VINYL PLANK FLOORING
- CARPET FLOORING
- ENSUITE BATH
- SECOND FLOOR LAUNDRY
- WALK-IN CLOSET



# ROLLING MEADOWS

40 Finch Street | Tillsonburg ON

## LOWER LEVEL

Unfinished

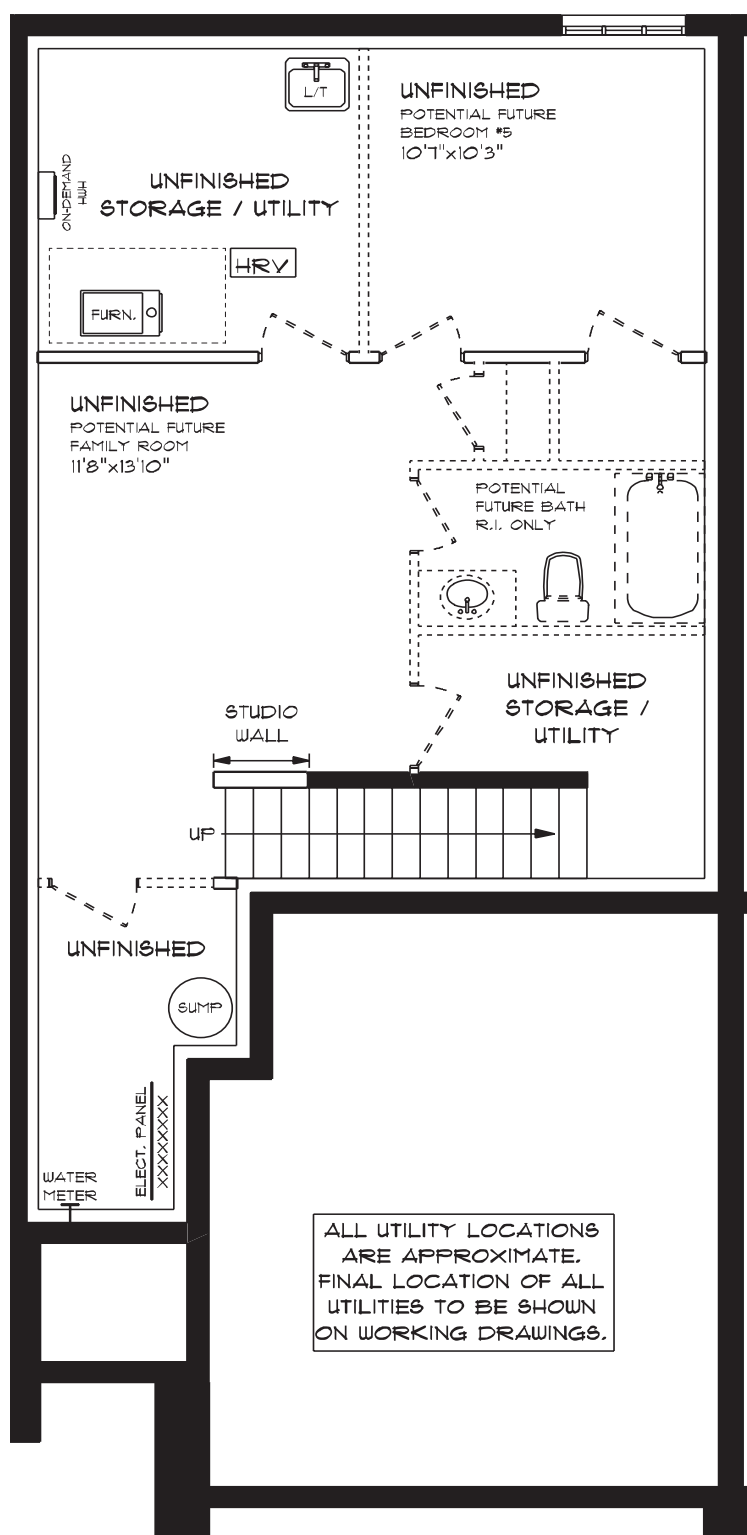
### features

AIR CONDITIONING

GAS FURNACE WITH HRV

HUMIDIFIER

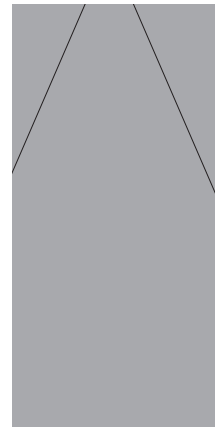
NEW HOME WARRANTY



# ROLLING MEADOWS

40 Finch Street | Tillsonburg ON

## INTERIOR FINISHES

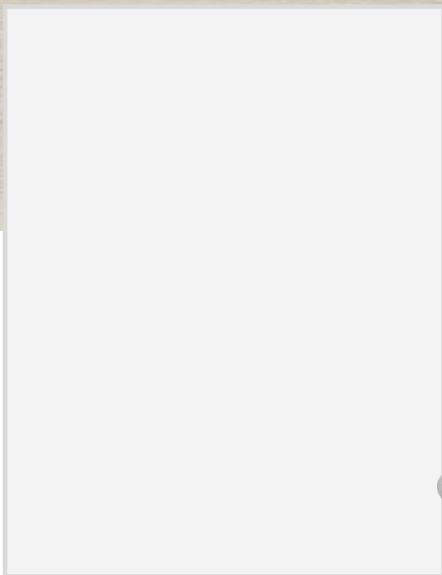


QUARTZ KITCHEN COUNTERTOPS

LUXURY VINYL PLANK



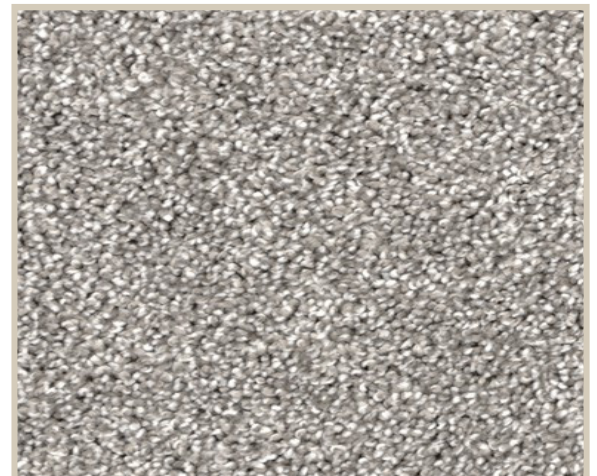
MELAMINE KITCHEN CABINETS



MELAMINE VANITY CABINETS



LAMINATE VANITY COUNTERTOPS



CARPET