

# ROLLING MEADOWS

TOWNHOME

16 Finch Street | Tillsonburg ON

ESSENTIAL  
SPECS



## THE DETAILS

PRICE	\$534,000
CLOSING DATE	Available Now
LOT NUMBER	42F
BEDROOMS	2
BATHS	2
GARAGE	1
DRIVEWAY	11'5"
SQ FT	1,225
MODEL	Arbor

Laura Babcock SALES PROFESSIONAL  
519.520.0539 | [laura.babcock@hayhoehomes.com](mailto:laura.babcock@hayhoehomes.com)



[WWW.HAYHOEHOMES.COM](http://WWW.HAYHOEHOMES.COM)

Price, products, colours & features are subject to change without notice. E. & O. E. JUNE 3, 2025

HAYHOE™  
HOMES

# ROLLING MEADOWS

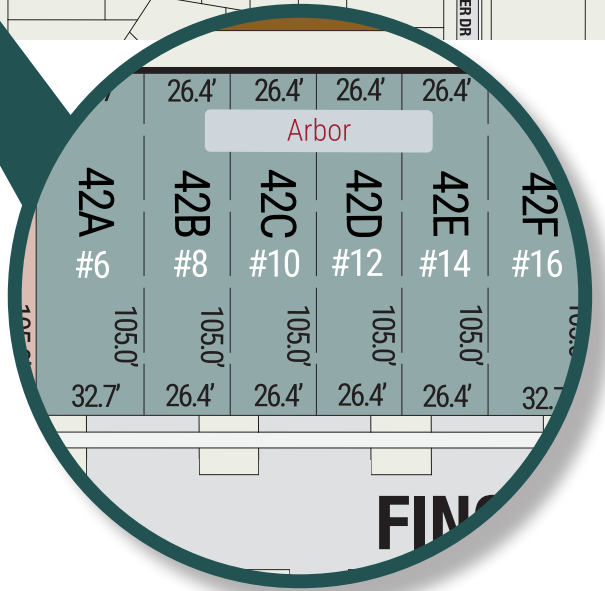
## SITE PLAN

16 Finch Street | Tillsonburg ON



*exterior features*

- KEYLESS ENTRY
- TREATED WOOD DECK
- BBQ GAS LINE
- ASPHALT DRIVEWAY
- WALKING TRAILS



# ROLLING MEADOWS

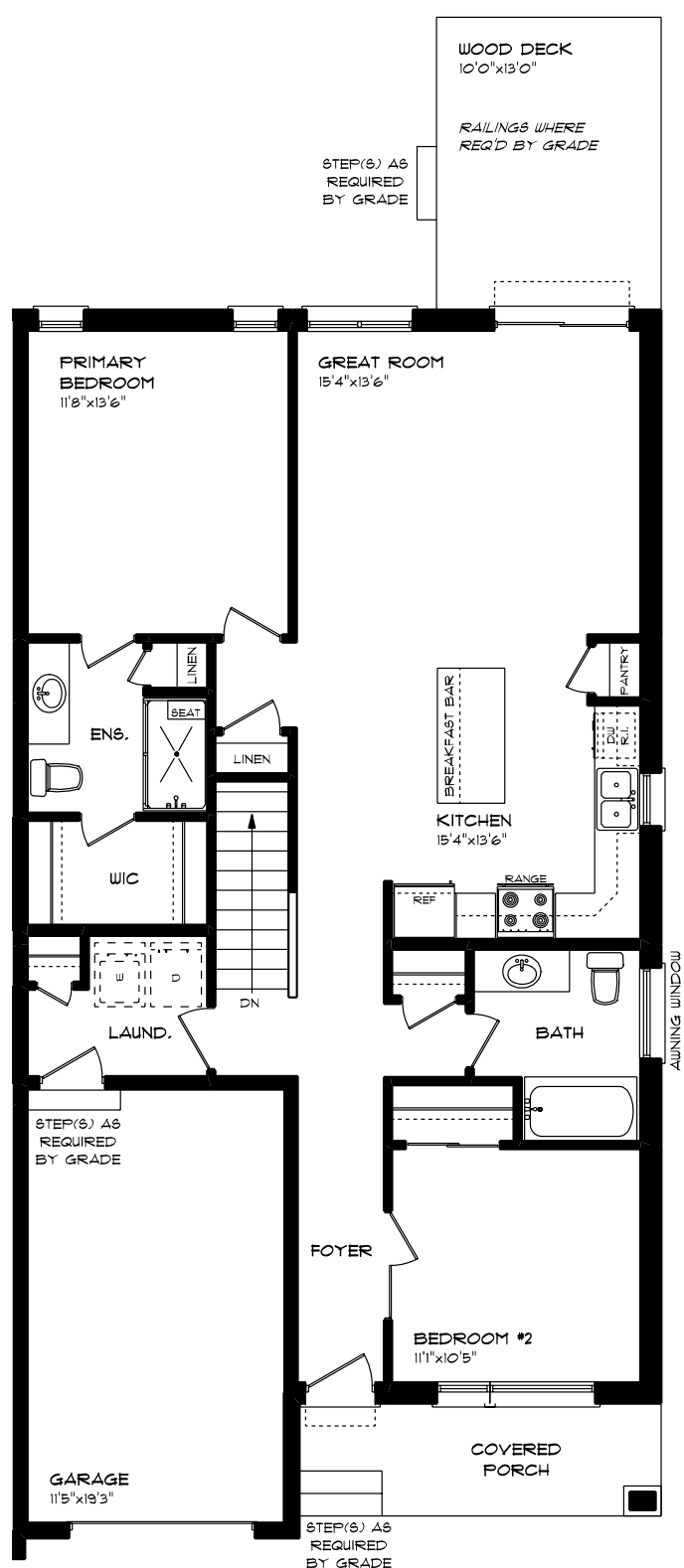
16 Finch Street | Tillsonburg ON

## MAIN FLOOR

1,225 sq ft

### features

- QUARTZ COUNTERTOPS
- PAINTED KITCHEN BACKSPLASH
- LUXURY VINYL PLANK FLOORING
- KITCHEN ISLAND
- 9' MAIN FLOOR CEILING
- SINGLE CAR GARAGE
- KITCHEN PANTRY



# ROLLING MEADOWS

16 Finch Street | Tillsonburg ON

## LOWER LEVEL

Unfinished

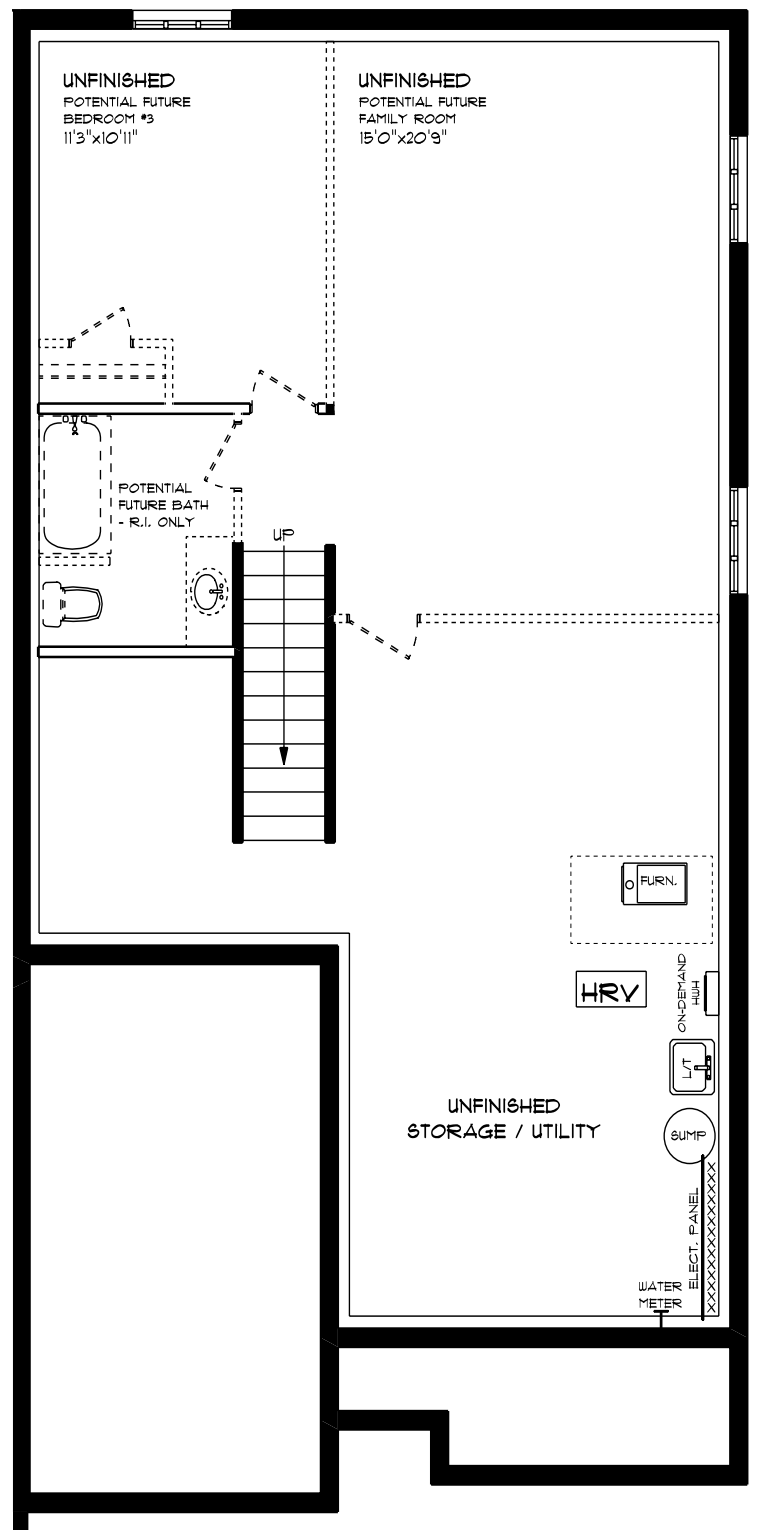
### features

AIR CONDITIONING

GAS FURNACE WITH HRV

HUMIDIFIER

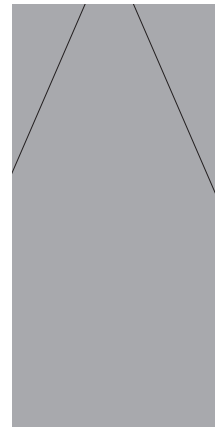
NEW HOME WARRANTY



# ROLLING MEADOWS

16 Finch Street | Tillsonburg ON

## INTERIOR FINISHES

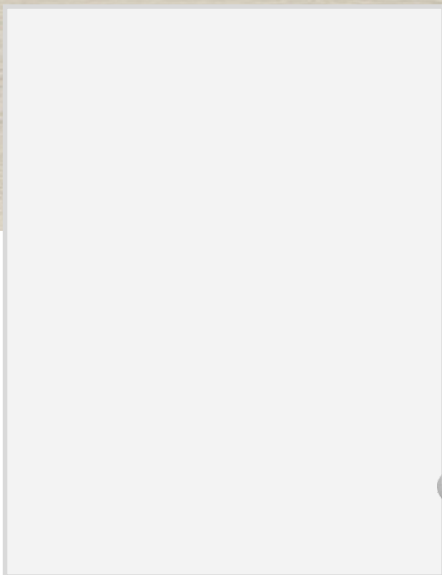


QUARTZ KITCHEN COUNTERTOPS

LUXURY VINYL PLANK



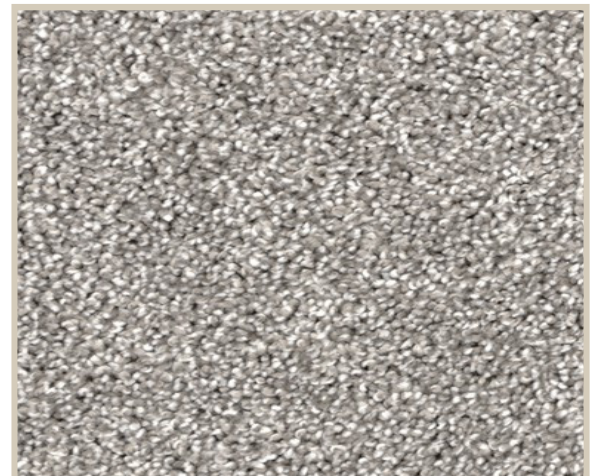
MELAMINE KITCHEN CABINETS



MELAMINE VANITY CABINETS



LAMINATE VANITY COUNTERTOPS



CARPET