

ROLLING MEADOWS

TOWNHOME

38 Finch Street | Tillsonburg ON

ESSENTIAL
SPECS



THE DETAILS

PRICE	\$564,000
CLOSING DATE	June 23, 2026
LOT NUMBER	37B
BEDROOMS	4
BATHS	2.5
GARAGE	2
DRIVEWAY	17'
SQ FT	1,812
MODEL	Clifton

Laura Babcock SALES PROFESSIONAL
519.520.0539 | laura.babcock@hayhoehomes.com



ROLLING MEADOWS

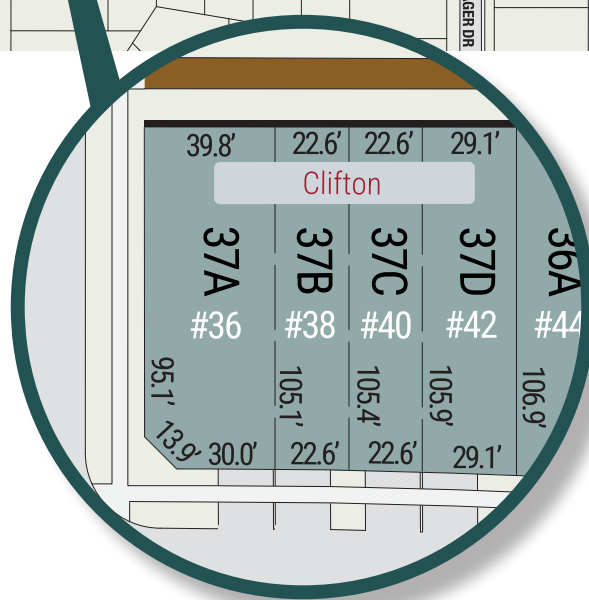
SITE PLAN

38 Finch Street | Tillsonburg ON



exterior features

- KEYLESS ENTRY
- TREATED WOOD DECK
- WALKING TRAILS
- ASPHALT DRIVEWAY



ROLLING MEADOWS

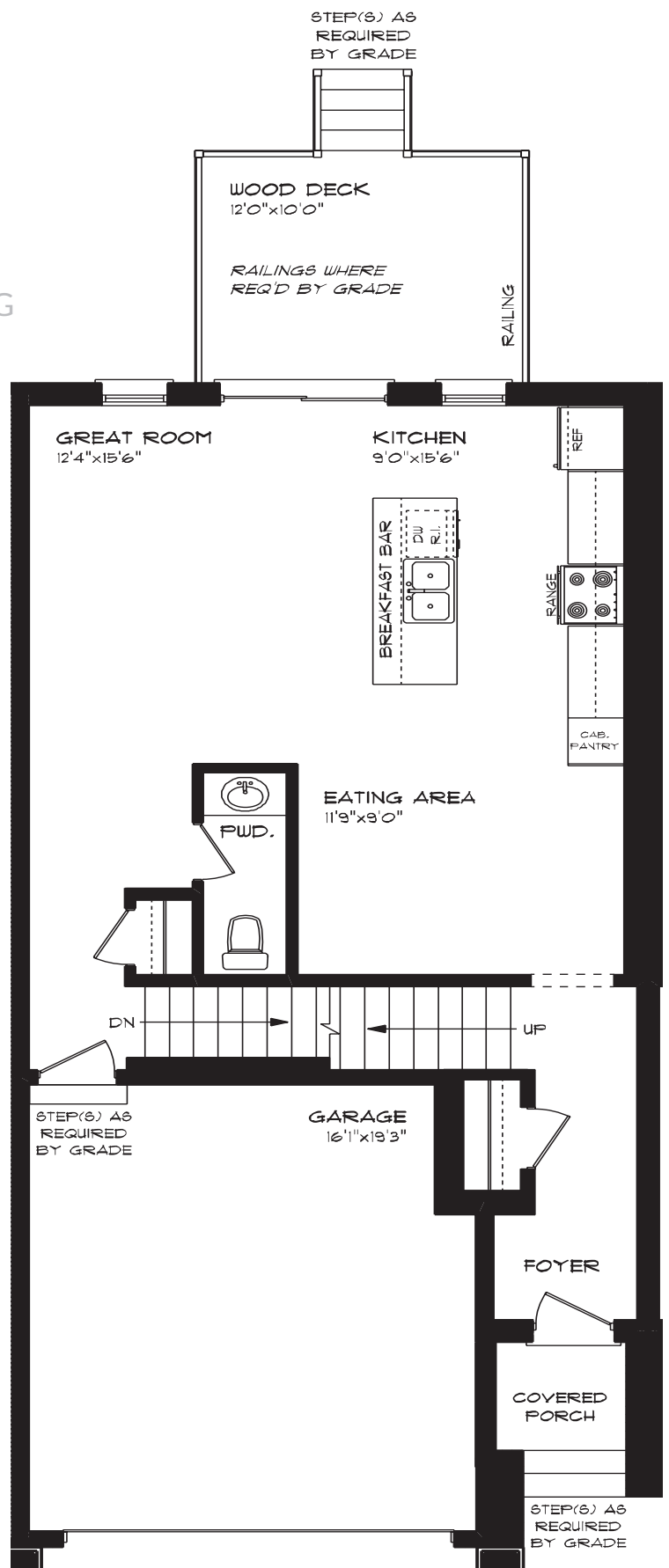
38 Finch Street | Tillsonburg ON

MAIN FLOOR

757 sq ft

features

- QUARTZ COUNTERTOPS
- LUXURY VINYL PLANK FLOORING
- KITCHEN ISLAND
- 8' MAIN FLOOR CEILING
- DOUBLE CAR GARAGE
- KITCHEN PANTRY



ROLLING MEADOWS

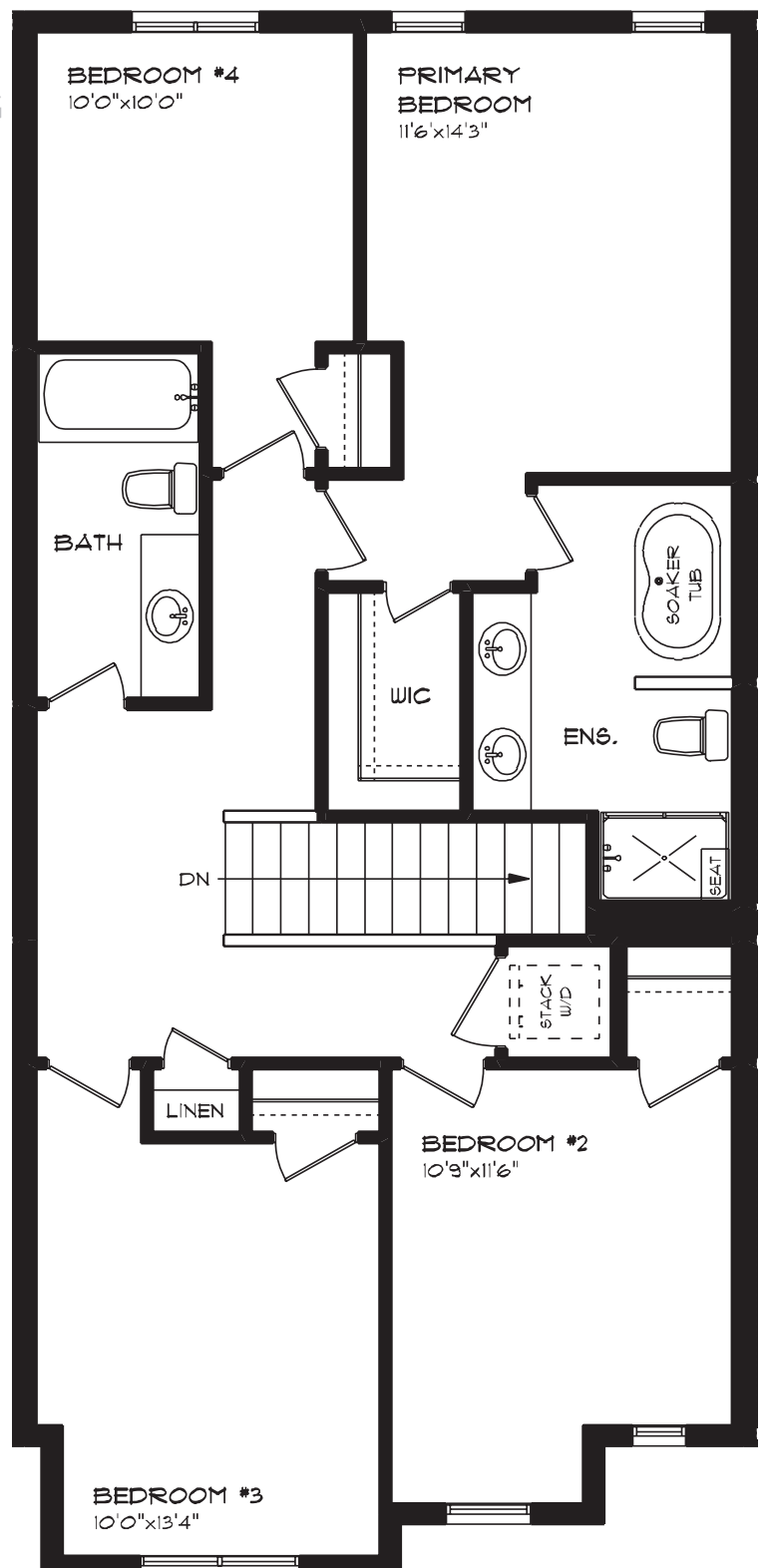
38 Finch Street | Tillsonburg ON

SECOND FLOOR

1,055 sq ft

features

- PROFESSIONALLY DESIGNED
- LUXURY VINYL PLANK FLOORING
- CARPET FLOORING
- ENSUITE BATH
- SECOND FLOOR LAUNDRY
- WALK-IN CLOSET



ROLLING MEADOWS

38 Finch Street | Tillsonburg ON

LOWER LEVEL

Unfinished

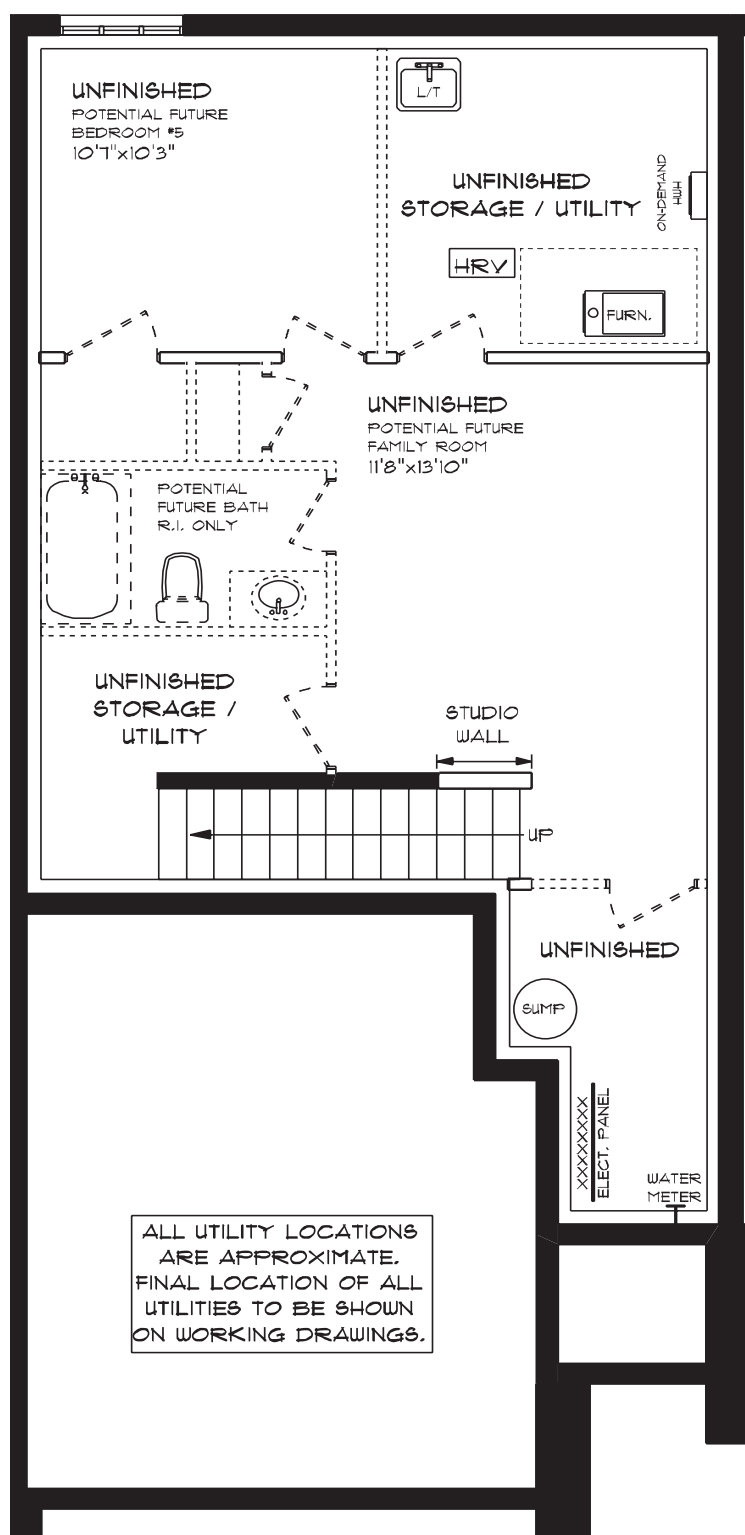
features

AIR CONDITIONING

GAS FURNACE WITH HRV

HUMIDIFIER

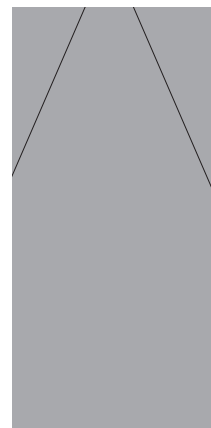
NEW HOME WARRANTY



ROLLING MEADOWS

38 Finch Street | Tillsonburg ON

INTERIOR FINISHES

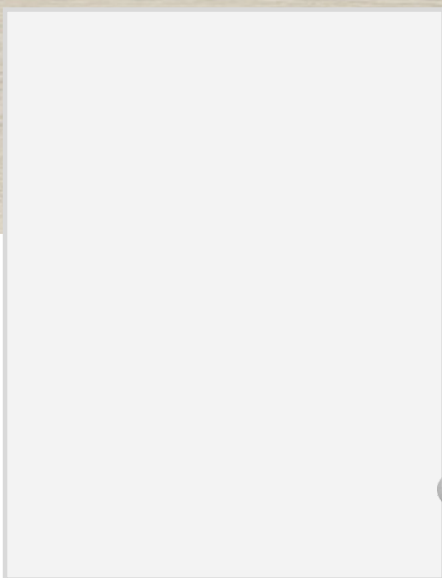


QUARTZ KITCHEN COUNTERTOPS

LUXURY VINYL PLANK



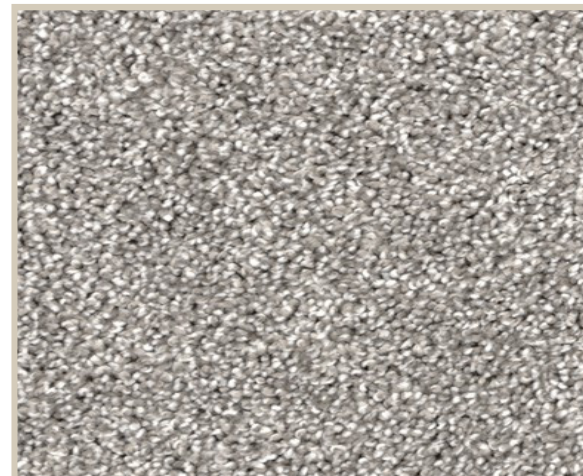
MELAMINE KITCHEN CABINETS



MELAMINE VANITY CABINETS



LAMINATE VANITY COUNTERTOPS



CARPET