

ROLLING MEADOWS

TOWNHOME

6 Finch Street | Tillsonburg ON



THE DETAILS

PRICE	\$534,000
CLOSING DATE	Available Now
LOT NUMBER	42A
BEDROOMS	2
BATHS	2
GARAGE	1
DRIVEWAY	11'5"
SQ FT	1,225
MODEL	Arbor

Laura Babcock SALES PROFESSIONAL

519.520.0539 | laura.babcock@hayhoehomes.com



ROLLING MEADOWS

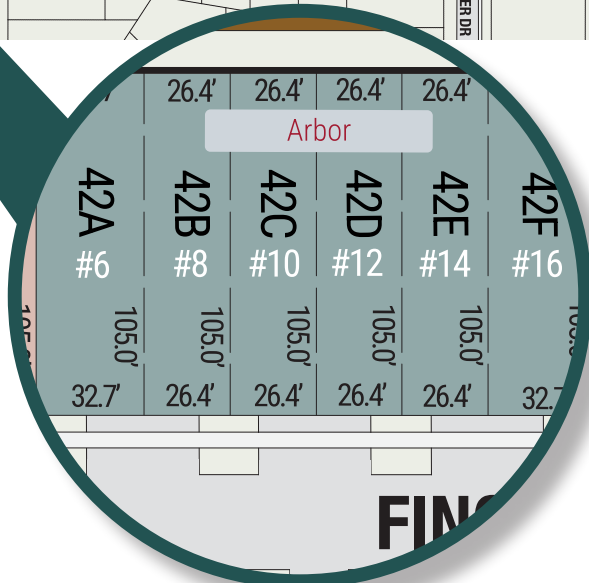
SITE PLAN

6 Finch Street | Tillsonburg ON



exterior features

- KEYLESS ENTRY
- TREATED WOOD DECK
- BBQ GAS LINE
- ASPHALT DRIVEWAY
- WALKING TRAILS



ROLLING MEADOWS

6 Finch Street | Tillsonburg ON

MAIN FLOOR

1,225 sq ft

features

QUARTZ COUNTERTOPS

PAINTED KITCHEN BACKSPLASH

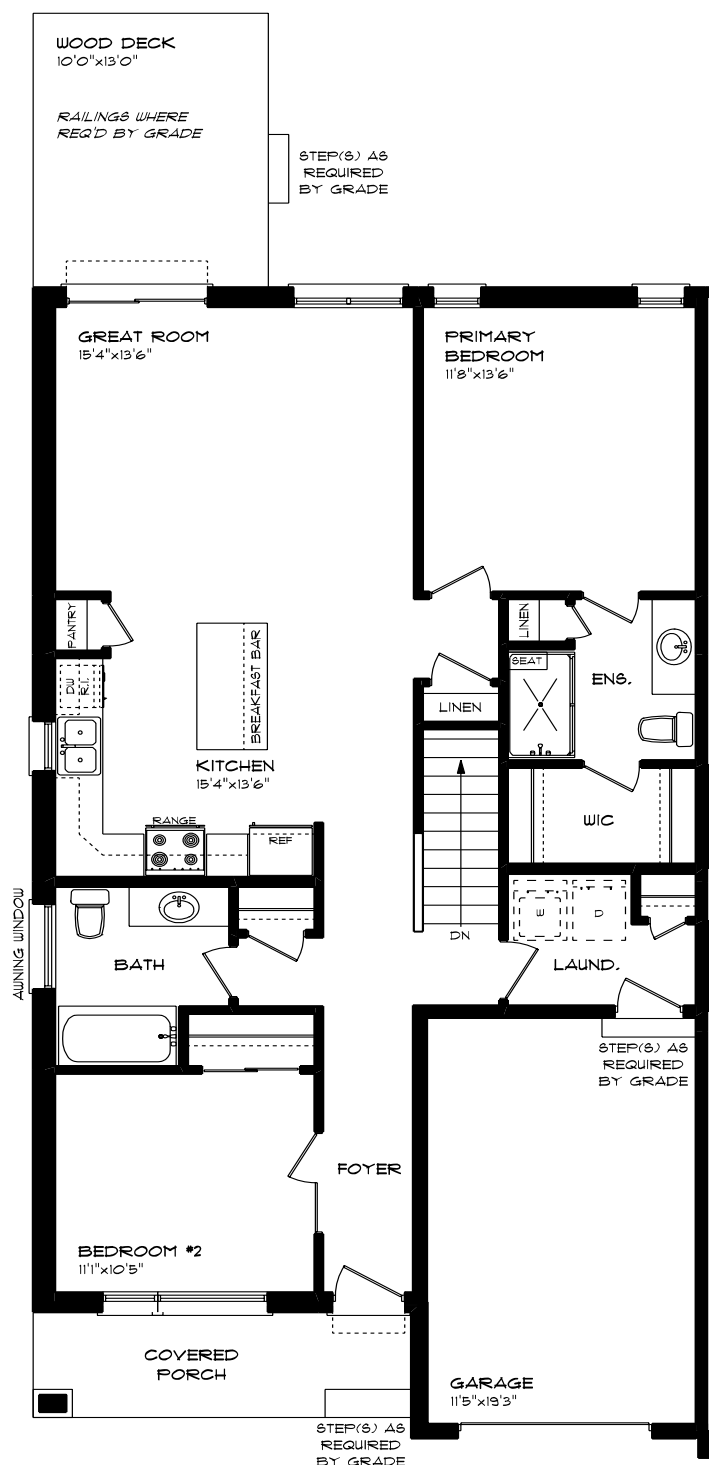
LUXURY VINYL PLANK FLOORING

KITCHEN ISLAND

9' MAIN FLOOR CEILING

SINGLE CAR GARAGE

KITCHEN PANTRY



ROLLING MEADOWS

6 Finch Street | Tillsonburg ON

LOWER LEVEL

Unfinished

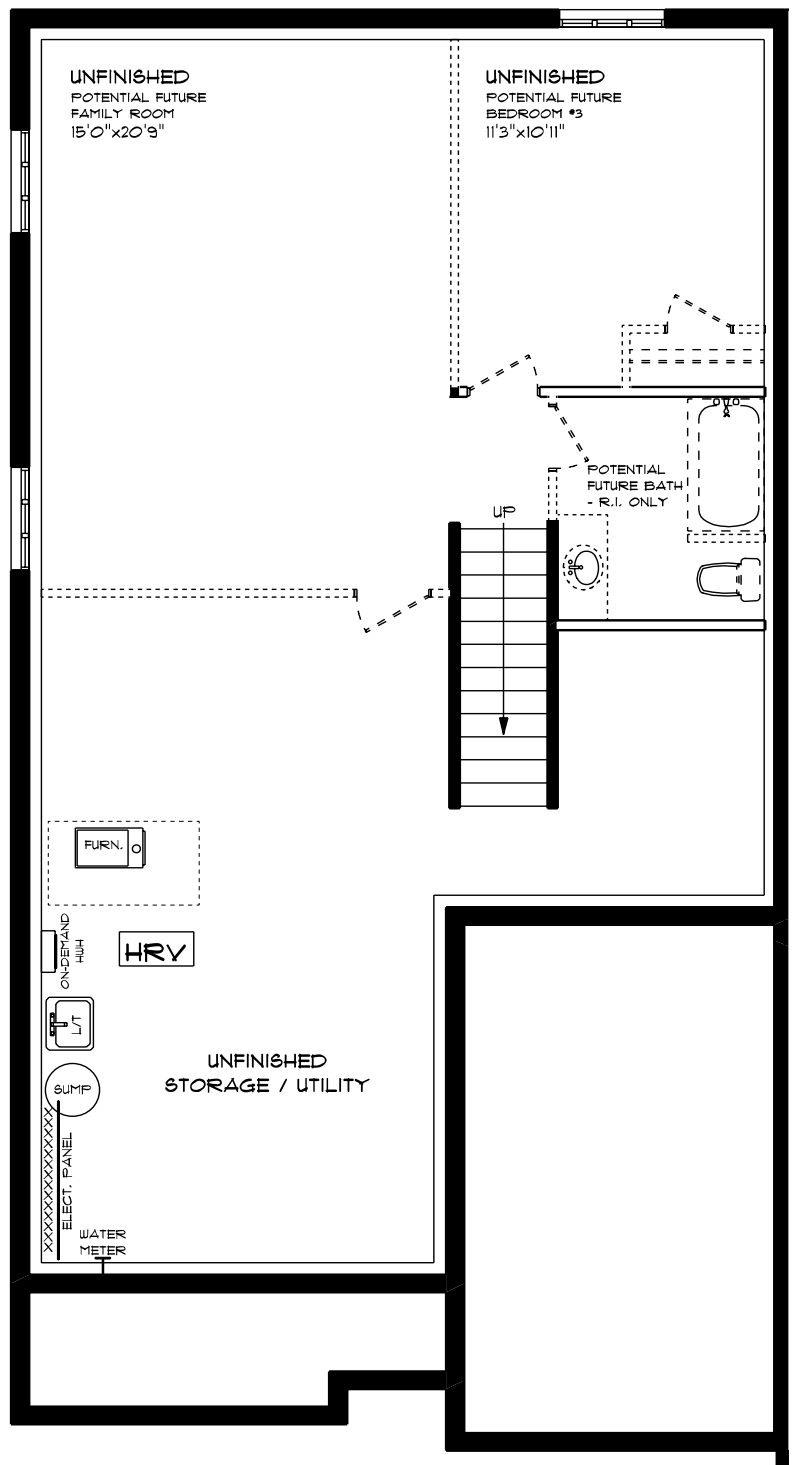
features

AIR CONDITIONING

GAS FURNACE WITH HRV

HUMIDIFIER

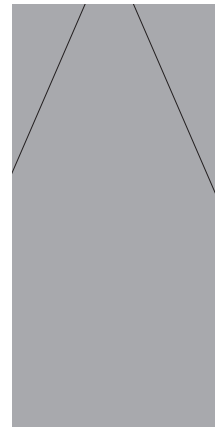
NEW HOME WARRANTY



ROLLING MEADOWS

6 Finch Street | Tillsonburg ON

INTERIOR FINISHES

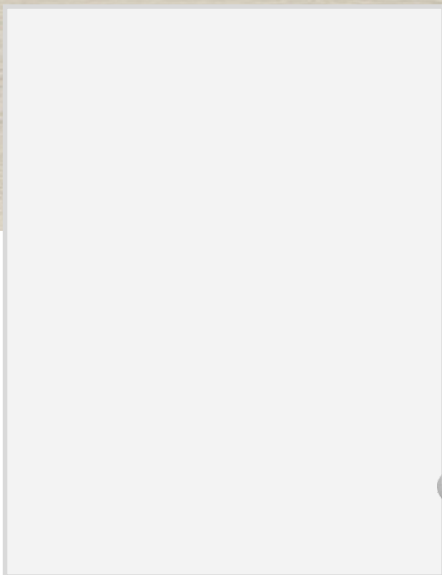


QUARTZ KITCHEN COUNTERTOPS

LUXURY VINYL PLANK



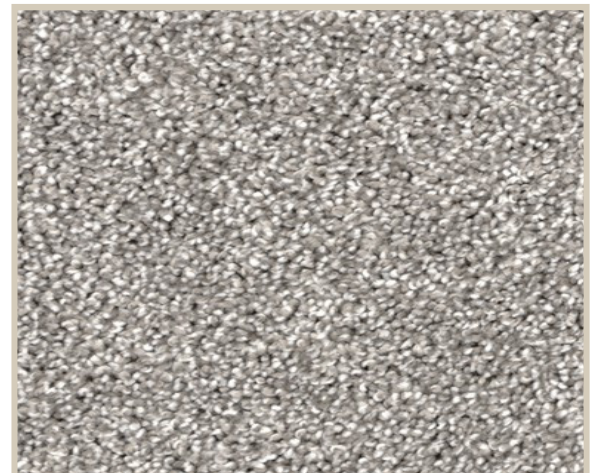
MELAMINE KITCHEN CABINETS



MELAMINE VANITY CABINETS



LAMINATE VANITY COUNTERTOPS



CARPET