

# LYNHURST *Heights*



12 THOMAS CT ST. THOMAS | ON

## THE DETAILS

PRICE	\$660,000
CLOSING DATE	December 9, 2026
LOT NUMBER	19B
BEDROOMS	4
BATHS	2.5
GARAGE	1
DRIVEWAY	17'
SQ FT	1,921
MODEL	Semi-Detached

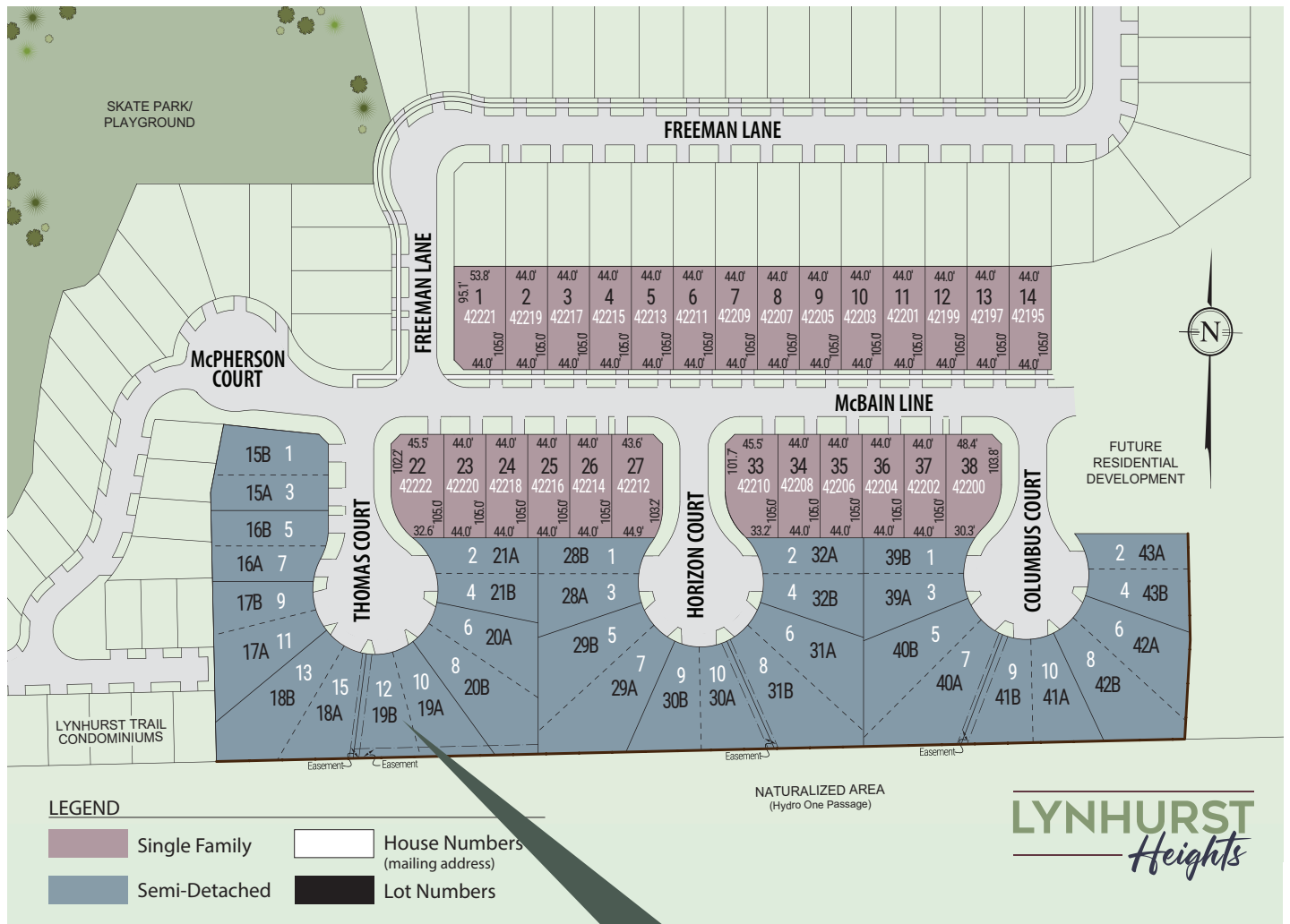
Dave Matthews SALES PROFESSIONAL  
519.633.9215 | dave.matthews@hayhoehomes.com



# LYNHURST *Heights*

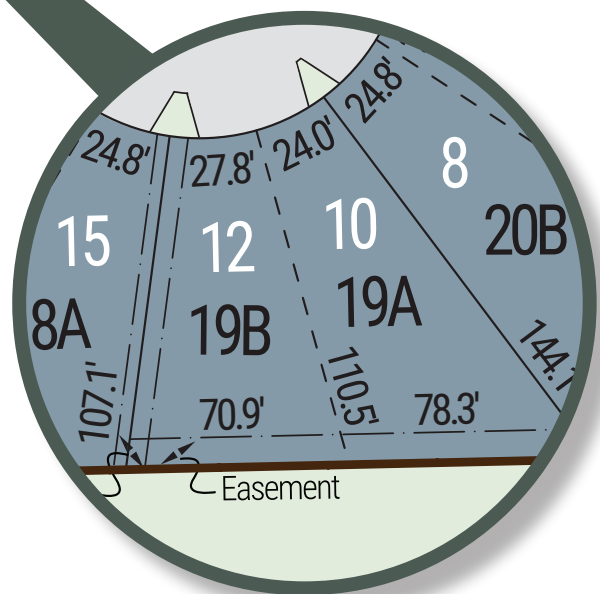
## SITE PLAN

12 Thomas Court | ST. THOMAS | ONTARIO



### *exterior features*

- KEYLESS ENTRY
- TREATED WOOD DECK
- ASPHALT DRIVEWAY
- WALKING TRAILS



# LYNHURST *Heights*

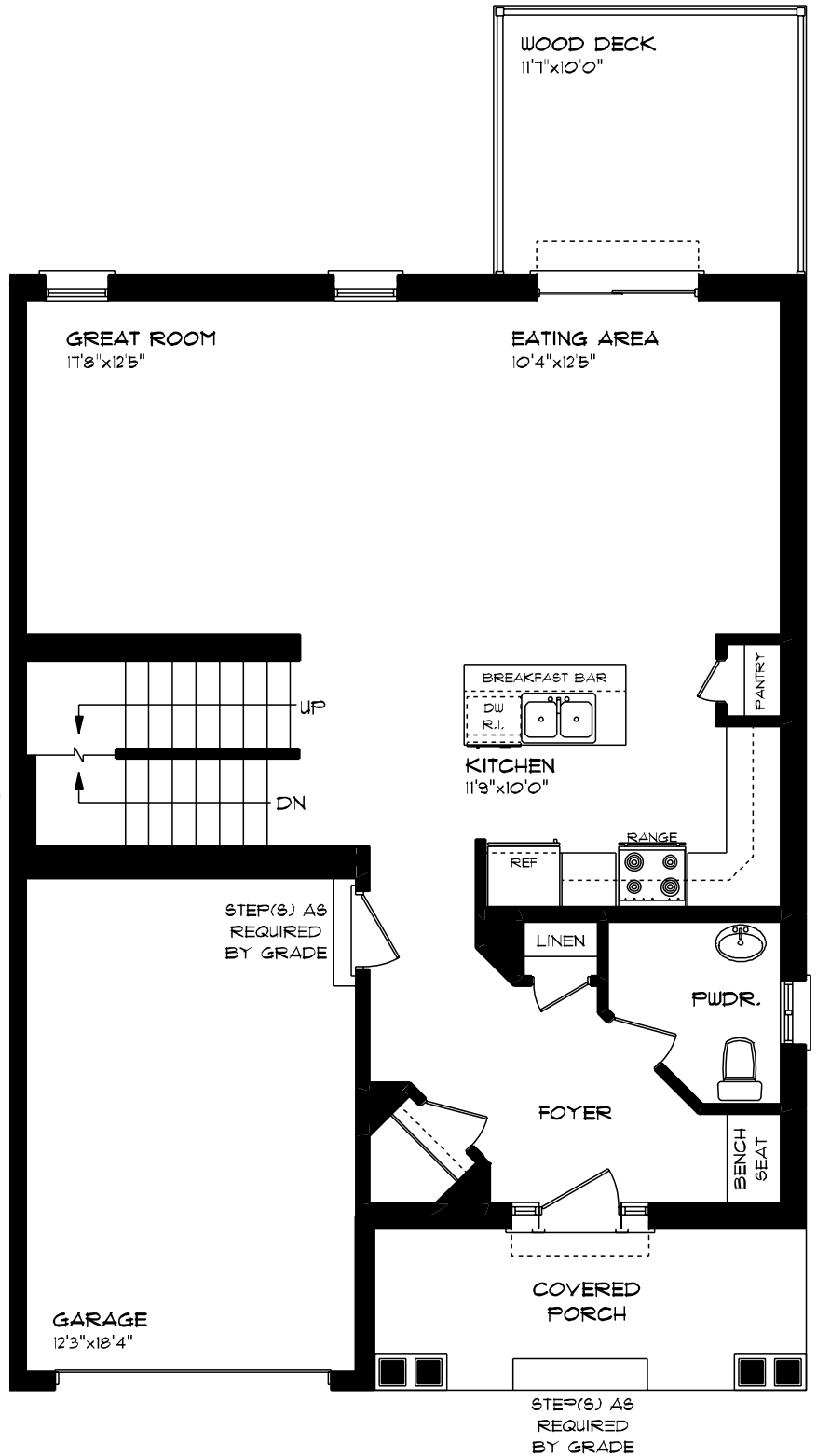
12 Thomas Court | ST. THOMAS | ONTARIO

## MAIN FLOOR

873 sq ft

### *features*

- QUARTZ COUNTERTOPS
- UNDERMOUNT SINK
- KITCHEN BACKSPLASH
- KITCHEN ISLAND
- LUXURY VINYL FLOORING
- SINGLE CAR GARAGE
- PROFESSIONALLY DESIGNED



# LYNHURST *Heights*

12 Thomas Court | ST. THOMAS | ONTARIO

## SECOND FLOOR

1,048 sq ft

### *features*

PROFESSIONALLY DESIGNED

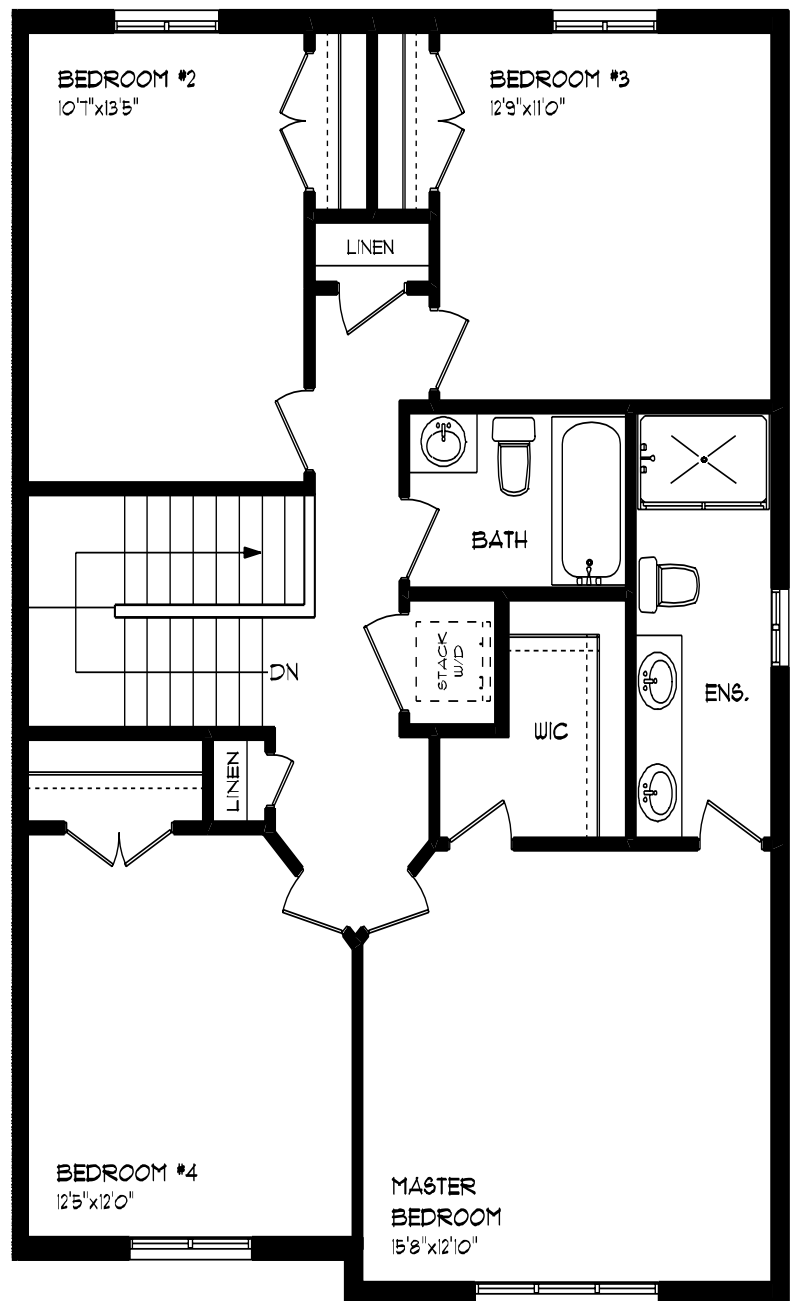
CARPET FLOORING

LUXURY VINYL PLANK FLOORING

WALK-IN CLOSET

SECOND FLOOR LAUNDRY

DOUBLE ENSUITE VANITY



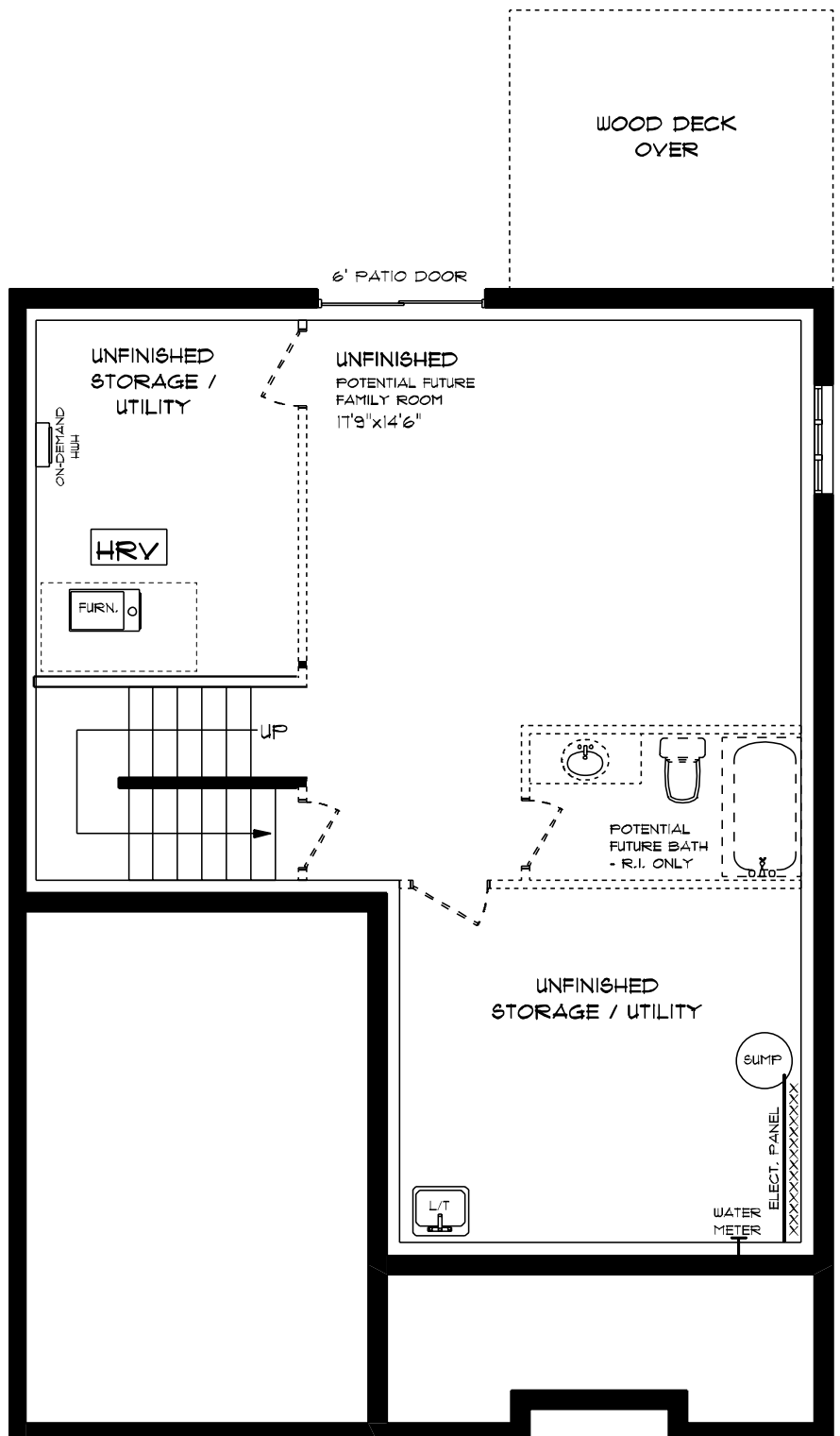
# LYNHURST *Heights*

12 Thomas Court | ST. THOMAS | ONTARIO

## LOWER LEVEL UNFINISHED

### *features*

- AIR CONDITIONING
- GAS FURNACE WITH HRV
- HUMIDIFIER
- NEW HOME WARRANTY
- TANKLESS HWH



# LYNHURST *Heights*

## INTERIOR FINISHES

12 Thomas Court | ST. THOMAS | ONTARIO



PAINTED KITCHEN CABINETS



KITCHEN BACKSPLASH



UPPERS, TALLS, ISLAND

LUXURY VINYL PLANK FLOORING

PERIMETER LOWERS



WALL COLOUR

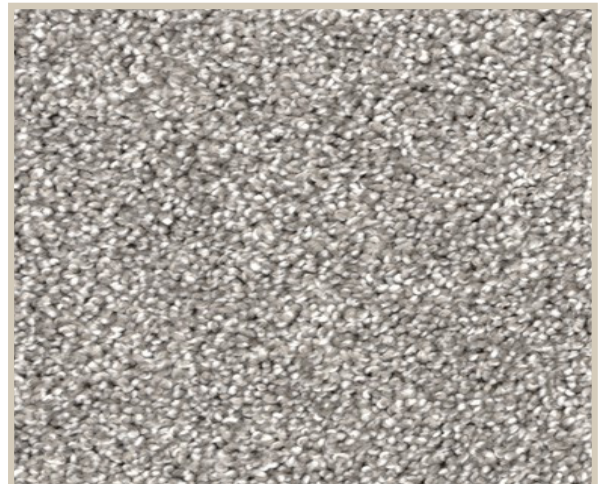
QUARTZ KITCHEN COUNTERTOPS



PAINTED VANITY CABINETS



LAMINATE VANITY COUNTERTOPS



CARPET