



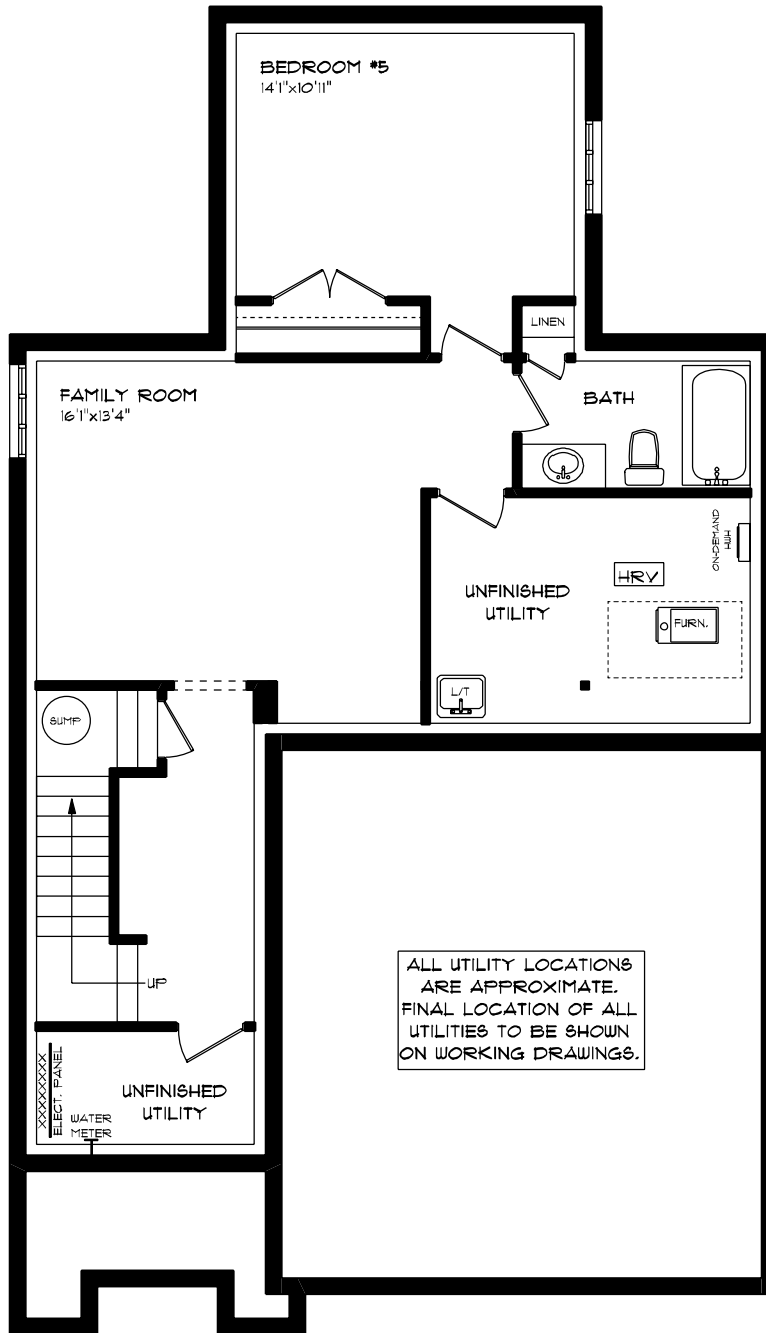
VERMONT

INVENTORY HOME
ROLLING MEADOWS
LOT 18 / HOUSE #3 FINCH ST.

HAYHOE™
HOMES
CREATED JUN 6, 2025

FRONT ELEVATION - APPROX. 2,546 TOTAL SQ. FT.

This plan is the property of Hayhoe Homes and any reproduction of this plan, its concepts or ideas, is strictly prohibited. Plans and specifications are approximate and are subject to change without notice. Finished area and room dimensions will change depending on front elevation selection. E.A.O.E. Copyright 2025.



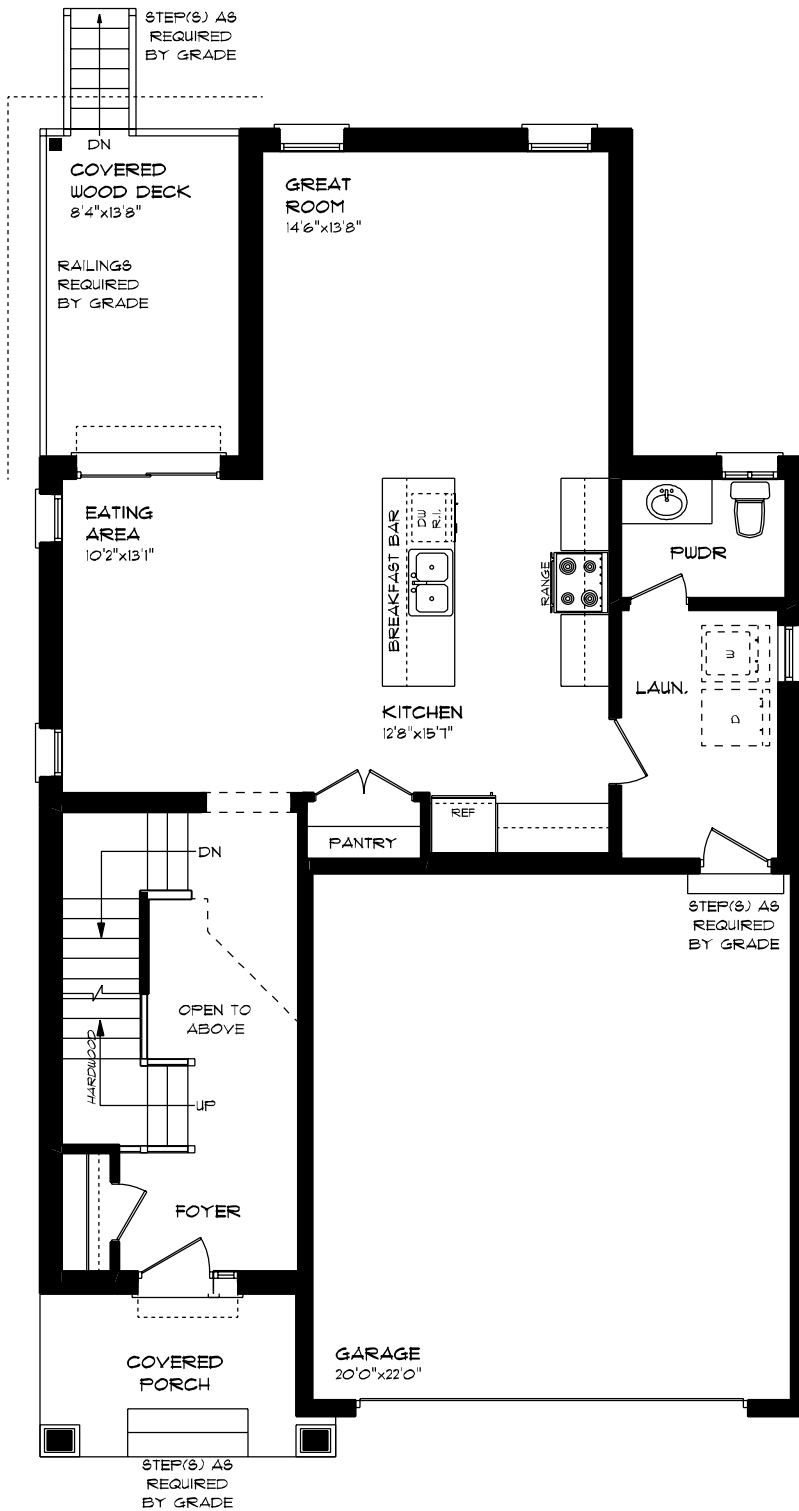
VERMONT

INVENTORY HOME
 ROLLING MEADOWS
 LOT 18 / HOUSE #9 FINCH ST.

LOWER LEVEL - APPROX. 623 SQ. FT.



This plan is the property of Hayhoe Homes and any reproduction of this plan, its concepts or ideas, is strictly prohibited. Plans and specifications are approximate and are subject to change without notice. Finished area and room dimensions will change depending on front elevation selection. E.A.O.E. Copyright 2025.



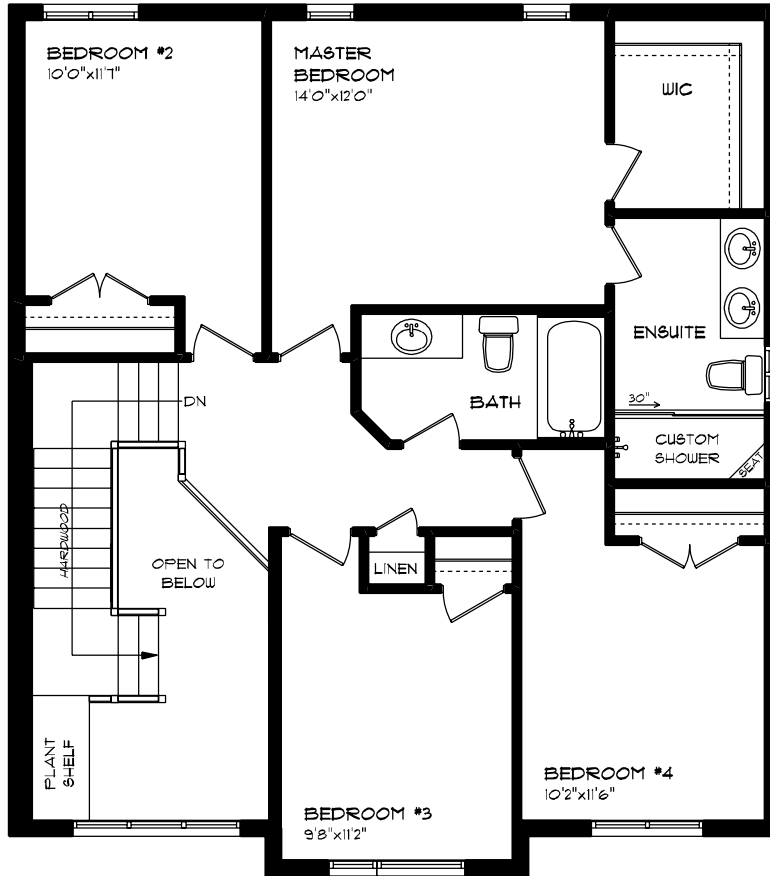
VERMONT

INVENTORY HOME
 ROLLING MEADOWS
 LOT 18 / HOUSE #9 FINCH ST.

MAIN FLOOR - APPROX. 978 SQ. FT.



This plan is the property of Hayhoe Homes and any reproduction of this plan, its concepts or ideas, is strictly prohibited. Plans and specifications are approximate and are subject to change without notice. Finished area and room dimensions will change depending on front elevation selection. E.A.O.E. Copyright 2025.



VERMONT

INVENTORY HOME
 ROLLING MEADOWS
 LOT 18 / HOUSE #9 FINCH ST.

SECOND FLOOR - APPROX. 945 SQ. FT.



This plan is the property of Hayhoe Homes and any reproduction of this plan, its concepts or ideas, is strictly prohibited. Plans and specifications are approximate and are subject to change without notice. Finished area and room dimensions will change depending on front elevation selection. E.A.O.E. Copyright 2025.