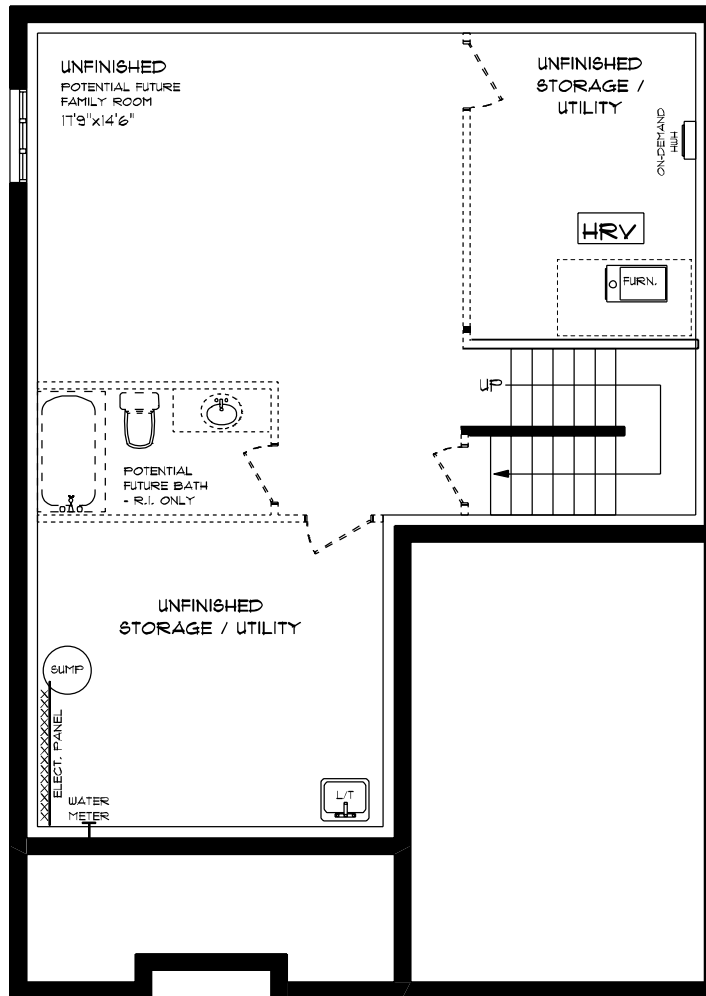




R I D G E M I L L

ESSENTIAL SPECS
LOT 19A (#10) THOMAS COURT
FRONT ELEVATION
9' MAIN FLOOR CEILING
APPROX. 1,921 SQ. FT.

This plan is the property of Hayhoe Homes and any reproduction of this plan, its concepts or ideas, is strictly prohibited. Plans and specifications are approximate and are subject to change without notice. Finished area and room dimensions will change depending on front elevation selection. E.A.O.E. 2024
CREATED NOV. 2024

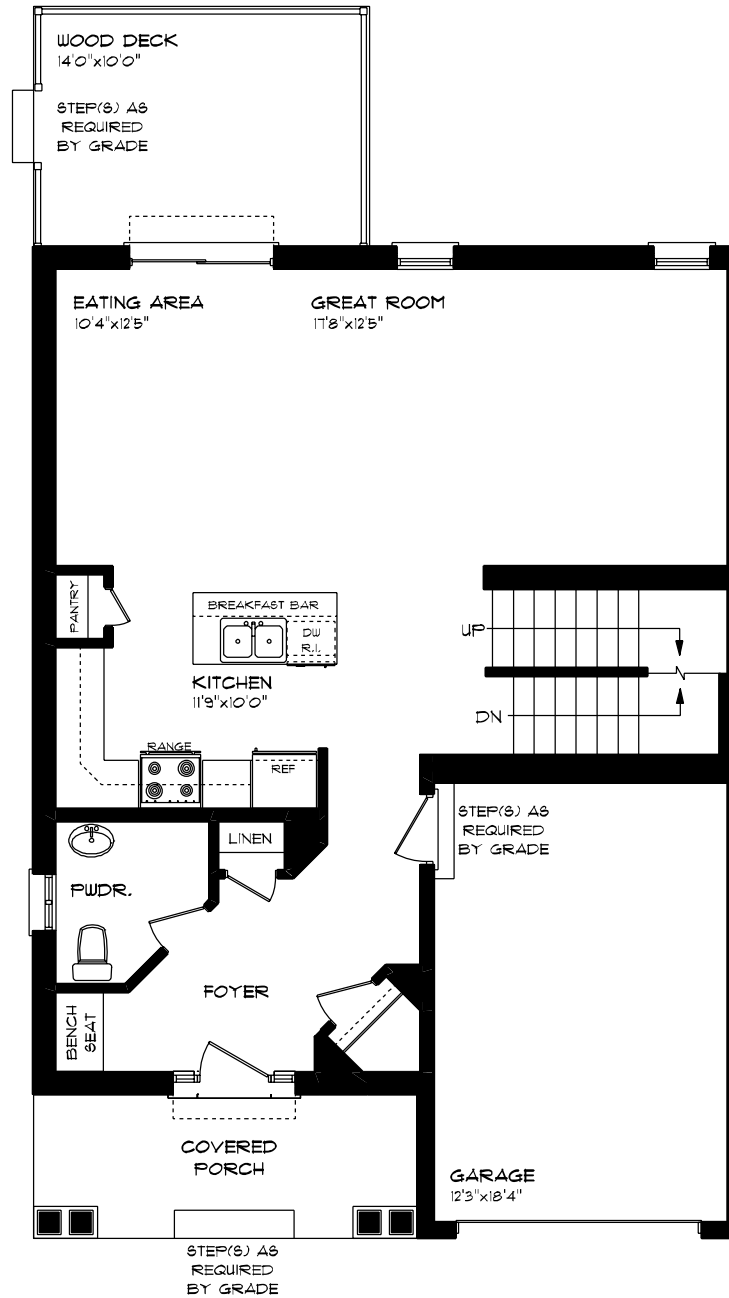


R I D G E M I L L

ESSENTIAL SPECS
 LOT 19A (#10) THOMAS COURT
 LOWER LEVEL PLAN
 0 SQ. FT.

This plan is the property of Hayhoe Homes and any reproduction of this plan, its concepts or ideas, is strictly prohibited. Plans and specifications are approximate and are subject to change without notice. Finished area and room dimensions will change depending on front elevation selection. E.40.E. 2024

CREATED NOV. 2024

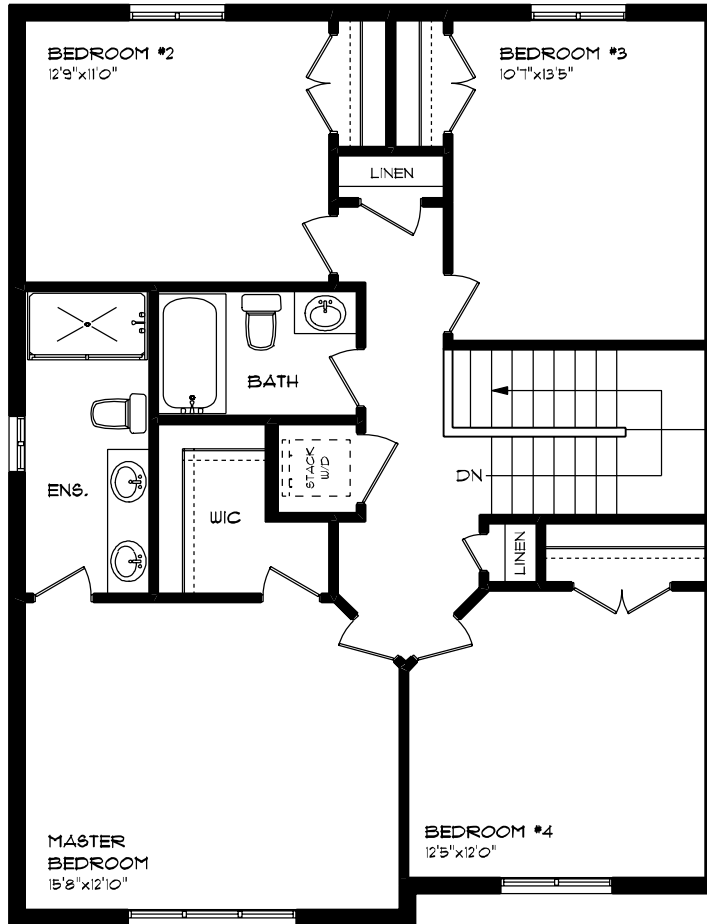


RIDGEMILL

ESSENTIAL SPECS
 LOT 19A (#10) THOMAS COURT
 MAIN FLOOR PLAN
 9' MAIN FLOOR CEILING
 APPROX. 873 SQ. FT.

This plan is the property of Hayhoe Homes and any reproduction of this plan, its concepts or ideas, is strictly prohibited. Plans and specifications are approximate and are subject to change without notice. Finished area and room dimensions will change depending on front elevation selection. E.40.E. 2024

CREATED NOV. 2024



RIDGEMILL

ESSENTIAL SPECS
 LOT 19A (#10) THOMAS COURT
 SECOND FLOOR PLAN

APPROX. 1,048 SQ. FT.

This plan is the property of Hayhoe Homes and any reproduction of this plan, its concepts or ideas, is strictly prohibited. Plans and specifications are approximate and are subject to change without notice. Finished area and room dimensions will change depending on front elevation selection. E.40.E. 2024

CREATED NOV. 2024