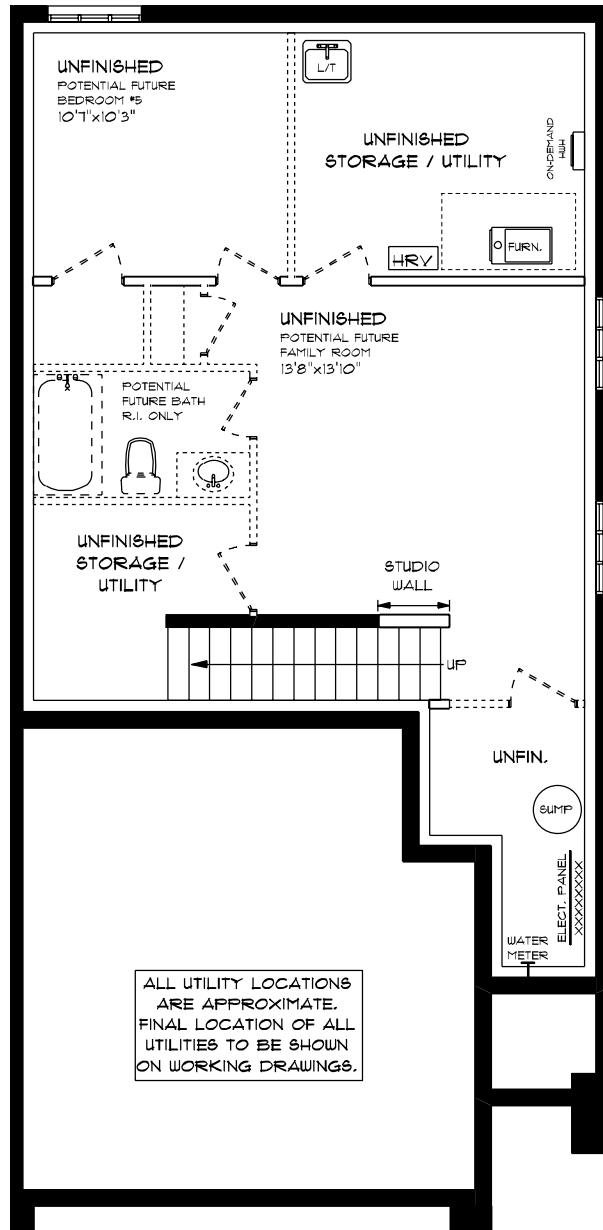




CLIFTON (ESSENTIAL SPECS)
 LOT 37D (#42) FINCH STREET
 FRONT ELEVATION
 9' MAIN FLOOR CEILING
 APPROX. 1,916 TOTAL SQ. FT.

This plan is the property of Haysom Homes and any reproduction of this plan, its concepts or ideas, is strictly prohibited. Plans and specifications are approximate and are subject to change without notice. Finished area and room dimensions will change depending on front elevation section. E40.E, 2025
 CREATED JUN. 2025

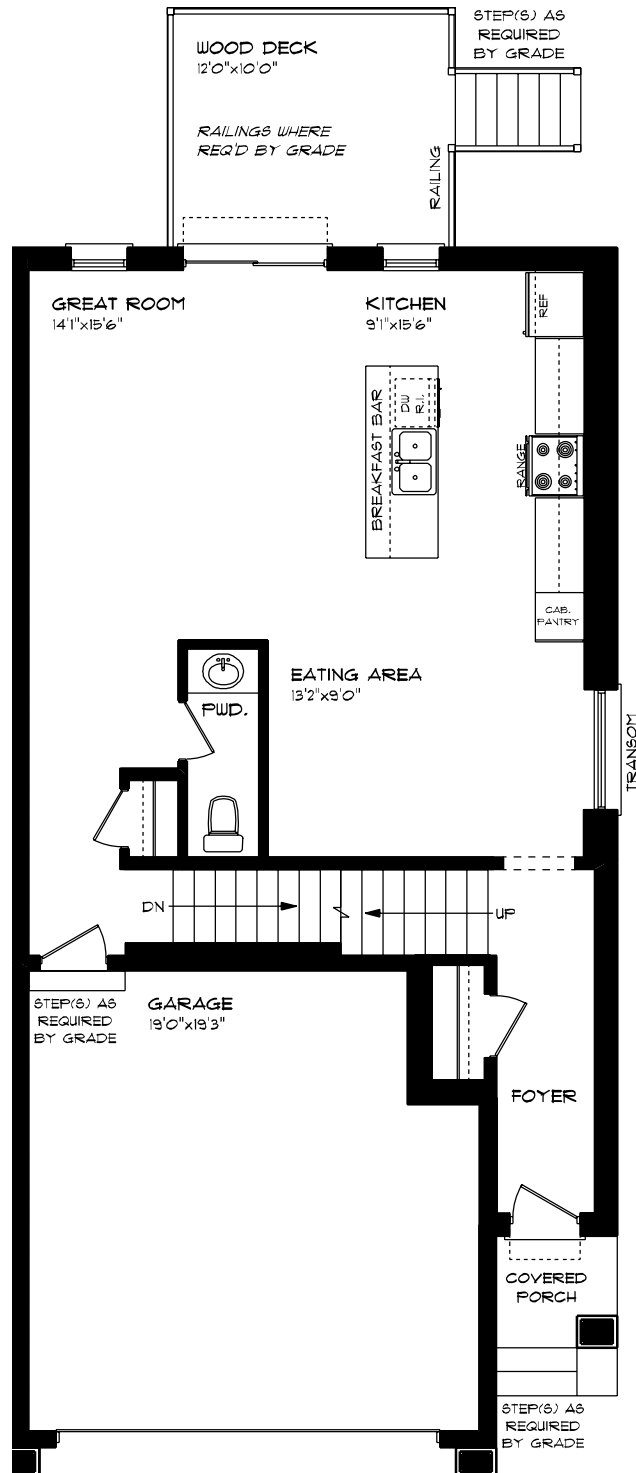


CLIFTON (ESSENTIAL SPECS)
LOT 37D (#42) FINCH STREET
LOWER LEVEL

UNFINISHED

This plan is the property of H&H Home and any reproduction of this plan, its concepts or ideas, is strictly prohibited. Plans and specifications are approximate and are subject to change without notice. Finished area and room dimensions will change depending on front elevation section. E.A.O.E. 2025

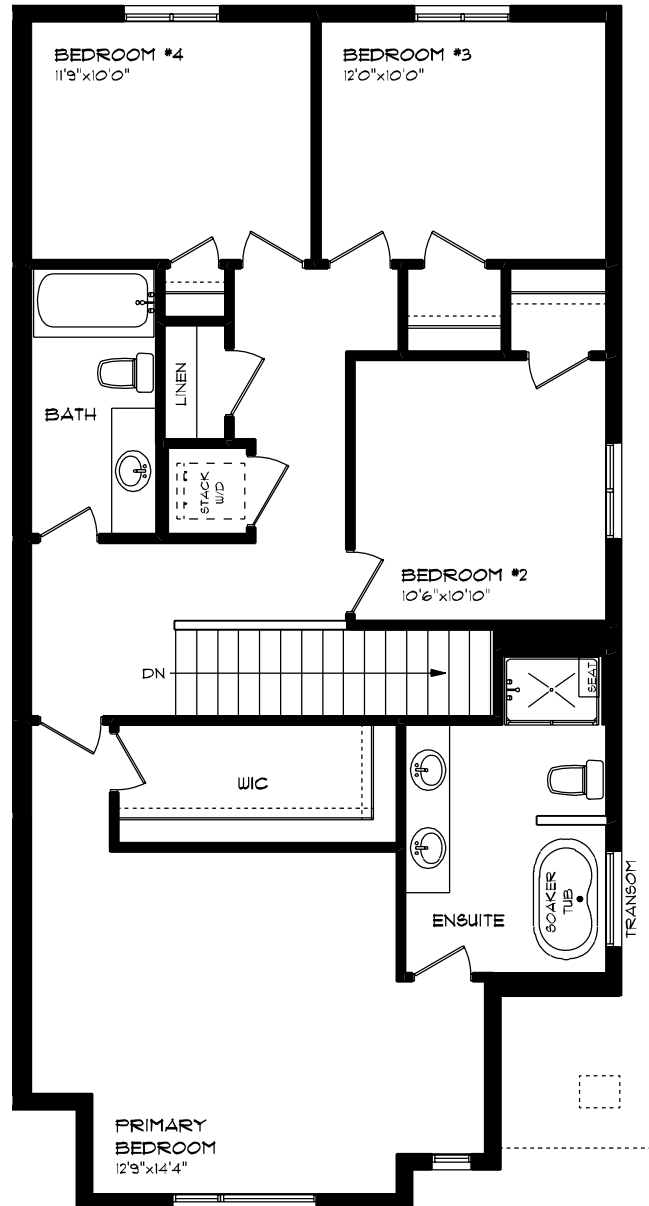
CREATED JUN. 2025



CLIFTON (ESSENTIAL SPECS)
LOT 37D (#42) FINCH STREET
MAIN FLOOR PLAN
9' MAIN FLOOR CEILING
APPROX. 831 SQ. FT.

This plan is the property of Hayhoe Homes and any reproduction of this plan, its concepts or ideas, is strictly prohibited. Plans and specifications are approximate and are subject to change without notice. Finished areas and room dimensions will change depending on front elevation selection. E.A.D.E., 2025

CREATED JUN. 2025



**CLIFTON (ESSENTIAL SPECS)
LOT 3TD (#42) FINCH STREET
SECOND FLOOR PLAN
APPROX. 1,145 SQ. FT.**

This plan is the property of Hajos Homes and any reproduction of this plan, its concepts or ideas, is strictly prohibited. Plans and specifications are approximate and are subject to change without notice. Finished area and room dimensions will change depending on front elevation selection. E.A.C.E. 2025

CREATED JUN. 2025