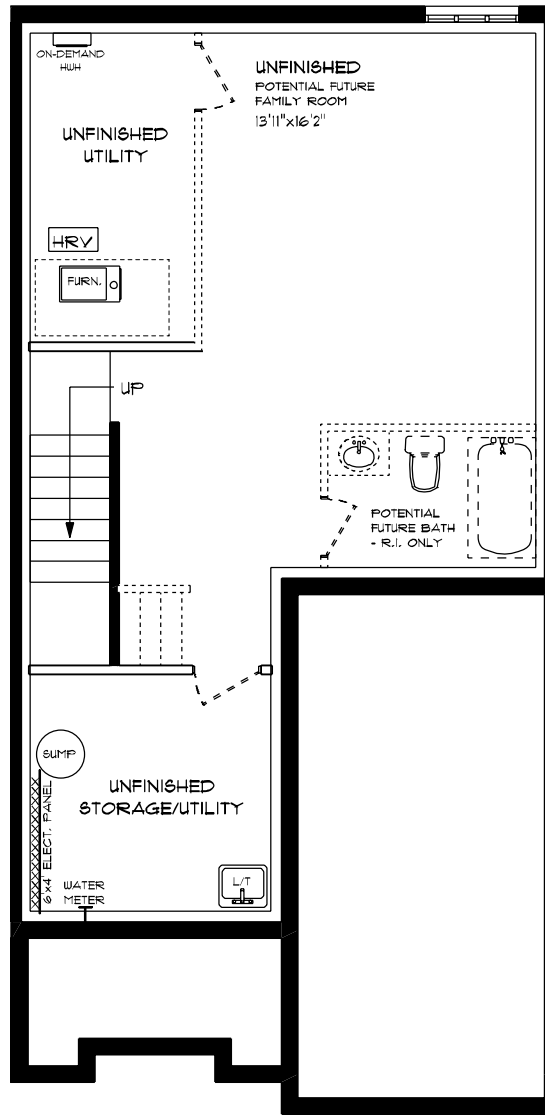




ATMORE (ESSENTIAL SPECS)
LOT T6C (#74) WILLOW DR.
FRONT ELEVATION
9' MAIN FLOOR CEILING
APPROX. 1,548 TOTAL SQ. FT.

This plan is the property of H&J Home Homes and any reproduction of this plan, its concepts or ideas, is strictly prohibited. Plans and specifications are approximate and are subject to change without notice. Finished area and room dimensions will change depending on front elevation selection. E.A.O.E. 2024

CREATED MAR. 2024

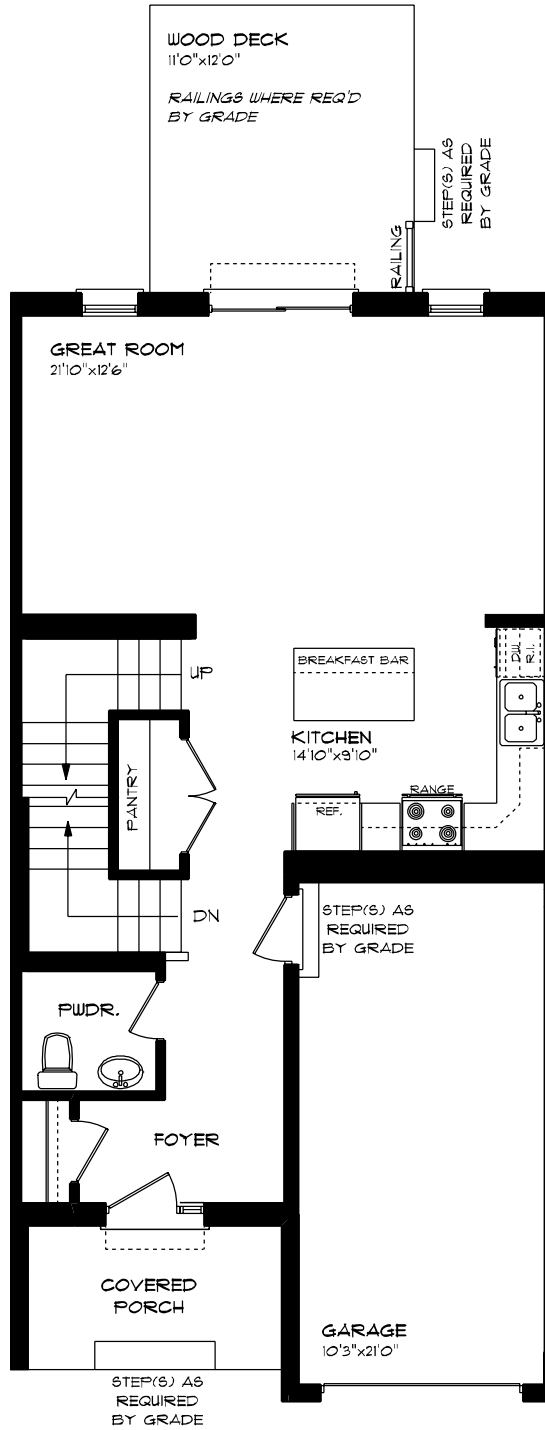


**ATMORE (ESSENTIAL SPECS)
 LOT 16C (*14) WILLOW DR.
 LOWER LEVEL PLAN**

UNFINISHED

This plan is the property of i-ghoe Homes and any reproduction of this plan, its concepts or ideas, is strictly prohibited. Plans and specifications are approximate and are subject to change without notice. Finished area and room dimensions will change depending on final elevation selection.

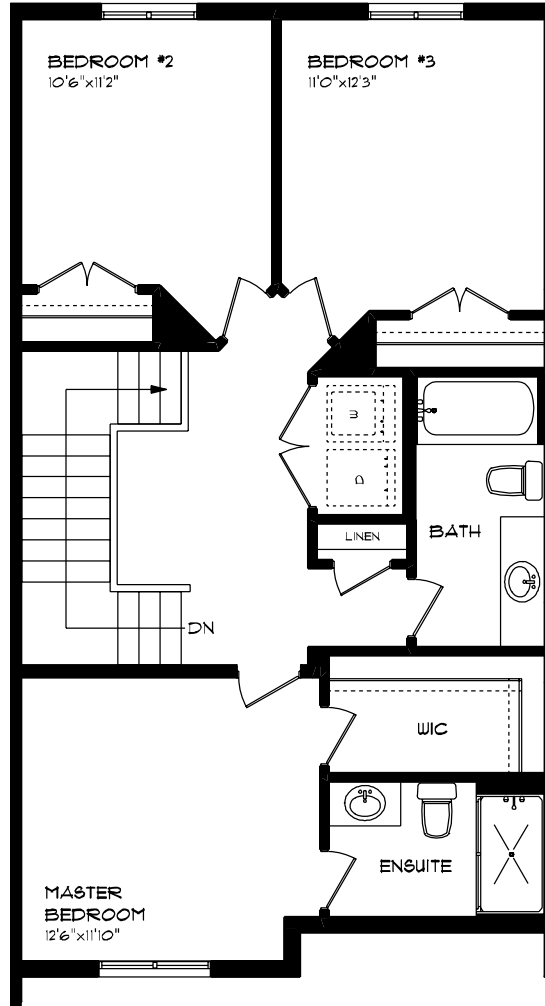
CREATED MAR. 2024



ATMORE (ESSENTIAL SPECS)
LOT 16C (#14) WILLOW DR.
MAIN FLOOR PLAN
9' MAIN FLOOR CEILING
APPROX. 125 SQ. FT.

This plan is the property of Inghos Homes and any reproduction of this plan, its concepts or ideas, is strictly prohibited. Plans and specifications are approximate and are subject to change without notice. Finished area and room dimensions will change depending on final elevation selection. E.A.O.E. 2024

CREATED MAR. 2024



**ATMORE (ESSENTIAL SPECS)
 LOT 16C (#14) WILLOW DR.
 SECOND FLOOR PLAN**

APPROX. 823 SQ. FT.

This plan is the property of H&H Homes and any reproduction of this plan, its concepts or ideas, is strictly prohibited. Plans and specifications are approximate and are subject to change without notice. Finished area and room dimensions will change depending on front elevation selection.

CREATED: MAR, 2024