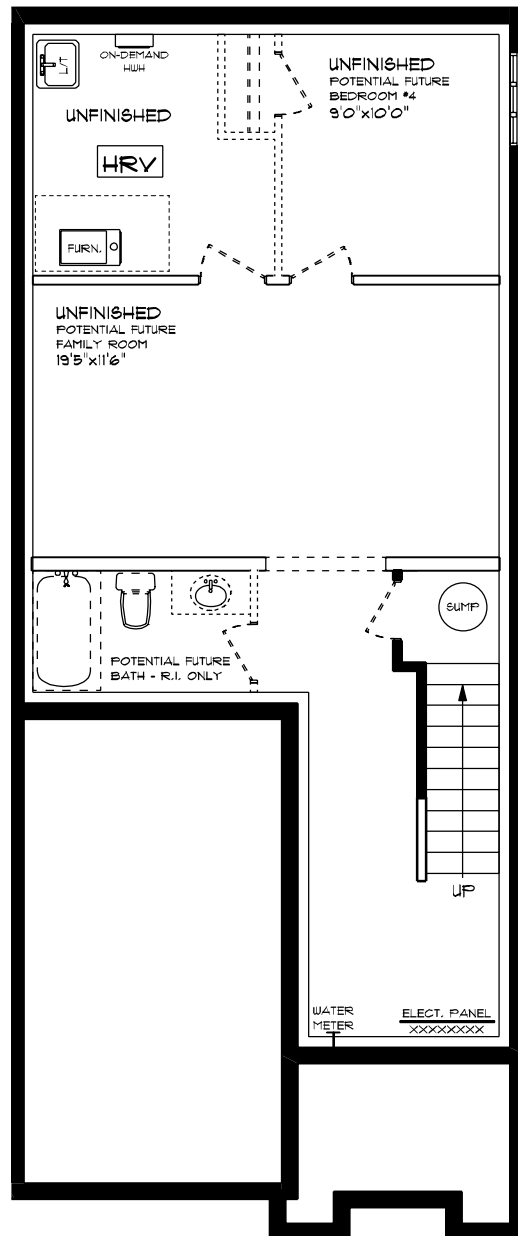




SHELTON (ESSENTIAL SPECS)  
 LOT 49F (#5) HEMLOCK CRESCENT  
 FRONT ELEVATION  
 9' MAIN FLOOR CEILING  
 APPROX. 1,645 SQ. FT.

This plan is the property of i-ghouse Homes and any reproduction of this plan, its concepts or ideas, is strictly prohibited. Plans and specifications are approximate and are subject to change without notice. Finished area and room dimensions will change depending on front elevation selection. E.A.O.B. 2024

CREATED MAR. 2024

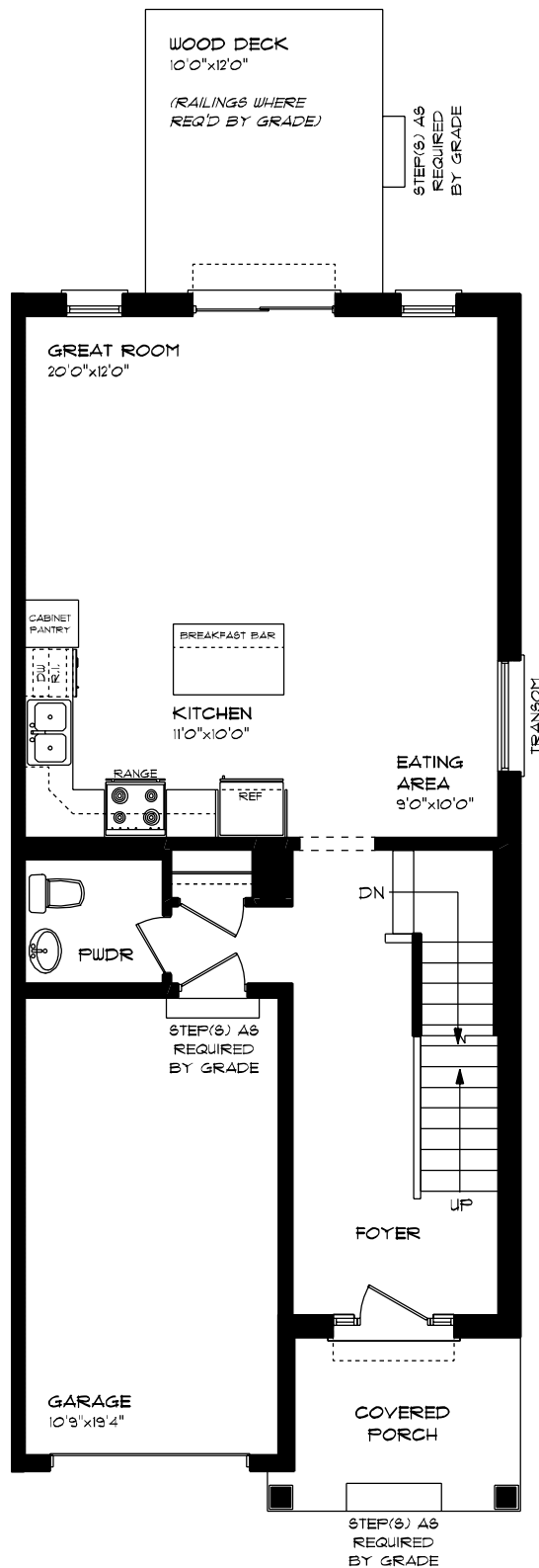


SHELTON (ESSENTIAL SPECS)  
LOT 49F (#5) HEMLOCK CRESCENT  
LOWER LEVEL PLAN

UNFINISHED

This plan is the property of Haysco Homes and any reproduction of this plan, its concepts or ideas, is strictly prohibited. Plans and specifications are approximate and are subject to change without notice. Finished area and room dimensions will change depending on front elevation selection. E.A.O.E. 2024

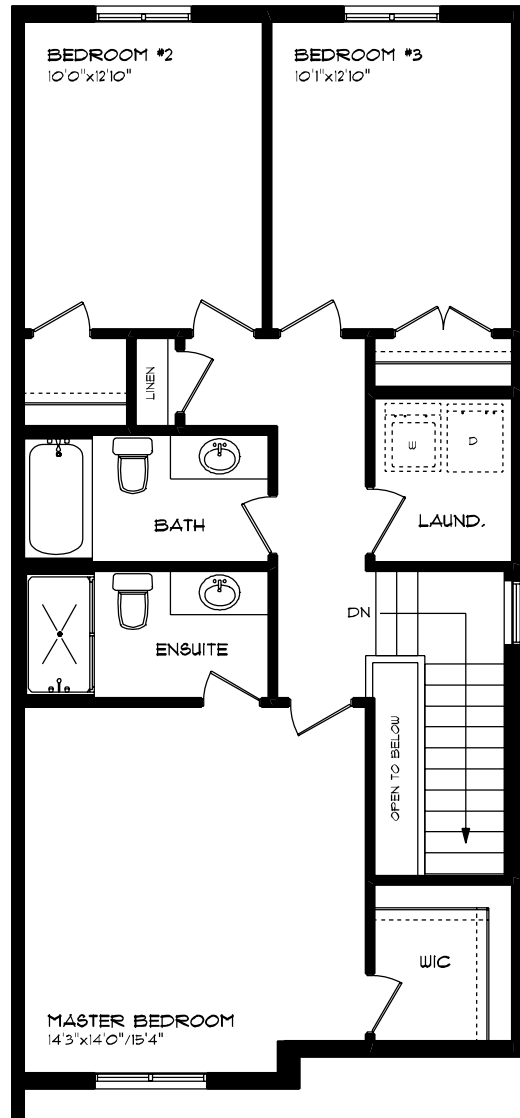
CREATED MAR, 2024



SHELTON (ESSENTIAL SPECS)  
 LOT 49F (\*5) HEMLOCK CRESCENT  
 MAIN FLOOR PLAN  
 9' MAIN FLOOR CEILING  
 APPROX. 178 SQ. FT.

This plan is the property of Hagler Homes and any reproduction of this plan, its concepts or ideas, is strictly prohibited. Plans and specifications are approximate and are subject to change without notice. Finished area and room dimensions will change depending on front elevation selection. E.A.E. 2024

CREATED MAR. 2024



**SHELTON (ESSENTIAL SPECS)  
LOT 49F (#5) HEMLOCK CRESCENT  
SECOND FLOOR PLAN**

**APPROX. 861 SQ. FT.**

This plan is the property of Mayhew Homes and any reproduction of this plan, its concepts or ideas, is strictly prohibited. \*Plans and specifications are approximate and are subject to change without notice. Finished areas and room dimensions will change depending on front elevation selection. E40.E. 2024

CREATED MAR. 2024